

HARTMANN & FORBES

NATURAL WALLCOVERING





NATURAL WALLCOVERING

WE SEE WALLS AS WINDOWS, TOO.

The presence of light and shade on a wall should always enhance your natural surroundings. Our collection of authentic grasscloth surface materials is created from rapidly-renewable fibers such as abaca, sisal, ramie and jute. Each textile is woven and finished by hand before being carefully backed and trimmed.

Here you'll find sanctuary, and inspiration wall-to-wall. From the warm, herbal tones of wine country to traditional Southern geometry, each design reflects a distinctly American personality.

An all-embracing way to feel even more at home.

GRASSCLOTH
PAPER WEAVE
SPECIALTY

BAJA

Resembling the majestic sandy coastlines in the summertime, the Baja Series radiates with a warm and inviting pale, sandy-patina unique to natural fibers such as mother of pearl, raffia and waterlily.



WL424-06 Coral Sands



WL424-03 White Sands



WL424-12 Desert Sands



WL424-12 Baja – Desert Sands, Wallcovering



WL424-03 Baja – White Sands, Wallcovering
EW150-12 Sahara – Plateau, Flat Style Roman



WL424-06 Baja – Coral Sands, Wallcovering



WL414-03 Seaboard – Cape, Wallcovering



WL414-36 Seaboard – Pier, Wallcovering



WL414-12 Seaboard – Landing, Wallcovering
LE2121 Mesa – Adobe, Traditional Style Roman

SEABOARD

Inspired by that fleeting moment when the sea mist-covered boardwalk mirrors the sunset, Seaboard reflects this elegantly subtle shimmer in unique designs using fibers of abaca and hand-stripped water lilies.



WL414-03 Cape



WL414-12 Landing



WL414-36 Pier



RIVERFRONT

Resembling reflective waters of a river winding through a city, the Riverfront series is highlighted by golden metallic threads interwoven within soft white and silver abaca.



WL415-03 Sail



WL415-36 Mooring

HARBOR

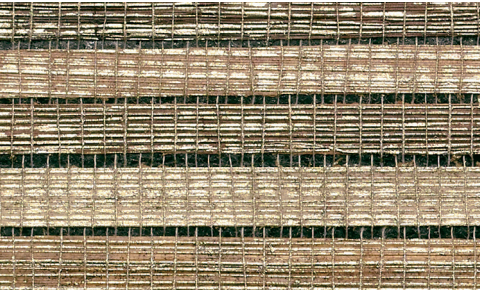
Sailboat-dotted inlets and ocean sunbeams inspired this eye-catching design. Hearty bac bac fiber is hand-stripped, handwoven, backed with colored paper, then washed with white or metallic pigments. This artisanal process creates a dimensional wallcovering of extraordinary character.



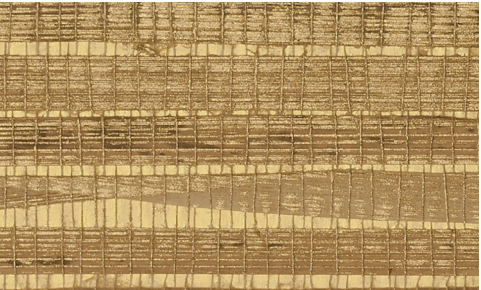
WL420-21 Nantucket



WL420-42 Rockport



WL420-45 San Juan



WL420-51 Catalina

ISLAND COAST

Elemental marine hues wash over this classic handwoven raffia weave with clear lacquer finish for subtle sheen. A contemporary classic that invites the outdoors in.



WL418-06 Shell



WL418-33 Sea Mist



WL418-15 Pebble



WL418-42 Tortoise



PENINSULA

Mineral browns and seafoam greens swirl and eddy in energetic motion over handwoven raffia with exposed micro knots. A pearlized glaze adds subtle glimmer to the weave and lends instant radiance to a space.



WL417-15 Sea Foam



WL417-33 Sea Break



WL417-45 Beach



WL417-60 Haze

Width: 36" (91.4cm) | Length: 8yds (7.3m)

Shown: WL418-33 Island Coast – Sea Mist, Wallcovering

Width: 36" (91.4cm) | Length: 8yds (7.3m)

Shown: WL417-60 Peninsula – Haze, Wallcovering



BEACHFRONT

At once relaxed and refined, Beachfront captures its namesake coastal feel. Artisan-loomed of textural raffia, its hand-painted fibers reveal variable brushstrokes for a laidback look. The colorized warp combined with whitewashed weft fibers in an open weave creates a dimensional, sun-dappled appearance.



WL425-18 Bandon



WL425-32 Seaside



WL425-36 Newport

Width: 43" (109cm) | Length: By-the-Yard

Shown: WL425-18 Beachfront – Bandon, Wallcovering
PE608-03 Unity – Peaceful Dove, Old Style Roman



SUNDANCE

The Utah Canyonland is a revered place devoted to the exploration of art, nature and cultural heritage. Constructed from tightly-woven paper fiber, the Sundance color palette is a striking combination of variegated earth tones with gold metallic overlay.



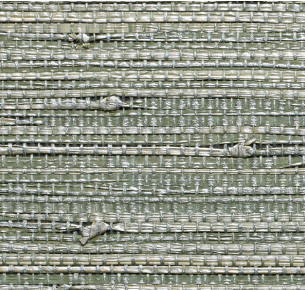
WL405 Jordanelle



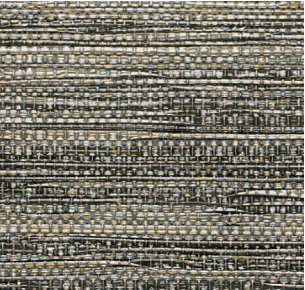
WL406 Rockport



WL407 Elkhorn



WL403-65 Wasatch Peak



WL408 Deer Valley

CASCADIA

An energetic metropolis is nestled between the volcanic peaks of the Cascade Range and the shimmering waters of the Puget Sound. Fresh and dynamic, these weaves embody the beauty of the Pacific Northwest.



WL310 Rainier



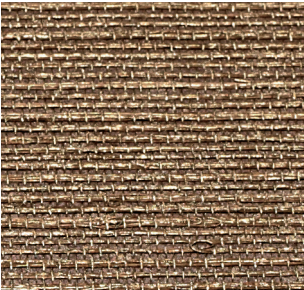
WL311 Queen Anne



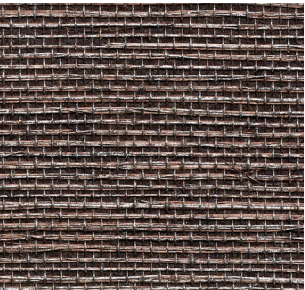
WL315 Pinehurst



WL313 Alki



WL314 Madrona



WL316-84 Sandpoint



HIGH DESERT

The High Desert series combines the stark beauty of the back country with the tenderness of life that thrives there. Striated, textured and dramatic, each weave exudes the warmth and character that draws people to the desert.



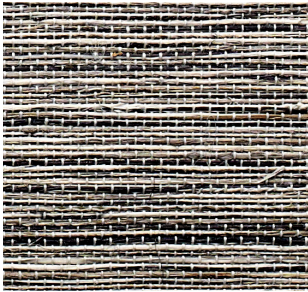
WL358 Sonoran



WL353 Ridgecrest



WL354 Sweetwater



WL352 Mineral Springs



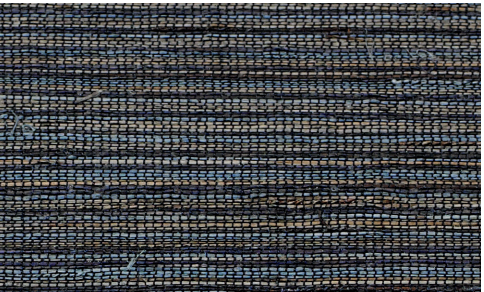
WL359 Mojave

SANTA LUCIA

Windswept seas and rugged shorelines are nearly palpable in the weaves of the Santa Lucia series. Each pattern gracefully infuses visions of cleansing mists, wild bluffs and coastal skies into any interior.



WL364 Cypress



WL366 Ventana





BIG SKY

The spectacular color display of Montana's open ranges is translated into this vigorous textural weave of jute and linen. Exposed knots and striated sagebrush colors contribute to a strong linear design.



WL419-21 Badlands



WL419-33 Bighorn

Width: 36" (91.4cm) | Length: 8yds (7.3m)

Shown: WL419-21 Big Sky – Badlands, Wallcovering
EW109-12 Cords – Burlap, Drapery



NORTH ESTATE

The hand-hewn weaves of the North Estate series provides walls with a cultivated and distinct patina reminiscent of fertile, sun-dappled valleys draped with vine-ripened fruit.



WL321 Blanc



WL323 Barrique



WL322 Chateau



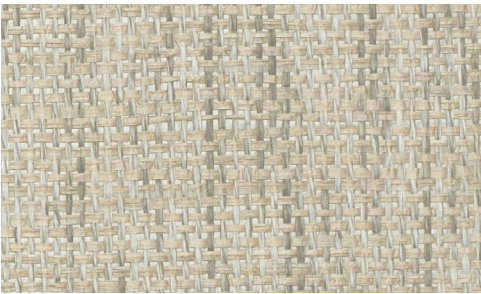
WL326 Domaine

Width: 36" (91.4cm) | Length: 8yds (7.3m)

888.582.8780 | HARTMANNFORBES.COM

ACRE

High on a Montana plateau at the edge of a pond, sun-bleached grasses sway in the wind. Horses gather to sip the clear water. These designs draw upon the serenity of the breeze, grass and water.



WL409-15 Chaff



WL409-12 Oat



WL409-21 Hay



TAHOE

Drawing inspiration from the golden tones that ignite the lip of Lake Tahoe's snow-lined shores, this series' blended weave of gold metallic threads into a woven paper backdrop encapsulates Tahoe's stunning late winter evenings.



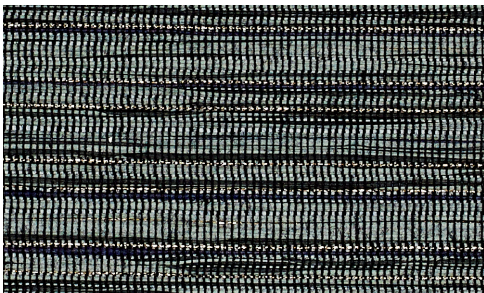
WL410-06 Snowdrift



WL410-21 Sundown



WL410-12 Icecap

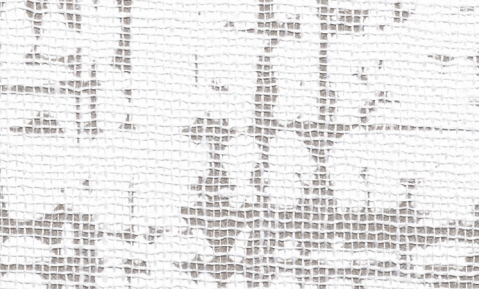


WL410-81 Starlight

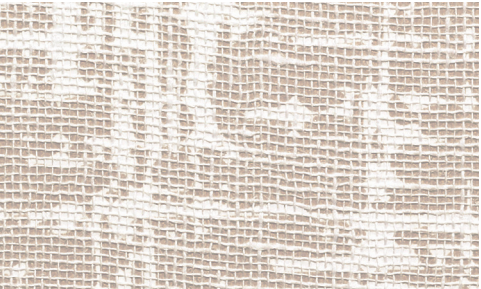


UPTOWN

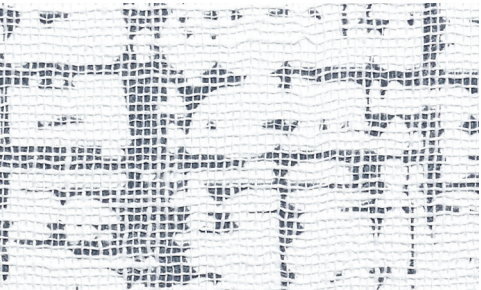
This refined wallcovering conveys the energy of urban construction. An abstract grid design is enlarged, rotary printed, then a thin layer of linen delicately hand applied to soften the effect. The result is a seamless backdrop that adds an element of the unexpected.



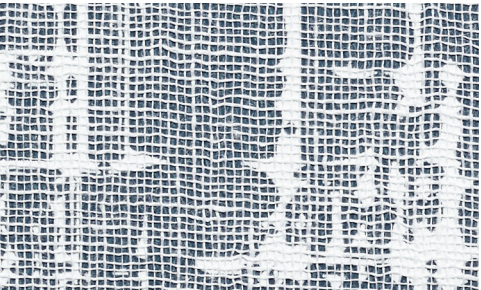
WL422-15 Boulevard



WL422-09 Walkway



WL422-60 Skyway



WL422-84 Rooftop

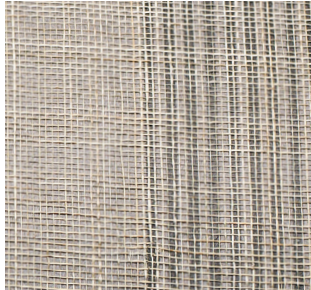
Width: 36" (91.4cm) | Length: 8yds (7.3m)

Shown: WL422-09 Uptown – Walkway, Wallcovering

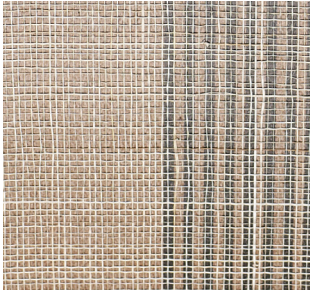


DISTRICT

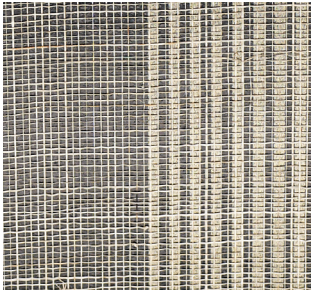
The unmistakable history of our nation's capital is reflected in the District series' warm colors and clean lines, which honor the past while celebrating today's contemporary design ideals.



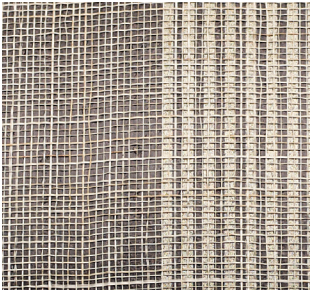
WL304 Georgetown



WL302 Dupont



WL303 Trinity



WL305 Bethesda

CATHEDRAL

Resembling the glossy bark of rain-soaked aspens in the Cathedral region of the Colorado mountains, this innovative design is created with hand-sliced cork skillfully placed on metallic backing paper, then printed with a design inspired by winter woodlands. This meticulous process results in a lasting impression.



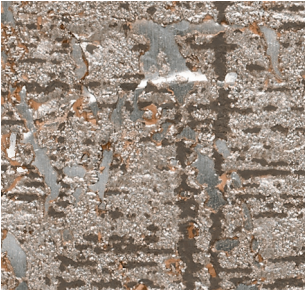
WL423-03 White Gold



WL423-09 Gilded



WL423-39 Bronze



WL423-18 Copper



ALPINE

Hand-stripped cork reminiscent of snowcapped summits, rich pine forests and glacial meadows brings home the seldom-experienced richness of a soft-to-the-touch wilderness.



WL375 Bristlecone



WL374 Aspen



WL376 Pine



WL378 Spruce

Width: 36" (91.4cm) | Length: 8yds (7.3m)

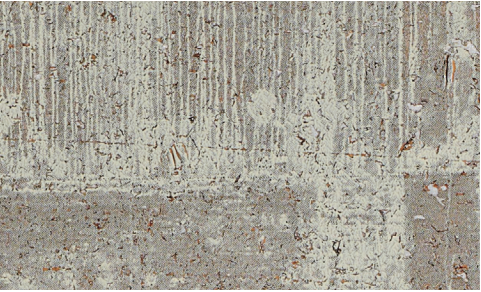
Shown: WL376 Alpine – Pine, Wallcovering

LAKE SHORE

The radiant finish of the Lake Shore series is reminiscent of skyscrapers rising up from Lake Michigan in downtown Chicago. Hand-peeled cork is backed with metallic paper and hand blocked with a metallic finish.



WL381 Lincoln Park



WL382 Bucktown



WL383 Edgewater



Width: 36" (91.4cm) | Length: 8yds (7.3m)



NORTHSANDS

The Northsands series features a neutral palette of vertical mica sand stripes against the subtle shimmer of a metallic backdrop. Northsands can be installed railroaded to create a horizontal stripe.



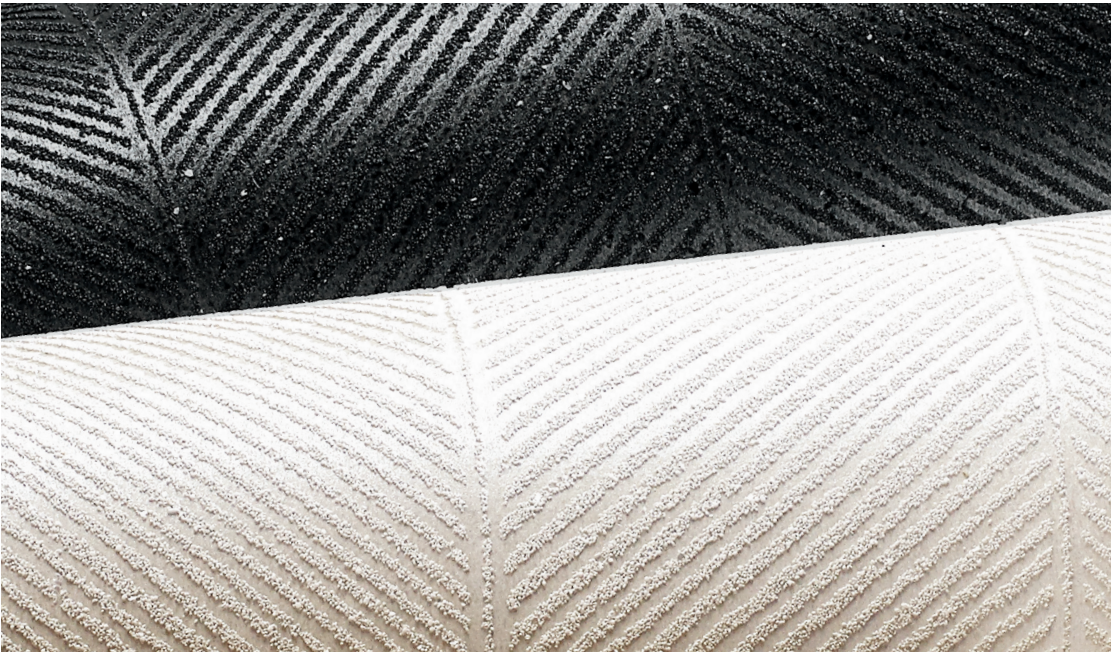
WL412-36 Sterling



WL412-03 Pearlescent

Width: 36" (91.4cm) | Length: 11yds (10m)

Shown: WL412-36 Northsands – Sterling, Wallcovering

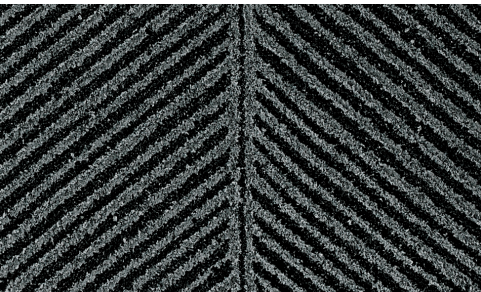


COASTLINE

Reflecting the dramatic rise and fall of the ocean tide, the Coastline series presents an oversized, herringbone-inspired mica sand pattern complemented by a dramatic metallic backdrop.



WL413-03 Clouded



WL413-84 Eclipse

Width: 36" (91.4cm) | Length: 11yds (10m)