

ff

Natural Woven Shade  
SUDARE STYLE



## SUDARE STYLE

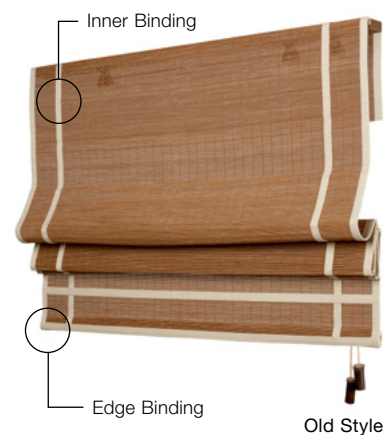
A fresh expression of a classical Japanese design, this shade style blends modern roman-fold operation with a handsewn decorative bamboo-fabric trim.

### DETAILS

- Crafted to chosen style specifications.  
Old Style, Traditional Style or Splitview Style
- ½" bamboo fabric binding is sewn to the shade edges, bottom hem and the inner-body 3½" from sides and bottom
- Bottom hem dropped 4"L to showcase inner-body trim

### DESIGN CONSIDERATIONS

- For wider shades consider increasing the distance of the inner-body binding from the shade edge to maintain scale proportion. Available up to 9"
- COM trim available upon approval



### AVAILABLE WEAVES



CWMS80 Matsu



CWMS81 Hinoki



CWMS82 Tochi

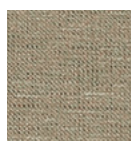
### BAMBOO BINDING



890 Ivory



830 Beechey



820 Ceylon



877 Tea



816 Java



866 Stone