



HARTMANN & FORBES

TAILORED

BASICS





TAILORED BASICS™ is designed for projects that require a faster, Tailored-to-Size approach.

Natural Grassweave and Papyrusweave textiles are pre-woven, then tailored into shades and hand finished in our Oregon workshop, guided by the same standards of care that define the Hartmann&Forbes house.

A range of textures and versatile, timeless neutrals creates interiors that feel calm, grounded, and enduring — available in 14 crafting days.



Natural fibers. Handcrafted. Ready in less than three weeks.



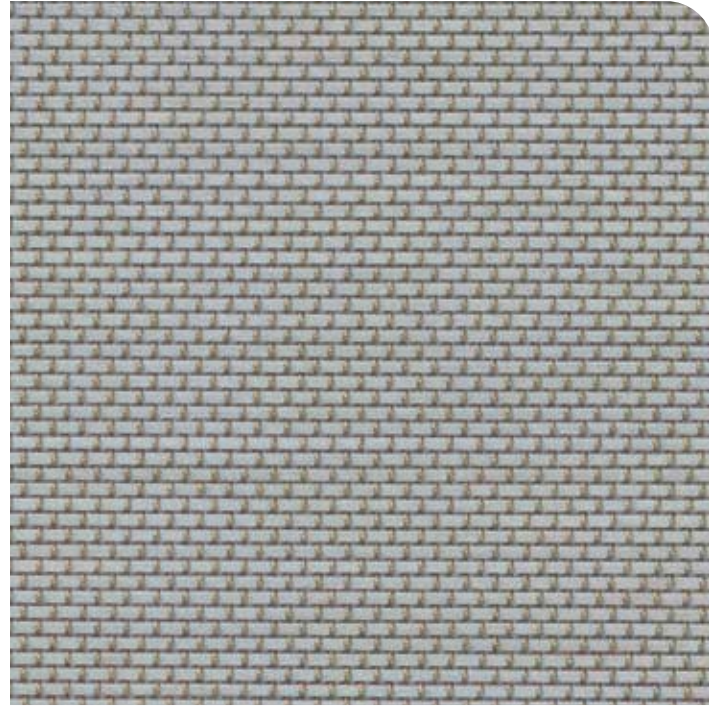
LINEN

Crisp, minimal and delightfully modern, this series has the natural approachability of linen fabric. Offered in a color palette that complements a wide range of interior color schemes.



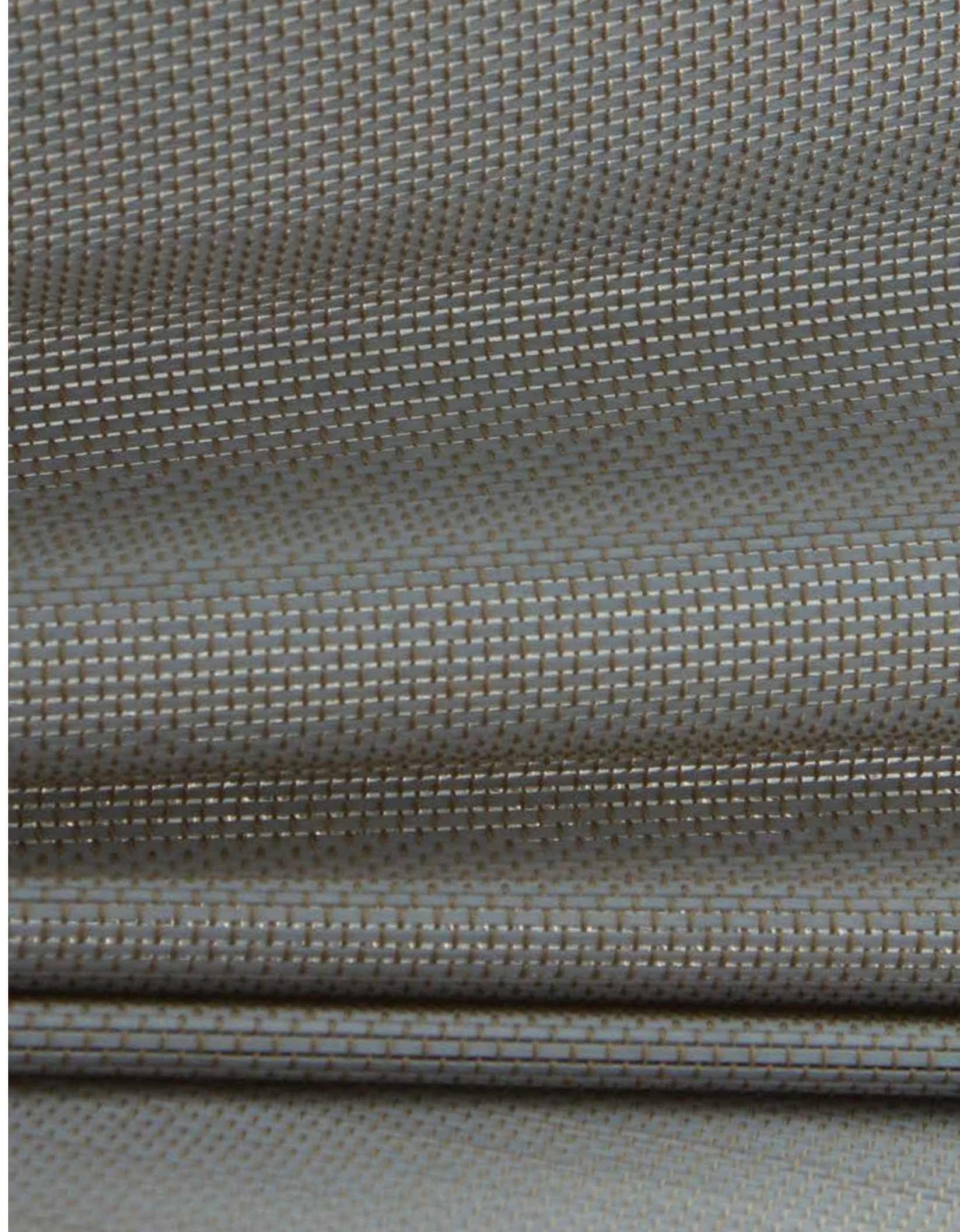
NO91w Linen – Winter Linen





NO91m Linen - Morning Linen

NO91d Linen - Dusk Linen





ESSENTIA

Woven jute fibers distilled to their essential beauty, this lightweight textile is available in a range of delicately heathered earth tones.



KW116 Essentia – Ame



KW112 Essentia - Kumo



KW110 Essentia - Asa



KW118 Essentia - Ishi





KW95 Blossom – Lotus Blossom



KW92 Blossom – Pacific Basin

BLOSSOM

A micro-fine jute textile offered
in two neutral colorways to
complement an array of
interior styles.

BASIN

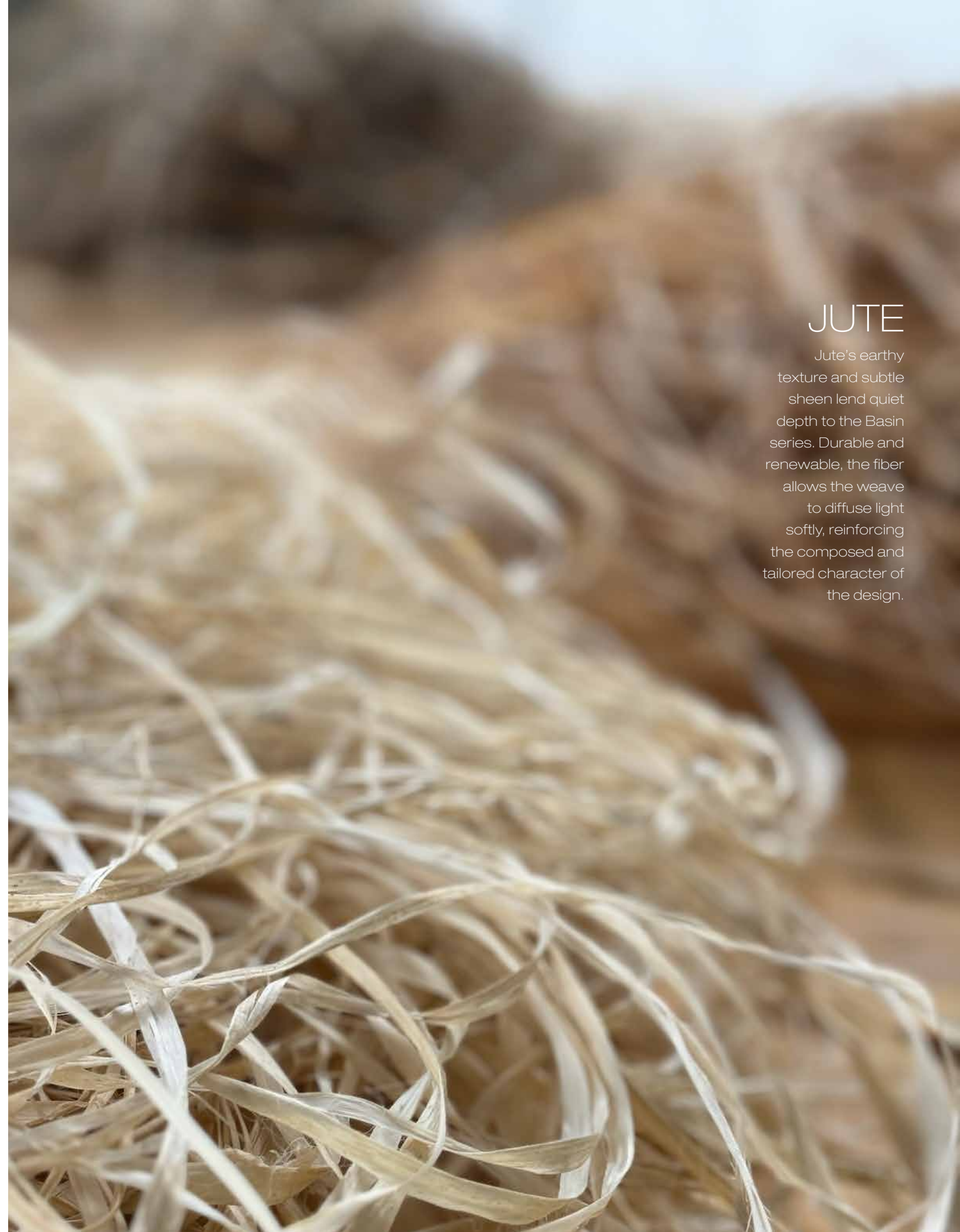
Elegant and finely tailored, this weave offers quiet serenity and soothing tones of sandstone, dappled grey and cocoa brown.



NO93 Basin – Yangtze Basin

JUTE

Jute's earthy texture and subtle sheen lend quiet depth to the Basin series. Durable and renewable, the fiber allows the weave to diffuse light softly, reinforcing the composed and tailored character of the design.





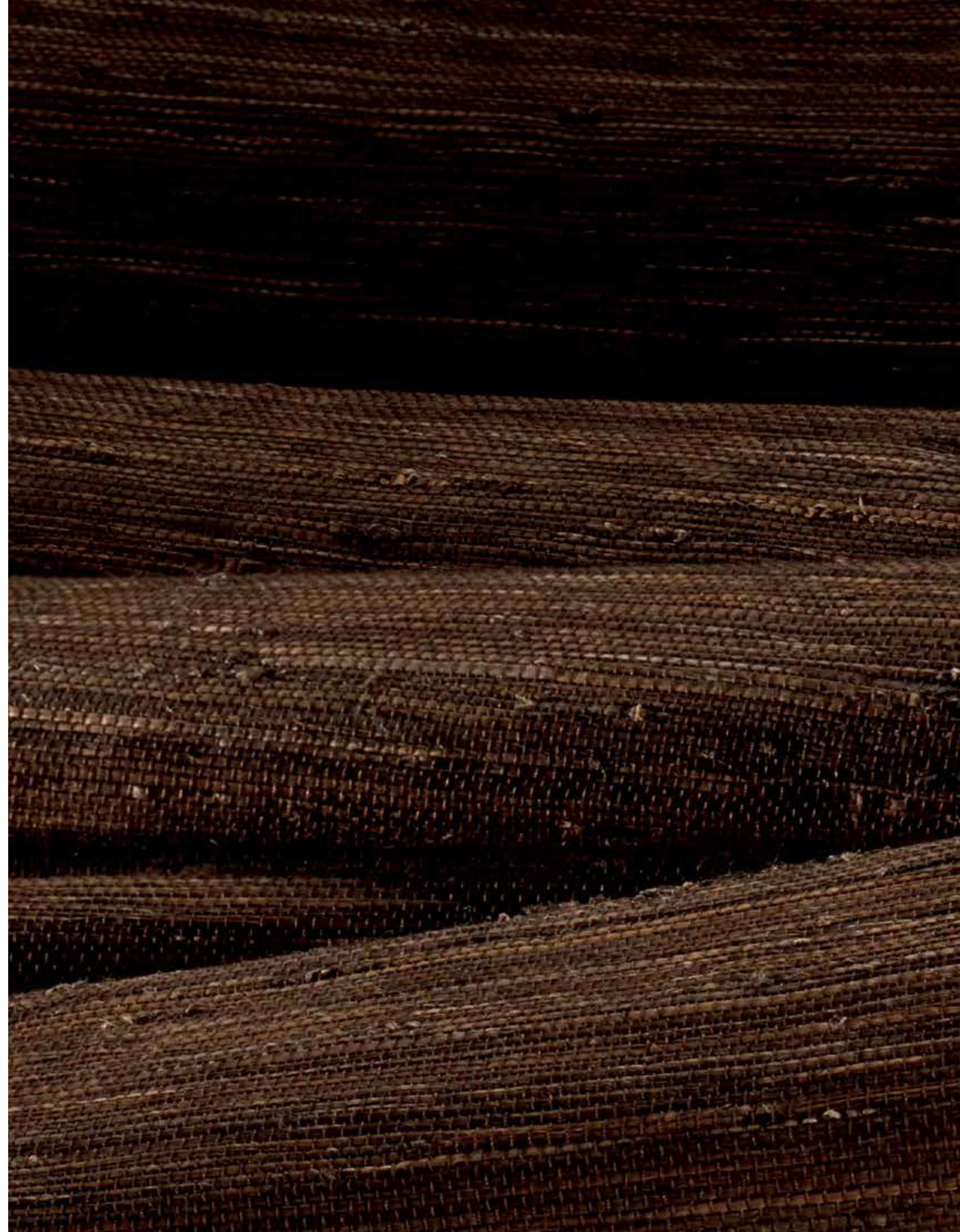
NO92 Basin - Mu Basin



NO95 Basin - Saru Basin



NO90 Basin – Kanto Basin





PRAIRIE

A prairie landscape of light and dark shading is translated into a jute weave interspersed with wild river reeds.



NO13n Prairie – Natural Prairie

RIVER REED

With its hollow structure and natural rigidity, river reed lends strength and linear clarity to the Prairie series. Once dried, the material adds texture and dimension to the weave, enhancing contrast and reflecting the open landscapes that inspire the design.



NO13s Prairie – Shadow Prairie



NO31r Taki – Taki Rustic



NO31 Taki – Taki Caramel

TAKI

Sustainably cultivated premium bamboo strips are hand laid and woven in a minimalistic pattern offering privacy with style.

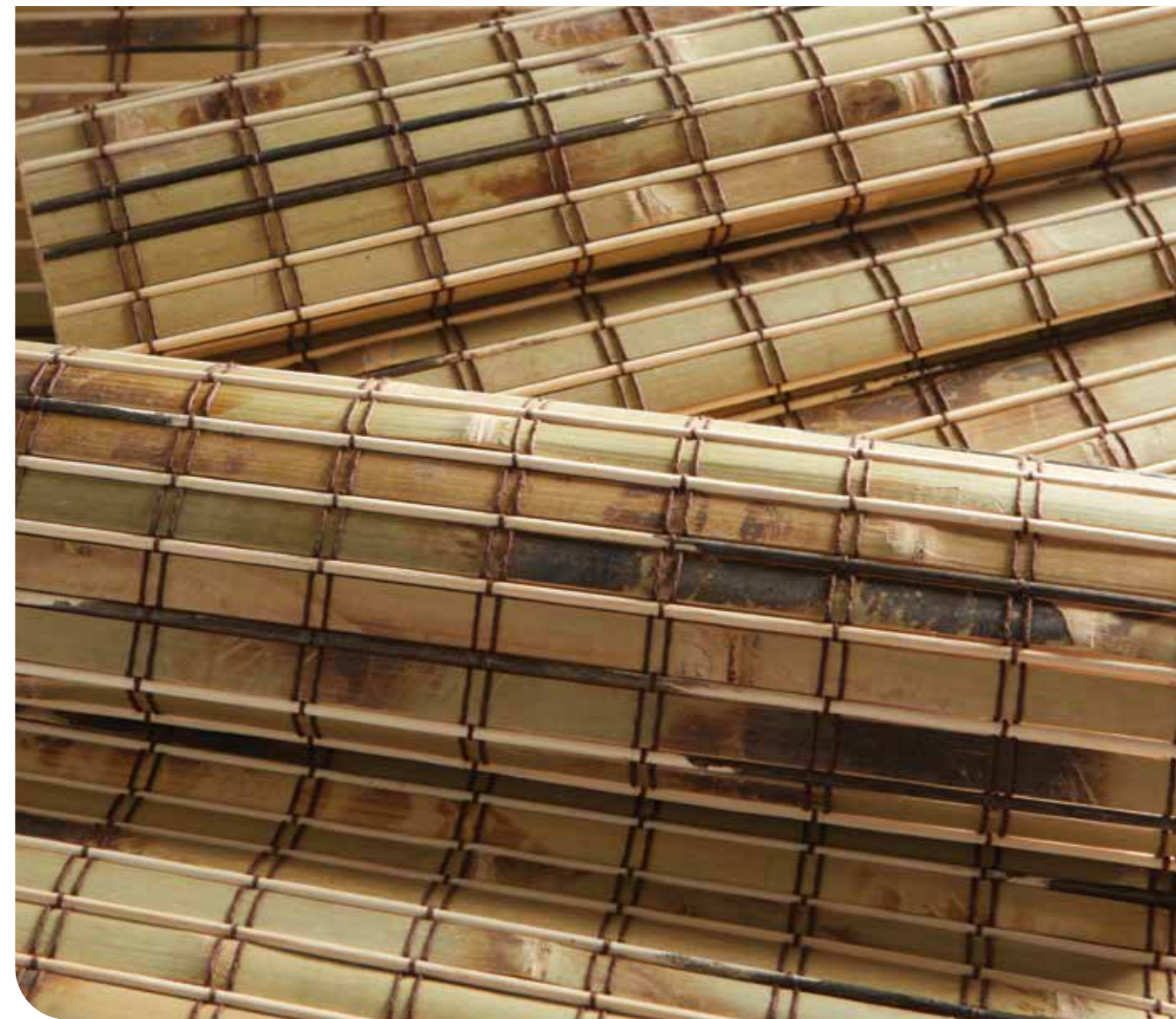


BAMBOO REED

Bamboo reed is valued for its strength, clarity, and architectural presence. The material's natural rigidity allows for clean lines and dimensional structure, giving the Bamboo series its distinctive graphic character while maintaining an organic feel.

BAMBOO

A unique and differentiated bamboo design that displays creative panache with a combination of flat and rounded fibers woven with a double warp pattern.



NO25r Bamboo – Bamboo Rustic w/Reed

WOOLEN MILL

The value of woven wool blankets dates back to the earliest expeditions across the American West. Inspired by this legacy, the Woolen Mill series offers a superior balance of rustic textures and natural colors.



PW157-09 Woolen Mill – Buff





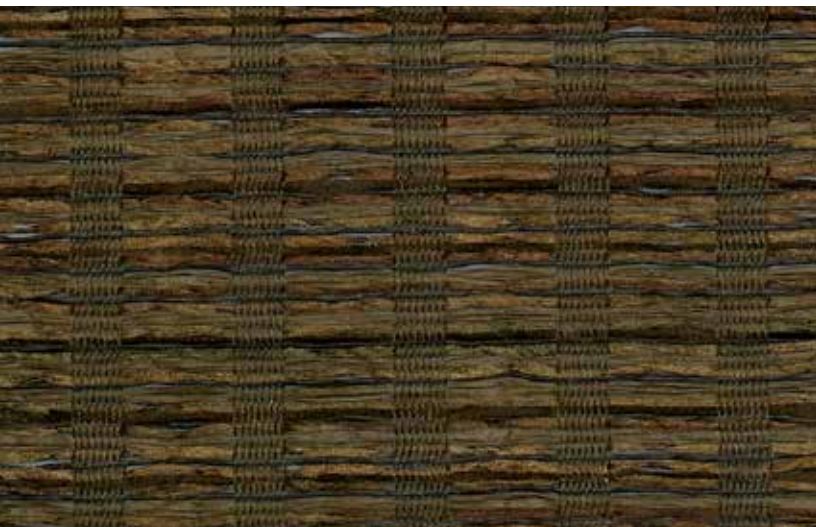
PW157-33 Woolen Mill – Sky



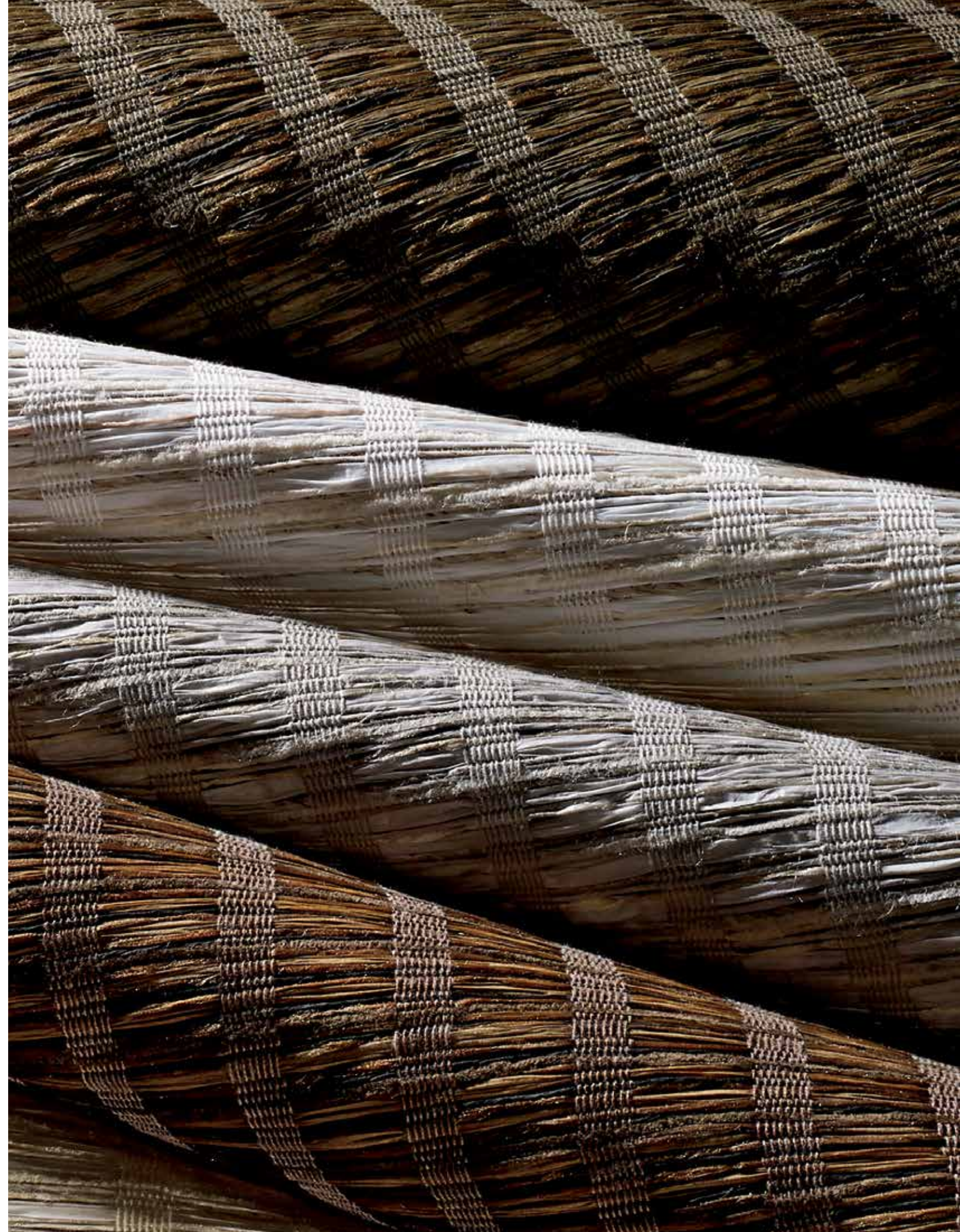
PW157-06 Woolen Mill – Ecrú



PW157-36 Woolen Mill – Heathered



PW157-66 Woolen Mill – Bruine



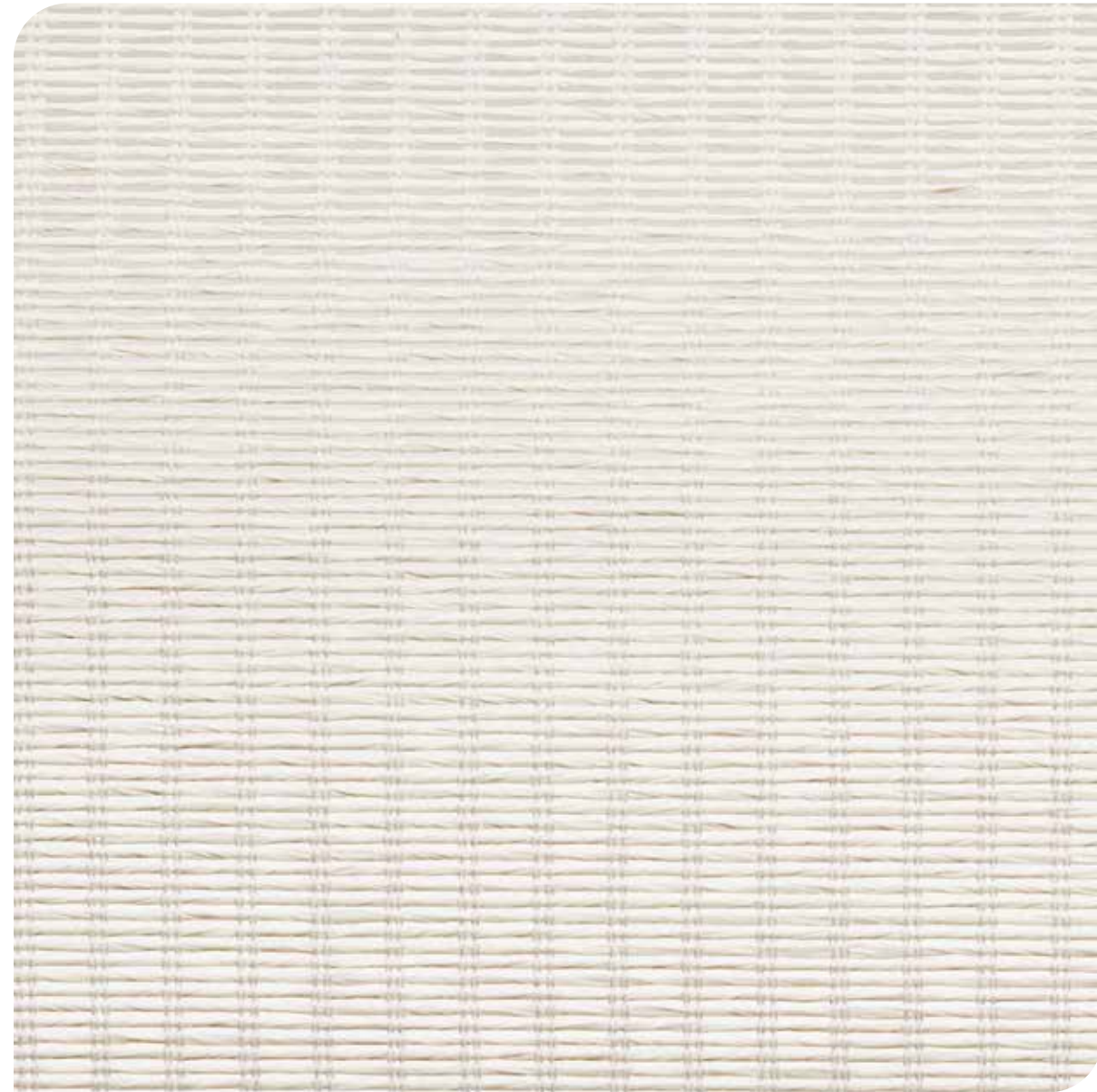


ZEN

Zen philosophy suggests uncluttered simplicity will stimulate tranquility. The Zen series adorns this philosophy with its refinement.



PW52 Zen - Stepping Stone



PW50 Zen – Snow Lantern



WOOD PULP

Derived from processed wood fibers, this material is formed by pulping and refining cellulose, then crafted into thin, durable strands or sheets. Often twisted or spun before weaving, pulp-based fibers offer lightweight strength, a matte finish, and a refined, organic feel.



PW156 Zen – Stone Temple



PW153 Zen – Rake Sand



PW154 Zen – Rock Garden



ARMENIA

Inspired by the cultural transformation of the Persian empire, the Armenia series plays with the drama of light and dark pulp fibers to influence the mood of a room.



PW101c Armenia – Cattail





PW101-12 Armenia - Medlar

PW101-84 Armenia - Elderberry





PW158-66 Basketry – Cocoa



PW158-03 Basketry – Blanched



PW158-09 Basketry – Fawn

BASKETRY

Ranging from highly functional to artistic masterpieces, basket weaving is an art form that spans cultures around the world. The Basketry series draws on this functional expression with four wide-warp designs in a neutral palette.



PW158-36 Basketry – Dusty

SILK ROAD

When Chinese silk was first discovered, it became a treasured commodity that merchants would travel far and wide selling to wealthy rulers and nobility. The Silk Road series emulates these rich textures valued across the historic trade route.



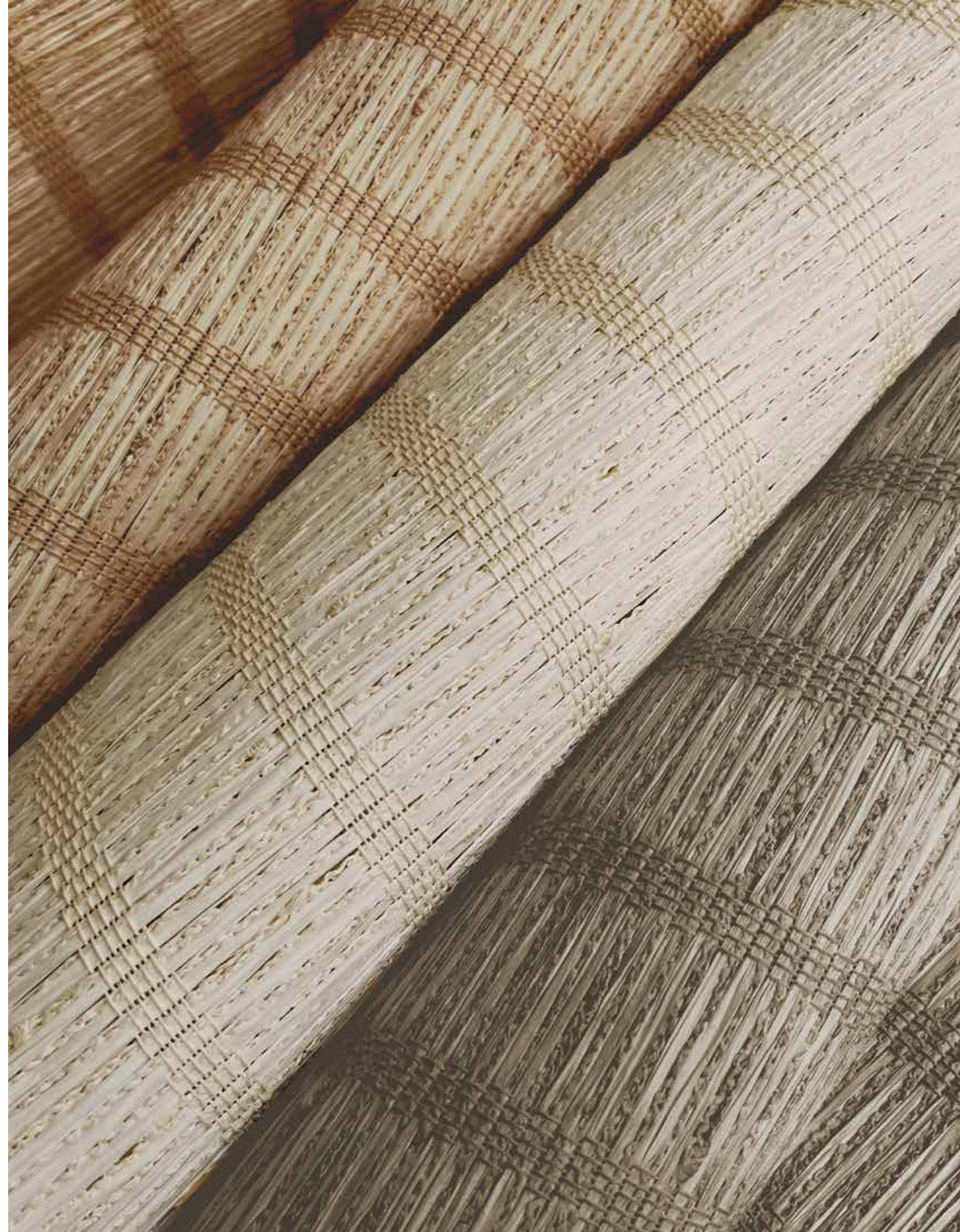
PW10w Silk Road – Pearl Silk



PW10p Silk Road – Porcelain Silk



PW10b Silk Road – Antique Silk





PHARAOH

As early as 4000 BC, ancient Egyptians would pound and weave papyrus plant fibers to create paper. The Pharaoh series pays tribute to the ancient craftsmen who created the pulp fiber to record the legacies of the wealthy.



PW94g Pharaoh - Ibis



PW94w Pharaoh – Cotton



SHOP TAILORED BASICS select to view online



PW94w Pharaoh - Cotton



PW50 Zen - Snow Lantern



PW10w Silk Road - Pearl Silk



PW158-03 Basketry - Blanched



PW10p Silk Road - Porcelain Silk



KW116 Essentia - Ame



KW92 Blossom - Pacific Basin



PW94g Pharaoh - Ibis



KW95 Blossom - Lotus Blossom



NO93 Basin - Yangtze Basin



PW157-06 Woolen Mill - Ecrú



NO91w Linen - Winter Linen



KW112 Essentia - Kumo



PW101-12 Armenia - Medlar



PW156 Zen - Stone Temple



PW158-36 Basketry - Dusty



PW153 Zen - Rake Sand



KW110 Essentia - Asa



PW157-09 Woolen Mill - Buff



PW158-09 Basketry - Fawn



PW157-33 Woolen Mill - Sky



NO91m Linen - Morning Linen



PW157-36 Woolen Mill - Heathered



PW101-84 Armenia - Elderberry



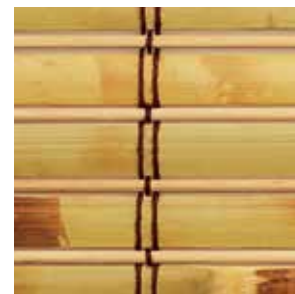
PW10b Silk Road - Antique Silk



NO13n Prairie - Natural Prairie



NO31r Taki - Taki Rustic



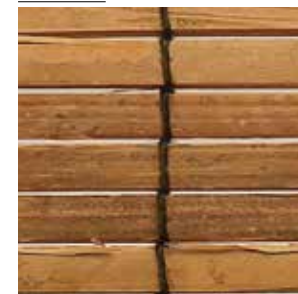
NO25r Bamboo - Bamboo Rustic w/Reed



KW118 Essentia - Ishi



NO13s Prairie - Shadow Prairie



NO31 Taki - Taki Caramel



NO90 Basin - Kanto Basin



NO92 Basin - Mu Basin



NO95 Basin - Saru Basin



PW52 Zen - Stepping Stone



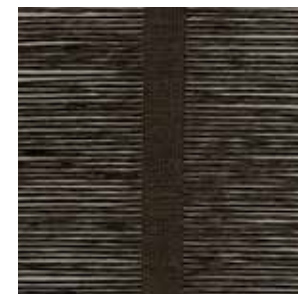
PW101c Armenia - Cattail



PW154 Zen - Rock Garden



NO91d Linen - Dusk Linen



PW158-66 Basketry - Cocoa



PW157-66 Woolen Mill - Bruine

BOSTON
NEW YORK
LONDON
PARIS
WASHINGTON DC
HOLLYWOOD, FL
ATLANTA
DETROIT
CLEVELAND
CHICAGO
ARLINGTON HEIGHTS
INDIANAPOLIS
MINNEAPOLIS
DENVER
ST. LOUIS
KANSAS CITY
DALLAS
HOUSTON
SCOTTSDALE
SEATTLE
SAN FRANCISCO
LOS ANGELES
LAGUNA NIGUEL
CALGARY, AB
VANCOUVER, BC
TORONTO, ON



+1 503 692 9313 | hartmannforbes.com