



# Have you considered your Privacy Levels?

## Troubleshooting Guide

Roman Shades being returned for privacy upgrades is the most common error when ordering shades and can easily be avoided by factoring privacy needs into the initial specifying process.

The majority of natural weaves are open or sheer, which is what makes them beautiful. However, an open weave doesn't offer privacy or room darkening when shades are used in bedrooms or other areas where light control or privacy is required.

**Follow these steps to assist in determining what is best for your project**

### 1. UNDERSTAND THE DIFFERENT WEAVE PRIVACY LEVELS

LEVEL	NAME	DESCRIPTION
1	SHEER	Almost no privacy – diffuses light and glare while preserving a view
2	TRANSLUCENT	Moderate privacy – most light passes through while softening the view
3	SEMI-OPAQUE	Significant privacy – little light passes through while obstructing the view
4	OPAQUE	Complete privacy – no light passes through and no view possible

### 2. IDENTIFY THE PRIVACY LEVEL OF YOUR SELECTED WEAVE

The privacy level helps to determine if the room requires additional privacy. Privacy levels can be found in the weave detail for each product on the website.

### 3. REVIEW PRIVACY AND SUN CONTROL UPGRADES (SEE ATTACHED)

- **Privacy Liner:** Available in Sheer, Translucent or Blackout, liner fabric is hand stitched to the back of a roman shade for added privacy and sun protection
- **Independent Dual Shade:** An independent rollershade mounted behind a natural roman shade provides flexible sunlight and privacy control. Rollershades are offered in a range of weaves and opacities giving you flexibility to control the environment.
- **Extra Density Weaving:** A feature of the Woven-to-Size Grassweave Collections, additional weft fibers are handwoven into the design providing added privacy and light blockage

### 4. CALCULATE UPGRADE

See Price List or contact Customer Relations



# Have you considered your Privacy Levels?

## Troubleshooting Guide



### ROMAN SHADES PRIVACY LINER

Liner fabric is hand-stitched to the back of a roman shade for added privacy. Available in neutral earth tones to preserve the appearance of the window when viewed from the exterior.

#### DETAILS

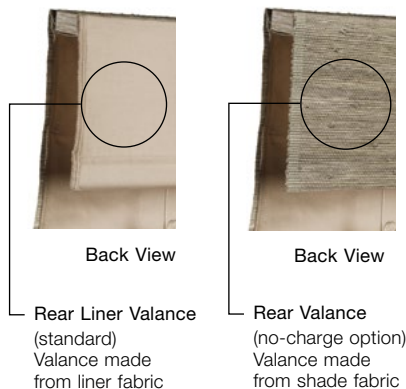
- Liner is approximately  $\frac{1}{8}$ " -  $\frac{1}{4}$ " from shade edge
- Serged and hand-stitched to back of shade at each ring, sides and bottom of shade (blackout not serged)
- Hand-stitched to back of valance
- If blackout liner is white on reverse side, color side will face the room
- Shades with blackout liner will have stainless steel rings

#### DC DESIGN CONSIDERATIONS

- If shade is wider than liner seamless width, liner is generally sewn in three vertical panels, or railroaded, unless otherwise specified
- Some light leakage may occur where rings are stitched to Blackout liner
- COM liner available as upgrade; must be submitted for pre-approval

#### HELPFUL HINT

- Avoid the most common specification error – specify liner with your initial order to avoid having shades sent back to be recrafted with liner





# Have you considered your Privacy Levels?

## Troubleshooting Guide

### Privacy Liner Fabric Colorways

---

**SHEER** – An elegant lightweight liner designed to complement the candling effects of natural textiles, while offering an additional veil of privacy.



Natural Woven Shade



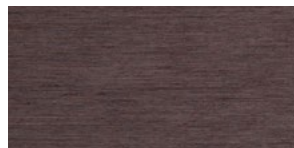
**SH01 Soft White**  
Max. seamless width: 108"  
Cotton



**SH02 Linen**  
Max. seamless width: 108"  
Cotton/Poly



**SH03 Khaki**  
Max. seamless width: 108"  
Cotton



**SH05 Umber**  
Max. seamless width: 108"  
Cotton/Poly

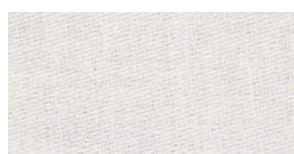


**SH07 Slate**  
Max. seamless width: 108"  
Cotton

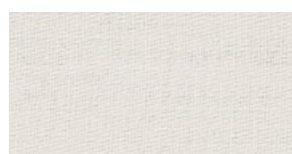
**TRANSLUCENT** – A midweight liner that offers more privacy and sunlight control than a sheer liner, while retaining a soft hand and elegant drape.



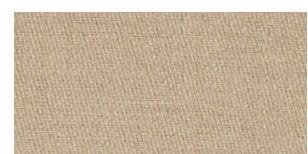
Natural Woven Shade



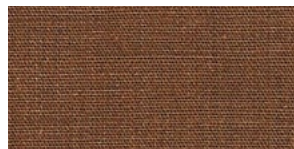
**TR01 Soft White**  
Max. seamless width: 110"  
Cotton



**TR02 Linen**  
Max. seamless width: 110"  
Cotton



**TR03 Khaki**  
Max. seamless width: 52"  
Cotton



**TR04 Sepia**  
Max. seamless width: 52"  
Cotton/Poly



**TR06 Asher**  
Max. seamless width: 52"  
Cotton/Poly

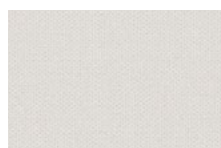
**BLACKOUT** – A densely woven insulating liner that blocks light and adds privacy. Works well in bedrooms, media rooms or when room darkening is desired.



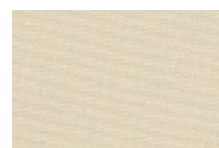
Natural Woven Shade



**BO00 Bright White**  
Max. seamless width: 108"  
Cotton w/Rayon Acrylic Latex



**BO01 Soft White**  
Max. seamless width: 108"  
Cotton w/Rayon Acrylic Latex



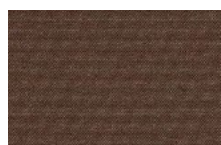
**BO02 Linen**  
Max. seamless width: 108"  
Cotton w/Rayon Acrylic Latex



**BO03 Khaki**  
Max. seamless width: 52"  
Cotton w/Rayon Acrylic Latex



**BO04 Sepia**  
Max. seamless width: 108"  
Cotton w/Rayon Acrylic Latex



**BO05 Umber**  
Max. seamless width: 108"  
Cotton w/Rayon Acrylic Latex



**BO07 Mist**  
Max. seamless width: 108"  
Cotton w/Rayon Acrylic Latex



**BO08 Black**  
Max. seamless width: 52"  
Poly w/Rayon Acrylic Latex



# Have you considered your Privacy Levels?

## Troubleshooting Guide

### INDEPENDENT DUAL SHADES

An independent rollershade mounted behind a natural roman shade provides flexible sunlight and privacy control. Rollershades are offered in a range of weaves and opacities giving you flexibility to control the environment.

#### DETAILS

- Crafted to chosen style specifications and method of operation  
Old Style, Traditional Style, Natural Roller Style, Performance Rollershade

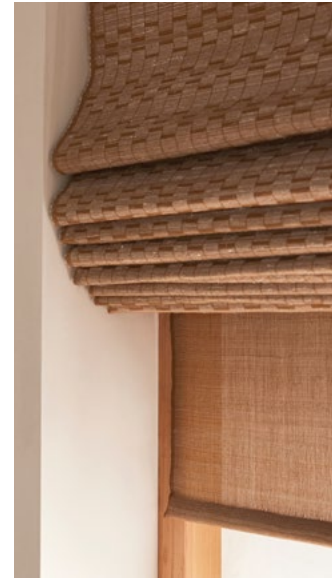


#### DESIGN CONSIDERATIONS

- If ordering front and back shades as inside mount, calculate casement depth requirements, see chart below
- If casement depth is limited specify roman style shade outside mount and Rollershade inside mount, see chart below
- For shared headrail options contact H&F

#### HELPFUL HINTS

- Natural Roller Style shades or Performance Rollershades are available
- Sidemark each shade by room to ensure proper matching of shades during installation



Roman | Roller Dual Shade  
Inside Mount

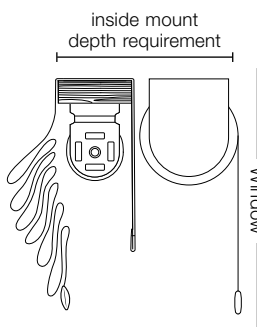
### CASEMENT REQUIREMENT ESTIMATOR

	Legacy Clutch Standard	Legacy Clutch Slim	Ultra Clutch	Newton	Sonesse Wirefree				Sonesse Wired Low Voltage		Sonesse Wired Line Voltage	
					Ultra 30	28	28 w/external battery	*28 Slim	30 DC	Ultra 50 DC	Ultra 50 AC	40 AC
Roman Shade	2¼"D	1½"D	2½"D	2¼"D	2¼"D	2¼"D	2½"D	1¾"D	2¼"D	3½"D	3½"D	3½"D
Roller Shade	N/A	N/A	3¼"D	3¼"D	3¼"D	3¼"D	4¼"D	N/A	3¼"D	4¼"D	4¼"D	4¼"D

\*28 Slim: Max. Width 96"

For Lutron, Crestron or other Customer Provided Motors (CPM) contact an Automation Specialist for dimensions

### CASEMENT CALCULATION EXAMPLE



Add specified style casement depths together to determine total casement requirement

$$\begin{array}{r} 2\frac{1}{4}" \text{ Roman Sonesse Wirefree} \\ + 3\frac{1}{4}" \text{ Roller Sonesse Wirefree} \\ \hline 5\frac{1}{2}" \text{ Casement depth requirement} \end{array}$$

#### HELPFUL HINT

- For precise calculations based on selected fabric, refer to hartmannforbes.com or contact H&F



Calculator



# Have you considered your Privacy Levels?

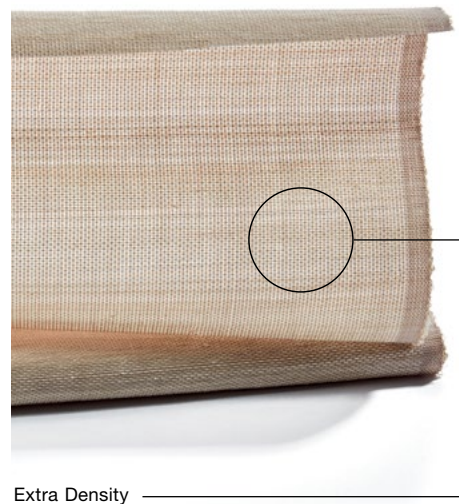
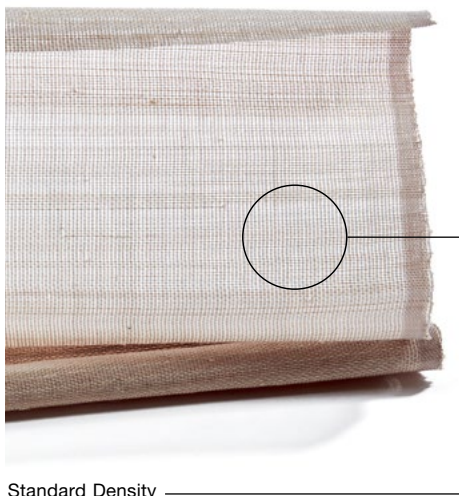
## Troubleshooting Guide

### EXTRA DENSITY WEAVING

An exceptional aspect of our custom handwoven Grassweave Collection is the ability to add extra weft fibers into the design to enhance privacy and light blockage. Refer to [hartmannforbes.com](http://hartmannforbes.com)

#### DETAILS

- The percentage of density will depend on the individual weave design
- Roller Style shades with extra density may have size limitations due to roll diameter, contact H&F for support



## HARTMANN & FORBES®

PO Box 1149 | Tualatin, OR 97062 | [hartmannforbes.com](http://hartmannforbes.com)  
t 503.692.9313 | tf 888.582.8780 | f 503.692.9315