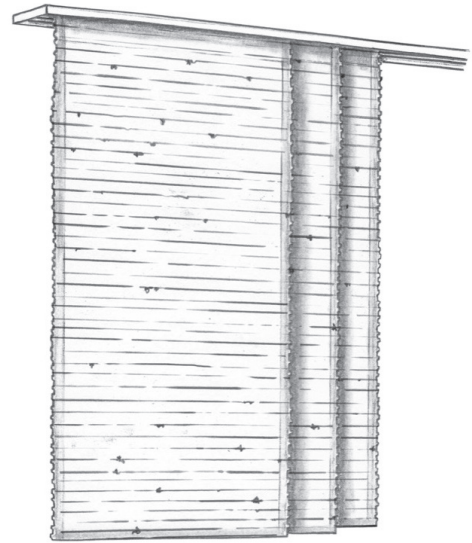




# Installation Instructions

## PANELSCREENS



## Warranty

Hartmann&Forbes warrants to the original purchaser ("purchaser") that its windowcoverings ("products" or "the product"), when correctly installed and operated in strict accordance with the installation instructions, will be free from defects in materials and workmanship for FIVE (5) YEARS from the date of delivery (the "Warranty Period").

Subject to the following warranty exclusions, any products or parts determined to be defective during the Warranty Period will be repaired or replaced by Hartmann&Forbes at no-charge to the purchaser.

### NOT COVERED BY WARRANTY:

- Hartmann&Forbes products or parts which fail due to accident, alteration, improper use, abuse, neglect, normal wear, color-fading due to sunlight, atmospheric conditions, direct exposure to salt air or improper cleaning
- Any conditions or damage resulting from the removal of the product or reinstallation in the same or another window
- Labor costs and expenses associated with measuring and installing replacement products, shipping, packaging and returning merchandise, except as may be authorized by Hartmann&Forbes in advance
- Hartmann&Forbes motor-ready windowcoverings
- Customer-provided motors and parts
- Hartmann&Forbes Natural Wallcoverings
- Hartmann&Forbes By-the-Yard Textiles

To obtain Warranty service, contact the showroom or distributor from which you purchased your Hartmann&Forbes product(s) and, if it is determined that your claim is subject to warranty, Hartmann&Forbes will promptly repair or replace any defective parts at no-charge. Charge-backs for repair or installation costs will not be honored unless authorized by Hartmann&Forbes in advance. Hartmann&Forbes retains the right to determine the appropriate method for repairing or remaking any product.

AS-IS; NO OTHER WARRANTIES: THERE ARE NO OTHER WARRANTIES, EXPRESS OR IMPLIED, EXCEPT THIS LIMITED WARRANTY. HARTMANN&FORBES EXPRESSLY DISCLAIMS THE IMPLIED WARRANTIES OF MERCHANTABILITY AND FITNESS FOR A PARTICULAR PURPOSE.

LIMITATION OF REMEDIES: HARTMANN&FORBES SHALL NOT BE LIABLE FOR ANY DIRECT, INCIDENTAL OR CONSEQUENTIAL DAMAGES EXCEPT AS SPECIFICALLY LISTED ABOVE, AND SHALL NOT BE LIABLE IN ANY CIRCUMSTANCE FOR SPECIAL, INDIRECT, PUNITIVE, OR EXEMPLARY DAMAGES OR LOST PROFITS OF ANY KIND WHETHER BASED ON CONTRACT, WARRANTY, NEGLIGENCE, PRODUCT LIABILITY OR ANY OTHER THEORY OF RELIEF RESULTING FROM OR ARISING IN ANY WAY FROM YOUR PURCHASE OR USE OF HARTMANN&FORBES PRODUCTS.

Some states do not allow the exclusion or limitation of incidental or consequential damages, so the above limitation or exclusion may or may not apply to you.

## Care & Maintenance

- Vacuum panelscreens with an upholstery attachment to remove dust, hair or other airborne particles.
- Prolonged exposure to the elements will result in visible wear. It is recommended to open and close panelscreens on a regular basis to help ensure they wear more evenly.
- Ensure windows are dry to protect panelscreens from moisture caused by window condensation or rain. Prolonged exposure to moisture and extreme humidity will cause discoloration from mildew, which can be difficult to remove.
- In the event that wrinkling occurs, use a dry iron on a low setting, increasing the heat as needed. Do not exceed the medium heat setting or use steam.
- For more information about natural fibers and their unique characteristics, visit our website [hartmannforbes.com/care-maintenance](http://hartmannforbes.com/care-maintenance)

THIS DOCUMENT SHOULD REMAIN WITH THE HOMEOWNER

If shade is damaged, the hardware is missing or if you need assistance please contact customer relations at 888.582.8780 or email [hfc@hartmannforbes.com](mailto:hfc@hartmannforbes.com)

## Before You Begin

Please promptly remove panels from packaging to minimize creasing and wrinkling. Each shade is labeled to provide details for proper installation.

**PACKAGE LABEL**

Order & Item Numbers	<b>107008-001</b> PANELSCREEN: GRASSWEAVE [WTS]	<b>1 of 1</b> REQ: 07/29/19
	1 SHADES USA	PO: 107008
Panel Dimensions	CLR: LE1012	120 X 60
	RM:	SM: LIVINGSTON
	Route:	MNT:OUTSIDE
	Ship Via:	
	Showroom: HF	

Mount

### TOOLS REQUIRED

- Power Driver
- Tape Measure
- ¼" Extension Hex or Phillips Bit
- ⅛" and ⅜" Drill Bit
- Level
- Pencil
- Wall Fasteners appropriate to the mounting surface
- Pliers

### INSTALLATION HARDWARE

Quantity and type of hardware included depends on shade dimensions, specifications and control method.



Tension Pulley



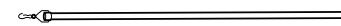
Inside Mount & Ceiling Brackets



Outside Mount Brackets



#8 x 1½" Wood Screws

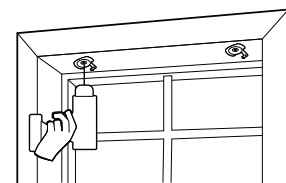


Control Wand

## PANELSCREEN INSIDE MOUNT (IS)

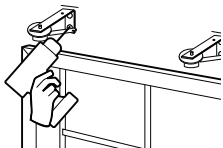
**1** Position the mounting brackets 3½" from the edge of the window casing on each side. If ceiling mounting, center track in desired location, then mark the ceiling on the ends of the track with a pencil. Position the mounting brackets 3½" inside end marks.

**2** Attach the brackets using provided #8 x 1½" screw and appropriate fasteners. Bracket arm should be at an 11 o'clock position. Be sure to leave brackets loose enough so that they can rotate 60° clockwise without difficulty. Ensure you have made adequate allowances for the panels to traverse smoothly without any interference. See below for Track, Pulley and Finishing instructions.



## PANELSCREEN OUTSIDE MOUNT (OS)

**1** Review ordered height of panels. Measure up from the floor this amount plus an additional 1" so panel will operate without interference from floor. Center the track to its desired location using height measurement as the top of the track. Mark the wall on the ends of the track with a pencil.



**2** Measure in from the end marks approximately 3½" and mark wall with pencil. The top of the marks on the wall should align with the top of the outer brackets. Attach using the provided #8 x 1½" screws and appropriate wall fasteners.

**3** Rotate the arm of the bracket so it is perpendicular to the wall. For wider panels multiple brackets may be needed. Install additional brackets 20" apart in the same manner as described in Step 2. See below for Track, Pulley and Finishing instructions.

## TRACK

### ATTACHING TRACK TO BRACKETS

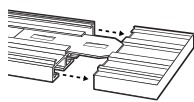
Hold track in position so that the center channel on top of the track fits over bracket wings. Rotate arm of bracket clockwise until the arm locks the bracket wings into place. Repeat with all brackets. Extra wide tracks may require a bridge. Slide tracks together and center the connecting bridge before installing tracks to brackets. Install brackets 3½" in from each side of bridge.



Inside Mount



Outside Mount with Bracket



Wide Track Bridge

## PULLEY & FINISHING

### INSTALLING THE TENSION PULLEY AND BATON

Insert cord loop into pulley. Mark height of pulley on wall or window casing, positioning pulley behind panels. Remove cord loop and attach tension pulley using provided #8 x 1½" screws, then re-insert cord. For hand traverse Panelscreens, clip the baton to the hole on the lead panel.

### ATTACHING PANELS

Attach each panel by lining up the Velcro® strip on the panel to the Velcro strip on the track. Moving from side-to-side press firmly to ensure the panels are level and secure.

If order includes a cornice for mounting over the Panelscreen, the track will be installed inside the cornice. Follow the Top Treatment Installation Instructions, then continue with the Track, Pulley & Finishing instructions.