

# HARTMANN & FORBES

NATURAL WALLCOVERING







# NATURAL WALLCOVERING

Sustainably cultivated and rapidly renewable materials are hand woven or crafted, paper backed and trimmed for the wall. The range of neutral colors, natural textures and timeless designs complement any residential, commercial or hospitality space and reflects the personality of the region that inspired it.



## SEABOARD

Inspired by that fleeting moment when the sea mist-covered boardwalk mirrors the sunset, Seaboard reflects this elegantly subtle shimmer in unique designs using fibers of abaca and hand-stripped water lillies.



WL414-36 Pier



WL414-03 Cape



WL414-12 Landing











## RIVERFRONT

Resembling reflective waters of a river winding through a city, the Riverfront series is highlighted by golden metallic threads interwoven within soft white and silver abaca.



WL415-03 Sail



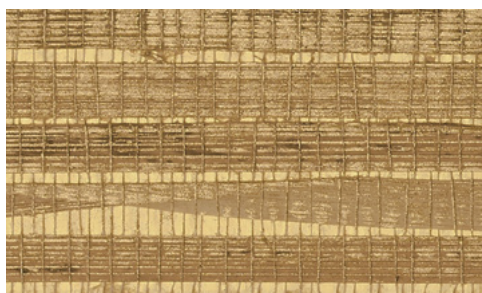
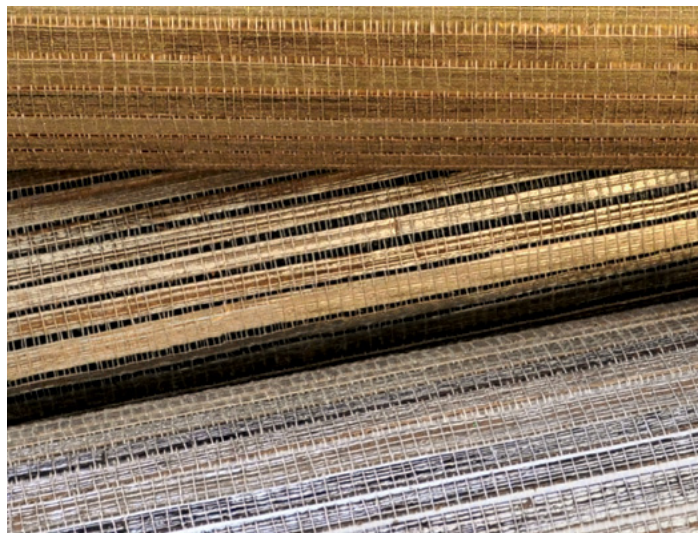
WL415-36 Mooring





## HARBOR

Sailboat-dotted inlets and ocean sunbeams inspire this eye-catching design. Hearty bac bac fiber is hand-stripped, handwoven, backed with colored paper, then washed with white or metallic pigments. This artisanal process creates a dimensional wallcovering of extraordinary character.



WL420-51 Catalina



WL420-45 San Juan



WL420-21 Nantucket



WL420-42 Rockport

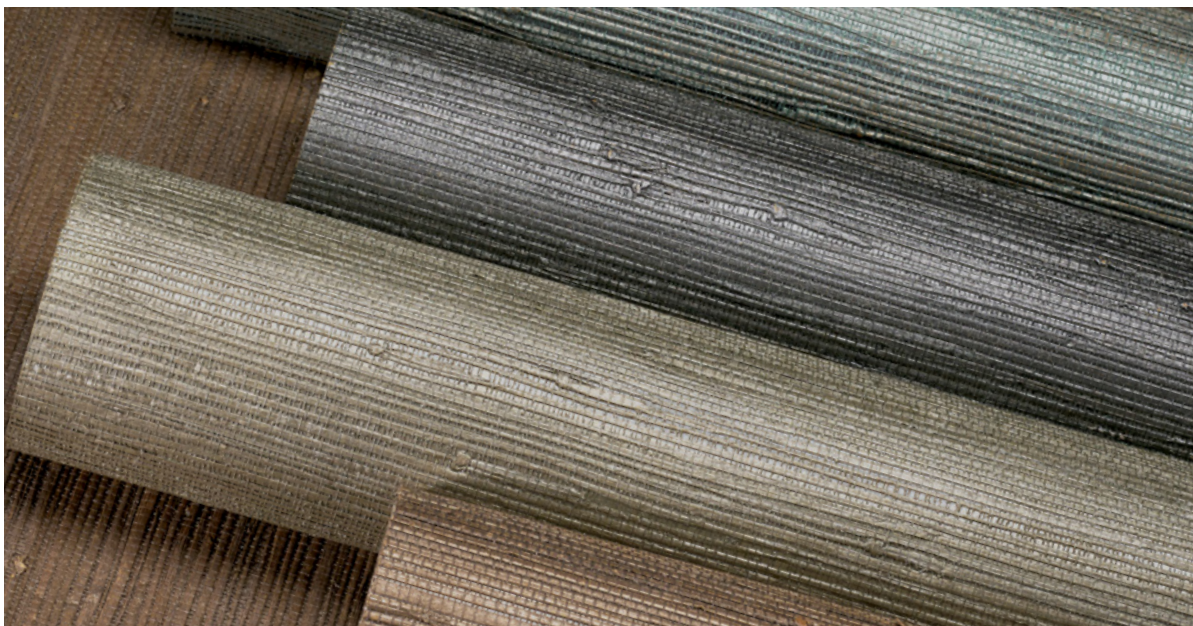












## PENINSULA

Mineral browns and seafoam greens, swirl and eddy in energetic motion over handwoven raffia with exposed micro knots. A pearlized glaze adds subtle glimmer to the weave and lends instant radiance to a space.



WL417-60 Haze



WL417-45 Beach



WL417-15 Sea Foam



WL417-33 Sea Break





WL418-06 Shell



WL418-33 Sea Mist



WL418-15 Pebble



WL418-42 Tortoise



## ISLAND COAST

Elemental marine hues wash over this classic handwoven raffia weave with clear lacquer finish for subtle sheen. A contemporary classic that invites the outdoors in.



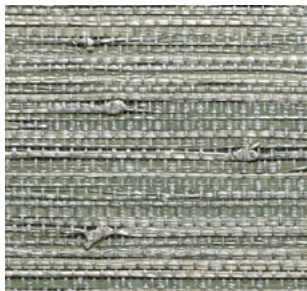






## SUNDANCE

The Utah Canyonland is a revered place devoted to the exploration of art, nature and cultural heritage. Constructed from tightly-woven paper fiber, the color palette is a striking combination of variegated earth tones with gold metallic overlay.



WL403-65 Wasatch Peak



WL407 Elkhorn



WL402-72 Red Rock



WL406 Rockport



WL405 Jordanelle



WL408 Deer Valley



# CASCADIA

An energetic metropolis is nestled between the volcanic peaks of the Cascade Range and the shimmering waters of the Puget Sound. Fresh and dynamic, these weaves embody the beauty of the Pacific Northwest.



WL310 Rainier



WL311 Queen Anne



WL315 Pinehurst



WL313 Alki



WL312 Pike



WL314 Madrona



WL316-84 Sandpoint









## TAHOE

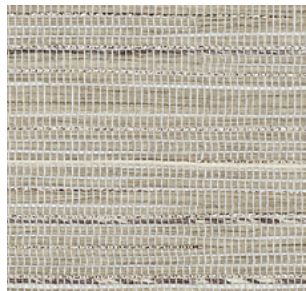
Drawing inspiration from the golden tones that ignite the lip of Lake Tahoe's snow-lined shores, this series' blended weave of gold metallic threads into a woven paper backdrop encapsulates Tahoe's stunning late winter evenings.



WL410-81 Starlight



WL410-06 Snowdrift



WL410-12 Icecap



WL410-21 Sundown





WL419-21 Badlands



WL419-33 Bighorn

## BIG SKY

The spectacular color display of Montana's open ranges is translated into this vigorous textural weave of jute and linen. Exposed knots and striated sagebrush colors contribute to a strong linear design.

Width: 36" (91.4cm) | Length: 8yds (7.3m)





WL364 Cypress



WL365 Sequoia



WL366 Ventana



## SANTA LUCIA

Windswept seas and rugged shorelines are nearly palpable in the weaves of the Santa Lucia series. Each pattern gracefully infuses visions of cleansing mists, wild bluffs and coastal skies into any interior.



## HIGH DESERT

The High Desert series combines the stark beauty of the back country with the tenderness of life that thrives there. Striated, textured and dramatic, each weave exudes the warmth and character that draws people to the desert.



WL358 Sonoran



WL351 Palm Dunes



WL353 Ridgecrest



WL357 Sedona



WL354 Sweetwater



WL355 Sage Creek



WL356 Saddle Pass



WL352 Mineral Springs



WL359 Mojave





## NORTH ESTATE

The hand-hewn weaves of the North Estate series provides walls with a cultivated and distinct patina reminiscent of fertile, sun-dappled valleys draped with vine-ripened fruit.



WL323 Barrique



WL321 Blanc



WL325 Claret

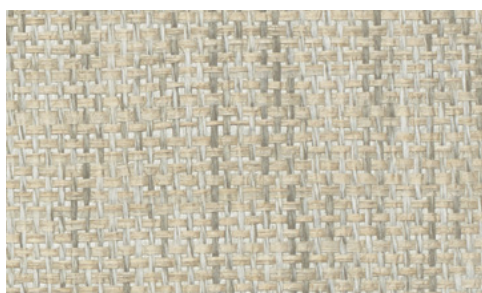


WL322 Chateau



WL326 Domaine





WL409-15 Chaff

## ACRE

High on a Montana plateau at the edge of a pond, sun-bleached grasses sway in the wind. Horses gather to sip the clear water. These designs draw upon the serenity of the breeze, grass and water.



WL409-12 Oat



WL409-21 Hay

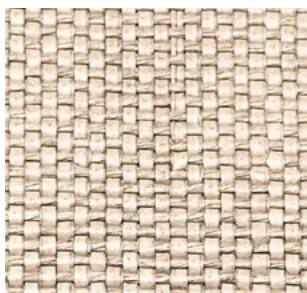


# HILL COUNTRY

The Hill Country series evokes the unending vistas of the open range. Each design proudly shares the texture, warmth and rich character of the prairie's natural grassland.



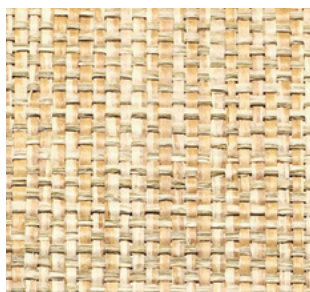
WL349 Muhly



WL348 Chaparral



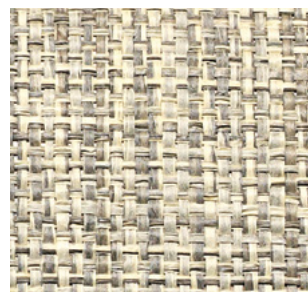
WL346 Wildseed



WL344 Ranchgrass



WL345 Verdure

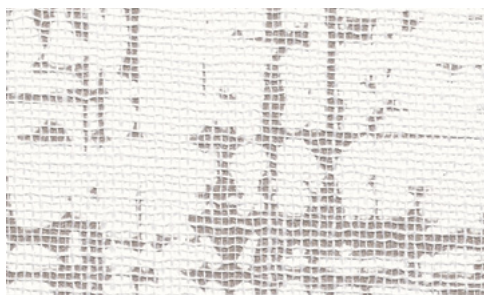


WL347 Greystem

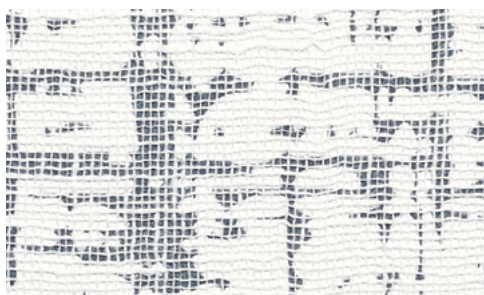








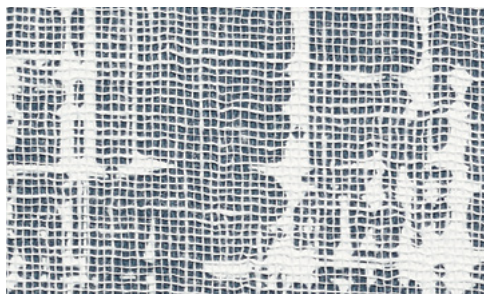
WL422-15 Boulevard



WL422-60 Skyway



WL422-09 Walkway



WL422-84 Rooftop



## UPTOWN

This refined wallcovering conveys the energy of urban construction. An abstract grid design is enlarged, rotary printed, then a thin layer of linen delicately hand applied to soften the effect. The result is a seamless backdrop that adds an element of the unexpected.

Width: 36" (91.4cm) | Length: 8yds (7.3m)

Shown: WL422-09 Uptown – Walkway, Wallcovering | LE1012 Elements – Farandine, Drapery

888.582.8780 | HARTMANNFORBES.COM





WL333 Telfair

## COLONIAL

The Colonial series recalls the classic elegance of traditional Southern style. Soft, muted hues of nature combine with a delicate pattern to create a new level of refinement in wallcoverings.



WL334 Sorrel



WL335 Chippewa



WL336 Forsyth



# DISTRICT

The unmistakable history of our nation's capital is reflected in the District series' warm colors and clean lines, which honor the past while celebrating today's contemporary design ideals.



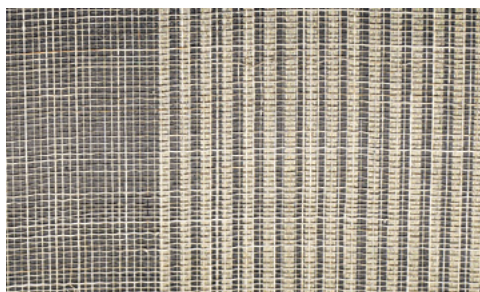
WL301 Capitol



WL304 Georgetown



WL302 Dupont



WL303 Trinity



WL305 Bethesda









## MONTEREY

The tidal beauty of Monterey Bay flows in this design of shifting sand and sea-smoothed pebbles. The application of digital printing on traditional grasscloth makes this a contemporary take on a classic wallcovering.



WL421-57 Sea Glass



WL421-60 Dark Shell



WL421-15 Tide Stone



WL421-45 Reef

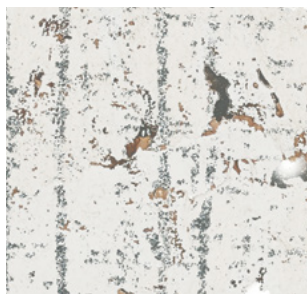






# CATHEDRAL

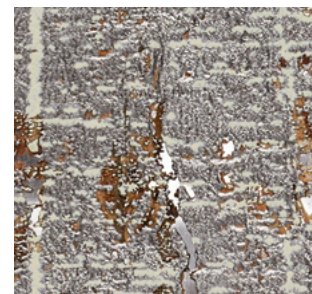
Resembling the glossy bark of rain-soaked aspens in the Cathedral region of the Colorado mountains, this innovative design is created with hand-sliced cork skillfully placed on metallic backing paper, then printed with a design inspired by winter woodlands. This meticulous process results in a lasting impression.



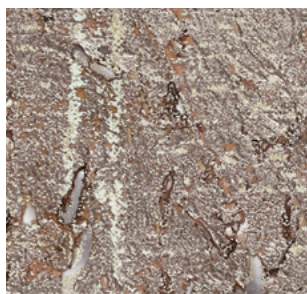
WL423-03 White Gold



WL423-09 Gilded



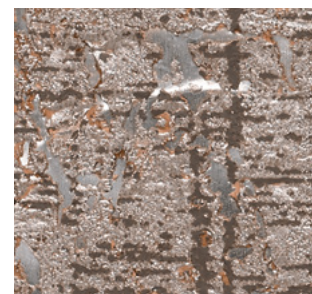
WL423-36 Silver



WL423-15 Pewter



WL423-39 Bronze



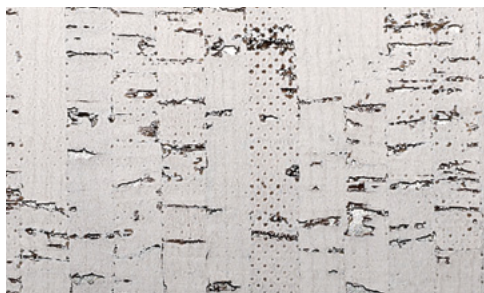
WL423-18 Copper





## ALPINE

Hand-stripped cork reminiscent of snowcapped summits, rich pine forests and glacial meadows brings home the seldom-experienced richness of a soft-to-the-touch wilderness.



WL374 Aspen



WL375 Bristlecone



WL376 Pine

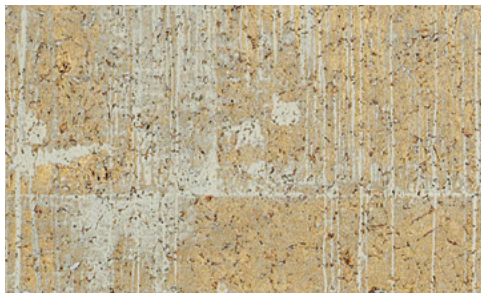


WL377 Larch



WL378 Spruce





WL381 Lincoln Park

## LAKE SHORE

The radiant finish of the Lake Shore series is reminiscent of skyscrapers rising up from Lake Michigan in downtown Chicago. Hand-peeled cork is backed with metallic paper backing and hand blocked with a metallic finish.



WL382 Bucktown



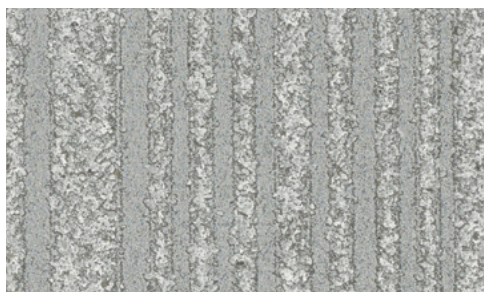
WL383 Edgewater





## NORTHSANDS

The Northsands series features a neutral palette of vertical mica sand stripes against the subtle shimmer of a metallic backdrop. Northsands can be installed railroaded to create a horizontal stripe.



WL412-36 Sterling



WL412-03 Pearlescent



WL412-06 Opalescent



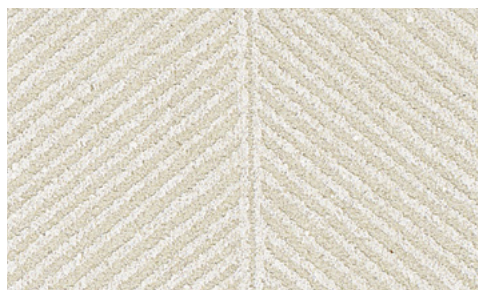
WL412-21 Gilt





## COASTLINE

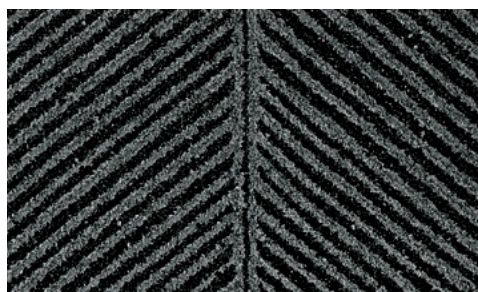
Reflecting the dramatic rise and fall of a spring tide, the Coastline series presents an oversized, herringbone-inspired mica sand pattern complemented by a dramatic metallic backdrop.



WL413-03 Clouded



WL413-45 Golden



WL413-84 Eclipse



