

MICHAEL S SMITH
BY
HARTMANN & FORBES®
DESIGNER COLLABORATION





MICHAEL S. SMITH

"THIS COLLECTION IS ABOUT REIMAGINING
THE PAST TO CREATE SOMETHING
ACCESSIBLE FOR BEAUTIFUL INTERIORS"

Known for his signature blend of European Classism and American Modernism, Smith's collection exudes a well-travelled, comfortable sensibility. The blending of historically referenced patterns in bold, simple colors, combined with the textural detailing expected from Hartmann&Forbes, offers a fresh, globally-inspired collection of natural window and wallcoverings.



WALLCOVERING

MADELEINE

At once romantic and refined, the Madeleine wallcovering was inspired by a fern motif often used by Madeleine Castaing, the iconic 20th-century French designer and antiques dealer. Natural sisal is meticulously embroidered in a palette of sage, linden, and teal, creating a dimensional pattern of interlocking ferns, which is framed by a crisp windowpane grid.



WLMS77-30 Linden



WLMS77-54 Sage



WLMS77-55 Teal

GRASSWEAVE [WTS]

JACOB STRIPE

For Jacob Stripe, lustrous, textural ramie is handwoven in a variegated-stripe pattern that recalls the charming scalloped shop awnings found in French seaside villages. Its relaxed, sun-washed look and soft-hued palette provide the perfect complement to the Madeleine wallcovering.



LEMS76-30 Linden



LEMS76-54 Sage



LEMS76-55 Teal

Window Price Group: 5 | Max Width: 180"
Available Styles: Roman, Roller, Top Treatment

Wall Width: 36" (91.4cm) | Length: 9yds (8.2m)

Shown: WLMS77-20 Madeleine – Linden, Wallcovering



GRASSWEAVE [WTS]

CITY STITCH

This handwoven design is a modern interpretation based on ancient Japanese Sashiko stitching from the Edo period. A unique weave that combines functional embroidery with meticulous, decorative stitching to create a sophisticated mix of texture, color and pattern.

features a 2" plain woven border



LEMS71-06 Ivory



LEMS71-09 Limestone



LEMS71-72 Ruby



LEMS71-57 Lapis



LEMS71-54 Malachite



WLMS75-42 Bronze



WLMS75-54 Malachite



WLMS75-57 Lapis



WLMS75-72 Ruby

WALLCOVERING

KAMAKURA

Merging geometric shapes with Japanese imagery, this complex composition depicts beauty and serenity in a thoughtful, artistic way. In transposing the stenciled design to a textured grasscloth, Smith has created a layered backdrop that can coordinate seamlessly with both modern and traditional interiors.

Window Price Group: 5 | Max Width: 180"
Available Styles: Roman, Top Treatment

Wall Width: 36" (91.4cm) | Length: 8yds (7.3m)

Shown: LEMS71-54 City Stitch – Malachite, Traditional Style Roman
WLMS75-54 Kamakura – Malachite, Wallcovering





GRASSWEAVE [WTS]

CASCADE

An elegant and sophisticated use of the traditional striation pattern, employing soft colors of handwoven threads. The vertical stitch pattern is asymmetrical and highlighted by subtle but glamorous metallic strands.



LEMS70-12 Ivory



LEMS70-55 Malachite

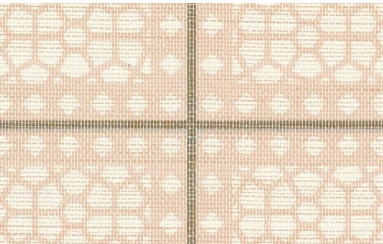


LEMS70-51 Limestone

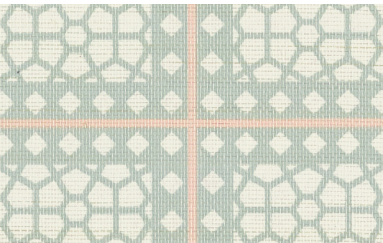
WALLCOVERING

MAJORELLE

Inspired by the famous French artist Jacques Majorelle and his world-renowned garden and home in Marrakesh, Morocco, this sublime wallcovering features graphic arrangements reminiscent of architectural lattice screens found in palaces and temples from Morocco to the Middle East.



WLMS73-06 Sandstone



WLMS73-32 Celadon

Window Price Group: 5 | Max Width: 180"
Available Styles: Roman, Roller, Top Treatment

Wall Width: 36" (91.4cm) | Length: 8yds (7.3m)

Shown: LEMS70-12 Cascade – Ivory, Old Style Roman
WLMS73-06 Majorelle – Sandstone, Wallcovering



CWMS81 Hinoki



CWMS80 Matsu



CWMS82 Tochi

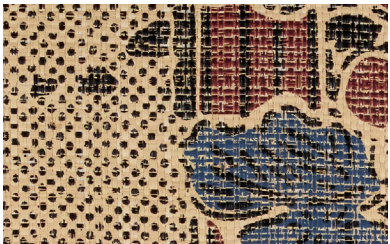
COLOURWEAVE [TTS]

JUNSEI

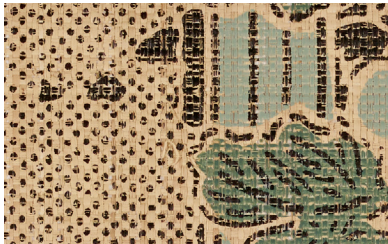
Inspired by traditional Japanese screens, this refined weave is handwoven with thinly sliced bamboo, allowing the sunlight to gently filter in.



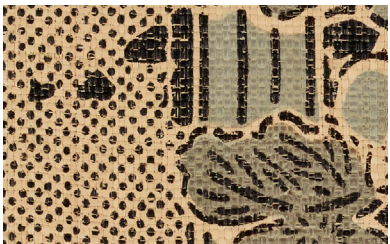
WLMS74-51 Amber



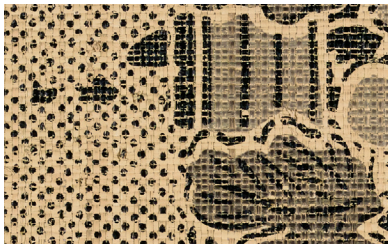
WLMS74-57 Red/Blue



WLMS74-30 Verde



WLMS74-18 Stone



WLMS74-12 Mist

WALLCOVERING

JAPÓN GARDEN

An enduring, woven wallcovering imbued with rich, bold patterns that evoke flora in unusual and unexpected ways. Inspired by antique, hand-carved abaca stencils, these designs bring depth and interest to any room. Hand-mixed, saturated pigments are printed over a neutral background to create a warm, artistic and inviting effect.

Window Price Group: 3 | Max Width: 94"
Available Styles: Roman, Roller, Top Treatment

Wall Width: 36" (91.4cm) | Length: 8yds (7.3m)

Shown: CWMS80 Junsei – Matsu, Sudare Style Roman
WLMS74-51 Japón Garden – Amber, Wallcovering





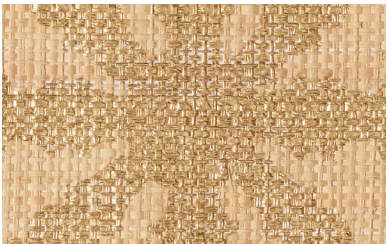
WALLCOVERING

AGRA LATTICE

Inspired by beautiful, hand-turned spindle designs used throughout Indian architecture for generations, Agra Lattice depicts a maze-like, hand-stenciled pattern with abstracts that play upon form, texture and movement. Smith has adapted the traditional spindle motif and has reinterpreted it into a rhythmic arrangement on rich, woven wallcovering that is as meditative as it is vibrant.



WLMS72-27 Sandstone



WLMS72-51 Limestone



WLMS72-57 Azul



Width: 36" (91.4cm) | Length: 8yds (7.3m)

Shown: WLMS72-57 Agra Lattice – Azul, Wallcovering