

J RANDALL POWERS  
BY  
HARTMANN & FORBES®  
DESIGNER COLLABORATION







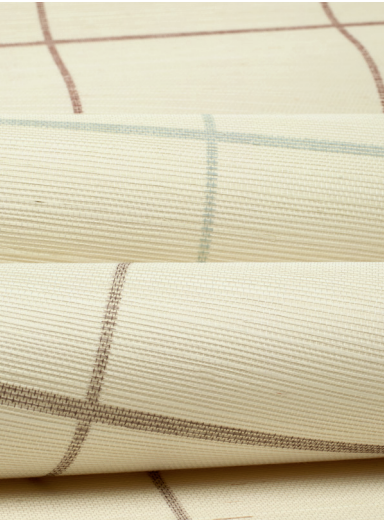
## J. RANDALL POWERS

---

“THIS COLLECTION IS ABOUT THE  
CONFIDENCE OF A STRUCTURED PATTERN,  
TAILORED AND REFINED, BUT OF A SCALE  
THAT IS PLAYFUL AND INVIGORATING”

Celebrated for his classic, yet cosmopolitan style, the  
J. Randall Powers Collection reveals the artisanal quality  
of Hartmann&Forbes' handwoven textiles combined with  
Powers' penchant for tailored patterns with a playful twist.





# CHRISTOPHER CHECK

A crisp windowpane pattern defines the Christopher Check Collection. Handwoven windowcovering of ramie, and gravure-printed wallcovering on a ground of natural sisal, are framed in bold hues, imparting a graphic punch that enlivens the rigorous geometry. Sophisticated yet friendly, it suits formal and informal spaces alike.

## GRASSWEAVE [WTS]



LEJP21-72 Brick



LEJP21-33 Slate

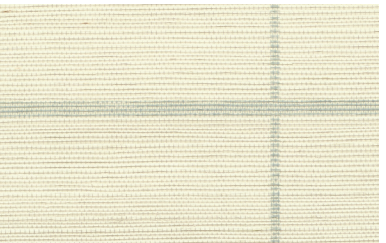


LEJP21-18 Taupe

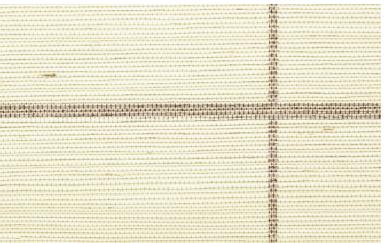
## WALLCOVERING



WLJP24-72 Brick



WLJP24-33 Slate



WLJP24-18 Taupe

**Window** Price Group: 5 | Max Width: 180"  
Available Styles: Roman, Top Treatment

**Wall** Width: 36" (91.4cm) | Length: 12yds (10.9m)

Shown: LEJP21-72 Christopher Check – Brick, Old Style Roman  
WLJP24-72 Christopher Check – Brick, Wallcovering





GRASSWEAVE [WTS]  
BALDWIN STRIPE

An open weave of yarns and dyed ramie form a relaxed rectangular motif. Its intricate warp and weft lending depth and detail to the interior geometry. Artfully accented with bands of color in a subdued, subtle palette of mist and cream, the vertical stripes add layers of tonal beauty to the gauzy ground.



LEJP23-36 Mist



LEJP23-06 Cream

**Window** Price Group: 5 | Max Width: 120"  
Available Styles: Roman, Top Treatment

Shown: LEJP23-36 Baldwin Stripe – Mist, Traditional Style Roman





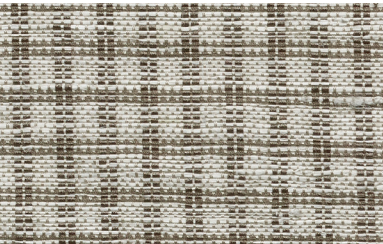
GRASSWEAVE [WTS]

# APSLEY CHECK

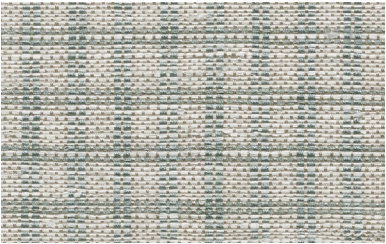
Clean-lined and classic, Apsley Check is defined by small, even squares that recall the timeless Shepherd's check. Woven of refined ramie, this weave evokes the textural, lightweight hand of linen and pairs beautifully with the geometric Christopher Check series.



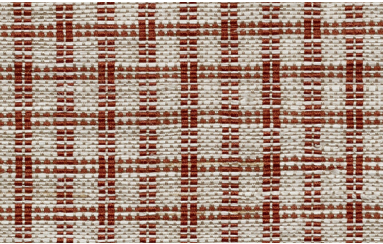
LEJP20-03 White



LEJP20-18 Taupe

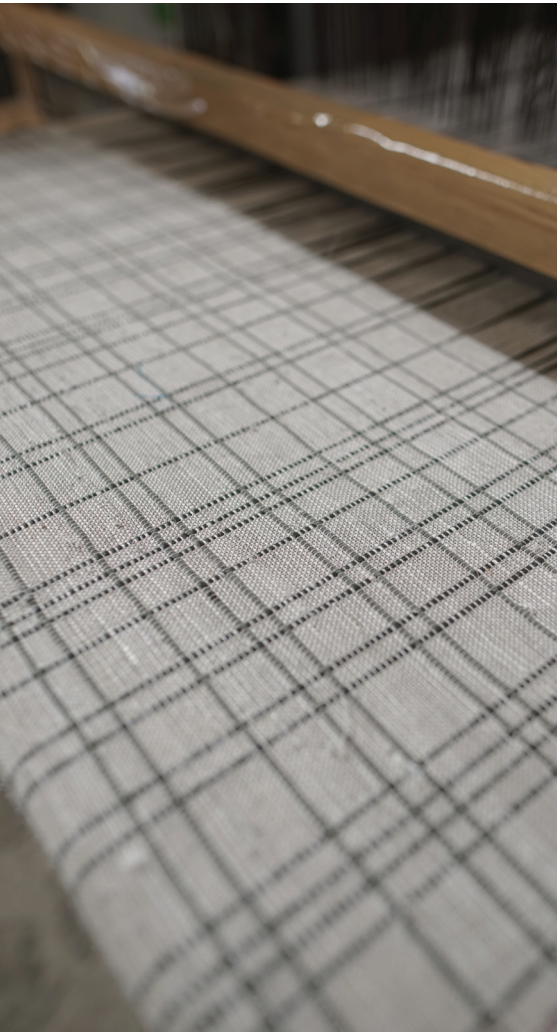


LEJP20-33 Slate



LEJP20-72 Brick





# JG PLAID

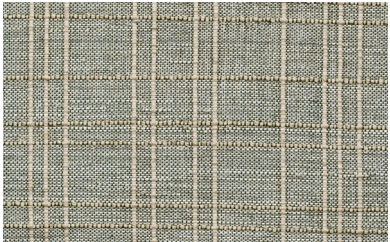
A fresh take on traditional plaid, strong crisscrossing pencil stripes in an irregular sequence form an intriguing dimensional look. A woodland palette of moss and linen play relaxed counterpoint to the structured sensibility.

Woven-to-Size windowcovering is intricately handloomed of refined ramie, while handcrafted wallcovering is gravure printed atop handwoven sisal.

## GRASSWEAVE [WTS]

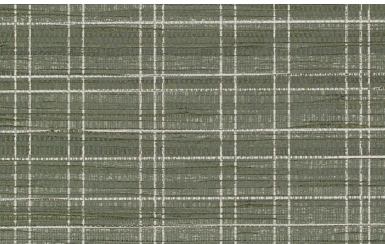


LEJP22-12 Moss on Linen



LEJP22-78 Linen on Moss

## WALLCOVERING



WLJP25-78 Linen on Moss

**Window** Price Group: 5 | Max Width: 180"  
Available Styles: Roman, Top Treatment

**Wall** Width: 36" (91.4cm) | Length: 12yds (10.9m)

Shown: LEJP22-12 JG Plaid – Moss on Linen, Old Style Roman  
WLJP25-78 JG Plaid – Linen on Moss, Wallcovering

