

HARTMANN & FORBES®



New for Spring 2026: Hartmann&Forbes Presents *Meandering Wilderness*

A sensory journey through nature, *Meandering Wilderness* unfolds as a symphony of sights, sounds, and textures, inviting moments of reflection and a deeper connection to the wild's poetic rhythm.

Inspired by the gentle wandering through a dense forest, this collection pays homage to nature's poetry. Each handwoven shade, artisanal wallcovering, and refined textile captures nature's quiet splendor, from the subtle elegance of misty mornings and the velvety depth of lush moss to the whispered cadence of leaves beneath your feet.

"The forest reminds us to slow down, to listen, to see beauty in stillness," shares Rebecca Welch, Design Director. "With this collection, we sought to translate that feeling through the play of shadow and light and the weave's natural rhythm, to create designs that layer beautifully and bring sanctuary to the home."

Rooted in craftsmanship and reverence for the natural world, the collection explores organic textures and nuanced weaves that echo nature's own design language, layered, tactile, and quietly expressive.

The palette is drawn from the forest's most contemplative moments. Velvety greens, mossy browns, soft grays, and earthy neutrals come together in effortless harmony, evoking a sense of calm discovery and timeless connection.

HARTMANN&FORBES®
NATURAL WINDOWCOVERINGS, WALLCOVERINGS & TEXTILES



All press inquiries please contact:
Jamie Hoffman at jamie@spread-communications.com or 201-400-8512

TENDRIL

An earthy fragrance lingers in the hand-placed vetiver roots, their fibrous texture stretching across the shifting tones of the warp. Like vines finding their path, the strands create a surface that feels both rooted and fluid, casting light with nuanced dimension.



WOVEN-TO-SIZE GRASSWEAVE WINDOWCOVERING

All press inquiries, please contact:
Jamie Hoffman at Jamie@spread-communications.com or 201-400-8512

TENDRIL



WOVEN-TO-SIZE GRASSWEAVE WINDOWCOVERING

All press inquiries, please contact:
Jamie Hoffman at Jamie@spread-communications.com or 201-400-8512

BIRDSONG



Like the gentle chorus that awakens the morning, Birdsong carries a sense of rhythm and natural poetry. Handwoven with an airy interplay of luminous banana fiber and softly textured cotton, the design feels alive with movement. Its sheer structure allows light to drift through in shifting patterns, much like sunlight breaking through a canopy of branches at dawn.

WOVEN-TO-SIZE GRASSWEAVE WINDOWCOVERING

All press inquiries, please contact:
Jamie Hoffman at Jamie@spread-communications.com or 201-400-8512

REVERIE

Reverie evokes a contemplative state, with papyrus and arrowroot woven in measured alternation to form a calm, organic surface. Each handwoven strand carries subtle nuance, diffusing light into a soft, tranquil presence.



WOVEN-TO-SIZE PAPYRUSWEAVE WINDOWCOVERING



All press inquiries, please contact:
Jamie Hoffman at Jamie@spread-communications.com or 201-400-8512

HONEYCOMB



SOFT NATURAL FABRIC WINDOWCOVERING



Handwoven with the slow cadence of the loom, Honeycomb echoes the quiet geometry of nature's design. Linen and cotton slub yarns interlace with subtle variation, creating a dimensional weave that softens light into a warm, textural glow.

All press inquiries, please contact:
Jamie Hoffman at Jamie@spread-communications.com or 201-400-8512

STRIA



SOFT NATURAL FABRIC WINDOWCOVERING



Named for the fine streaks found in stone and wood, Stria traces subtle lines of light across a sheer linen ground. Smooth specialty yarns drift through the weave at unexpected intervals, creating an airy textile with depth, where every variation tells a story shaped by the loom. MASTERS OF LINEN CERTIFIED.

All press inquiries, please contact:
Jamie Hoffman at Jamie@spread-communications.com or 201-400-8512

PARTERRE



SOFT NATURAL FABRIC WINDOWCOVERING



Inspired by the measured order of a parterre garden, this design rests on a base of pure linen where embroidery moves in harmonious flow, creating lines both architectural and organic. Light drifts across the raised threads, casting delicate shadows that enrich the natural fabric's composed, dimensional beauty

All press inquiries, please contact:
Jamie Hoffman at Jamie@spread-communications.com or 201-400-8512



LISCIO

Liscio captures the quiet poetry of natural textures in soft, timeless hues. Woven in Italy from a serene blend of linen and hemp, its smooth hand and grounded weight diffuse light into a tranquil glow, bringing an atmosphere of understated elegance and calm

SOFT NATURAL FABRIC WINDOWCOVERING

All press inquiries, please contact:
Jamie Hoffman at Jamie@spread-communications.com or 201-400-8512

VALE – WINDING PATH

Recalling the meander of a valley trail, each hand-placed strand of water hyacinth creates a textured composition of subtle irregularity. A soft color wash settles into the fibers, revealing tonal shifts that lend walls a sense of natural flow and quiet movement.



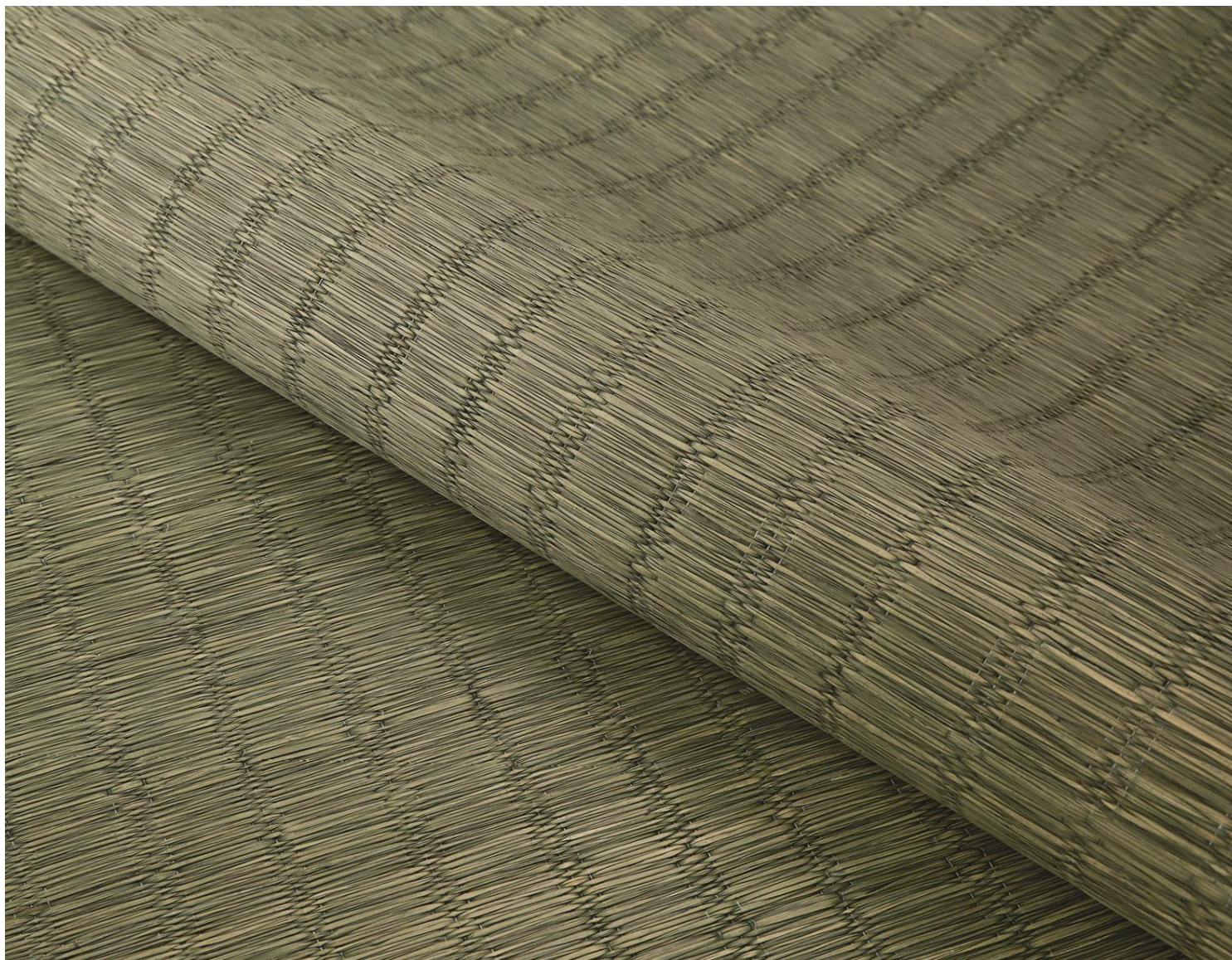
NATURAL WALLCOVERING



All press inquiries, please contact:
Jamie Hoffman at Jamie@spread-communications.com or 201-400-8512

VALE – LUSH MEADOW

Handwoven seagrass, dyed a rich meadow green, recalls blades of grass swaying in layered light. Its interplay of vertical warp and horizontal weft reveals subtle tonal variations, offering an atmosphere that feels both vibrant and serene



NATURAL WALLCOVERING



All press inquiries, please contact:
Jamie Hoffman at Jamie@spread-communications.com or 201-400-8512

VALE – HIDDEN RIDGE

Echoing the rugged contours of earthen slopes, hand-dyed banana stem is arranged in an unbound pattern of warm, shifting tones. The irregular composition and tactile grain create a grounded surface that radiates raw, natural character.



NATURAL WALLCOVERING



All press inquiries, please contact:
Jamie Hoffman at Jamie@spread-communications.com or 201-400-8512



PERFORMANCE FABRIC

ECO 106

ECO 106 is a translucent performance fabric defined by its evenly woven structure and subtle heathered coloration, offering the look of natural fibers in a refined texture. Crafted from non-toxic fibers and certified to Oeko-Tex Standard 100, it layers beautifully with natural woven shades while bringing understated sophistication to every space

All press inquiries, please contact:
Jamie Hoffman at Jamie@spread-communications.com or 201-400-8512

COLLECTION AT A GLANCE

WOVEN-TO-SIZE GRASSWEAVE WINDOWCOVERINGS

Handwoven to 180" wide without seams

TENDRIL

Content: Ramie/Vetiver



LE6909 Gold



LE6960 Ebon



LE7009 Golden



LE7060 Ebony

BIRDSONG

Content: Banana Fiber/Cotton



LE7106 Finch



LE7109 Wren



LE7115 Vireo



LE7160 Nightingale

All press inquiries, please contact:
Jamie Hoffman at Jamie@spread-communications.com or 201-400-8512

COLLECTION AT A GLANCE

WOVEN-TO-SIZE PAPYRUS WINDOW COVERINGS

REVERIE

Content: Pulp Fiber/Arrowroot



PE610-03
Whimsical White



PE610-06
Introspective Ivory



PE610-09 Harmonious
Honey



PE610-36
Daydreamy Grey



PE610-45 Musing
Umber



PE610-60 Pondering
Pewter

All press inquiries, please contact:
Jamie Hoffman at Jamie@spread-communications.com or 201-400-8512

COLLECTION AT A GLANCE

SOFT NATURAL FABRIC WINDOWCOVERINGS

STRIA

Content: Linen



EW153-03 Moonlit



EW153-24 Sunlit

LISCIO

Content: Linen/Hemp



EW159-06 Naturale



EW159-12 Lino



EW159-27 Corda



EW159-36 Ostrica

HONEYCOMB

Content: Linen/Cotton



EW400-06 Almond



EW400-12 Clove

PARTERRE

Content: Linen



EW154-27 Birch



EW154-36 Grove

COLLECTION AT A GLANCE

NATURAL WALLCOVERING

VALE

Content: Water Hyacinth



WL430-12 Winding Path

Content: Banana Stem



WL431-18 Hidden Ridge

Content: Seagrass



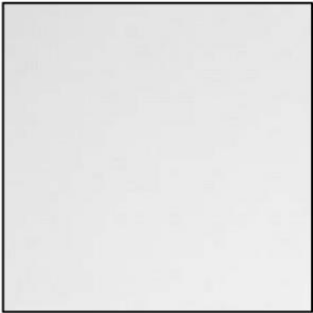
WL432-54 Lush Meadow

COLLECTION AT A GLANCE

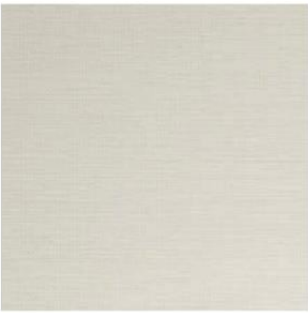
PERFORMANCE FABRIC

ECO 106

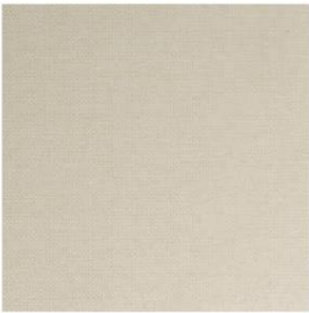
Content: Poly



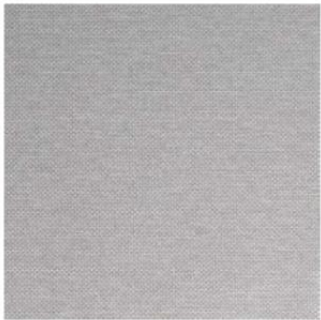
EC106-03 Camellia



EC106-06 Freesia



EC106-09 Yarrow



EC106-15 Hellebore



EC106-21 Tansy



EC106-69 Nerine



ABOUT HARTMANN&FORBES

Hartmann&Forbes was established with the goal of delighting interior designers worldwide by handcrafting natural home furnishings of distinction. They do this with innovative designs, uncompromising quality and exceptional delivery and service. With designs inspired by nature's raw beauty and artisanal workmanship that utilizes traditional handweaving and crafting methods, their award-winning windowcoverings, wallcoverings and textiles are made of unique best-of-class natural fibers that are sustainably cultivated in well-managed ecosystems. Hartmann&Forbes' products are available exclusively to the trade through a network of U.S. and international showrooms. For more information, visit hartmannforbes.com

All press inquiries, please contact:
Jamie Hoffman at Jamie@spread-communications.com or 201-400-8512