

HARTMANN & FORBES

SOFT NATURAL FABRIC





SOFT NATURAL FABRIC

A fresh translation of textural classics, the natural fabric collection offers hints of the exotic, while remaining grounded in the modern movement. Loomed in some of the world's oldest and most revered textile mills, fibers are carefully spun and dyed to a rich and earthy color palette.



Many of our linens carry the Masters of Linen mark, which guarantees excellence and 100% European traceability at each stage of processing.

NEW
SAHARA

Resembling windblown desert sands, this luxury linen exhibits a delicate rippling of soft color favoring the natural beauty of the desert. (shown railroaded)



Price Group: 4 | Max Seamless Width: 114"
Available Styles: Roman, Top Treatment

Shown: EW150-12 Sahara – Plateau, Flat Style Roman
WL424-03 Baja – White Sands, Wallcovering





NEW

MIRAGE

Heat reflecting from the barren desert floor delivers playful light refraction. The organic pattern of the Mirage Series captures this seemingly random effect.



EW149-03 Glint



EW149-09 Glow



EW149-12 Luminous



EW149-30 Echo



EW149-36 Illusion



EW149-79 Phantom



WEATHERED

The natural stone-washed palette of this soft, medium-weight linen delivers an easygoing attitude embodying a lived-in, carefree lifestyle.



EW104-12 Limestone **NEW**



EW104-18 Sandstone



EW104-32 Moonstone **NEW**



EW104-60 Graystone

Soft Natural Fabric



EW148-12 Earthen



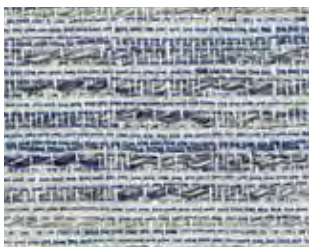
EW148-39 Root

FIELDS

A perfect expression of harmony in design. This linen beautifully blends two distinct textures into one evocative pattern. Gentle earth tones and visual texture from vertical warp fibers evoke images of undulating flax fields at harvest.



EW148-51 Bloom



EW148-57 Petal



EW148-84 Peat





RIBBED

With a raised pinstripe pattern, this sheer linen brings casual chic to an interior. The multi-color thread detail offers a dynamic and differentiated look.



EW105-06 Buff



EW105-60 Denim



EW109-06 Cotton

CORDS

Elegance with a rustic twist, this design features tufted cords artistically embroidered onto a heavy linen ground. As wearable as fashion, this contemporary textile will dress any window in chic style.



EW109-12 Burlap

ARBORETUM

With an elegant, vintage feel, this sheer design layers a charming abstract leaf motif on a warm cream backdrop.



EW108-21 Bask



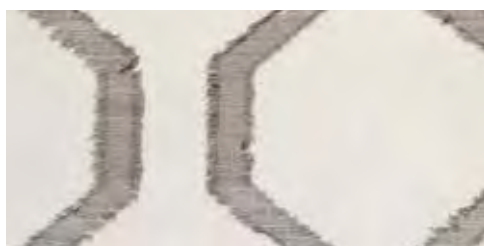
EW108-60 Shade







EW257 Angulo



EW256 Praca



EW259 Contorno



EW258 Moldar



GEOMETRY

A breezy lightweight linen that captures a modern geometric vibe. Offered in misty neutrals and blue, this hypnotic pattern of abstract ogees comes together to make a big impact.



Price Group: 5 | Max Seamless Width: 53"
Available Styles: Roman, Top Treatment

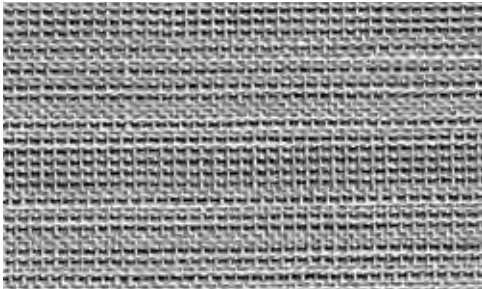
Shown: EW259 Geometry – Contorno, Drapery | LE1124 Driftwood – Togo, Old Style Roman
WL364 Santa Lucia – Cypress, Wallcovering

888.582.8780 | HARTMANNFORBES.COM

STRIE

An inspired melange of linen threads are loomed into an elegant heathered weave.

This sheer linen has a chic quality that elevates the style of a room.



EW147 Lagoa PG4
Max Seamless Width: 55"



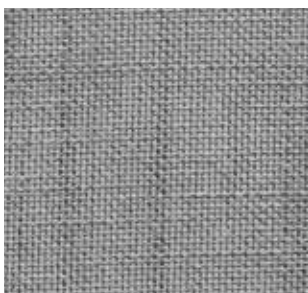
EW141a Andari PG3
Max Seamless Width: 50"



EW141t Tijura PG3
Max Seamless Width: 50"

BRUSHED

A durable lightweight poly/cotton sheer milled in France. Offered in a range of popular neutrals that work in harmony with any decor.



EW91m Merano



EW91g Genoa



EW91p Pisa



Design – The Suzanne Biers Company | Photo – Werner Segarra Photography Inc



EW144b Balem



EW144n Natal

SHEER STRIPE

An open-weave striping adds visual interest in this sophisticated sheer linen. Offered in a contemporary neutral palette with tonal heathering.



EW144o Ounda



EW144r Recliffe



EW140r Rocha



EW140L LeBlon



HUED STRIPE

Linear and airy, this relaxed linen features broad stripes in three complementary tones for a subtle color-block effect. The Hued Stripe series complements any interior with style and ease.



BOUCLE

A stunningly open weave that allows light to flood through its airy looped knit. Crafted of sumptuous Italian cotton/linen, this fabric has a weight and hangs beautifully for drapery or roman shades.



EW266 Crochet



EW262 Linsey



EW260 Etamine



EW264 Raschel

CHALLIS

Custom woven by a centuries-old Scottish textile mill, these fine woolens combine a sumptuously soft hand and exquisitely smooth drape. With their airy basketweave design and natural warmth, these woolens offer a welcoming interior backdrop.



EW214 Sagathy



EW210 Delaine



EW212 Tamis





RIDGED

As deceptively simple as it is versatile, this tailored stripe design is interpreted in a classic palette of muted taupe, ivory and white.



EW146a Amapa PG2
Max Seamless Width: 55"



EW32f Frejus PG3
Max Seamless Width: 50"



EW32b Biot PG3
Max Seamless Width: 50"



EW146f Fortaleza PG2
Max Seamless Width: 55"

PLAID

A traditional windowpane check pattern is masterfully adapted in a striking linen weave. A heavy, coarse thread woven in the weft, gives this fabric tactile interest and contemporary character.



EW145s Sao' Luis



EW145m Marceio





WHEAT

Inspired by flax fields in bloom, this sturdy linen/cotton blend captures pastoral beauty in all its glory, and transforms a window setting into an enchanted focal point.



EW234 Vela



EW233 Arropa



EW235 Pradlo

Price Group: 4 | Max Seamless Width: 50"
Available Styles: Roman, Top Treatment

Shown: EW234 Wheat – Vela, Drapery
LE1303 Tamin, Old Style Roman



LEAF

Reminiscent of a pencil sketch, this sturdy hemp/cotton blend captures abstract flora in an easy, non-linear pattern. The stylized design of floating leaves and vines are artistically rendered in a tone-on-tone design.



EW283 Lillieline



EW281 Bloemen



EW285 Blodau



ENTWINED

Soft, silk-like fabric frames meandering abaca fibers for an interesting light and texture play. Iridescent horizontal panels of gold and silver add luster and glamour to a room.



EW201 Lumen



EW202 Candela

