

MICHAEL S SMITH  
BY  
HARTMANN & FORBES®

DESIGNER COLLABORATION







# MICHAEL S SMITH

A unique collection created hand-in-hand with renowned designer Michael S. Smith. The blending of Michael's historically referenced patterns in bold, simple colors, with the textural detailing expected from HARTMANN&FORBES, offers a globally-infused collection of natural handcrafted window and wallcoverings.





LEMS71-06 Ivory



LEMS71-09 Limestone



LEMS71-72 Ruby



LEMS71-57 Lapis

## GRASSWEAVE [WTS]

# CITY STITCH

This handwoven design is a modern interpretation based on ancient Japanese Sashiko stitching from the Edo period. A unique weave that combines functional embroidery with meticulous, decorative stitching to create a sophisticated mix of texture, color and pattern.

*features a 2" plain woven border*



LEMS71-54 Malachite

## WALLCOVERING

# KAMAKURA

Merging geometric shapes with Japanese imagery, this complex composition depicts beauty and serenity in a thoughtful, artistic way. In transposing the stenciled design to a textured grasscloth, Smith has created a layered backdrop that can coordinate seamlessly with both modern and traditional interiors.



WLMS75-42 Bronze



WLMS75-54 Malachite



WLMS75-57 Lapis



WLMS75-72 Ruby

**Window** Price Group: 7 | Max Width: 180"  
Available Styles: Roman, Drapery, Top Treatment

**Wall** Width: 36" (91.4cm) | Length: 8yds (7.3m)

Shown: LEMS71-54 City Stitch – Malachite, Traditional Style Roman  
WLMS75-54 Kamakura – Malachite, Wallcovering











## GRASSWEAVE [WTS]

# CASCADE

An elegant and sophisticated use of the traditional striation pattern, employing soft colors of handwoven threads. The vertical stitch pattern is asymmetrical and highlighted by subtle but glamorous metallic strands.



LEMS70-12 Ivory



LEMS70-55 Malachite



LEMS70-51 Limestone

## WALLCOVERING

# MAJORELLE

Inspired by the famous French artist Jacques Majorelle and his world-renowned garden and home in Marrakesh, Morocco, this sublime wallcovering features graphic arrangements reminiscent of architectural lattice screens found in palaces and temples from Morocco to the Middle East.



WLMS73-06 Sandstone



WLMS73-32 Celadon

**Window** Price Group: 7 | Max Width: 180"  
Available Styles: Roman, Roller, Drapery, Top Treatment

**Wall** Width: 36" (91.4cm) | Length: 8yds (7.3m)

Shown: LEMS70-12 Cascade – Ivory, Old Style Roman  
WLMS73-06 Majorelle – Sandstone, Wallcovering





CWMS81 Hinoki

#### COLOURWEAVE [TTS]

## JUNSEI

Inspired by traditional Japanese screens, this refined weave is handwoven with thinly sliced bamboo, allowing the sunlight to gently filter in.



CWMS80 Matsu



CWMS82 Tochi



WLMS74-51 Amber

#### WALLCOVERING

## JAPÓN GARDEN

An enduring, woven wallcovering imbued with rich, bold patterns that evoke flora in unusual and unexpected ways. Inspired by antique, hand-carved abaca stencils, these designs bring depth and interest to any room. Hand-mixed, saturated pigments are printed over a neutral background to create a warm, artistic and inviting effect.



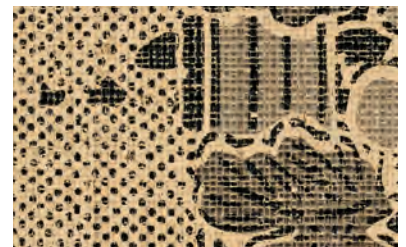
WLMS74-57 Red/Blue



WLMS74-30 Verde



WLMS74-18 Stone



WLMS74-12 Mist

**Window** Price Group: 4 | Max Width: 94"  
Available Styles: Roman, Roller, Top Treatment

**Wall** Width: 36" (91.4cm) | Length: 8yds (7.3m)

Shown: CWMS80 Junsei – Matsu, Sudare Style Roman  
WLMS74-51 Japón Garden – Amber, Wallcovering











WALLCOVERING

## AGRA LATTICE

Inspired by beautiful, hand-turned spindle designs used throughout Indian architecture for generations, Agra Lattice depicts a maze-like, hand-stenciled pattern with abstracts that play upon form, texture and movement.

Smith has adapted the traditional spindle motif and has reinterpreted it into a rhythmic arrangement on rich, woven wallcovering that is as meditative as it is vibrant.



WLMS72-27 Sandstone



WLMS72-51 Limestone



WLMS72-57 Azul



Width: 36" (91.4cm) | Length: 8yds (7.3m)

Shown: WLMS72-57 Agra Lattice – Azul, Wallcovering

888.582.8780 | HARTMANNFORBES.COM