



HARTMANN & FORBES®

WINDOWCOVERINGS, WALLCOVERINGS AND TEXTILES
— HANDCRAFTED OF SUSTAINABLE NATURAL MATERIALS —

FOR IMMEDIATE RELEASE

Press Inquiries:
Stephanie Somogyi
stephanie@spreadpr.net or 212.696.0006

HARTMANN&FORBES Introduces New In-House Designs for Fall 2021

AUGUST 2021 (TUALATIN, OREGON) - Hartmann&Forbes, maker of sustainable natural window and wall coverings announces new in-house designs for Fall 2021. A passion for handweaving, design exploration and a love of nature continues to fuel the evolution and growth of their H&F Studio Collections.

WOVEN-TO-SIZE PAPYRUSWEAVE WINDOWCOVERING

Unity

Loomed of gently twisted strands of papyrus, Unity's sumptuously soft texture is balanced by a double warp that delivers definition to the relaxed weave. The series features a diaphanous design that allows light to pass through, its airy look and peaceful color palette lending a Zen sensibility.

NATURAL WALLCOVERING

Beachfront

At once relaxed and refined, Beachfront captures its namesake coastal feel. Artisan-loomed of textural raffia, its hand-painted fibers reveal variable brushstrokes for a laidback look. The colored warp combined with whitewashed weft fibers in an open weave, creating a dimensional, sun-dappled appearance that recalls casual beach mats.

TAILORED-TO-SIZE GRASSWEAVE WINDOWCOVERING UPDATE

Linen

Crisp, minimal and delightfully modern, this series has the natural approachability of linen fabric. Offered in a full color palette to compliment a wide range of interior color schemes. Adding one colorway for a total of six in the Series.

TAILORED-TO-SIZE PAPYRUSWEAVE WINDOWCOVERING UPDATE

Zen

Zen philosophy suggests uncluttered simplicity will stimulate tranquility. The Zen series adorns this philosophy with its refinement. Adding three colorways for a total of six in the Series.

FOR IMMEDIATE RELEASE

Press Inquiries:
Stephanie Somogyi
stephanie@spreadpr.net or 212.696.0006

HARTMANN&FORBES Introduces New In-House Designs for Fall 2021

Woolen Mill

The value of woven wool blankets dates back to the earliest expeditions across the American West. Inspired by this legacy, the Woolen Mill series offers a superior balance of rustic textures and natural colors. Adding one colorway for a total of six in the series.

WOVEN-TO-SIZE PAPYRUSWEAVE WINDOWCOVERING



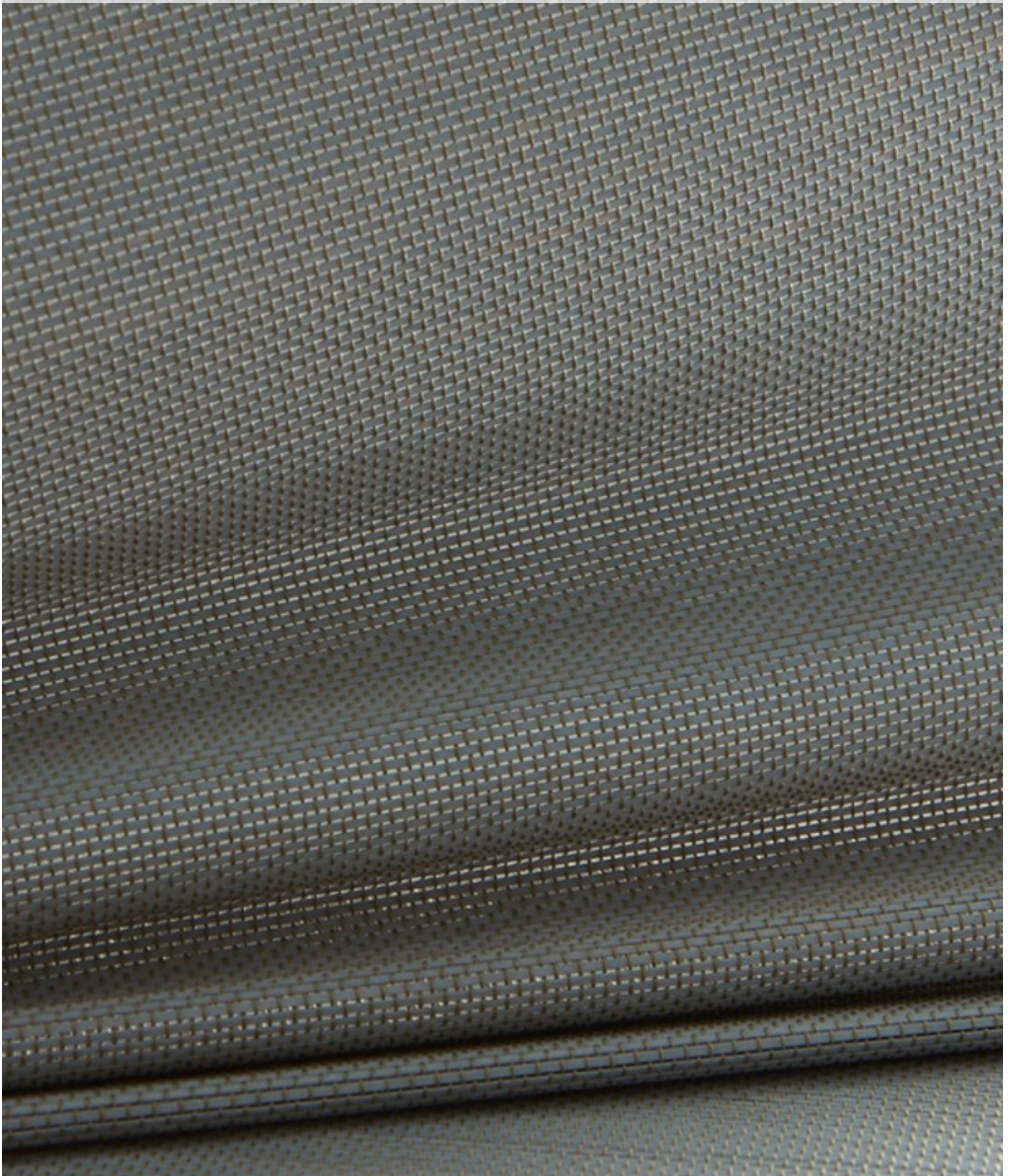
UNITY – COMMON GROUND, PEACEFUL DOVE AND GRACIOUS GREY

NATURAL WALLCOVERING



BEACHFRONT – NEWPORT, BANDON, AND SEASIDE

TAILORED-TO-SIZE GRASSWEAVE WINDOWCOVERING



LINEN – MORNING LINEN

TAILORED-TO-SIZE PAPYRUSWEAVE WINDOWCOVERING



ZEN – ROCK GARDEN, STONE TEMPLE, AND RAKE SAND

TAILORED-TO-SIZE PAPYRUSWEAVE WINDOWCOVERING



In-House Designs: Fall 2021

Series Name	NEW Colorways	Type	Width	Content
Unity	3	Windowcovering	150"	Pulp Fiber
Beachfront	3	Wallcovering	43"	Raffia
Linen	1	Windowcovering	96"	Bamboo
Zen	3	Windowcovering	72"	Cellulose/Poly
Woolen Mill	1	Windowcovering	72"	Cellulose/Cotton/Poly

All press inquiries, please contact:
Stephanie Somogyi at stephanie@spreadpr.net or 212.696.0006

HARTMANN&FORBES®

NATURAL WINDOWCOVERINGS, WALLCOVERINGS & TEXTILES



MEET MICHAEL JONES

FOUNDER & CHIEF CREATIVE OFFICER

Hartmann&Forbes, established in 1998, is the passion of its founder Michael Jones. As a former international trade merchant, Michael frequently traveled abroad. On a business trip to Southeast Asia early in his career, he was captivated by watching artisans as they practiced the traditional art of handweaving. He remembers being mesmerized as craftsmen harvested organic plants and delicately hand-tied them into natural weft fibers. Using age-old techniques, they transformed these fibers into exquisitely handmade textiles.

Michael realized not only his admiration for the ancient art form, but also that this small cottage industry represented an opportunity to build a sustainable business that could serve the luxury design marketplace, while at the same time, perpetuate the craft for future generations. As Michael has stated, "I don't want to change the world as many do, I merely want to preserve it by advancing the art of handweaving so the next generations can enjoy its beauty."

For over the last 20 years, Michael has pursued this passion by developing sustainable farming, weaving and production facilities, while expanding an international network of luxury to-the-trade showrooms, establishing Hartmann&Forbes as a leader in the boutique high-end home furnishings industry. He has fostered a corporate culture that encourages experimentation, design innovation and a progressive atmosphere that has landed the company on the Top 100 Best Green Companies to Work for in Oregon each year for nearly a decade.

Jones' commitment to forward-thinking leadership and superior design has landed Hartmann&Forbes in several leading business, home, design and trade publications. The company has been featured in Entrepreneur, Fast Company, CNBC, The Wall Street Journal, Traditional Home, Luxe Interiors + Design, Architectural Digest, Milieu and Interior Design, among many others. Hartmann&Forbes made the Inc. 500 list of the Fastest Growing Companies and was the 24th Fastest Growing Company in Oregon. As a leader and entrepreneur, Jones was named one of Oregon Business Journal's 40 under 40.

A native of Portland Oregon, Michael holds a BA from the University of Portland and an MBA from the University of Oregon. Michael attests that while his love of design and entrepreneurship defines his career, his true life's passion is his wife, Nancy, and their three children.

All press inquiries, please contact:
Stephanie Somogyi at stephanie@spreadpr.net or 212.696.0006

HARTMANN&FORBES®

NATURAL WINDOWCOVERINGS, WALLCOVERINGS & TEXTILES



MEET REBECCA WELCH

DIRECTOR OF PRODUCT DEVELOPMENT

Rebecca Welch entered the world of interior design over 25 years ago by way of her experiences in the windowcovering industry, as a design studio business owner, and having an education in business, fashion merchandising and interior design.

Now as Director of Product Development for Hartmann&Forbes for the last 13 years, she has traveled the world to design and source products including natural weaves, wallcoverings and soft natural fabrics.

She appreciates the beauty that nature provides and is inspired by the artisans that create the company's unique products. She is always striving to stay ahead of the trends and find the newest way to mix our fibers and yarns.

Rebecca is also very involved in philanthropy having been a board member on seven foundations including Doernbecher Children's Hospital Foundation, Northwest Society of Interior Designers and the Museum of Man. She loves interior design and enjoys traveling and collecting art.

All press inquiries, please contact:
Stephanie Somogyi at stephanie@spreadpr.net or 212.696.0006