



Natural Wallcovering

INSTALLATION ADDENDUM

Please be advised, this addendum pertains to the wallcoverings listed below, and is meant to assist in tandem with our full installation instructions for natural, handcrafted wallcoverings located on page 3 of this document or at hartmannforbes.com/installation-instructions

VALE SERIES

WL431-18 Hidden Ridge

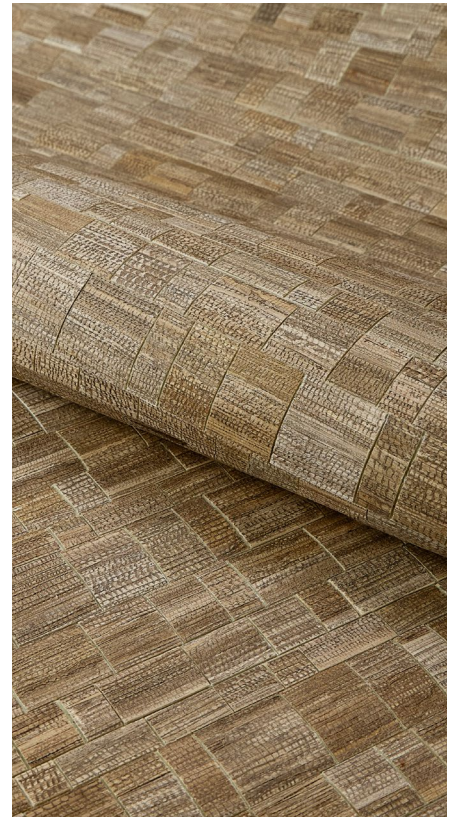
Please see separate instructions for Vale wallcovering WL431-12 & WL430-54

Hidden Ridge wallcovering is constructed from hand-cut, individually applied pieces of varying sizes. Due to this construction method, material integrity should be handled with care during unpacking and installation.

When removing the wallcovering from the packaging, inspect all panels for loose components. Minor displacement of individual pieces may occur during shipping or handling.

If a piece becomes detached, retain the material and reattach it using a clear-drying adhesive, ensuring proper alignment with the surrounding pattern. Apply firm, even pressure to secure adhesion.

Exercise care throughout installation to avoid unnecessary disturbance to the surface. This product's irregular composition is inherent to its design and should not be considered a defect.



If you have any questions before, during or after installation, please contact Customer Relations at 888.582.8780 or at hfc@hartmannforbes.com

HARTMANN&FORBES ASSUMES NO RESPONSIBILITY FOR THE INSTALLATION

HARTMANN&FORBES®

©2026 HARTMANN&FORBES INC.



Natural Wallcovering

INSTALLATION ADDENDUM

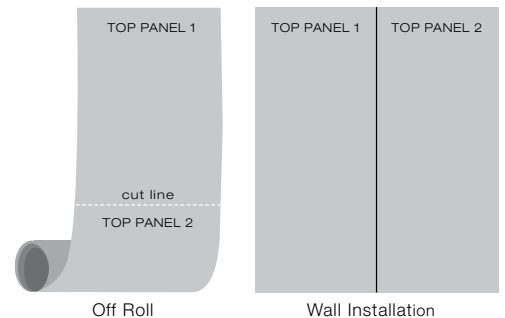
Please be advised, this addendum pertains to the wallcoverings listed below, and is meant to assist in tandem with our full installation instructions for natural, handcrafted wallcoverings located on page 3 of this document or at hartmannforbes.com/installation-instructions

CHARACTERISTICS OF SPECIALTY WALLCOVERING

- This wallcovering is hand-finished with hand placed natural materials. There will be irregularities in the finished product.
- The thickness is inconsistent and will not line up horizontally or vertically.
- Due to the thickness of this paper, please use an appropriate wallcovering cutting blade.
- No side-match.
- Due to the unique materials and craftsmanship of this specialty paper, be sure to remove from box at least two days prior to installation. Wallcovering should not remain in shipping box more than two weeks.

INSTALLATION INSTRUCTIONS

- Hang wallcovering as it comes off the roll — do not reverse hang (*see illustration at right*).
- Make a note on each strip to indicate the TOP. Stay consistent in aligning pieces with the TOP as the header.
- After wallcovering is installed, loose hand placed materials may need to be glued down.
- To press down seams, use a soft bristle brush, i.e. horsehair brush. Seam roller not recommended, as it may damage wallcovering.



If you have any questions before, during or after installation, please contact Customer Relations at 888.582.8780 or at hfcr@hartmannforbes.com

HARTMANN&FORBES ASSUMES NO RESPONSIBILITY FOR THE INSTALLATION

HARTMANN&FORBES®

©2026 HARTMANN&FORBES INC.



Natural Wallcovering

INSTALLATION INSTRUCTIONS

Thank you for ordering Hartmann&Forbes Natural Wallcoverings. Please read the following instructions carefully before cutting or installing these wallcoverings. For best results, we recommend using a professional wallcovering installation expert.

INHERENT NATURAL VARIATIONS

- Hartmann&Forbes designs with best-in-class sustainable natural fibers. Each design is as individual and unique as the natural fibers from which it's made. Because of this, there are often slight irregularities.
- Fiber variances are inherent in natural wallcoverings and are not considered defects.
- Many of our wallcoverings are handcrafted from natural materials and finished with color washes. These materials are fragile. Exercise care in handling to avoid damage.
- Seams may be obvious upon installation; this panel effect is inherent with natural wallcoverings. Subtle shading differences between strips tend to soften over time.

BEFORE INSTALLATION

- If working around a light switch, turn off electricity.
- Store wallcovering in occupied temperature and humidity levels for three (3) days prior to installation to allow materials to acclimate.
- Inspect wallcoverings carefully, confirming that you have the correct weave, yardage and that all dye lots flow well together. When inspecting your cuts, do not actually cut the strips.
- Each wallcovering roll should be inspected for defects prior to installation.

TEST INSTALLATION

- Install three (3) strips and inspect again. If a defect is evident at this point, stop installation and contact Customer Relations for instructions on how to proceed. **No claims will be allowed for more than three (3) installed strips** and all claims must be made within 60 days of the shipping date.

WALL PREPARATION

- The building structure must be watertight and remain at occupied temperature and humidity levels for three (3) days prior, throughout and three (3) days following installation.
- Sand off any bumps to achieve the smoothest possible finish.
- Clean walls of dirt, soap, grease, loose or flaking paint, existing wallcoverings or like materials before hanging.
- We recommend preparing walls with good quality wallcovering primer that has been carefully and correctly applied. Primers must be completely dry prior to hanging wallcoverings.

INSTALLATION PART I – ADHESIVES

1. We recommend using a clear, pre-mixed, non-staining adhesive. Be sure to read the adhesive's label prior to use.
2. Do not add excessive water to the paste as it may cause the paper backing to pull away from the face of the wallcovering.
3. Apply the paste evenly to the back of the wallcovering, taking care not to get adhesive on face of wallcovering. Allow wallcovering paste to become tacky prior to hanging (timing will vary depending on the temperature and humidity of the room). Do not use a pasting machine.
4. Install wallcoverings one strip at a time. Reversing strips of grass patterns may help even the shading. However, we leave it up to the installer's discretion. With all wallcoverings, we suggest laying out the strips prior to hanging to determine the most even shading.

INSTALLATION PART II

PRETRIMMED WALLCOVERING

1. A finer seam may be achieved by double cutting the wallcovering during installation.
2. Trim edges with an extremely sharp razor blade; we suggest changing your blade often.

UNTRIMMED WALLCOVERING

1. This wallcovering comes with a selvage edge that will need to be pre-trimmed and will require cutting a precise edge on your work table. Trimmed width is 36" wide.
2. Trim edges while paper is dry.
3. Trim edges with a sharp razor blade; we suggest changing your blade often.

INSTALLATION PART III – SUGGESTIONS

1. Avoid damaging the face of the wallcovering by using a soft brush or cloth to hang the material. Never rub face of the product with a stiff brush or attempt to use a seam roller.
2. Do not allow paste or excessive water to come in contact with the front of the wallcovering. Both paste and excessive water will stain and/or change the color of the natural materials on the face of the wallcovering.
3. If wallcovering needs to be cleaned, gently vacuum using a dusting brush attachment.

If you have any questions before, during or after installation, please contact Customer Relations at 888.582.8780 or at hfc@hartmannforbes.com

HARTMANN&FORBES ASSUMES NO RESPONSIBILITY FOR THE INSTALLATION

HARTMANN&FORBES®

©2025 HARTMANN&FORBES INC. INWALLADD325