



Natural Wallcovering

INSTALLATION ADDENDUM – NEPTUNIA

Please be advised, this addendum pertains to the wallcoverings listed below, and is meant to assist in tandem with our full installation instructions for natural, handcrafted wallcoverings located at hartmannforbes.com/install

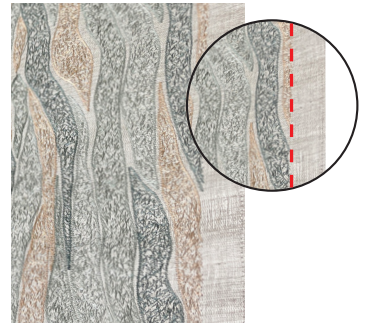
NEPTUNIA SERIES: WLLK540-09 Prasino, WLLK540-55 Galano

CHARACTERISTICS OF SPECIALTY WALLCOVERING

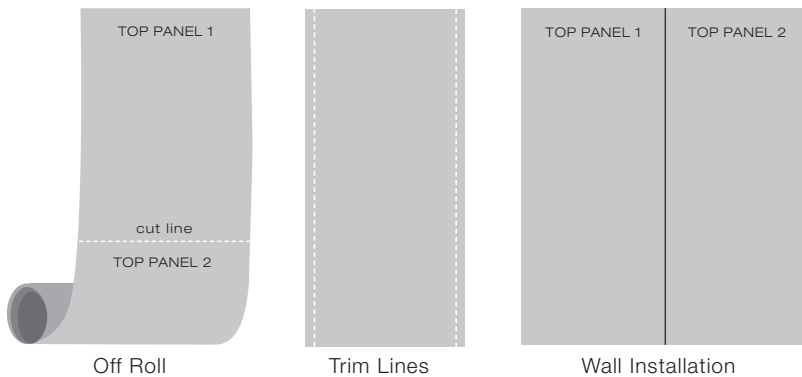
- These wallcoverings are handwoven and hand-finished
- There will be irregularities in the weave and the finish

INSTALLATION INSTRUCTIONS

1. Wallcovering is 36" wide and untrimmed. Cut along a precise trim line using a straight edge with a very sharp blade. Remember to change blades frequently for the best results.
2. After marking your level line, use the dry glue method and apply wallpaper paste or adhesive directly to the wall, one panel area at a time. Wallpaper adhesive can dry quickly, so only apply it to the area you are actively working on. Avoid using thinned adhesive, as it may seep through the embroidery and cause stains. Use a roller for even coverage and a brush for corners.
3. Hang the panel and press it against the wall with your hands to remove any air bubbles. Then, use a rubber float to press the wallpaper firmly against the wall without shifting it too much, which can cause tearing or misalignment with the next piece.
4. Brushing gently, use a soft smoothing brush over the wallpaper to even out the surface.



Untrimmed



If you have any questions before, during or after installation, please contact Customer Relations at 888.582.8780 or at hfcf@hartmannforbes.com

HARTMANN&FORBES ASSUMES NO RESPONSIBILITY FOR THE INSTALLATION

HARTMANN&FORBES®