

AMY MEIER
BY
HARTMANN & FORBES®

DESIGNER COLLABORATION





AMY MEIER

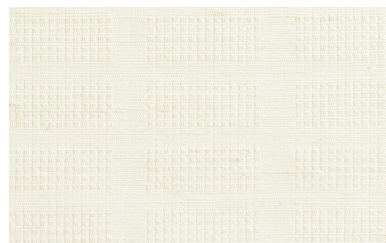
Amy Meier, founder and principal designer of Rancho Santa Fe-based Amy Meier Design and Amy Meier, a specialty boutique, is renowned for an aesthetic that seamlessly blends tradition and innovation. Her projects have been published in such magazines as House Beautiful, Veranda, and ELLE DECOR, and she was named a Traditional Home Rising Star in 2017 and one of Veranda's Next Legends for 2022. Her new collection by Hartmann&Forbes deftly fuses inspiration from Japanese design, the Bauhaus School, and traditional Korean cloth.



GRASSWEAVE [WTS]

STIPPLE

Informed by the crisp geometry of the Bauhaus, while capturing the quiet restraint of Japanese design, Stipple is distinguished by its soothing subtlety. Against a ground of refined ramie, a series of small, woven squares produce intriguing nuances in texture and dimension, its neutral palette lending it tonal beauty.



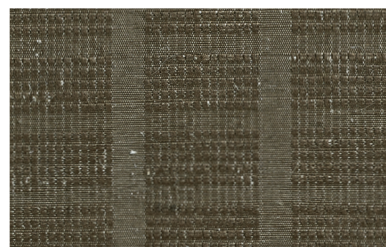
LEAM36-03 Alabaster



LEAM36-06 Opaline



LEAM36-09 Haze



LEAM36-42 Chestnut

Window Price Group: 7 | Max Width: 100"
Available Styles: Roman, Top Treatment

Shown: LEAM36-03 Stipple – Alabaster, Old Style

GRASSWEAVE [WTS]

JOINERY

Paying homage to Bauhaus textile designer Anni Albers, this weave balances the structure of industry with a natural, organic sensibility. Rectangles and squares jacquard-handloomed of textural ramie and multicolored warp fibers form a complex geometry that conjures images of newsprint on a page.



LEAM34-09 Newsprint

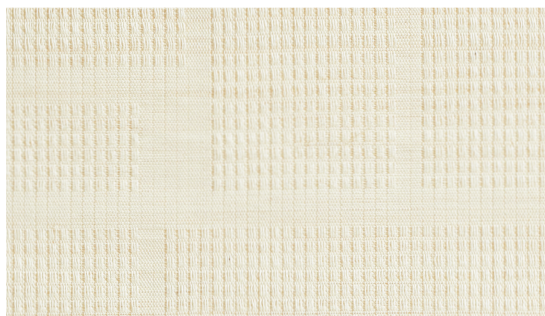




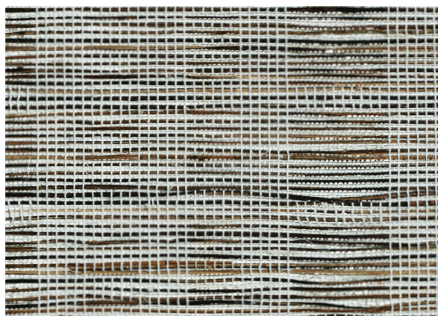
GRASSWEAVE [WTS]

FRAMEWORK

The large repeating windowpane motif is inspired by the chogak bo or patchwork style of Korean Bojagi. Masterfully jacquard-hand-loomed of banana fiber, the textural geometry brings dimension and differing opacities to the quiet, monochromatic composition.



LEAM37-03 Alabaster



LEAM33-66 Tortoise

GRASSWEAVE [WTS]

STITCH

Stitch balances the linear architecture of the Bauhaus with the soft, natural appeal of Japanese designs. Multicolored abaca is freely hand-placed through an orderly framework of jacquard-handloomed ramie, creating a compelling play of tension and texture and a subtle sense of movement.

GRASSWEAVE [WTS]

FRET

Inspired by the lustrous look of natural horsehair, Fret features an earthy, variegated palette of banana fiber handwoven with black warp thread.

The understated design, with its refined texture and iridescent beauty, feels both timeless and current.



LEAM35-87 Alloy





GRASSWEAVE [WTS]

GOSSAMER

Bojagi, a traditional Korean silk patchwork that becomes more beautiful and translucent with age, served as the inspiration for this tonal series. Alternating tight and loose weaves, rendered in ramie and warp threads, produce a beautifully irregular striped pattern, and its natural drape and rich texture highlights Gossamer's handwoven quality and the Japanese aesthetic of wabi-sabi.



LEAM31-03 Strie Chalk



LEAM32-03 Hatch Chalk







LEAM30-03 Parchment

GRASSWEAVE [WTS]

DAPPLE

True to its namesake, Dapple evokes the dreamy look of sunlight peeking through leaves on a tree. The gauzy ground of handwoven ramie plays host to a freeform grid of ramie slubs. The raised, textural design softly filters the light and lends relaxed refinement to an interior.