

HARTMANN & FORBES

SOFT NATURAL FABRIC





SOFT NATURAL FABRIC

RELAXED AND EARTHY BELGIUM LINENS

A fresh translation of textural classics, our Soft Natural Fabric collection offers hints of the exotic while remaining grounded in the modern moment. Loomed in some of the world's oldest and most revered textile mills, fibers are carefully spun and dyed to a rich and earthy color palette.

ERTHEWEAVE



NEW

HONEYCOMB

Handwoven with the slow cadence of the loom, Honeycomb echoes the quiet geometry of nature's design. Linen and cotton slub yarns interlace with subtle variation, creating a dimensional weave that softens light into a warm, textural glow.



EW400-06 Almond



EW400-12 Clove

Price Group: 4 | Max Width: 120"
Available Styles: Roman, Top Treatment

Shown: EW400-06 Honeycomb – Almond, Traditional Style Roman

888.582.8780 | HARTMANNFORBES.COM

NEW
STRIA

Named for the fine streaks found in stone and wood, Stria traces subtle lines of light across a sheer linen ground. Smooth specialty yarns drift through the weave at unexpected intervals, creating an airy textile with depth, where every variation tells a story shaped by the loom. MASTERS OF LINEN CERTIFIED.



EW153-03 Moonlit



EW153-24 Sunlit





NEW

PARTERRE

Inspired by the measured order of a parterre garden, this design rests on a base of pure linen where embroidery moves in harmonious flow, creating lines both architectural and organic. Light drifts across the raised threads, casting delicate shadows that enrich the natural fabric's composed, dimensional beauty.



EW154-36 Grove



EW154-27 Birch



Price Group: 3 | Max Seamless Width: 50"
Available Styles: Roman, Top Treatment

Shown: EW154-27 Parterre - Birch, Old Style Roman

888.582.8780 | HARTMANNFORBES.COM

NEW
LISCIO



Liscio captures the quiet poetry of natural textures in soft, timeless hues. Woven in Italy from a serene blend of linen and hemp, its smooth hand and grounded weight diffuse light into a tranquil glow, bringing an atmosphere of understated elegance and calm.



EW159-06 Naturale



EW159-27 Corda



EW159-12 Lino



EW159-36 Ostrica





BARGELLO

Named for the timeless needlepoint style that inspired it, Bargello exudes a kinetic quality and earthy elegance. Featuring a stepped, zigzag design of soft, premium linen, the stitches sweep across tonal layers for an artfully shaded effect that lends the look of flames shifting in the wind.



EW152-32 Menta



EW152-03 Perla



EW152-15 Grigio



EW152-12 Cachi

RIBBED

With a raised pinstripe pattern, this sheer linen brings casual chic to an interior. The multi-color thread detail offers a dynamic and differentiated look.



EW105-06 Buff



EW105-60 Denim

Price Group: 4 | Max Seamless Width: 114"
Available Styles: Roman, Top Treatment

Shown: EW152-15 Bargello – Grigio, Old Style Roman
WL426-12 Aleutian – Alpenglow, Wallcovering



SAHARA

Resembling windblown desert sands, this luxury linen exhibits a delicate rippling of soft color favoring the natural beauty of the desert. (shown railroaded)



EW150-03 Salt



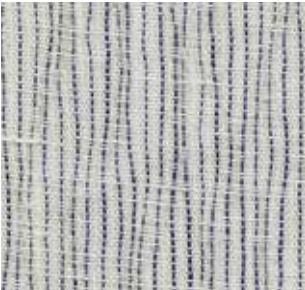
EW150-06 Dune



EW150-09 Sandwash



EW150-12 Plateau



EW150-57 Oasis



EW150-72 Sundown

Price Group: 4 | Max Seamless Width: 114"
Available Styles: Roman, Top Treatment

Shown: EW150-12 Sahara – Plateau, Old Style Roman
WL424-03 Baja – White Sands, Wallcovering



BRUSHED

A soft textured sheer linen milled in the Belgium countryside. Offered in a palette of neutrals to work harmoniously in the home and to coordinate with our natural woven shades.



EW151-03 Amaryllis



EW151-06 Lily



EW151-09 Foxtail



EW151-15 Silverdust



EW151-27 Millet



EW151-36 Thistle



EW151-39 Seaholly



EW151-45 Allspice



EW151-87 Hollyhock

Price Group: 3 | Max Seamless Width: 114"
Available Styles: Roman, Top Treatment



FIELDS

A perfect expression of harmony in design. This linen beautifully blends two distinct textures into one evocative pattern. Gentle earth tones and visual texture from vertical warp fibers evoke images of undulating flax fields at harvest.



EW148-06 Loam



EW148-12 Earthen



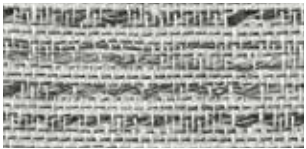
EW148-39 Root



EW148-51 Bloom



EW148-57 Petal



EW148-84 Peat



WEATHERED

The natural stone-washed palette of this soft, medium-weight linen delivers an easygoing attitude embodying a lived-in, carefree lifestyle.



EW104-12 Limestone



EW104-18 Sandstone



EW104-32 Moonstone



EW104-30 Greenstone



EW104-57 Bluestone



EW104-60 Graystone



EW145s Sao' Luis



EW145m Marcelo

PLAID

A traditional windowpane check pattern is masterfully adapted in a striking linen weave. A heavy, coarse thread woven in the weft, gives this fabric tactile interest and contemporary character.

Price Group: 4 | Max Seamless Width: 50"
Available Styles: Roman, Top Treatment

SHEER STRIPE

An open-weave striping adds visual interest in this sophisticated sheer linen. Offered in a contemporary neutral palette with tonal heathering.



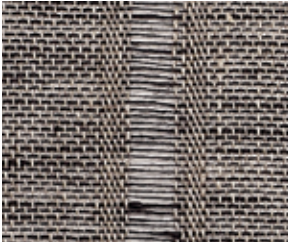
EW144b Balem



EW144o Ounda



EW144n Natal



EW144r Recliffe



Price Group: 3 | Max Seamless Width: 50"
Available Styles: Roman, Top Treatment

Shown: EW144n Sheer Stripe – Natal, By-the-Yard
LE1284 Illumination – Bishan, Old Style Roman

MIRAGE

Heat reflecting from the barren desert floor delivers playful light refraction. The organic pattern of the Mirage Series captures this seemingly random effect.



Table courtesy – O'Hara Studio



EW149-03 Glint



EW149-09 Glow



EW149-12 Luminous



EW149-30 Echo



EW149-36 Illusion



EW149-79 Phantom

Price Group: 4 | Max Seamless Width: 114"
Available Styles: Roman, Top Treatment

Shown: EW149-30 Mirage – Echo, By-the-Yard
LE3130 Essence – Bisque, Rollerfold Style
WL424-12 Baja – Desert Sands, Wallcovering

CORDS

Elegance with a rustic twist, this design features tufted cords artistically embroidered onto a heavy linen ground. As wearable as fashion, this contemporary textile will dress any window in chic style.



EW109-15 Canvas



EW109-06 Cotton



EW109-12 Burlap



EW109-21 Cloth



EW109-54 Knapsack



Furnishings courtesy - Tiffany Home Design | Rug courtesy - Tufenkian Artisan Carpets



Soft Natural Fabric
Ertheweave

ARBORETUM

With an elegant, vintage feel, this sheer design layers a charming abstract leaf motif on a warm cream backdrop.



EW108-21 Bask

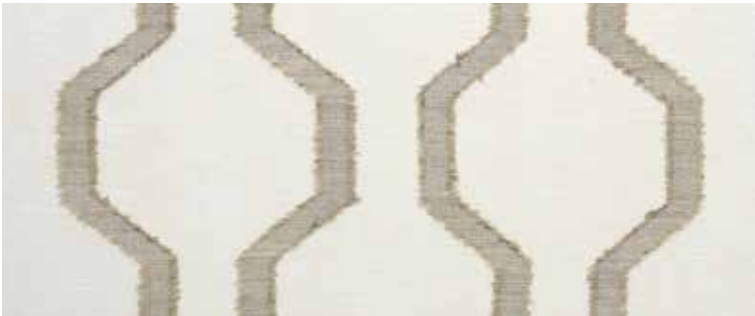


EW108-60 Shade

Price Group: 5 | Max Seamless Width: 114"
Available Styles: Roman, Top Treatment

STRIE

An inspired melange of linen threads are loomed into an elegant heathered weave. This sheer linen has a chic quality that elevates the style of a room.



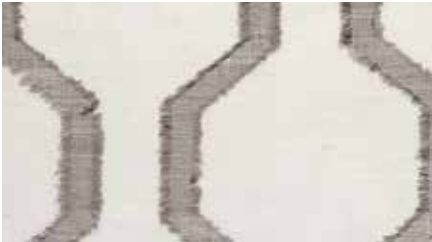
EW259 Contorno

GEOMETRY

A breezy lightweight linen that captures a modern geometric vibe. Offered in misty neutrals and blue, this hypnotic pattern of abstract ogees comes together to make a big impact.



EW257 Angulo



EW256 Praca



EW258 Moldar



EW147 Lagoa
Max Seamless Width: 55"

PG4



EW141a Andari
Max Seamless Width: 50"

PG3



EW141t Tijura
Max Seamless Width: 50"

PG3