

HARTMANN & FORBES

SPRING | SUMMER 2025

BARBARA BARRY
AMY MEIER
H&F STUDIO



“True design
transcends the aesthetic,
embracing the power to inspire,
transform, and elevate the
human experience.”

At Hartmann&Forbes, we believe design is most powerful when it speaks to the breadth of human experience. This season, we proudly present a collection that reflects the expansive artistry and perspectives of our collaborators.

Barbara Barry, a plein-air painter, brings her watercolor-inspired approach, creating designs that evoke serenity through light, texture, and natural beauty. Amy Meier, inspired by Scandinavian summer, offers fresh interpretations that blend warmth and modern craftsmanship. Together, these collections embody our commitment to creating more than a single aesthetic—they represent an endless spectrum of possibilities, designed to inspire and elevate.

By working with visionary designers, we create offerings that celebrate artistry, individuality, and the transformative power of natural design. This season, we invite you to explore a collection that metamorphoses space into sanctuaries of beauty and intention.

Yours In Nature,
~ Michael Jones
Founder

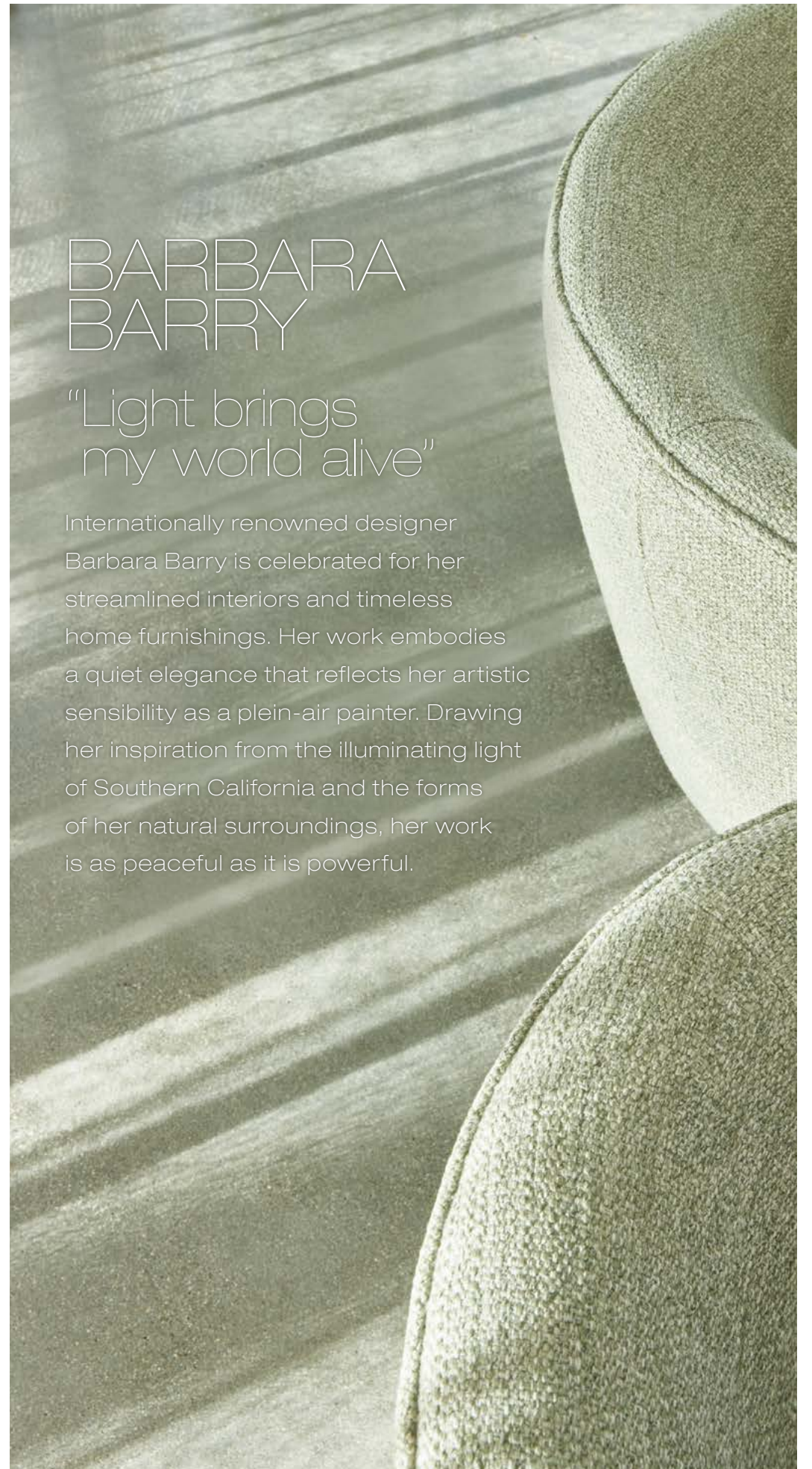




BARBARA BARRY

“Light brings
my world alive”

Internationally renowned designer Barbara Barry is celebrated for her streamlined interiors and timeless home furnishings. Her work embodies a quiet elegance that reflects her artistic sensibility as a plein-air painter. Drawing her inspiration from the illuminating light of Southern California and the forms of her natural surroundings, her work is as peaceful as it is powerful.





LIGHT

Inspired by simple beauty and subtle color that comes from quiet observation of light, of form, and of texture.

Painterly-patterned wall coverings glimmer and glint and pair seamlessly with woven window shades that let in just the right amount of light transforming spaces into elegant realms.

CIRRUS+ AQUARELLE

artful TEXTURES

Woven-to-Size Grassweave
OLD STYLE ROMAN SHADE
LEBB68-30 Cirrus - Citrine

Natural Wallcovering
WLBB61-30 Aquarelle - Citrine

CIRRUS WINDOWCOVERING



LEBB68-03 Cloud



LEBB68-30 Citrine



LEBB68-32 Cumulus

AQUARELLE WALLCOVERING



WLBB61-30 Citrine



WLBB61-32 Aqua Mist

HANDWOVEN FROM NATURAL RAMIE, Cirrus' twisting, ladder-like warp thread creates a bouclé texture that adds a touch of sheen to the windowcovering. In harmony, Aquarelle brings the artistic touch of Barbara Barry's original watercolor, printed on handwoven paper with a subtle metallic background that shimmers as it catches the light.

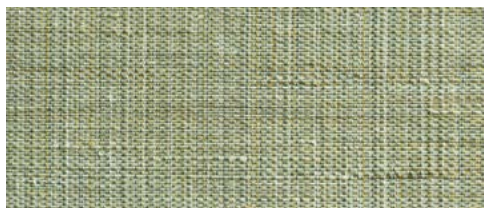
REPOSE

textural TRANQUILITY

HANDWOVEN IN A CROSSHATCH PATTERN of natural fibers, Repose is a beautiful, textural windowcovering with a natural dimension. The two colorways — Spring Rain and Raffia — reference the sky and earth.



LEBB65-09 Raffia



LEBB65-32 Spring Rain



TRANSCENDENCE +AQUARELLE

serene IMPRESSIONS



STIPPLED DOTS REVOLVE across the handwoven paper in Transcendence, creating a calm and contemplative mood. Its subtle ribbed texture forms a delicate, dreamy impression. Paired with Aquarelle p9, this combination inspires mindful connection.



WLBB63-36 Silver Sage
 WLBB63-09 Topaz
 WLBB63-32 Blanc de Chine
 WLBB63-18 Tranquil

Natural Wallcovering
 WLBB63-32 Transcendence - Blanc de Chine
 WLBB61-32 Aquarelle - Aqua Mist

STRATUS REVEALS CHANNELS of twisted yarn in soft hues juxtaposed with dimensional bands of tonal color suspended in a weave of handwoven natural fibers, creating a linear architecture with textural rhythm. Handwoven from strips of paper and jute in a variegated pattern, Quietude lends a tonal palette with rich texture and a play of quiet dimension.

STRATUS WINDOWCOVERING



LEBB66-06 Twine



LEBB66-32 Vapor



LEBB66-33 Silver Lake

QUIETUDE WALLCOVERING



WLBB60-06 Bleached Bone



WLBB60-30 Citrine



WLBB60-32 Blanc de Chine



WLBB60-36 Dawn

STRATUS+ QUIETUDE

quiet ELEGANCE



Woven-to-Size Grassweave
OLD STYLE ROMAN SHADE
LEBB66-33 Stratus - Silver Lake
Natural Wallcovering
WLBB60-06 Quietude - Bleached Bone



Woven-to-Size Grassweave
 OLD STYLE ROMAN SHADE
 LEBB67-32 Retreat - Blanc de Chine
 Natural Wallcovering
 WLBB62-32 Utopia - Cast Glass

RETREAT +UTOPIA

light & REFLECTION

overlapping ovals printed on hand-placed cork over a layer of metallic that beautifully reflects the light. This generous and evocative pattern has an artful elegance that is classic and modern.

DELICATELY WOVEN BY HAND from ramie and lustrous banana fibers, Retreat has a hint of color and softly lets the light retreat. It is paired with Utopia, a mesmerizing pattern of

RETREAT WINDOWCOVERING



LEBB67-06 Bleached Bone



LEBB67-18 Tranquil

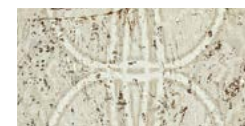


LEBB67-32 Blanc de Chine

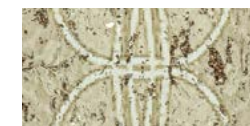


LEBB67-36 Silver Sage

UTOPIA WALLCOVERING



WLBB62-12 Pashmina



WLBB62-30 Citrine



WLBB62-32 Cast Glass



WLBB62-36 Silver Mist



CREATED AS AN HOMAGE TO SUMMER and Scandinavian design, Amy Meier's new wall and window coverings blend traditional techniques with innovative ideas. Drawing inspiration from the land of the midnight sun, the designs incorporate the pillars of their design ethos: a love of nature, simplicity, structure, and a comfortable ease of living.

AMY MEIER

scandinavian SUMMER



KLARA

checks & BALANCE

HANDWOVEN OF BAMBOO and thread, Klara is a contemporary reimagining of a classic check embodying effortless strength and grace. Intended to mimic wicker, the earthy wood tones contrasting the alabaster looped yarns create an intriguing interplay of tone and texture.



Woven-to-Size Grassweave
OLD STYLE ROMAN SHADE
LEAM532-06 Klara - Wheat Alabaster



TOVE + GRACE

elegant ELEMENTALS

HANDWOVEN OF RAMIE, Tove is a free-spirited and free-flowing weave designed to mimic the voluptuous curves of an Austrian shade. Inspired by the 1920s Swedish Grace movement, the tone-on-tone embroidered Grace wallcovering marries Scandinavian minimalism and neoclassical expressiveness with its dimensional geometric motifs and simple botanical forms.



Woven-to-Size Grassweave
OLD STYLE ROMAN SHADE
LEAM530-27 Tove - Wheat
Natural Wallcovering
WLAM534-06 Grace - Ivory





AGNES

refined MINIMALISM

LUMINOUS AND REFINED, Agnes' silky banana fibers are meticulously loomed by hand, creating a sheer that is the epitome of sophisticated minimalism.

LEAM533-06 Dawn



CECILIA

organic ELEGANCE

CECILIA'S TRANSLUCENT WEAVE exudes an ethereal quality, enhanced by a warm, grounding palette and dimensional striations. Masterfully handwoven from ramie, this design seamlessly blends refinement with raw, natural beauty.

LEAM531-27 Apricot





COLOURWEAVE
AMY MEIER COLLECTION

ALMA+MAJA

ALMA EVOKES the look of a sun-drenched summer beach reimagined in natural bamboo. Marked by its matchstick-style weft, this woven design combines cream and camel colors in a warm, nuanced weave that conjures a multitude of tiny grains of sand. Maja complements this warmth with a modern interpretation of woven wood marked by a rigorous, alternating striped motif and a soft pearl palette that shimmers in the light.

CWAM130-27 Alma - Sand
CWAM131-06 Maja - Pearl

H&F
STUDIO

PERFORMANCE
FABRIC

ECOWEAVE 104 | 204

translucent | blackout

INSPIRED BY THE TIMELESS LOOK of linen and crafted from man-made performance materials this design creates a versatile rollershade. Offered in neutral tones, the translucent ECO 104 beautifully filters the light, while ECO 204 delivers blackout coverage. They are free of harmful chemicals and feature Oeko-Tex Standard 100 certification.

EC104-06 Jasmine

EC104-12 Quinoa

EC104-27 Barley

EC104-36 Rye

EC204-06 Jasmine

EC204-12 Quinoa

EC204-27 Barley

EC204-36 Rye



Ecoweave
PERFORMANCE ROLLERSHADE
ECO 104-27 Barley

ECOWEAVE 105

natural PERFORMANCE

MARKED BY A TEXTURAL GRID-LIKE MOTIF, this jacquard-woven series evokes the look of natural fibers in man-made performance materials. The translucent windowcovering is free of harmful chemicals and Oeko-Tex Standard 100 Certified, gracefully diffusing the light in a range of muted colorways.

EC105-39 Taro

EC105-33 Leek

EC105-18 Cassava

EC105-09 Ginger

EC105-06 Parsnip

EC105-03 Jicama



Sanctuary, by nature.



PO Box 1149 | Tualatin, OR 97062 | hartmannforbes.com
t 503.692.9313 | 888.582.8780 | f 503.692.9315

©2025 HARTMANN&FORBES, INC

Barbara Barry Collection photography furniture
provided by Baker | McGuire and Verellen



Printed with zero VOC/
low energy and UV inks