

FEATURED IN



Publication: Luxe Interiors + Design | Southern California

Date: July/August 2025

Articles: Scene | p 46

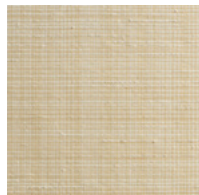
Product Shown:



LEAM532-06
Klara – Wheat Alabaster



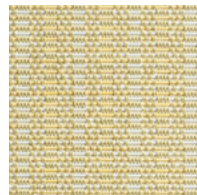
LEAM530-27
Tove – Wheat



LEAM531-27
Cecilia – Apricot



LEAM533-06
Agnes – Dawn



CWAM130-27
Alma – Sand



CWAM131-06
Maja – Pearl



WLAM534-06
Grace – Ivory

Order no-charge memos online at hartmannforbes.com
or contact your local representative showroom.

SCENE

WRITTEN BY MAILE PINGEL | PRODUCED BY CLÉMENCE SFADJ

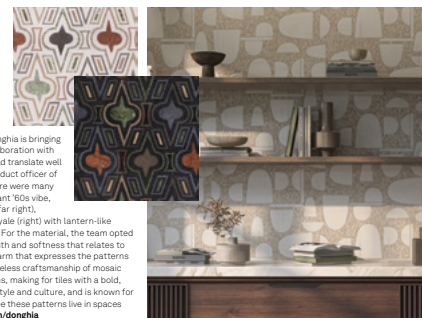
FAB COLLABS

FROM RICHLY PATTERNED TILES TO WOVEN SHADES AND WALLCOVERINGS, THESE POWERHOUSE COLLECTIONS ARE CATCHING OUR EYE.

Donghia x Artistic Tile

WRITTEN BY LAUREN GALLOW

Known for its Italian-inspired textiles and upholstery, Donghia is bringing its retro feel to new parts of the home in its latest collaboration with Artistic Tile. "We thought their patterns and designs would translate well to tile," explains Zachary Epstein, president and chief product officer of Artistic Tile. "Looking through the Donghia archives, there were many patterns that spoke to us." Drawn to those with an elegant '60s vibe, the team selected two heritage designs—Decadence (far right), a refined demilune, and Donghia's signature Casino Royale (right) with lantern-like shapes that have been oversized in this tile incarnation. For the material, the team opted for mosaic tile in natural stone. "The colors have a warmth and softness that relates to the original fabrics, and mosaic tile has an old-world charm that expresses the patterns in a way befitting of their heritage," Epstein says. The timeless craftsmanship of mosaic offers a striking contrast to these highly graphic patterns, making for tiles with a bold, stylish appeal. "Donghia inhabits a rich intersection of style and culture, and is known for its seductive glamour," Epstein adds. "We're excited to see these patterns live in spaces they never could as fabrics." artistictile.com; kravet.com/donghia



Amy Meier x Hartmann & Forbes

WRITTEN BY MAILE PINGEL

After exploring her interest in Japanese design in a prior collection for window and wallcoverings manufacturer Hartmann & Forbes, California designer Amy Meier has launched a new line with the textile company, this time inspired by Scandinavian style. "I've traveled to Sweden many times and always immediately feel at ease," she says. "There's a pared-back elegance there that creates calm but also warmth. That's what I was trying to achieve with this collection, to make people feel the way I do whenever I visit." Meier chose natural fibers like bamboo, ramie and banana for the six woven designs, all done in soft sunny shades with colorways like Wheat and Apricot. These are joined by a tone-on-tone



Ivory wallpaper inspired by the Swedish Grace movement of the 1920s and, more specifically, an inlay she spotted on a chest of drawers. The wallpaper, which hangs in Meier's own bedroom, is embroidered with geometric and botanical motifs that evoke a neoclassical feel. In fact, her abode features the whole of the new collection and hosted its photo shoot. "I really wanted to show how I imagined these pieces being used," the designer says. "And it's amazing to live with the line, because it's the manifestation of my imagination."

hartmannforbes.com; [@amymeierdesign](https://www.instagram.com/amymeierdesign)

DONGHIA X ARTISTIC TILE PATTERNS COURTESY ARTISTIC TILE
AMY MEIER X HARTMANN & FORBES PATTERNS COURTESY HARTMANN & FORBES