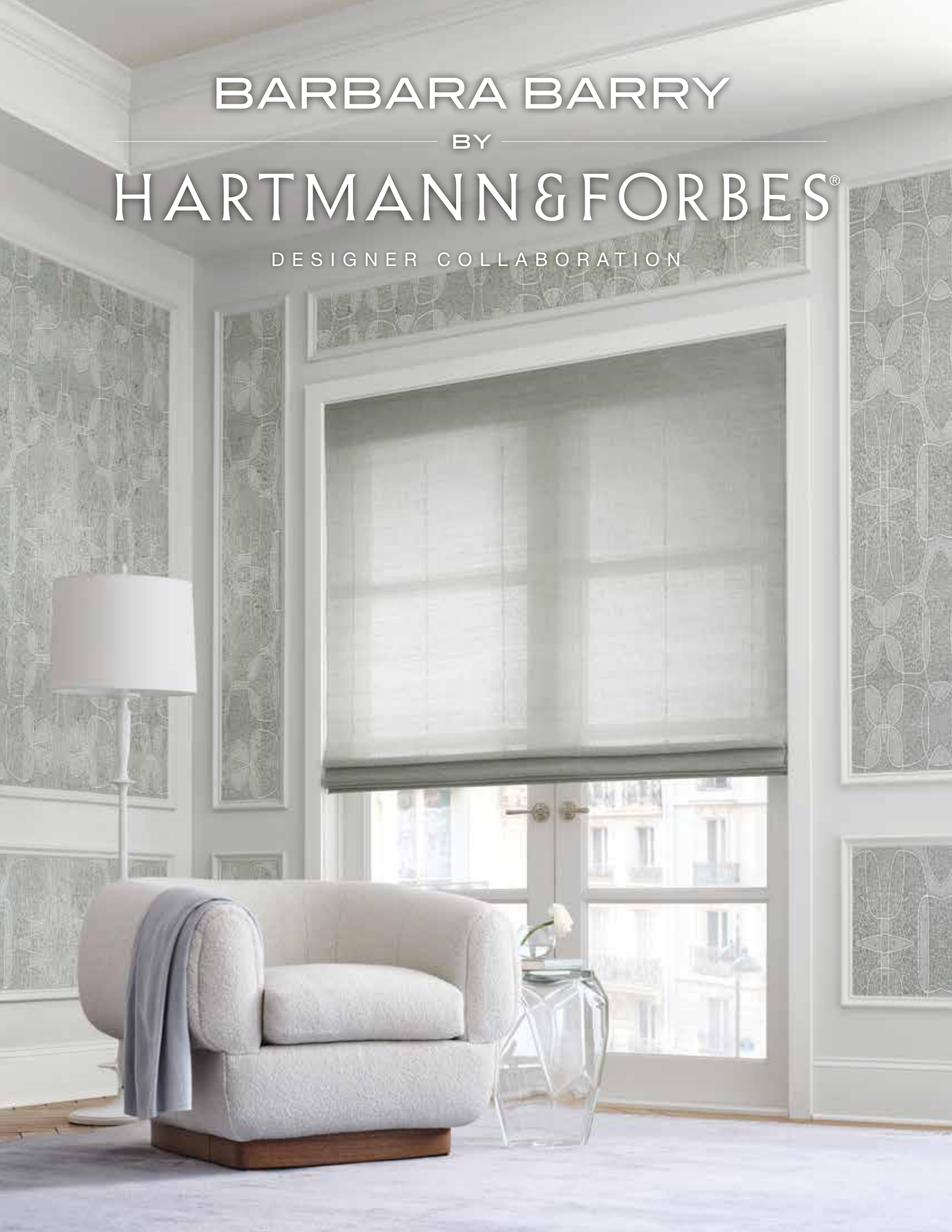


BARBARA BARRY

BY

HARTMANN & FORBES®

DESIGNER COLLABORATION





BARBARA BARRY

"I AM GUIDED BY THE SIMPLE BEAUTY
AND SUBTLE COLORS REVEALED
THROUGH QUIET OBSERVATION—
OF LIGHT, FORM, AND TEXTURE."

Internationally renowned designer Barbara Barry is celebrated for her streamlined interiors and timeless home furnishings. Her work embodies a quiet elegance that reflects her artistic sensibility as a plein-air painter. Drawing her inspiration from the illuminating light of Southern California and the forms of her natural surroundings, her work is as peaceful as it is powerful.



GRASSWEAVE [WTS]

CIRRUS

Handwoven from natural ramie, the weave's twisting, ladder-like warp thread creates a bouclé texture that adds a touch of sheen.



LEBB68-03 Cloud



LEBB68-30 Citrine



LEBB68-32 Cumulus



WALLCOVERING

AQUARELLE

Aquarelle comes right from the hand of Barbara Barry. Her original watercolor is printed on handwoven paper with a subtle metallic background that shimmers as it catches the light.



WLBB61-30 Citrine



WLBB61-32 Aqua Mist

Width: 37½" (95.25cm) | Length: 12 yds

Shown: LEBB68-30 Cirrus - Citrine, Old Style Roman
WLBB61-30 Aquarelle - Citrine, Wallcovering



GRASSWEAVE [WTS]

REPOSE

Handwoven in a crosshatch pattern of natural fibers, Repose is a beautiful, textural windowcovering with a natural dimension. The two colorways—Spring Rain and Raffia—reference the sky and earth.



LEBB65-09 Raffia

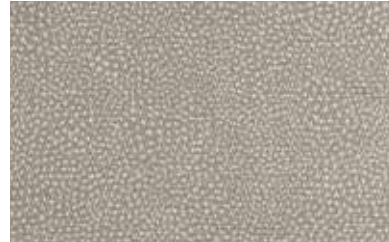


LEBB65-32 Spring Rain

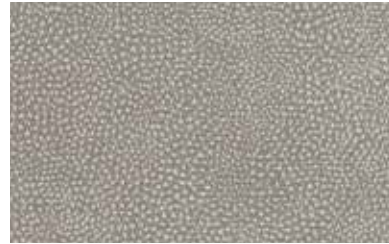
WALLCOVERING

TRANSCENDENCE

Stippled dots revolve across the handwoven paper, creating a calm and contemplative mood. The subtle ribbed texture forms a delicate and dreamy impression.



WLBB63-36 Silver Sage



WLBB63-32 Blanc de Chine



WLBB63-18 Tranquil



WLBB63-09 Topaz

Width: 36" (91.4cm) | Length: 12 yds

Shown: WLBB63-32 Transcendence – Blanc de Chine, Wallcovering
WLBB61-32 Aquarelle – Aqua Mist, Wallcovering





GRASSWEAVE [WTS]

STRATUS

Channels of twisted yarn in soft hues juxtapose dimensional bands of tonal color suspended in a weave of handwoven natural fibers, creating a linear architecture with textural rhythm.



LEBB66-06 Twine



LEBB66-32 Vapor



LEBB66-33 Silver Lake



WALLCOVERING

QUIETUDE

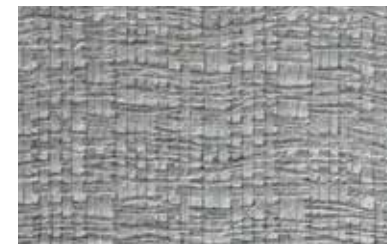
Handwoven from strips of paper and jute in a variegated pattern, Quietude lends a tonal palette with rich texture and a play of quiet dimension.



WLBB60-06 Bleached Bone



WLBB60-30 Citrine



WLBB60-32 Blanc de Chine



WLBB60-36 Dawn

Price Group: 5 | Max Width: 180"
Available Styles: Roman, Top Treatment

Shown: LEBB66-33 Stratus – Silver Lake, Old Style Roman
WLBB60-06 Quietude – Bleached Bone, Wallcovering

Width: 36" (91.4cm) | Length: 12 yds



WLBB62-12 Pashmina



WLBB62-30 Citrine



WLBB62-32 Cast Glass



WLBB62-36 Silver Mist

WALLCOVERING

UTOPIA

Utopia is a mesmerizing pattern of overlapping ovals printed on hand-placed cork over a layer of metallic that beautifully reflects the light. This generous and evocative pattern has an artful elegance that is both classic and modern.



GRASSWEAVE [WTS]

RETREAT

Delicately woven by hand from ramie and lustrous banana fibers, this elegant windowcovering has just a hint of color and softly lets the light retreat.



LEBB67-06 Bleached Bone



LEBB67-18 Tranquil



LEBB67-32 Blanc de Chine



LEBB67-36 Silver Sage