

AMY MEIER
BY
HARTMANN & FORBES®

DESIGNER COLLABORATION

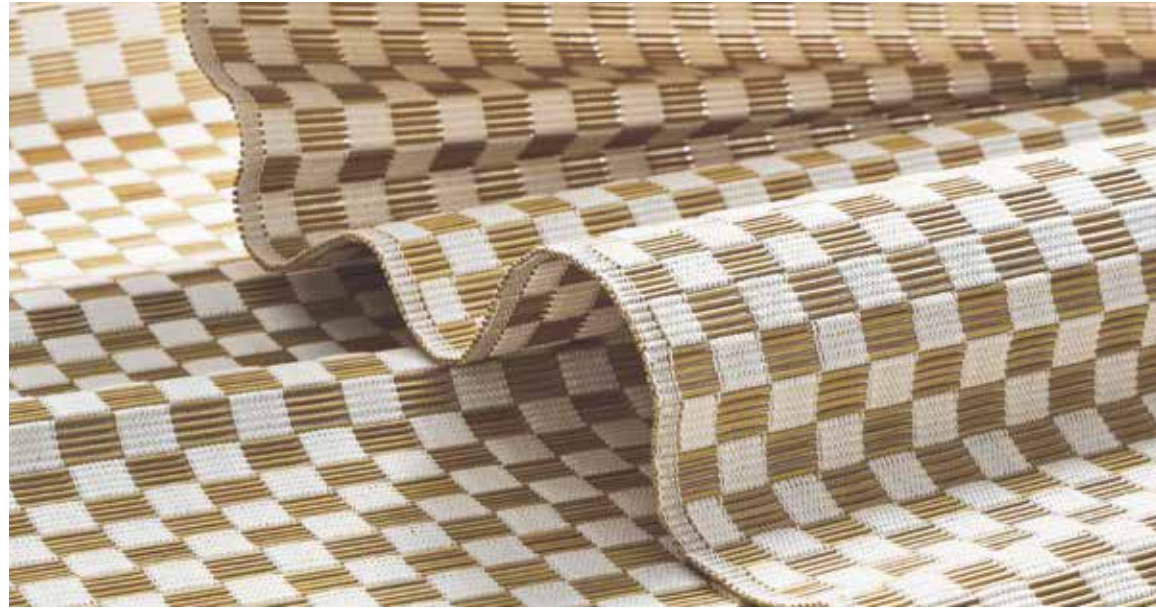




AMY MEIER

“IT WAS MY INTENTION FOR THESE WEAVES
TO WORK AND PLAY OFF EACH OTHER,
CREATING A FAR RICHER COMPOSITION”

Created as an homage to Summer and Scandinavian design, Amy Meier's new wall and window coverings blend traditional techniques with innovative ideas. Drawing inspiration from the land of the midnight sun, the designs incorporate the pillars of their design ethos: a love of nature, simplicity, structure, and a comfortable ease of living.



LEAM532-06 Wheat Alabaster

GRASSWEAVE [WTS]

KLARA

Handwoven of bamboo and thread, Klara is a contemporary reimagining of a classic check embodying effortless strength and grace. Intended to mimic wicker, the earthy wood tones contrasting the alabaster looped yarns create an intriguing interplay of tone and texture.

Price Group: 5 | Max Width: 100"
Available Styles: Roman, Top Treatment





TOVE

Handwoven of ramie, Tove is a free-spirited and free-flowing weave designed to mimic the voluptuous curves of an Austrian shade. The intricate pattern produces a playful and compelling dance between positive and negative space.



LEAM530-27 Wheat

GRACE

Inspired by the 1920s Swedish Grace movement, this design marries Scandinavian minimalism and neoclassical expressiveness. The tone-on-tone paper weave is finely embroidered with dimensional geometric motifs and simple botanical forms, yielding a landscape both elegant and elemental.



WLAM534-06 Ivory



Window Price Group: 5 | Max Width: 180"
Available Styles: Roman, Top Treatment

Wall Width: 36" (91.4cm) | Length: 10 yds

Shown: LEAM530-27 Tove – Wheat, Old Style Roman
WLAM534-06 Grace – Ivory, Wallcovering



GRASSWEAVE [WTS]

CECILIA

Cecilia's translucent weave exudes an ethereal quality, enhanced by a warm, grounding palette and dimensional striations. Masterfully handwoven from ramie, this design seamlessly blends refinement with raw, natural beauty.



LEAM531-27 Apricot

GRASSWEAVE [WTS]

AGNES

Luminous and refined, Agnes' silky banana fibers are meticulously loomed by hand, creating a sheer that is the epitome of sophisticated minimalism.

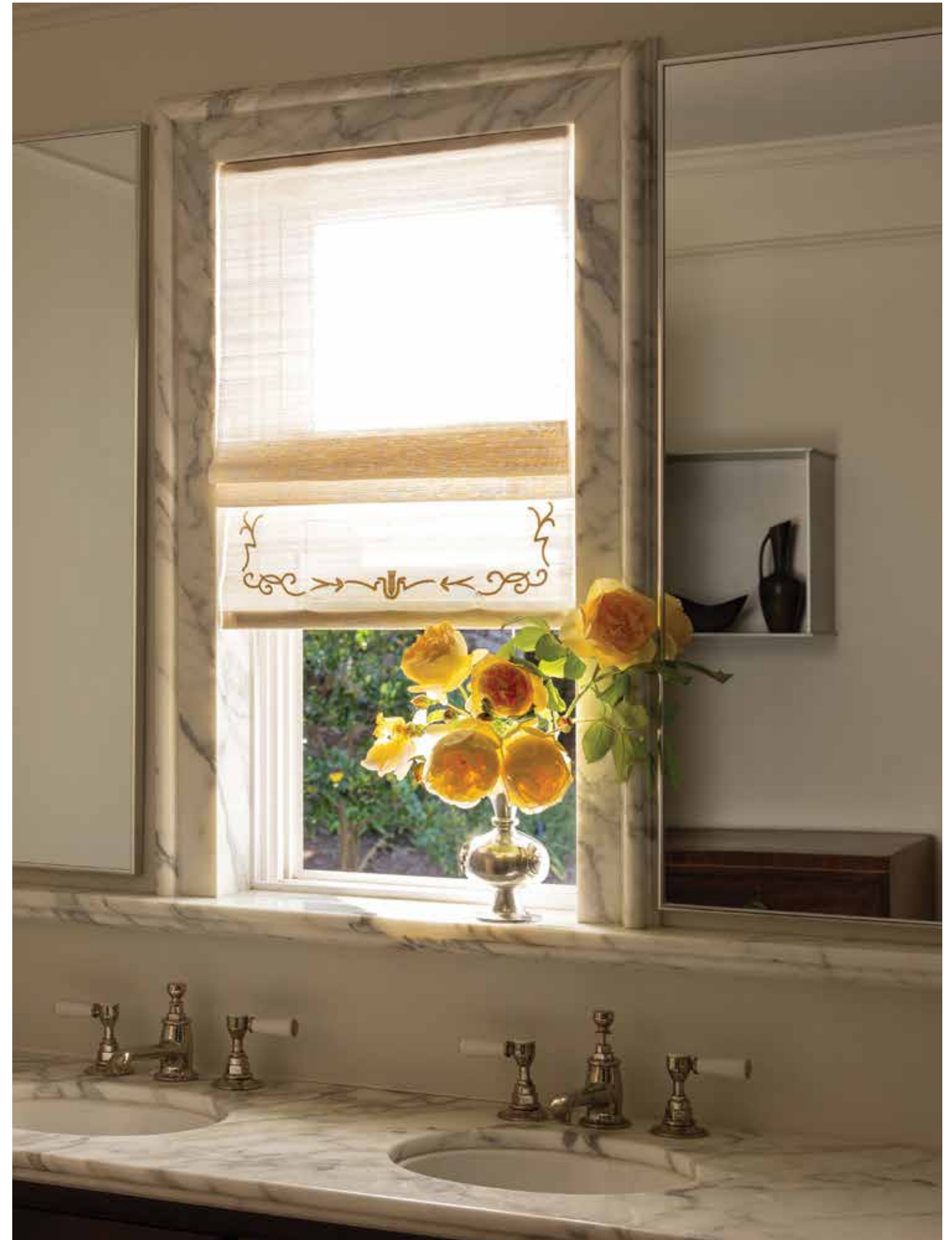


LEAM533-06 Dawn

Cecilia Price Group: 5 | Max Width: 180"
Available Styles: Roman, Roller, Top Treatment

Agnes Price Group: 5 | Max Width: 180"
Available Styles: Roman, Roller, Top Treatment

Shown: LEAM533-06 Agnes - Dawn, Old Style Roman
with custom embroidery drop hem

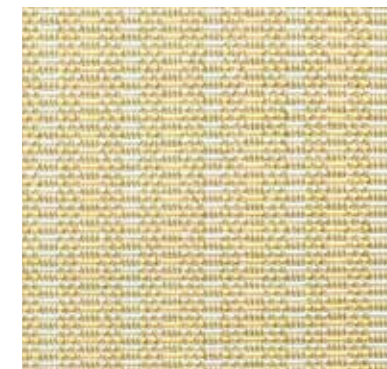




COLOURWEAVE [TTS]

ALMA

The sun-drenched look of a summer beach is reimagined in natural bamboo. Marked by its matchstick-style weft, this woven design combines cream and camel colors in a warm, nuanced weave that conjures a multitude of tiny grains of sand.



CWAM130-27 Sand



CWAM131-06 Pearl

COLOURWEAVE [TTS]

MAJA

A modern take on woven wood, Maja is handcrafted of natural bamboo, marked by a rigorous, alternating striped motif and a soft pearl palette that shimmers in the light.



FRAMEWORK

WALLCOVERING

Blocks of woven paper in varying sizes are hand-placed in a restrained linear architecture that can be custom arranged to create specific styles and ambiances with this wallcovering.



WLAM38-03 Alabaster



LEAM37-03 Alabaster

GRASSWEAVE [WTS]

The large repeating windowpane motif is inspired by the chogak bo or patchwork style of Korean Bojagi. Masterfully jacquard-handloomed of banana fiber, the textural geometry of this windowcovering brings dimension and differing opacities to the quiet, monochromatic composition.

Window Price Group: 5 | Max Width: 100"
Available Styles: Roman

Wall Width: 36" (91.4cm) | Length: By-the-Yard

Shown: WLAM38-03 Framework – Alabaster, Wallcovering

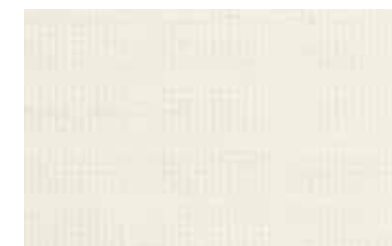




GRASSWEAVE [WTS]

STIPPLE

Informed by the crisp geometry of the Bauhaus, while capturing the quiet restraint of Japanese design, Stipple is distinguished by its soothing subtlety. Against a ground of refined ramie, a series of small, woven squares produce intriguing nuances in texture and dimension, its neutral palette lending it tonal beauty.



LEAM36-03 Alabaster



LEAM36-06 Opaline



LEAM36-09 Haze



LEAM36-42 Chestnut

Price Group: 5 | Max Width: 100"
Available Styles: Roman, Top Treatment

Shown: LEAM36-03 Stipple – Alabaster, Old Style Roman

888.582.8780 | HARTMANNFORBES.COM



GRASSWEAVE [WTS]

JOINERY

Paying homage to Bauhaus textile designer Anni Albers, this weave balances the structure of industry with a natural, organic sensibility. Rectangles and squares jacquard-handloomed of textural ramie and multicolored warp fibers form a complex geometry that conjures images of newsprint on a page.



LEAM34-09 Newsprint

GRASSWEAVE [WTS]

FRET

Inspired by the lustrous look of natural horsehair, Fret features an earthy, variegated palette of banana fiber handwoven with black warp thread.

The understated design, with its refined texture and iridescent beauty, feels both timeless and current.



LEAM35-87 Alloy





LEAM33-66 Tortoise

GRASSWEAVE [WTS]

STITCH

Stitch balances the linear architecture of the Bauhaus with the soft, natural appeal of Japanese designs. Multicolored abaca is freely hand-placed through an orderly framework of jacquard-handloomed ramie, creating a compelling play of tension and texture and a subtle sense of movement.

Price Group: 5 | Max Width: 100"
Available Styles: Roman, Top Treatment

Shown: LEAM33-66 Stitch - Tortoise, Old Style Roman



GRASSWEAVE [WTS]
GOSSAMER

Bojagi, a traditional Korean silk patchwork that becomes more beautiful and translucent with age, served as the inspiration for this tonal series. Alternating tight and loose weaves, rendered in ramie and warp threads, produce a beautifully irregular striped pattern, and its natural drape and rich texture highlights Gossamer's handwoven quality and the Japanese aesthetic of wabi-sabi.



LEAM31-03 Strie Chalk



LEAM32-03 Hatch Chalk

Price Group: 5 | Max Width: 180"
Available Styles: Roman, Top Treatment





GRASSWEAVE [WTS]

DAPPLE

True to its namesake, Dapple evokes the dreamy look of sunlight peeking through leaves on a tree.

The gauzy ground of handwoven ramie plays host to a freeform grid of ramie slubs. The raised, textural design softly filters the light and lends relaxed refinement to an interior.



LEAM30-03 Parchment

Price Group: 5 | Max Width: 180"
Available Styles: Roman, Top Treatment

Shown: LEAM30-03 Dapple - Parchment, Old Style Roman

888.582.8780 | HARTMANNFORBES.COM