

HARTMANN & FORBES

NATURAL WALLCOVERING





NATURAL WALLCOVERING

WE SEE WALLS AS WINDOWS, TOO.

The presence of light and shade on a wall should always enhance your natural surroundings. Our collection of authentic statement wallcoverings is created from natural rapidly-renewable fibers such as abaca, sisal, ramie and jute. Each textile is woven and finished by hand before being carefully backed.

Here you'll find sanctuary, and inspiration wall-to-wall. From the warm, herbal tones of wine country to traditional Southern geometry, each design reflects a distinctly American personality.

An all-embracing way to feel even more at home.

GRASSCLOTH
PAPER WEAVE
SPECIALTY

SEABOARD

Inspired by that fleeting moment when the sea mist-covered boardwalk mirrors the sunset, Seaboard reflects this elegantly subtle shimmer in unique designs using fibers of abaca and hand-stripped water lilies.



WL414-12 Landing



WL414-03 Cape



Shown: WL414-03 Seaboard – Cape, Wallcovering



Shown: WL414-36 Seaboard – Pier, Wallcovering



WL414-36 Pier

BAJA

Resembling the majestic sandy coastlines in the summertime, the Baja series radiates with a warm and inviting pale, sandy-patina unique to natural fibers such as mother of pearl, raffia and waterlily.



WL424-06 Coral Sands



WL424-03 White Sands

Shown: WL424-03 Baja – White Sands, Wallcovering
EW150-12 Sahara – Plateau, Old Style Roman



WL424-12 Desert Sands



Shown: WL424-12 Baja – Desert Sands, Wallcovering



WLAM38-03 Alabaster

FRAMEWORK

This sophisticated, yet soothing wallcovering is a contemporary nod to the traditional chogak bo or patchwork style of Korean Bojagi. Blocks of woven paper in varying sizes are hand-placed in a restrained linear architecture that can be custom arranged to create specific styles and ambiances.



AMY MEIER

Renowned for an aesthetic that seamlessly blends tradition and innovation, Meier's collection deftly fuses inspiration from Japanese design, the Bauhaus School, and traditional Korean cloth, using natural handwoven textiles to express the organic yet highly structured design.





HIGH DESERT

The High Desert series combines the stark beauty of the back country with the tenderness of life that thrives there. Striated, textured and dramatic, each weave exudes the warmth and character that draws people to the desert.



WL358 Sonoran



WL353 Ridgecrest



WL354 Sweetwater



WL352 Mineral Springs



WL359 Mojave



BEACHFRONT

At once relaxed and refined, Beachfront captures its namesake coastal feel. Artisan-loomed of textural raffia, its hand-painted fibers reveal variable brushstrokes for a laidback look. The colorized warp combined with whitewashed weft fibers in an open weave creates a dimensional, sun-dappled appearance.



WL425-18 Bandon



WL425-32 Seaside



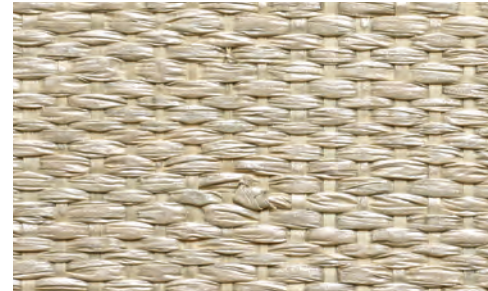
WL425-36 Newport

Width: 43" (109cm) | Length: By-the-Yard

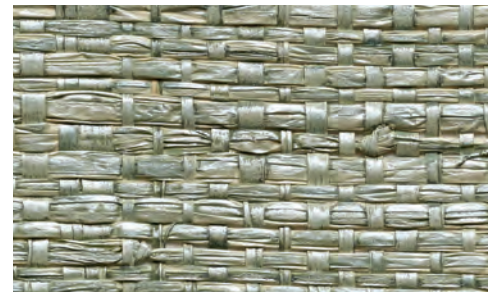
Shown: WL425-18 Beachfront – Bandon, Wallcovering
PE608-03 Unity – Peaceful Dove, Old Style Roman

ISLAND COAST

Elemental marine hues wash over this classic handwoven raffia weave with clear lacquer finish for subtle sheen. A contemporary classic that invites the outdoors in.



WL418-06 Shell



WL418-33 Sea Mist



WL418-15 Pebble



WL418-42 Tortoise



PENINSULA

Mineral browns and seafoam greens swirl and eddy in energetic motion over handwoven raffia with exposed micro knots. A pearlized glaze adds subtle glimmer to the weave and lends instant radiance to a space.



WL417-15 Sea Foam



WL417-33 Sea Break



WL417-45 Beach



WL417-60 Haze



MICHAEL S. SMITH

Recognized as one of the design industry's most respected talents, Michael S. Smith presents a fresh, globally-inspired collection that combines his signature blend of historically referenced patterns in bold, simple colors with the textural detailing from Hartmann&Forbes.



WLMS72-27 Sandstone



WLMS72-51 Limestone



WLMS72-57 Azul

AGRA LATTICE

Inspired by beautiful, hand-turned spindle designs used throughout Indian architecture for generations, Agra Lattice depicts a maze-like, hand-stenciled pattern with abstracts that play upon form, texture and movement. Smith has adapted the traditional spindle motif and has reinterpreted it into a rhythmic arrangement on rich, woven wallcovering that is as meditative as it is vibrant.

Width: 36" (91.4cm) | Length: 8yds (7.3m)

Shown: WLMS72-57 Agra Lattice – Azul, Wallcovering

KAMAKURA

Merging geometric shapes with Japanese imagery, this complex composition depicts beauty and serenity in a thoughtful, artistic way. In transposing the stenciled design to a textured grasscloth, Smith has created a layered backdrop that can coordinate seamlessly with both modern and traditional interiors.



WLMS75-42 Bronze



WLMS75-54 Malachite



WLMS75-57 Lapis



WLMS75-72 Ruby



Width: 36" (91.4cm) | Length: 8yds (7.3m)
Shown: WLMS75-54 Kamakura – Malachite, Wallcovering

JAPÓN GARDEN

An enduring, woven wallcovering imbued with rich, bold patterns that evoke flora in unusual and unexpected ways. Inspired by antique, hand-carved abaca stencils, these designs bring depth and interest to any room. Hand-mixed, saturated pigments are printed over a neutral background to create a warm, artistic and inviting effect.



WLMS74-51 Amber



WLMS74-57 Red/Blue



WLMS74-30 Verde



WLMS74-18 Stone



WLMS74-12 Mist



Width: 36" (91.4cm) | Length: 8yds (7.3m)
Shown: WLMS74-51 Japon Garden – Amber, Wallcovering



MADELEINE

At once romantic and refined, the Madeleine wallcovering was inspired by a fern motif often used by Madeleine Castaing, the iconic 20th-century French designer and antiques dealer. Natural sisal is meticulously embroidered in a palette of sage, linden and teal, creating a dimensional pattern of interlocking ferns, which is framed by a crisp windowpane grid.



WLMS77-30 Linden



WLMS77-54 Sage



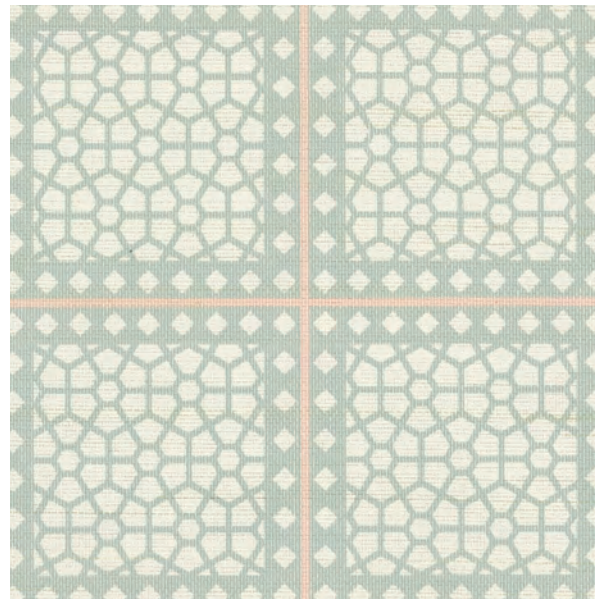
WLMS77-55 Teal

MAJORELLE

Inspired by the famous French artist Jacques Majorelle and his world-renowned garden and home in Marrakesh, Morocco, this sublime wallcovering features graphic arrangements reminiscent of architectural lattice screens found in palaces and temples from Morocco to the Middle East.



WLMS73-06 Sandstone



WLMS73-32 Celadon



Width: 36" (91.4cm) | Length: 9yds (8.2m)

Shown: WLMS77-30 Madeleine - Linden, Wallcovering

Width: 36" (91.4cm) | Length: 8yds (7.3m)

Shown: WLMS73-06 Majorelle - Sandstone, Wallcovering



RIVERFRONT

Resembling reflective waters of a river winding through a city, the Riverfront series is highlighted by golden metallic threads interwoven within soft white and silver abaca.

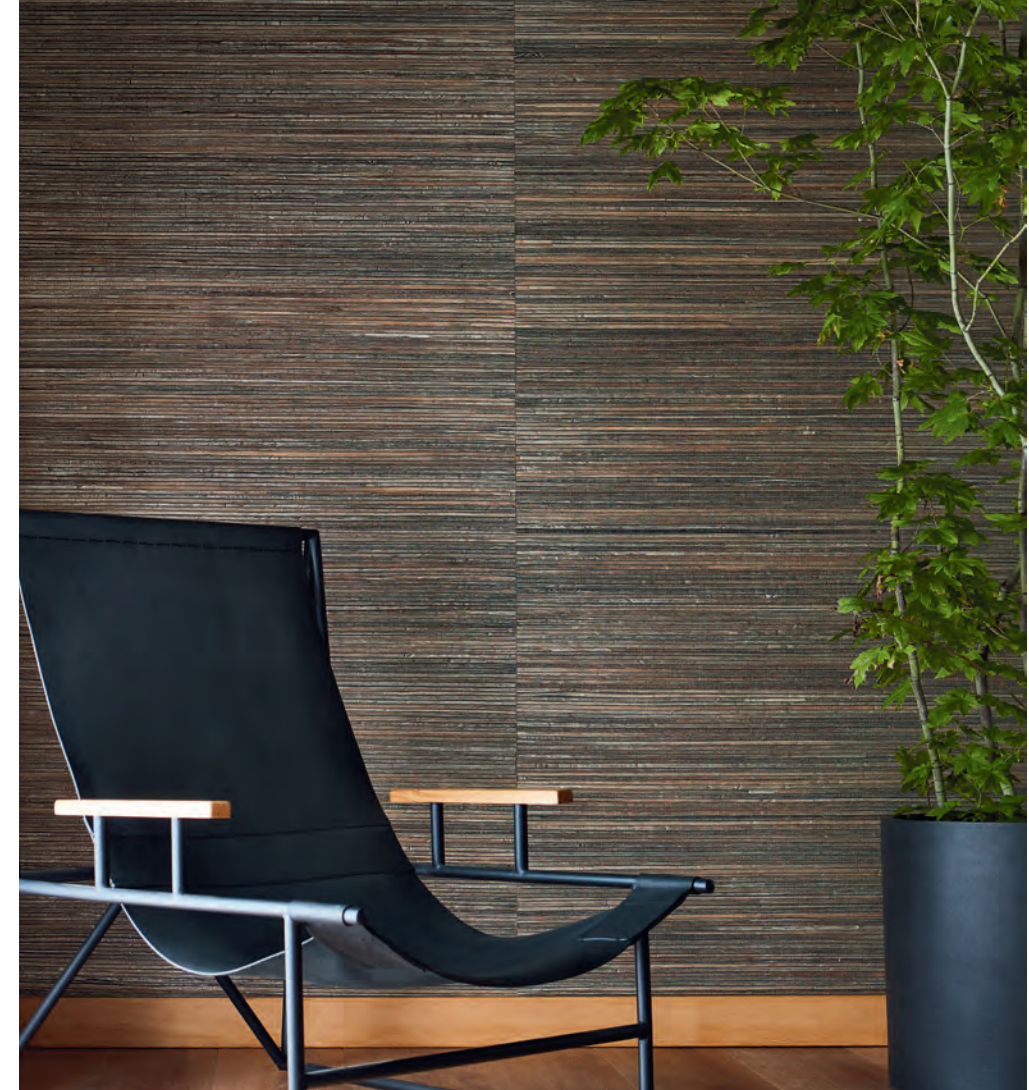


WL415-03 Sail



WL415-36 Mooring

Width: 43" (109cm) | Length: By-the-Yard
Shown: WL415-03 Riverfront – Sail, Wallcovering



WL420-21 Nantucket



WL420-42 Rockport



WL420-45 San Juan



WL420-51 Catalina

HARBOR

Sailboat-dotted inlets and ocean sunbeams inspired this eye-catching design. Hearty bac bac fiber is hand-stripped, handwoven, backed with colored paper, then washed with white or metallic pigments. This artisanal process creates a dimensional wallcovering of extraordinary character.

Width: 36" (91.4cm) | Length: 8yds (7.3m)
Shown: WL420-45 Harbor – San Juan, Wallcovering



BIG SKY

The spectacular color display of Montana's open ranges is translated into this vigorous textural weave of jute and linen. Exposed knots and striated sagebrush colors contribute to a strong linear design.



WL419-21 Badlands



WL419-33 Bighorn



NORTH ESTATE

The hand-hewn weaves of the North Estate series provides walls with a cultivated and distinct patina reminiscent of fertile, sun-dappled valleys draped with vine-ripened fruit.



WL322 Chateau



WL323 Barrique



WL321 Blanc



WL326 Domaine



LISA KANNING

Kanning's love of organic shapes and materials informs her collection for Hartmann&Forbes. Layered window and wall coverings are detailed with intricate patterns that mimic those found in nature while maintaining a sophisticated sensibility that suits a range of settings.



WLLK47-30 Sage
Trimmed Width: 32" (81.3cm)

SYCAMORE

Reminiscent of Sycamore tree bark, this series features a captivating camouflage pattern. The mottled motif is rendered in a complex layering of silver-painted paper, laser-cut cork, sisal and metallic embroidery – the interplay of materials bringing rich depth and organic beauty.



WLLK47-30G Sage Ground

MARSH

A desolate field of wizened grass is reimagined as a vibrant landscape in this series. Tonal paper weave is embroidered with dimensional stitches that free and separate the fibers. Its fringed eyelash effect is reminiscent of the graceful movement of grass in a marsh.



WLLK49-18 Fawn
Trimmed Width: 32" (81.3cm)



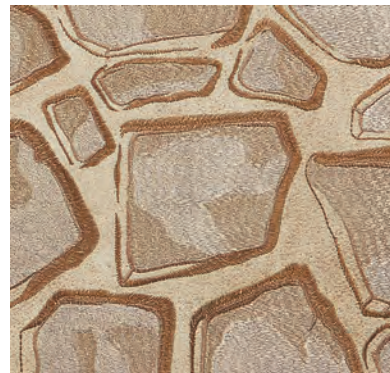
WLLK49-18G Fawn Ground





ROCKS

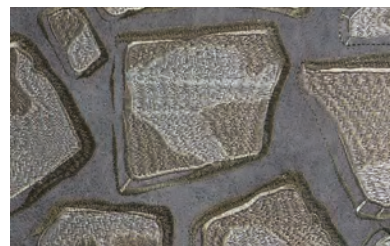
Faux suede intricately stitched in complementary colors creates this collection's trompe l'oeil effect of strewn rocks. Artful tonal shifts produce a play of shadow and angles that lend depth and detail to the pattern, the sheen from the embroidery enhancing its dimensional quality.



WLLK48-18 Topaz
Trimmed Width: 32" (81.3cm)



WLLK48-18G Topaz
Ground



WLLK48-60 Pyrite
Trimmed Width: 32" (81.3cm)

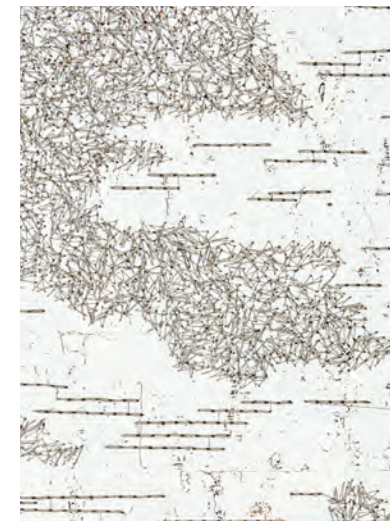


WLLK48-60G Pyrite
Ground



BIRCH

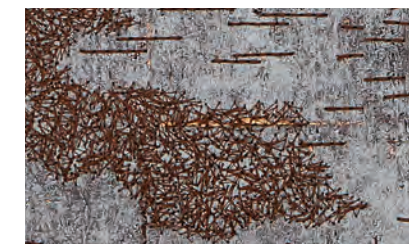
Inspired by natural birch bark, this series reinterprets its namesake in a richly textural design. The large-scale, dimensional pattern is elaborately stitched with slate or gold threads that play a delicate counterpoint to a rough-hewn cork ground over metallic paper.



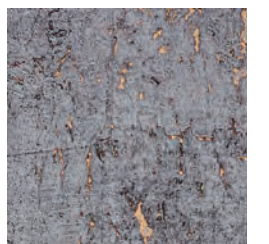
WLLK46-03 Gardenia
Trimmed Width: 32" (81.3cm)



WLLK46-03G Gardenia
Ground



WLLK46-34 Wisteria
Trimmed Width: 32" (81.3cm)



WLLK46-34G Wisteria
Ground

CASCADIA

An energetic metropolis is nestled between the volcanic peaks of the Cascade Range and the shimmering waters of the Puget Sound. Fresh and dynamic, these weaves embody the beauty of the Pacific Northwest.



WL310 Rainier



WL311 Queen Anne



WL315 Pinehurst



WL313 Alki



WL314 Madrona



WL316-84 Sandpoint

SANTA LUCIA

Windswept seas and rugged shorelines are nearly palpable in the weaves of the Santa Lucia series. Each pattern gracefully infuses visions of cleansing mists, wild bluffs and coastal skies into any interior.



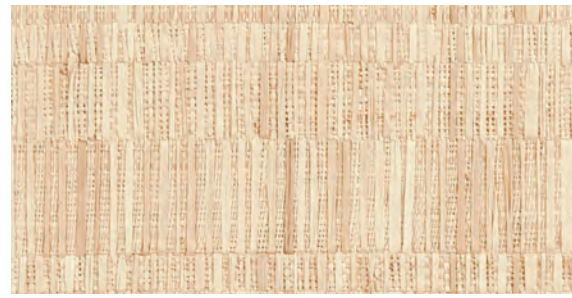
WL364 Cypress



WL366 Ventana

SAVANNAH

Equal parts earthy and elegant, Savannah is reminiscent of beautiful river reeds that grow in southern rivers. Handwoven of raffia with rich textural and tonal contrasts, the wallcovering features designs that evoke the tall, grass-like plants and their natural palette.



WL427-09 Talahi



WL428-09 Ogeechee

Width: 35½" (90cm) | Length: By-the-Yard

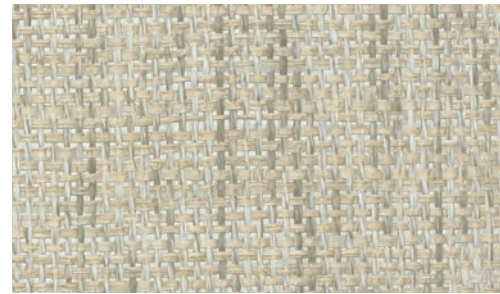
Shown: WL427-09 Savannah – Talahi, Wallcovering
LE5909 Heirloom – Branch, Old Style Roman

Shown: WL428-09 Savannah – Ogeechee, Wallcovering
LE6109 Studio Concepts – Creel, Old Style Roman



ACRE

High on a Montana plateau at the edge of a pond, sun-bleached grasses sway in the wind. Horses gather to sip the clear water. These designs draw upon the serenity of the breeze, grass and water.



WL409-15 Chaff



WL409-12 Oat



WL409-21 Hay

Width: 36" (91.4cm) | Length: 8yds (7.3m)
Shown: WL409-21 Acre – Hay, Wallcovering



TAHOE

Drawing inspiration from the golden tones that ignite the lip of Lake Tahoe's snow-lined shores, this series' blended weave of gold metallic threads into a woven paper backdrop encapsulates Tahoe's stunning late winter evenings.



WL410-06 Snowdrift



WL410-21 Sundown



WL410-12 Icecap



WL410-81 Starlight

Width: 36" (91.4cm) | Length: 11yds (10m)
Shown: WL410-81 Tahoe – Starlight, Wallcovering

CHRISTOPHER CHECK

An oversized check pattern is gravure-printed upon handwoven sisal of natural variation, creating a windowpane pattern. Framed in subtle, sophisticated colors, it imparts a graphic punch that enlivens the rigorous geometry.



J. RANDALL POWERS

Celebrated for his classic yet cosmopolitan style, the J. Randall Powers Collection reveals the artisanal quality of Hartmann&Forbes' handwoven textiles combined with Powers' penchant for tailored patterns with a playful twist.



WLJP24-72 Brick



WLJP24-33 Slate



WLJP24-18 Taupe

Width: 36" (91.4cm) | Length: 12yds (10.9m)
Shown: WLJP24-72 Christopher Check – Brick, Wallcovering

JG PLAID

Taking notes from the JG Plaid handwoven Grassweave design, the JG Plaid wallcovering is defined by crisscrossing pencil stripes in hues of linen. The natural woven sisal is flooded with a moss green color and the stripes are gravure-printed for an intriguing dimensional look.



WLJP25-78 Linen on Moss

Width: 36" (91.4cm) | Length: 12yds (10.9m)
Shown: WLJP25-78 JG Plaid – Linen on Moss, Wallcovering



Width: 36" (91.4cm) | Length: 12yds (10.9m)
Shown: WLJP27-12 Morgan – Taupe, Wallcovering



MORGAN

J. Randall Powers drew inspiration for this series from his collection of Native American baskets. Marked by a refined zigzag pattern that's gravure-printed in three natural tones on a jute-paper ground, the wallcovering delivers visual dimension and a touch of playful flair.



WLJP27-09 Cognac



WLJP27-12 Taupe



WLJP27-33 Slate



NEW

CANYON

Drawing inspiration from the dramatic terrain of the American Southwest, Canyon's combination of geometric forms conjures its towering mesas and expansive plains.



WL429-12 Redrock



WL429-36 Keystone



DISTRICT

The unmistakable history of our nation's capital is reflected in the District series' warm colors and clean lines, which honor the past while celebrating today's contemporary design ideals.



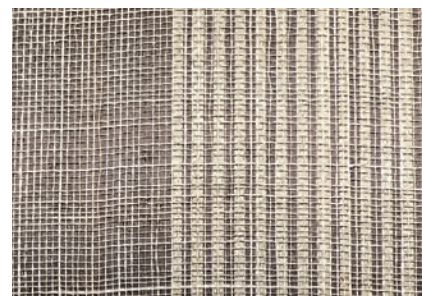
WL303 Trinity



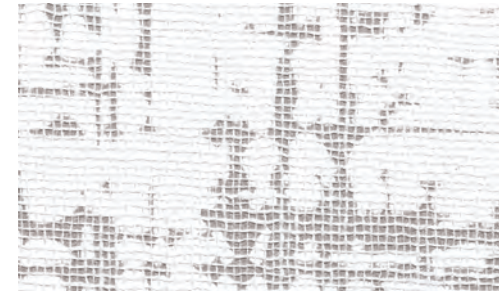
WL304 Georgetown



WL302 Dupont



WL305 Bethesda



WL422-15 Boulevard



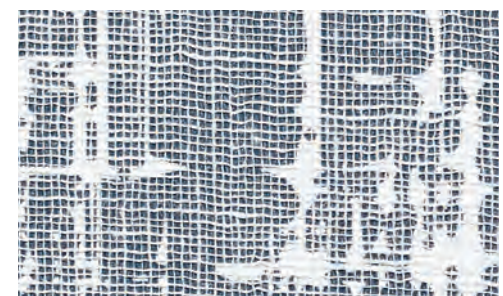
WL422-09 Walkway



WL422-60 Skyway

UPTOWN

This refined wallcovering conveys the energy of urban construction. An abstract grid design is enlarged, rotary printed, then a thin layer of linen delicately hand applied to soften the effect. The result is a seamless backdrop that adds an element of the unexpected.



WL422-84 Rooftop

ALEUTIAN

Aleutian's soft, suede-like texture reveals one-of-a-kind tonal variations that enrich this exotic, artisan-crafted wallcovering. Painstakingly hand-placed sano panels in an organic palette create a quiet composition.



WL426-03 Glacier



WL426-12 Alpenglow



WL426-15 Moraine



WL426-30 Verglass

Width: 36" (91.4cm) | Length: 12yds (10.9m)

Shown: WL426-12 Aleutian - Alpenglow, Wallcovering
LE5815 Dash - Ceramic, Roller Style



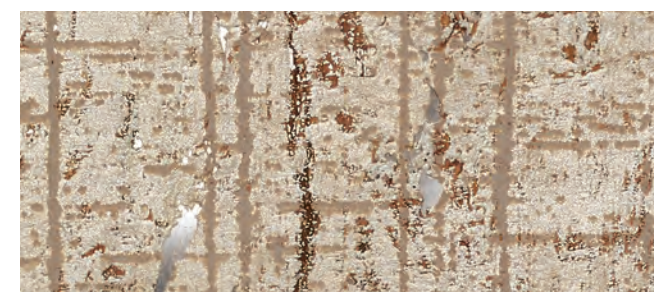


CATHEDRAL

Resembling the glossy bark of rain-soaked aspens in the Cathedral region of the Colorado mountains, this innovative design is created with hand-sliced cork skillfully placed on metallic backing paper, then printed with a design inspired by winter woodlands. This meticulous process results in a lasting impression.



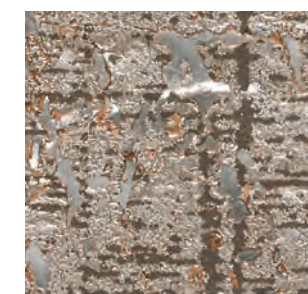
WL423-03 White Gold



WL423-09 Gilded



WL423-39 Bronze



WL423-18 Copper

Width: 36" (91.4cm) | Length: 8yds (7.3m)

Shown: WL423-09 Cathedral - Gilded, Wallcovering



ALPINE

Hand-stripped cork reminiscent of snowcapped summits, rich pine forests and glacial meadows brings home the seldom-experienced richness of a soft-to-the-touch wilderness.



WL376 Pine



WL375 Bristlecone



WL374 Aspen



WL378 Spruce



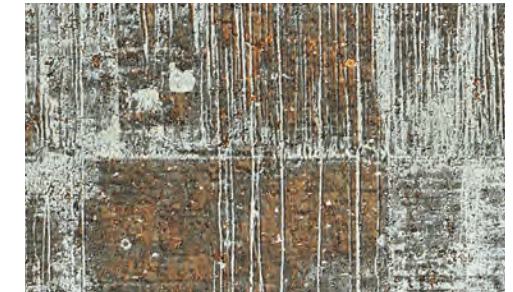
WL381 Lincoln Park



WL382 Bucktown

LAKE SHORE

The radiant finish of the Lake Shore series is reminiscent of skyscrapers rising up from Lake Michigan in downtown Chicago. Hand-peeled cork is backed with metallic paper and hand blocked with a metallic finish.



WL383 Edgewater





NORTHSANDS

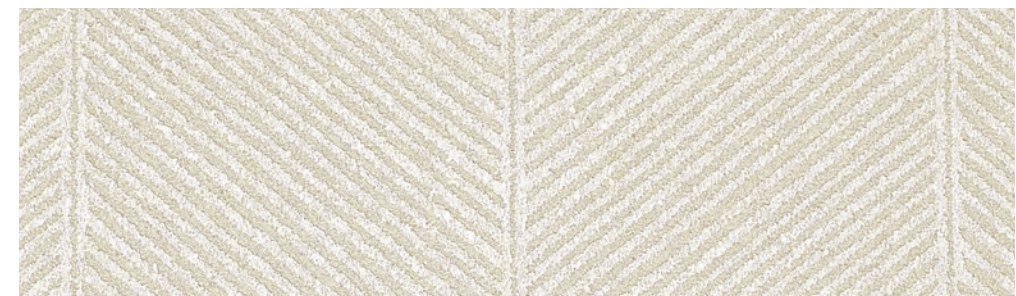
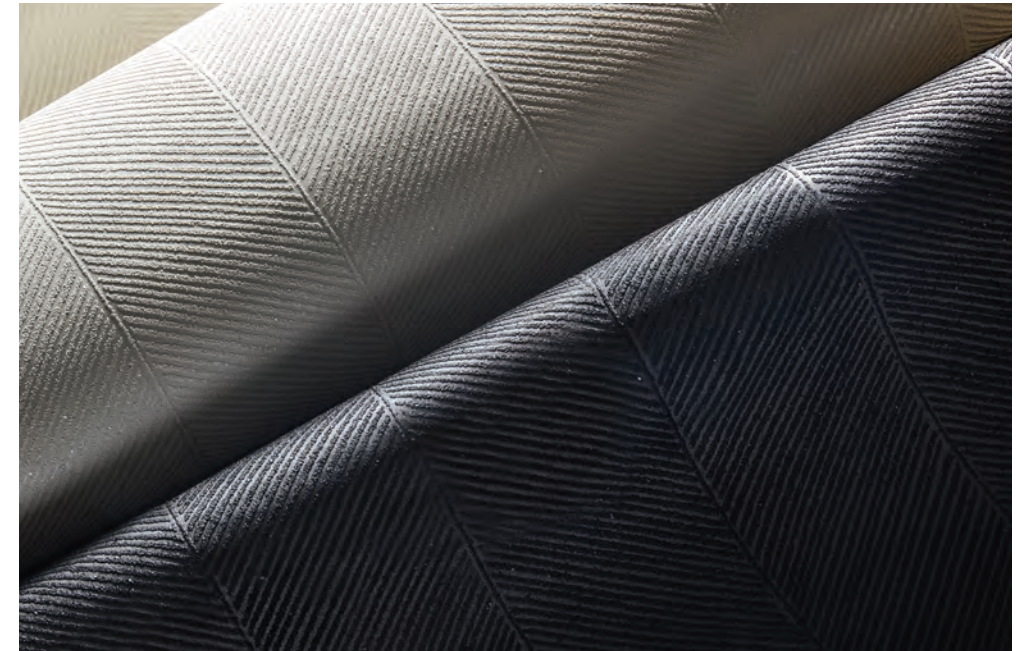
The Northsands series features a neutral palette of vertical mica sand stripes against the subtle shimmer of a metallic backdrop. Northsands can be installed railroaded to create a horizontal stripe.



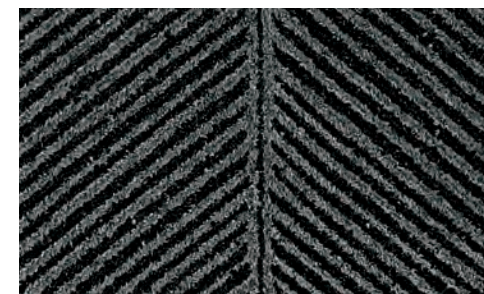
WL412-36 Sterling



WL412-03 Pearlescent



WL413-03 Clouded



WL413-84 Eclipse

COASTLINE

Reflecting the dramatic rise and fall of the ocean tide, the Coastline series presents an oversized, herringbone-inspired mica sand pattern complemented by a dramatic metallic backdrop.