

HARTMANN & FORBES

GRASSWEAVE MOTIFS™





WOVEN-TO-SIZE

GRASSWEAVE MOTIFS™

CONTEMPORARY DESIGNS
OF HISTORICAL PATTERNS

A visual representation of the concept of motifs, this collection deploys repeating decorative patterns to artfully express emotions and ideas. Ranging from the geometric and abstract to the botanical and traditional, these intricate designs are handwoven of natural fibers on a jacquard loom for rich color and texture and a calming, rhythmic effect.



LE6357 Azraq

CANEWORK

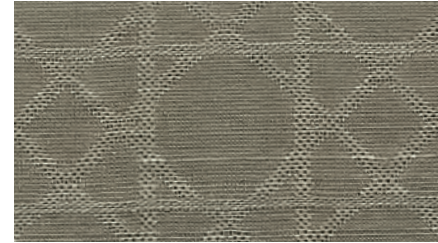
Modeled after classic woven-cane chairs, this refined series is marked by a recurring geometric motif. The intricate design is jacquard-handloomed of natural banana fiber, crisscrossing the tonal ground in an elegant lattice pattern; the colors create contrast and visual dimension.



LE6315 Ramadi



LE6312 Ramil



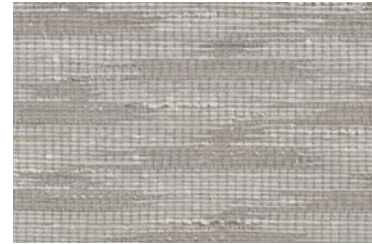
LE6336 Hasa

PINISI

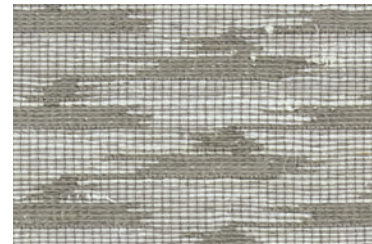
Traditional sailing vessels, known as pinisi, inspired this series – a modern take on traditional design. Jacquard-handloomed of ramie, Pinisi features a motif of the rigged boats in silhouette.



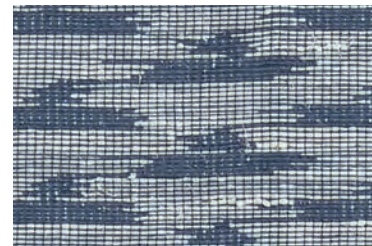
LE6412 Pasir



LE6415 Abu



LE6436 Batu



LE6457 Laut





NEW

SKY LADDER

Inspired by a 1940s Diné (Navajo) wool saddle blanket, Sky Ladder is defined by a series of hexagonal shapes descending in vertical bands with delicate diamonds for artful detail. Jacquard-handloomed of ramie, its rich texture complements the tone-on-tone beauty, while the ladder-shaped motif symbolizes the rider's journey along rivers and under the cloud-filled sky.



LESF93-30 Sage



LESF93-18 Tan



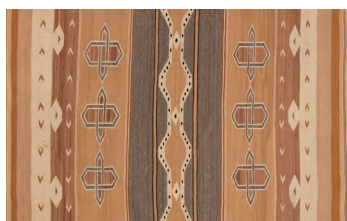
LESF93-21 Ochre



LESF93-36 Silver

INSPIRATION

Saddle Blanket, ca. 1940
 Artist once known
 Diné (Navajo)
 Wool
 Museum of Indian Arts and Culture
 Santa Fe, New Mexico
 48188/12



MIAC
 Hartmann&Forbes was honored to view the Museum of Indian Arts and Culture's extensive textile, basketry and pottery collections and to select four objects to reimagine in a range of modern windowcoverings. A portion of this collection's proceeds supports MIAC and its mission.



MUSEUM OF
 INDIAN ARTS + CULTURE

NEW

STARLIGHT

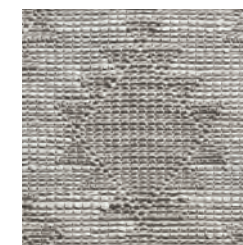
The Starlight series reimagines a turn-of-the-century storage basket from California's Yurok tribe. Jacquard-handwoven of ramie, the elemental motif evokes the timeless symbolism of a star-filled sky, serving as a guide for explorers and travelers alike.



LESF90-12 Parchment



LESF90-18 Tan



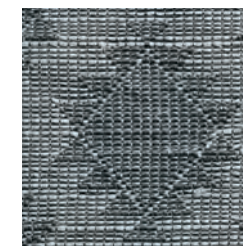
LESF90-36 Silver



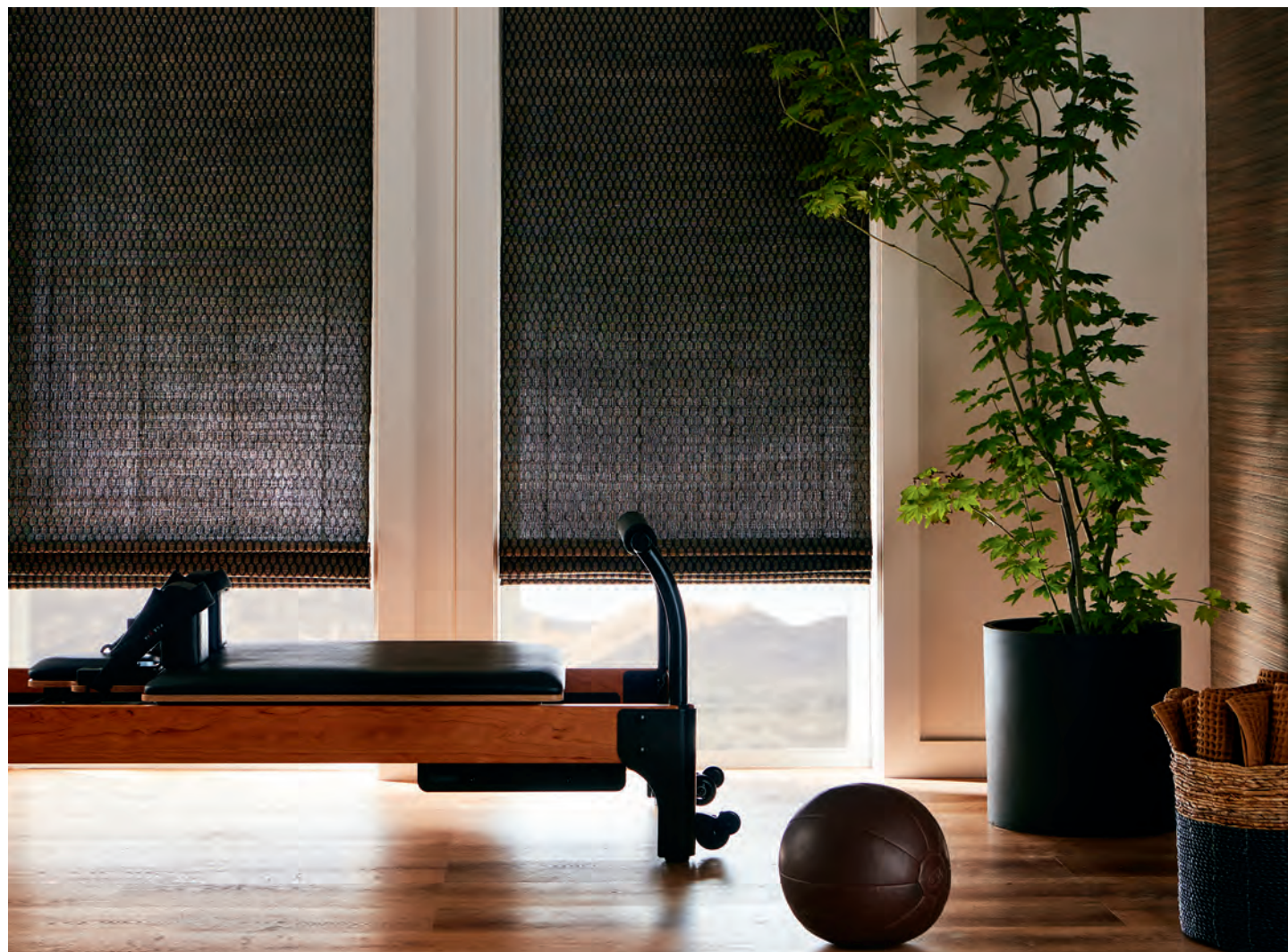
INSPIRATION
 Storage Basket, ca. 1904
 Artist once known
 Yurok people of California
 Hazelnut rods, spruce root, bear-grass, maidenhair fern stem
 Museum of Indian Arts and Culture
 Santa Fe, New Mexico
 14296/12



LESF90-42 Bronze



LESF90-55 Turquoise



NEW
WATERLINES

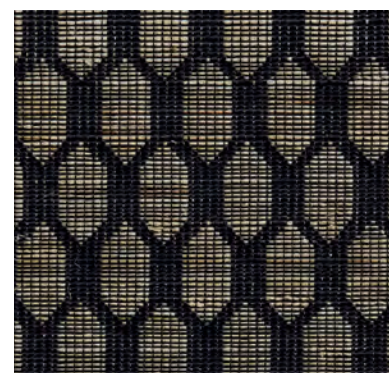
Waterlines draws inspiration from a 1977 Pueblo pottery jar designed for carrying water. Jacquard-handwoven of ramie, its geometric honeycomb pattern in a two-tone palette captures the elegant simplicity of interlocking circles formed when water swirls around river rocks.



INSPIRATION
 Pottery Jar, ca. 1977
 Artist once known
 Santo Domingo Pueblo,
 Museum of Indian
 Arts and Culture
 Santa Fe, New Mexico
 54324/12



LESF91-21 Ochre



LESF91-87 Onyx

Price Group: 5 | Max Width: 100"
 Available Styles: Roman, Top Treatment
 Shown: LESF91-87 Waterlines – Onyx, Old Style Roman



NEW
PASSAGES

A 1960s Hopi woven bowl made of yucca leaves inspired Passages. Ramie is jacquard-handloomed in a rhythmic rectilinear pattern that draws references to the original conversation between the maker and the basket. The tactile weave softens the crisp geometry while evoking the intricate look of basketry.



LESF92-09 Chamois



LESF92-84 Graphite

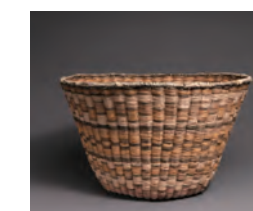


LESF92-21 Ochre



LESF92-42 Bronze

INSPIRATION
 Bowl, ca. 1960-1968
 Ada Fredricks, Hopi
 Yucca leaves, rabbit brush, and galleta grass
 Museum of Indian Arts and Culture
 Santa Fe, New Mexico
 56157/12

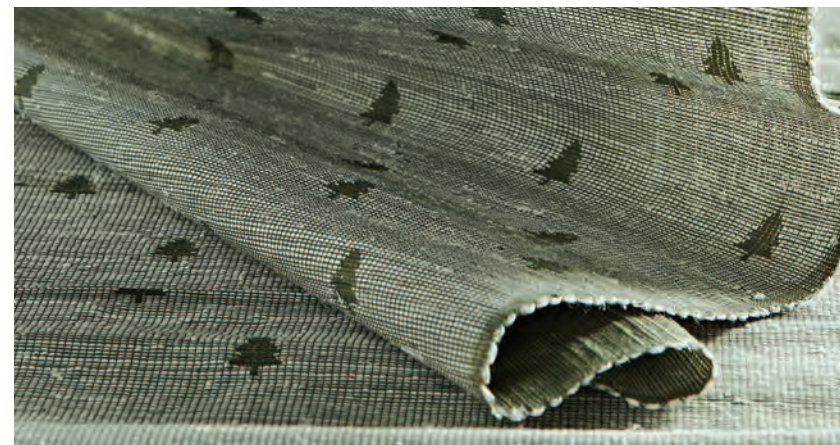


Price Group: 5 | Max Width: 100"
 Available Styles: Roman, Top Treatment
 Shown: LESF92-21 Passages – Ochre, Traditional Style Roman



MAX HUMPHREY

Recognized as a design change-maker and known for his trademark lived-in layered look, Humphrey's collection celebrates modern Americana with a nod to nostalgia and a fresh take on classic prints and patterns rendered in Hartmann&Forbes' handwoven natural textiles.



LEMH505-54 Pine

NEW

TREES

Humphrey's yearlong road trip exploring America's National Parks inspired this series. With a nod to nature, the tree motif is jacquard-handloomed of ramie in a forestry pine palette that brings the outdoors in.

Price Group: 5 | Max Width: 100"
Available Styles: Roman, Top Treatment
Shown: LEMH505-54 Trees - Pine, Old Style Roman



QUILT

A modern take on traditional quilts, this series nods to the nostalgia of handmade crafts with its classic chain motif. The geometric pattern and two-tonal colors provide a contemporary twist, while jacquard-handloomed ramie creates subtle variations in the weave for rich texture and visual dimension.



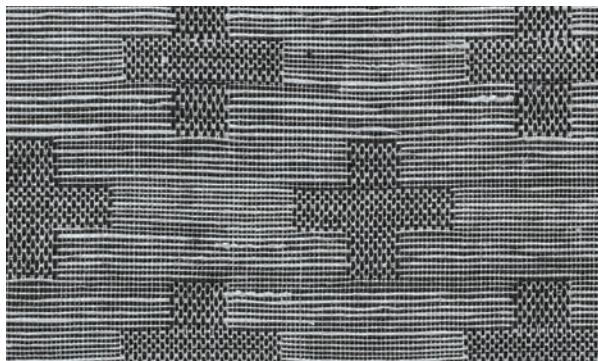
LEMH504-18 Faded Khaki



LEMH504-57 Indigo



Price Group: 5 | Max Width: 100"
Available Styles: Roman, Top Treatment
Shown: LEMH504-57 Quilt - Indigo, Old Style Roman
WL374 Alpine - Aspen, Wallcovering



LEMH501-84 Charcoal

CROSS

An age-old symbol in nature and iconography, the venerable cross is reinterpreted in jacquard-handloomed ramie. The crosses, formed of an intricate check pattern, float in a textural landscape delineated by horizontal lines, its tonal black-and-white palette producing a primitive, understated design.

CABLEKNIT

Reminiscent of iconic New England sweaters, this series is distinguished by its rich dimension rendered on a jacquard-handloom. A dense weave of refined ramie features alternating cable ribs framed in columns. They twist down planes of fabric, imparting visual depth and subtly raised texture in a design at once classic and contemporary.



LEMH503-15 Heathered Gray



LEMH503-57 Heathered Blue

