



INTEGRATION INTERFACES



Bond Bridge®

- Up to 30 shades
- Up to 2500 sq ft
- One-year warranty



Bond Bridge Pro®

- Up to 50 shades
- Up to 3500 sq ft
- Apple Home Kit Integration
- Three-year warranty

APP, VOICE AND INTEGRATION

The Bond Bridge with the feature-rich Bond Home App, enables easy shade control from anywhere via your smartphone or tablet. Customize scenes, schedules, and enjoy seamless integration with third party control systems, and your digital assistant with voice control. On-site programming ensures tailored functionality to user preferences.

Project may require more than one Bond Bridge depending on square footage and number of shades controlled.

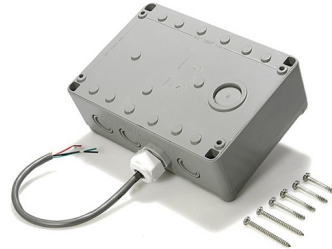
Universal RTS Interface II

A 16 channel interface to converts RS232 & RS485 protocols into RTS commands.



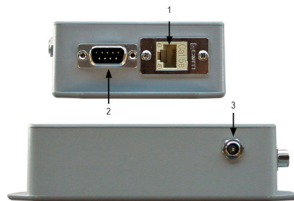
RTS Dry Contact Interface

A single channel device to communicate between home automation or 3rd party systems and RTS motors. Requires three contact closures: stop, up, and down.



Somfy Connect LTI

Allows Lutron®'s hand-held and in-wall controls from RadioRA® 2, HomeWorks® QS, Grafik Eye® QS, and Quantum® systems to operate Somfy RTS and Somfy SDN motorized applications.



ELEMENT	FUNCTION
1 SDN BUS	RS485 - Connect to SDN system or URTSI II
2 Integration Port	RS232 - Connect to Lutron Integration port
3 Power	3.5mm Barrel connector (female)