

HARTMANN & FORBES

WOVEN-TO-SIZE GRASSWEAVE





WOVEN-TO-SIZE

GRASSWEAVE

OUR SIGNATURE HANDWOVEN LINE

A modern collection of organic textures, earthy colors and sophisticated patterns. Artisanally handwoven of premium natural fibers, ranging from arrowroot, ramie, abaca, banana, vetiver, palm and water hyacinth.

ETHEREAL

Woven by hand of sheer banana fiber, this design expresses a delicate sensibility in an array of natural colorways. Ethereal's tonal, silky-soft fibers and natural sheen lend a light, refined look while subtle, hand-tied knots add a hint of relaxed texture.



LE5206 Wispy **NEW**



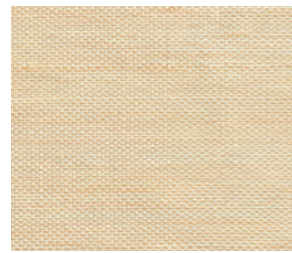
LE5306 Veil **NEW**



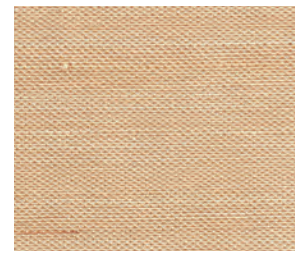
LE5315 Brume **NEW**



LE5215 Aire



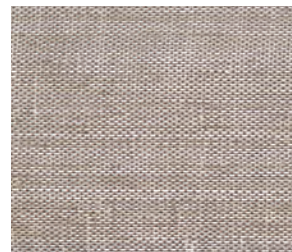
LE5227 Drift **NEW**



LE5251 Feathery **NEW**



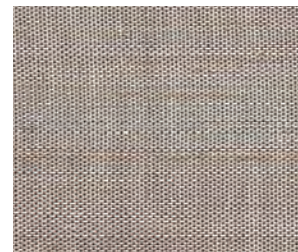
LE5209 Gleam



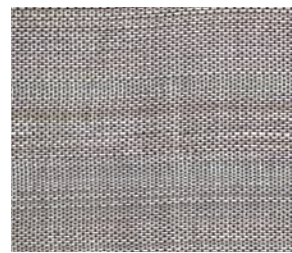
LE5212 Whisper



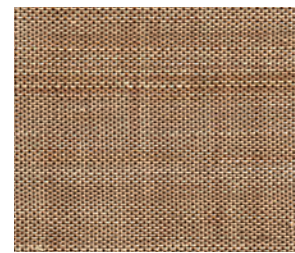
LE5218 Sublime **NEW**



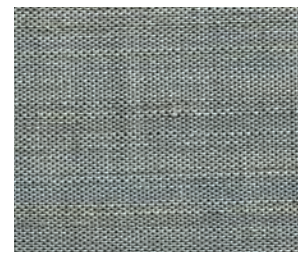
LE5239 Hazee



LE5260 Breeze



LE5245 Serene **NEW**



LE5255 Celestial **NEW**





DRIFTWOOD

Inspired by the casual elegance of sun-washed driftwood, this design blends ivory with weathered hues of gold, grey and off-black.



LE1109 Selatan



LE1107 Utara



LE1124 Togo



LE1160 Sapi

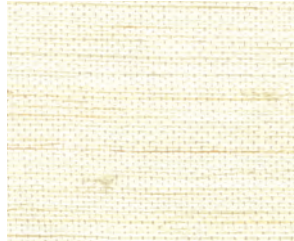


LE1187 Rinca

Price Group: 4 | Max Width: 180"
Available Styles: Roman, Roller, Top Treatment
Shown: LE1160 Driftwood – Sapi, Traditional Style Roman

ELEMENTS

Fresh, pure and timeless, Grassweave Elements™ richly refined linen-like textile offers sophisticated beauty in a wide array of colorways ranging from neutral hues to dramatic darker tones.



LE1006 Cambric



LE1053 Silesia



LE1050 Sendal



LE1055 Sindon



LE1062 Challis



LE1015 Cambresine



LE1054 Borato



LE1084 Zephyr



LE1087 Georgette





DASH

Loomed by hand of lightweight banana fiber, this understated design layers easily with a range of styles in four tonal colorways. A random weft pattern produces the design's subtle horizontal dash, creating a contemporary twist on classic striped patterns.



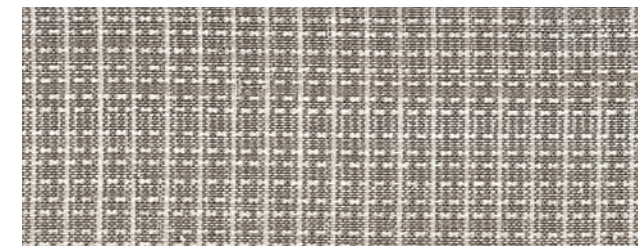
LE5803 Porcelain



LE5815 Ceramic



LE5832 Verde



LE5839 Stone

Price Group: 4 | Max Width: 120"
Available Styles: Roman, Roller, Top Treatment
Shown: LE5815 Dash – Ceramic, Roller Style with Valance
WL426-12 Aleutian – Alpenglow, Wallcovering



DAPPLE

True to its namesake, Dapple evokes the dreamy look of sunlight peeking through leaves on a tree. The gauzy ground of handwoven ramie plays host to a freeform grid of ramie slubs. The raised, textural design softly filters the light and lends relaxed refinement to an interior.



LEAM30-03 Parchment



GOSSAMER

Bojagi, a traditional Korean silk patchwork that becomes more beautiful and translucent with age, served as the inspiration for this tonal series. Alternating tight and loose weaves, rendered in ramie and warp threads, produce a beautifully irregular striped pattern, and its natural drape and rich texture highlights Gossamer's handwoven quality and the Japanese aesthetic of wabi-sabi.



LEAM32-03 Hatch Chalk



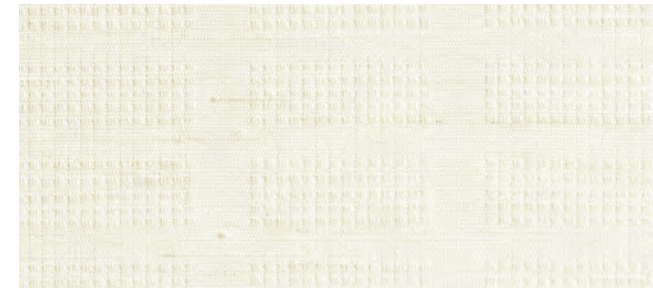
LEAM31-03 Strie Chalk



AMY MEIER

Renowned for an aesthetic that seamlessly blends tradition and innovation, Meier's collection deftly fuses inspiration from Japanese design, the Bauhaus School, and traditional Korean cloth, using natural handwoven textiles to express the organic yet highly structured design.





LEAM36-03 Alabaster



LEAM36-06 Opaline



LEAM36-09 Haze



LEAM36-42 Chestnut

Price Group: 5 | Max Width: 100"
Available Styles: Roman, Top Treatment

STIPPLE

Informed by the crisp geometry of the Bauhaus, while capturing the quiet restraint of Japanese design, Stipple is distinguished by its soothing subtlety. Against a ground of refined ramie, a series of small, woven squares produce intriguing nuances in texture and dimension – its neutral palette lending tonal beauty.

FRAMEWORK

The large repeating windowpane motif is inspired by the chogak bo or patchwork style of Korean Bojagi.

Masterfully jacquard-handloomed of banana fiber, the textural geometry brings dimension and differing opacities to the quiet, monochromatic composition.

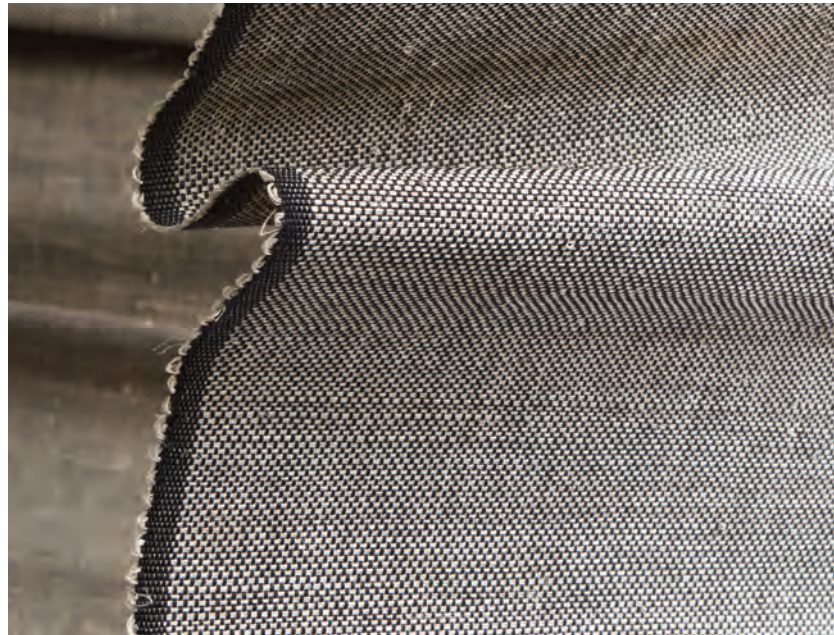


LEAM37-03 Alabaster



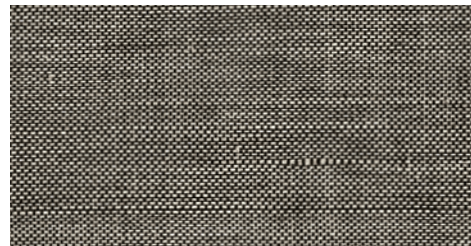
Price Group: 5 | Max Width: 100"
Available Styles: Roman

Shown: LEAM36-03 Stipple – Alabaster, Old Style Roman
WTS By-the-Panel: Lamp, Sconce, Chair and Room Screen



FRET

Inspired by the lustrous look of natural horsehair, Fret features an earthy, variegated palette of banana fiber handwoven with black warp thread. The understated design, with its refined texture and iridescent beauty, feels both timeless and current.

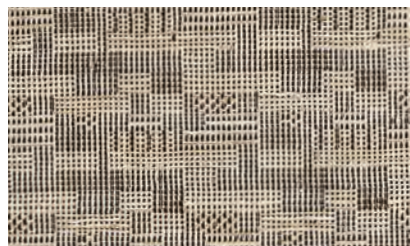


LEAM35-87 Alloy

Price Group: 5 | Max Width: 180"
Available Styles: Roman, Roller, Top Treatment

JOINERY

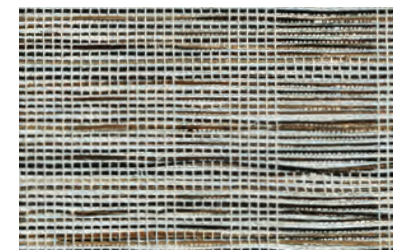
Paying homage to Bauhaus textile designer Anni Albers, this weave balances the structure of industry with a natural, organic sensibility. Rectangles and squares jacquard-handloomed of textural ramie and multicolored warp fibers form a complex geometry that conjures images of newsprint on a page.



LEAM34-09 Newsprint



Price Group: 5 | Max Width: 100"
Available Styles: Roman, Top Treatment



LEAM33-66 Tortoise

STITCH

Stitch balances the linear architecture of the Bauhaus with the soft, natural appeal of Japanese designs. Multicolored abaca is freely hand-placed through an orderly framework of jacquard hand-loomed ramie, creating a compelling play of tension and texture and a subtle sense of movement.

Price Group: 5 | Max Width: 100"
Available Styles: Roman, Top Treatment

Shown: LEAM33-66 Stitch – Tortoise, Old Style Roman
WTS By-the-Panel: Sconce



INTERWOVEN

Playing with the drama of light and dark, edge-cut reeds fade in and out of the neutral ground for a unique chiaroscuro effect.



PATHWAYS

Stripes are the hallmark detail in this design of exquisite gauzy weaves. Presented either as open or feathered stripes.

LE1032 Namale



LE1030 Vatulele



LE1024 Hutan



LE1020 Awan



LE1057 Seychelles



LE1056 Camaca



GLISTEN

A delicate accent of silvery filaments infuses this design with metallic that sparkles under incandescent lighting.



LE1403 Aura

No Roller



LE1421 Calcite



LE1423 Nautilus

Price Group: 4 | Max Width: 180"
Available Styles: Roman, Roller, Top Treatment
Shown: LE1421 Glisten - Calcite, Old Style Roman



TISSAGE

Inspired by horsehair weaving traditions, layers of chestnut, grey, caramel and cocoa are woven for a rich texture. Perfect for dramatic shading statements.



LE1218 Cremello



LE1239 Dapple



LE1242 Arabian



LE1257 Halus



LE1255 Sorrel





ERINN V.

Valencich's iconic aesthetic embodies the classic California lifestyle, characterized by impeccable craftsmanship and luxe livability. In this collection, she offers a versatile assortment of neutral windowcoverings, perfect for modernizing or warming up any home.



DOCKSIDE

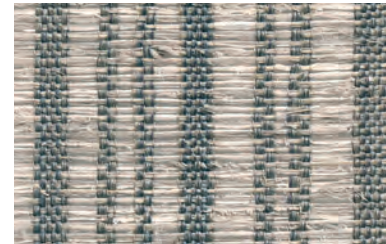
Drawing inspiration from picturesque docks found along the West Coast, Dockside's variegated stripes descend the relaxed ramie weave, evoking the profile of a pier and producing a play of texture and tension against the tonal, open ground.



LEE52-03 Breakwater



LEE52-09 Sandbar



LEE52-36 Cove



LEE52-87 Jetty



Price Group: 5 | Max Width: 180"
Available Styles: Roman, Top Treatment



LEE51-03 Swell



LEE51-06 Tide



LEE51-09 Breaker

WHITECAPS

Evocative of waves breaking on the seashore, refined ramie is woven with richly dimensional ramie slubs that ebb and flow across the canvas, producing an artful, abstract pattern conjuring the look of cresting whitecaps.



LEE51-36 Surf



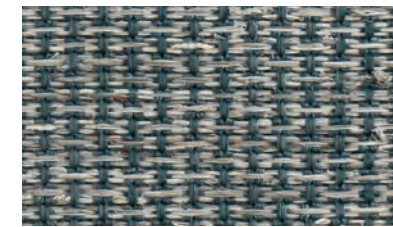
LEE50-03 Sail



LEE50-09 Sanddab



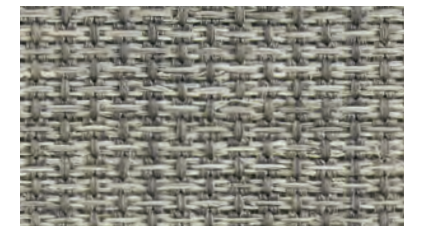
LEE50-12 Halyard



LEE50-57 Ocean

AT SEA

Inspired by traditional fishing nets, At Sea features an open weave hand loomed from natural palm and ramie fibers. Rendered in a range of coastal hues, the design's rhythmic grid pattern gives the textural tableaux a sense of structure that suits formal and informal settings alike.



LEE50-60 Reef

Price Group: 5 | Max Width: 180"
Available Styles: Roman, Top Treatment
Shown: LEE51-03 Whitecaps - Swell, Old Style Roman

Price Group: 5 | Max Width: 120"
Available Styles: Roman, Top Treatment





GLIMMER

This lustrous fine weave is ethereal, almost weightless, accented with micro hand knots that inject a pared-down luxe aesthetic.



LE1051 Tulle



LE1003 Shantung



LE1303 Tamin



LE1360 Zanella





Credenza courtesy - The Joinery



JAZZ

Inspired by the visual rhythm of classical guitar strings, the Jazz series imbues the tonal qualities of a bygone era, yet leans toward the future.



LE4003 Arpeggio



LE4006 Tremolo



LE4021 Bridge



LE4060 Fusion



LE4045 Staccato



LE4087 Legato

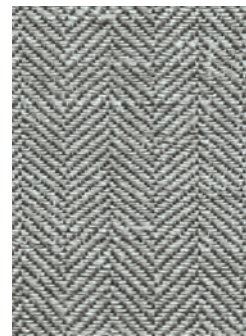
Price Group: 4 | Max Width: 180"
Available Styles: Roman, Roller, Top Treatment
Shown: LE4087 Jazz - Legato, Roller Style with Flat Valance and Newton



LEMH506-21 Kindling



LEMH506-36 Cinder



LEMH506-60 Smoke

NEW

HERRINGBONE

Inspired by modern Americana and rustic alpine settings, this design is reminiscent of iconic camping blankets. Ramie is handwoven in a herringbone pattern that resembles miniature mountain peaks and rendered in an earthy tone-on-tone palette for visual depth and versatile style.

MAX HUMPHREY

Recognized as a design change-maker and known for his trademark lived-in layered look, Humphrey's collection celebrates modern Americana with a nod to nostalgia and a fresh take on classic prints and patterns rendered in Hartmann&Forbes' handwoven natural textiles.





GINGHAM

Humphrey reimagines this traditional gingham check as a versatile neutral. Its simple, medium-scale motif is loomed of natural ramie fibers, creating subtle variations in each square that soften the geometric grid and highlight its handcrafted quality. The weft fibers are dyed to match the warp, infusing the two-tone pattern with graphic impact and visual dimension.



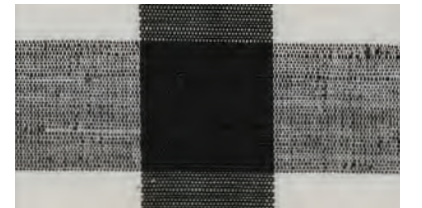
LEMH500-36 Gray **NEW**



LEMH500-21 Gold



LEMH500-57 Blue **NEW**

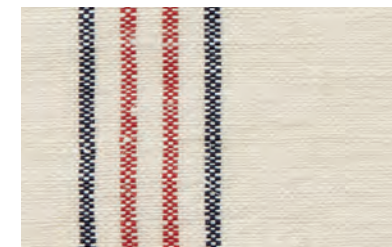


LEMH500-87 Black

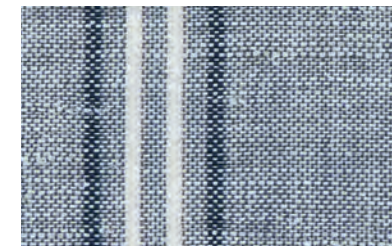
Price Group: 5 | Max Width: 180"
Available Styles: Roman, Top Treatment

GRAIN SACK

Inspired by vintage grain sacks, this series elevates the humble carryall to a nostalgic, handcrafted design. The sturdy ramie weave is accented with slender stripes of red, white or blue against a denim or natural ground, evoking a quintessential Americana mood in a fresh format.



LEMH502-06 Natural



LEMH502-57 Denim



Price Group: 5 | Max Width: 180"
Available Styles: Roman, Roller, Top Treatment
Shown: LEMH500-87 Gingham - Black, Old Style Roman



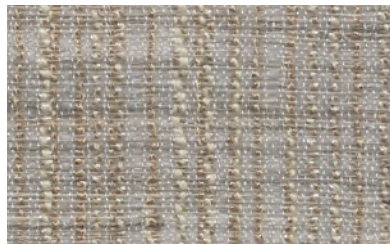
LE3312 Charisma



LE3303 Spirit



LE3309 Mystique



LE3315 Karma



LE3387 Chakra

AURA

A complex design with a spirited sensibility, this refined weave creates a gentle and meditative atmosphere.



Price Group: 4 | Max Width: 180"
Available Styles: Roman, Roller, Top Treatment

Shown: LE3387 Aura – Chakra, Roller with Flat Valance and Newton
EC100-06 ECO 100 – Calcite, Rollershade

TARTAN

Artisans masterfully guide shuttles wound with handspun ramie, in variegated thicknesses, through a composition of colored threads to achieve this haberdashery-inspired tartan pattern. The occasional appearance of hand-tied knots enhances the design's tactile richness and approachability.



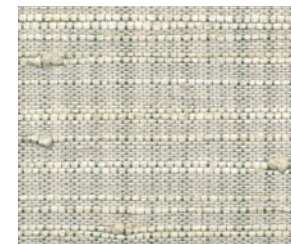
LE2203 Whitecap



LE2206 Woolen **NEW**



LE2236 Loch **NEW**



LE2215 Briarwood



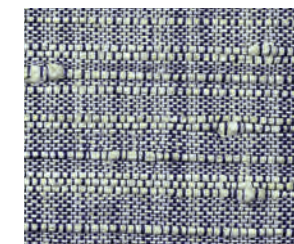
LE2212 Sandle



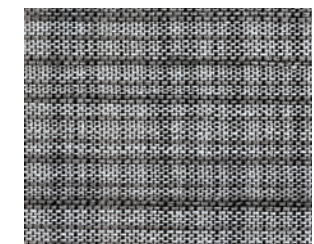
LE2209 Highland **NEW**



LE2221 Whisky **NEW**



LE2257 Lapis



LE2260 Cobblestone



FUNGI

Meticulously hand-placed Mendong flowers distinguish this design. Woven of weighty ramie, individual flowers are inserted into the weft, creating a series of dark slubby streaks that recall the frilly edge of a mushroom cap sprouting from the forest floor.



LELK40-06 Mushroom



CENOTE

Long, hanging vines suspended over Yucatan sinkholes served as inspiration for this earthy yet elegant series. Refined abaca is woven with gleaming gold, silver, and copper threads, producing textural striations that conjure the rich dimension and natural colors of these underground caves.



LELK41-21 Oro



LISA KANNING

Kanning's love of organic shapes and materials informs her collection for Hartmann&Forbes. Layered window and wall coverings are detailed with intricate patterns that mimic those found in nature while maintaining a sophisticated sensibility that suits a range of settings.

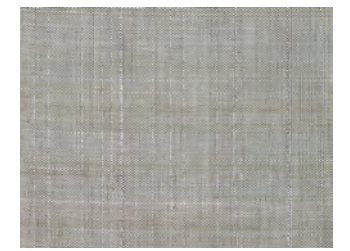


ZENITH

Slender metallic stripes shimmer against a field of sheer banana fiber in this series. The delicate tone-on-tone design is woven with dimensional traces of copper or silver that gracefully descend the fabric, their vertical trajectory evoking a streaking star in the night sky.



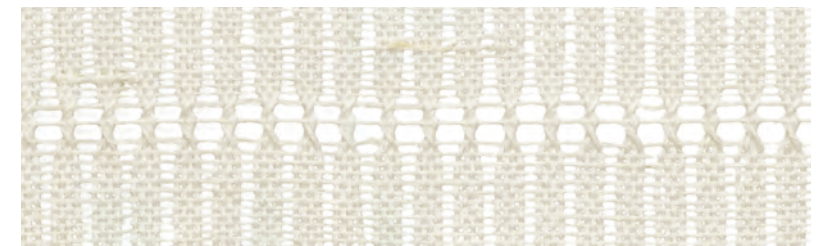
LELK44-06 Halcyon



LELK44-60 Vapor



LE2336 Gris



LE2303 Blanc



LE2306 Naturel

MACRAME

A bohemian expression with a free spirit, this uniquely woven natural textile is unassumingly elegant, offering a casual charm in its soft, muted color palette.

Price Group: 4 | Max Width: 120"
Available Styles: Roman, Roller, Top Treatment
Shown: LE2336 Macrame – Gris, Old Style Roman



CROSSHATCH

A chic interpretation of chambray fabric, this series is woven with palm fibers and Italian-inspired spun yarn that shows evidence of its innovative construction.



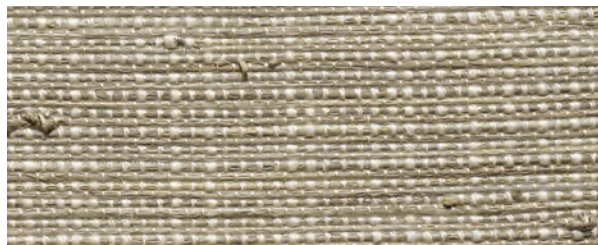
LE1606 Natural



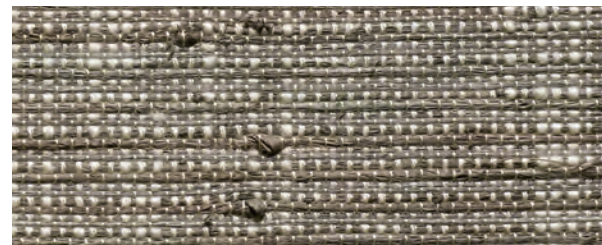
LE1609 Wheat



LE1618 Flax



LE1639 Dust



LE1660 Thunder



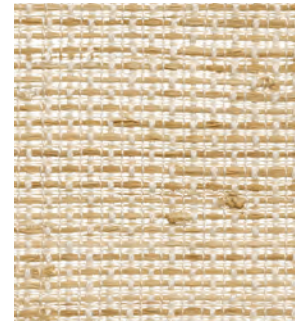
CITY STITCH

This handwoven design is a modern interpretation based on ancient Japanese Sashiko stitching from the Edo period. A unique weave that combines functional embroidery with meticulous, decorative stitching to create a sophisticated mix of texture, color and pattern.

features a 2" plain woven border



LEMS71-06 Ivory



LEMS71-09 Limestone



LEMS71-72 Ruby



LEMS71-57 Lapis



LEMS71-54 Malachite

Price Group: 5 | Max Width: 180"
Available Styles: Roman, Top Treatment

Shown: LEMS71-54 City Stitch – Malachite, Traditional Style Roman
WLM575-54 Kamakura – Malachite, Wallcovering



LEMS76-30 Linden



LEMS76-54 Sage



LEMS76-55 Teal

JACOB STRIPE

For Jacob Stripe, lustrous, textural ramie is handwoven in a variegated-stripe pattern that recalls the charming scalloped shop awnings found in French seaside villages. Its relaxed, sun-washed look and soft-hued palette provide the perfect complement to the Madeleine wallcovering.

Price Group: 5 | Max Width: 180"
Available Styles: Roman, Roller, Top Treatment



MICHAEL S. SMITH

Recognized as one of the design industry's most respected talents, Michael S. Smith presents a fresh, globally-inspired collection that combines his signature blend of historically referenced patterns in bold, simple colors with the textural detailing from Hartmann&Forbes.

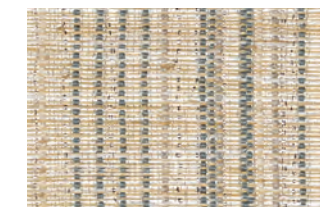


CASCADE

An elegant and sophisticated use of the traditional striation pattern, employing soft colors of handwoven threads. The vertical stitch pattern is asymmetrical and highlighted by subtle, but glamorous metallic strands.



LEMS70-12 Ivory

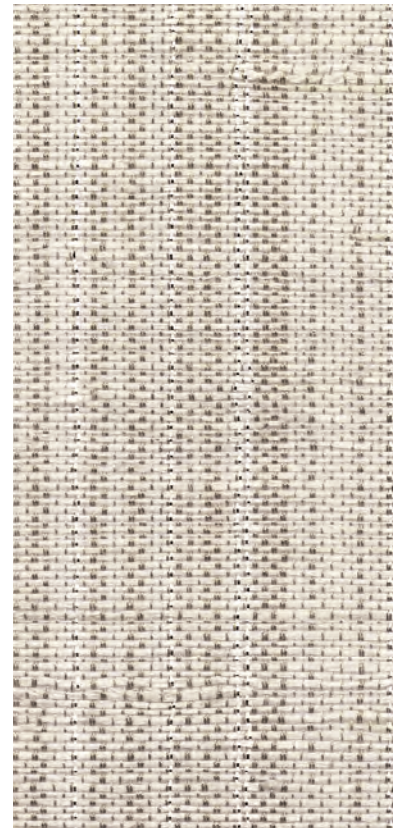


LEMS70-55 Malachite



LEMS70-51 Limestone

Price Group: 5 | Max Width: 180"
Available Styles: Roman, Roller, Top Treatment



LE2012 Dawn



TABARET

Influenced by vintage European linen, this handwoven textile of ramie fiber offers subtle variegated stripes in nature's hues, creating a harmonious mix of status and pedigree.



LE2630 Lawn



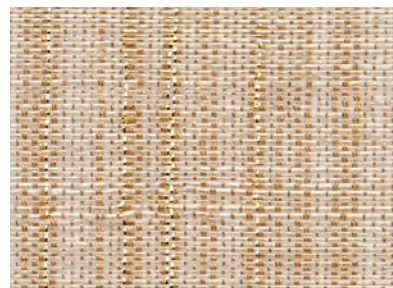
LE2660 Greylake



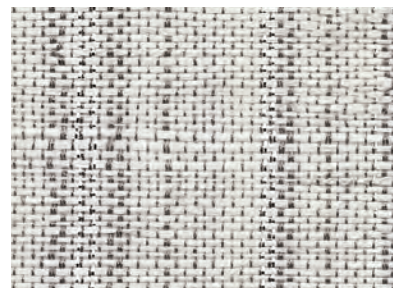
LE2657 Lagoon



LE2645 Brownstone



LE2021 Sunrise



LE2039 Dusk

RAINFALL

To create a pleasant variance, softly reflective metallic and colored warp threads dance with white ramie weft fibers in harmonious, handwoven choreography.



Table courtesy – The Joinery | Chairs courtesy – Tiffany Home Design

RHYTHM

Inspired by indigenous music tradition and its melodic essence, this artisanal textile series is handwoven using original foot-treadle looms. This intensive process results in patterned compositions that add a vibe of tribal heritage to an interior space.



LE2912 Beat



LE2960 Pulse



LE2712 Chords



LE2739 Keys



LE2781 Notes

WICKER

The legacy of hand-weaving wicker basketry and furnishings dates back to the ancient Mesopotamians. Inspired by this tradition, Wicker offers a superior balance of woven textures and natural hues.



LE4106 Cane



LE4136 Willow



LE4187 Rattan

Price Group: 4 | Max Width: 120"
Available Styles: Roman, Roller, Top Treatment
Shown: LE4136 Wicker – Willow, Old Style Roman

Price Group: 4 | Max Width: 120"
Available Styles: Roman, Roller, Top Treatment



ILLUMINATION

A minimalist weave with subtle sheen for nonchalant luxury.
Layered shadings of ivory and misty grey offer elegance and beauty.

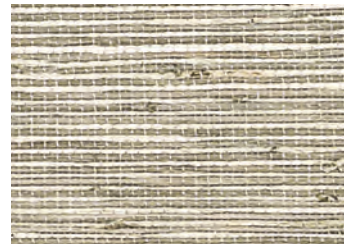


LE1301 Barege

No Roller



LE1292 Pasir



LE1064 Madras



LE1284 Bishan





BALDWIN STRIPE

An open weave of yarns and dyed ramie form a relaxed rectangular motif. Its intricate warp and weft lending depth and detail to the interior geometry. Artfully accented with bands of color in a subdued, subtle palette of mist and cream, the vertical stripes add layers of tonal beauty to the gauzy ground.



LEJP23-06 Cream



LEJP23-36 Mist

Price Group: 5 | Max Width: 120"
Available Styles: Roman, Top Treatment



J. RANDALL POWERS

Celebrated for his classic yet cosmopolitan style, the J. Randall Powers Collection reveals the artisanal quality of Hartmann&Forbes' handwoven textiles combined with Powers' penchant for tailored patterns with a playful twist.



APSLEY CHECK

Clean-lined and classic, Apsley Check is defined by small, even squares that recall the timeless Shepherd's check. Woven of refined ramie, this weave evokes the textural, lightweight hand of linen and pairs beautifully with the geometric Christopher Check series.



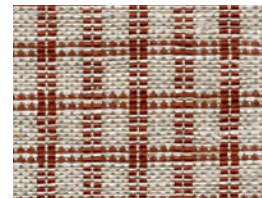
LEJP20-18 Taupe



LEJP20-03 White



LEJP20-33 Slate



LEJP20-72 Brick

Price Group: 5 | Max Width: 180"
Available Styles: Roman, Roller, Top Treatment

CHRISTOPHER CHECK

A medium check of contrasting colors creates a crisp windowpane pattern. Ramie fibers are framed in bold hues, imparting a graphic punch that enlivens the rigorous geometry. Sophisticated yet friendly, it suits formal and informal spaces alike.



LEJP21-72 Brick



LEJP21-33 Slate



LEJP21-18 Taupe

Price Group: 5 | Max Width: 180"
Available Styles: Roman, Top Treatment

Shown: LEJP21-72 Christopher Check – Brick, Old Style Roman
WLJP24-72 Christopher Check – Brick, Wallcovering



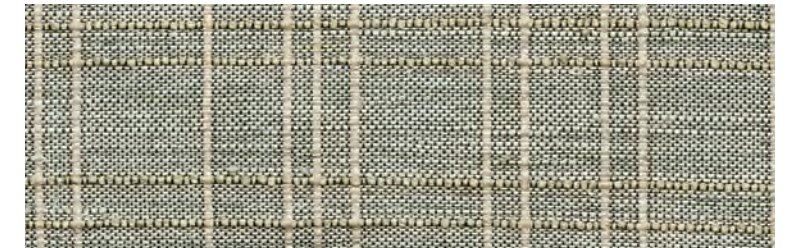
Rug courtesy - Tufenkian Artisan Carpets

JG PLAID

A fresh take on traditional plaid, this weave is intricately loomed of refined ramie. Strong crisscrossing pencil stripes in an irregular sequence form an intriguing dimensional look. Hand-tied knots, a woven edge and woodland palette of moss and linen play relaxed counterpoint to the structured sensibility.



LEJP22-12 Moss on Linen



LEJP22-78 Linen on Moss

Price Group: 5 | Max Width: 180"
Available Styles: Roman, Top Treatment

WINDSOR

Corded French textiles inspired this transitional series by J. Randall Powers. Windsor's tightly woven ramie ground is detailed with yarns that are individually twisted by hand into pencil lines. Their two-tone palette and horizontal relief offer a fresh take on a traditional striped design.



LEJP26-33 Slate



LEJP26-15 Taupe



LEJP26-09 Cognac

Price Group: 5 | Max Width: 100"
Available Styles: Roman, Top Treatment

Shown: LEJP22-12 JG Plaid - Moss on Linen, Old Style Roman
WLJP25-78 JG Plaid - Linen on Moss, Wallcovering



INTERWOVEN II

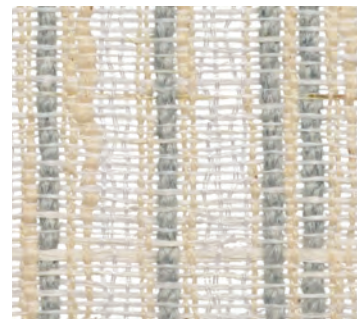
This intricate open weave evokes contemplation and relaxation with its nuanced palm, ramie and soft yarn textures.



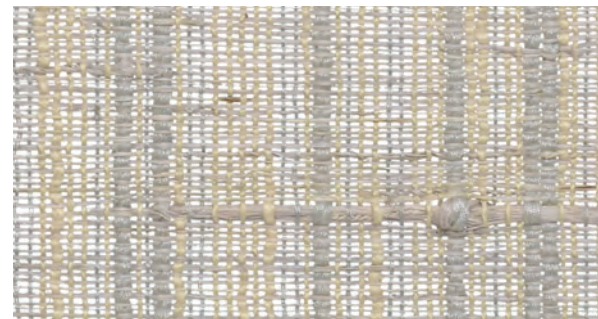
LE2521 Delmar



LE2503 Imperial



LE2515 Solana



LE2536 Clearwater



LE1703 Wrafton



LE1100 Cassimere



LE1805 Buckskin

THATCH

The beautiful texture of a thatched roof is the inspiration for this series, a medium-weight textile offering privacy and a casual point of view to an interior.





INTERBRAID

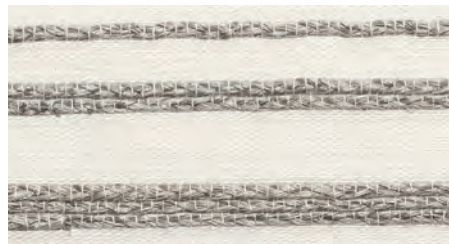
Intricately handwoven ramie braids in pale grey and golden wheat delicately rise above a finely woven field. The unique horizontal pattern has a gentle rhythm which lends a natural restfulness and comfort to a room.



LE1906 Blonde



LE1903 Champagne



LE1939 Ash



LE1960 Heather

MESA

Inspired by Southwestern weaving traditions, palm and ramie fibers in modern earth tones mingle with hand-placed water hyacinth strips for textural dimension. This tapestry-like design adds luxurious layers of warmth and artistic beauty to any interior.



LE2121 Adobe



LE2115 Pueblo





EARTHEN

Handwoven of vetiver, a hearty organic root fiber with a warm woody scent, this weave is grounded and earthy offering interiors a complex textural identity that is exotic, yet modern.



LE2409 Root



LE2439 Stem



LE2487 Seed

Price Group: 4 | Max Width: 180"
Available Styles: Roman, Top Treatment
Shown: LE2409 Earthen - Root, Old Style Roman



CABANA

Densely-woven contrasting fibers in subtle hues create a relaxed and approachable weave in a sand tone that evokes a laid-back island vibe.



LE1130 Palm



SHALE

Referencing the raw beauty of high desert geology, naturalistic color bands are stacked to achieve a strié effect. Arrowroot fibers in shades of desert sand combine for tonal beauty.

WOODSTOCK

A naturalistic design in deep woodland colors of walnut, moss and straw. This weave summons a cozy mountain feeling.



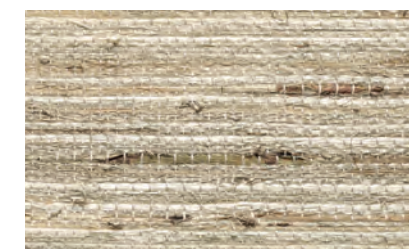
LE1169 Moorea



LE1512 Dune



LE1506 Sand



LE1530 Sage