

HARTMANN & FORBES

FALL | WINTER 2024

LISA KANNING

H&F STUDIO



“CREATIVITY
takes courage.”

~ Henri Matisse

AS THE VIBRANT HUES OF AUTUMN BEGIN TO PAINT THE LANDSCAPE, we are reminded of the endless inspiration nature provides. This fall, we are thrilled to unveil a new chapter in our journey, a testament to the ultimate creative expression and craftsmanship that defines Hartmann&Forbes.

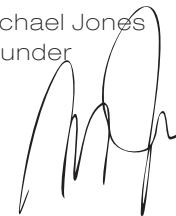
Once again we have had the profound pleasure of collaborating with the renowned designer, Lisa Kanning, whose eye for detail and passion for design have elevated our house to new heights. Lisa's extensive travels and keen understanding of diverse cultures have infused her latest collection with a sense of adventure and sophistication, capturing the essence of luxury and creativity.

In harmony with Lisa's visionary work, our H&F Studio is releasing new creations that embody our commitment to innovation and sustainability. These eco-performance and handwoven masterpieces tell a story, crafted with meticulous care and a deep reverence for nature.

This season, we invite you to explore the transformative power of natural design. Our new offerings, inspired by Lisa's journey and our collective desire to be at the forefront of both creativity and craft, are designed to create sanctuaries of beauty and tranquility.

We are immensely grateful for your continued partnership and support. Together, we are not just creating products; we are crafting experiences that inspire, elevate and restore.

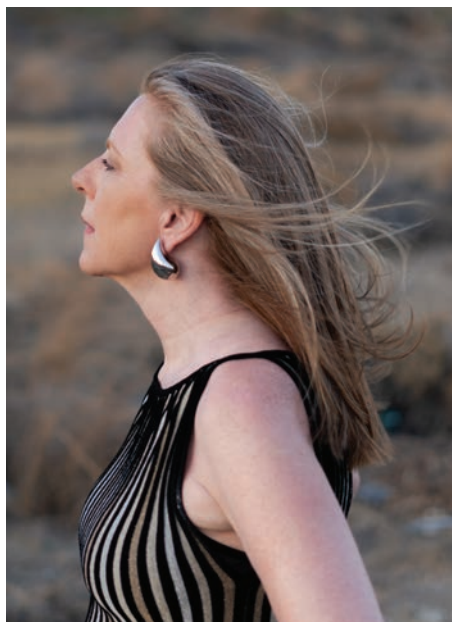
Yours In Nature,
~ Michael Jones
Founder



Tranquility and Euphoria
from the Greek Islands

"This collection of designs captures the tranquility and euphoria of the Greek islands, my personal haven. These islands offer a range from calm to invigorating, featuring brilliant sun, tranquil seas, vibrant colors, voluminous clouds and sculptural waves against muted landscapes of brush, sand and clay. Rich in history and marine life, they always evoke rejuvenation. The patterns reflect the literal and figurative movement of the islands' natural and historical beauty, defined by fluid design and intricate detail."

LISA KANNING





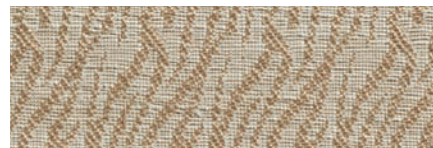
Woven-to-Size Grassweave
 OLD STYLE ROMAN SHADE
 LELK542-55 Kyma - Athena
 Natural Wallcovering
 WLLK540-55 Neptunia - Galano

KYMA + NEPTUNIA

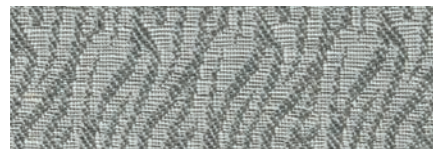
Greek splendor
 Jacquard-handloomed of ramie,
 KYMA evokes the rhythmic
 dance of the Aegean Sea and

the sculptural waves of the Cyclades. Paired with NEPTUNIA, which captures the gentle sway of seagrass embroidered on an earthy sisal ground.

Windowcovering - KYMA



LELK542-21 Ammos



LELK542-55 Athena

Wallcovering - NEPTUNIA



WLLK540-09 Prasino



WLLK540-55 Galano

NEPHELE + DELOS

Ancient inspiration

NEPHELE's jacquard-handloomed ramie design captures the celestial beauty of ethereal cloud formations, while DELOS reimagines the ornate intricacies of ancient Greek architecture, exquisitely embroidered on a sisal background.



Windowcovering – NEPHELE

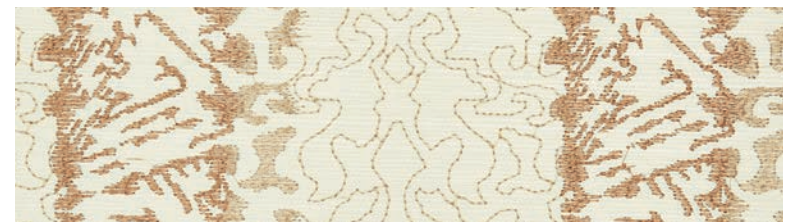


LELK543-21 Saj



LELK543-30 Hriso

Wallcovering – DELOS



WLLK541-06 Ammou



WLLK541-60 Asime



H&F STUDIO

STUDIO CONCEPTS

Delve into the art of refined elegance with our latest limited-edition design. Each piece in this iconic collection is a testament to our unwavering dedication to natural design and timeless sophistication.

GRASSWEAVE

Introducing an exquisite palette of warm hues to our meticulously handwoven Tartan, Ethereal and Essence series. This season, we also unveil a hand-loomed, Hawaiian-inspired design, adding an exclusive top treatment that epitomizes distinctive natural beauty.

ECOWEAVE

Discover our new Ecoweave series — an embodiment of eco-friendly, low-impact luxury. This range of earthy colorways complements our natural woven collections, offering a harmonious blend of sustainability and elegance.



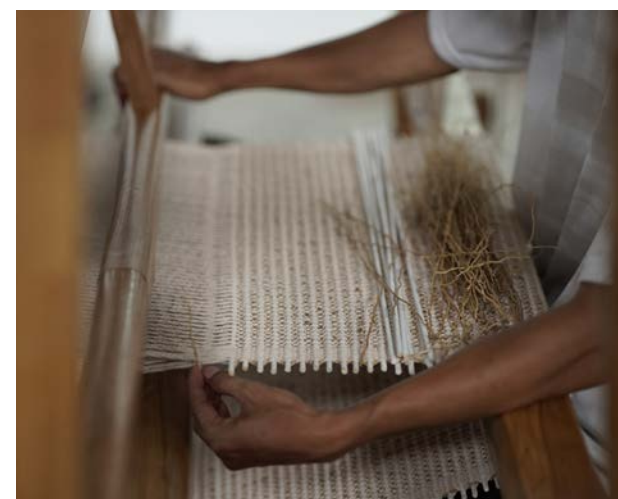
studio
concepts **RIBBON**
A monochromatic composition

Organic allure meets elegant refinement in this design, hand-loomed from airy banana fiber. Lustrous ribbons stripe the delicate weave, adding textural dimension and a touch of glamour to the monochromatic composition.

LE6806 Ribbon

ULANA *An organic oasis*

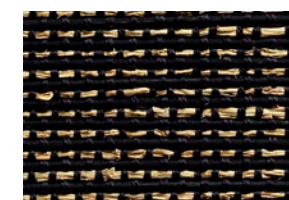
Named after the Hawaiian word to braid, ULANA is hand-loomed from thick warp yarns, intertwined with hand-placed pine and aromatic vetiver. Finished with an organic looped edge, its texture offers a refined casual aesthetic, embodying nature's serene elegance.



LE6603 Ke'oke'o



LE6609 Hoa



LE6687 Ele'ele

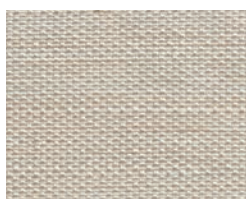
ETHEREAL, TARTAN & ESSENCE

Warm tranquility

New colorways inspired by nature's earthy hues, bringing an aura of warmth and tranquil beauty to your surroundings.



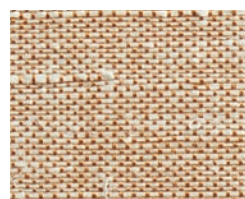
LE5306 Ethereal - Veil



LE5315 Ethereal - Brume



LE5251 Ethereal - Feathery shown



LE3021 Essence - Maple shown



LE2206 Tartan - Woolen



LE2236 Tartan - Loch



LE2209 Tartan - Highland shown



LE2221 Tartan - Whisky



PE609-12 Tender Taupe



PE609-09 Reposed Sand

REFLECTION Refined serenity

Handwoven from lightweight wood pulp, Reflection offers a rich texture that exudes refinement and serenity. The delicate interplay of threads blends traditional craftsmanship with contemporary aesthetics.

ECO 103 Green performance

Artfully combining performance fibers in refined and nubby textures, this design achieves exceptional quality and a natural, woven aesthetic. Free of harmful chemicals and Oeko-Tex Standard 100 Certified, this translucent rollershade elegantly filters light in a palette of earthy desert-inspired colorways.



EC103-32 Agave

EC103-18 Acacia

EC103-12 Saguaro

EC103-15 Aloe

EC103-03 Yucca

NATURAL
WINDOWCOVERINGS,
WALLCOVERINGS
& TEXTILES
HANDCRAFTED
FOR THE TRADE
IN EDITIONS OF ONE



PO Box 1149 | Tualatin, OR 97062 | hartmannforbes.com
t 503.692.9313 | 888.582.8780 | f 503.692.9315



Printed with zero VOC/
low energy and UV inks

©2024 HARTMANN&FORBES, INC