

HARTMANN & FORBES

STUDIO CONCEPTS





STUDIO CONCEPTS

ARCHETYPE WEAVES IN THE MAKING

Founded by artistic curiosity, the Studio Concepts collection is a testament to artistic ingenuity and innovation. Handwoven using special techniques and exotic fibers, these limited-edition designs push the boundaries of traditional weaving, resulting in a showcase of creativity and mastery.



NEW

LE6509 KUTA

Traditional basketry from Bali's Kuta Beach inspired this design. Hand-placed strands of aromatic vetiver set off with twisted yarn, woven with ramie rivulets, produce a richly textural landscape showcasing the fibers' rustic quality and artisanal character.



Price Group: 4 | Max Width: 100"
Available Styles: Roman, Top Treatment
Shown: LE6509 Kuta, Old Style Roman

LE4715 MELANGE



A multi-hued mix of fibers marks the Melange design. Ramie, palm, and black abaca are skillfully twisted together to evoke the heathered look of eagle feathers. The weave – distinctive and dense – combines natural colors to create a slanted, impressionistic pattern.

Price Group: 4 | Max Width: 120"
Available Styles: Roman, Top Treatment

A thick warp of double-twisted palm yarns yields a textural landscape that conjures traditional Japanese mats. Hand-knotted fibers in two earthy colors combine to form a tonal grid pattern, while allowing light to pass through like a dimensional screen.

LE4918 TATAMI



Price Group: 4 | Max Width: 180"
Available Styles: Roman, Top Treatment

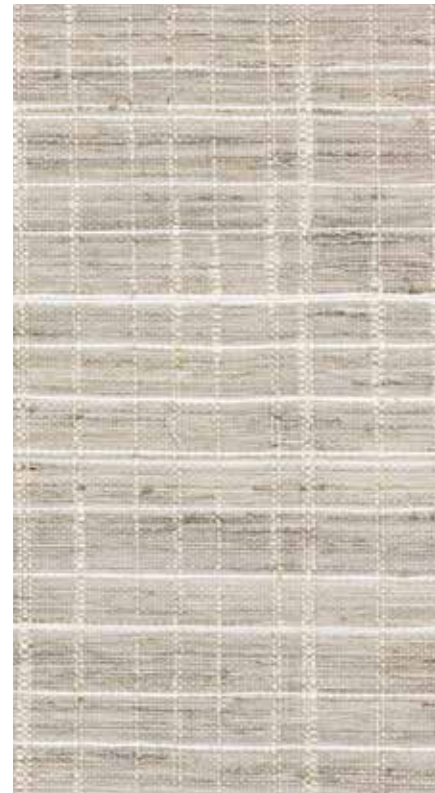


NEW

LE6806 RIBBON

Natural beauty meets elegant refinement with this design hand-loomed from airy banana fiber. Lustrous ribbons stripe the delicate weave, lending textural dimension and a hint of glamour to the monochromatic composition.





LE4339 TWEED

Created of ramie and interweaving tones of refined gray and neutral warps, this openly checked pattern is a light and modern approach to historical tweed.

Price Group: 4 | Max Width: 180"
Available Styles: Roman, Roller, Top Treatment

Created in honor of the historical 18th century Tattersall blanket pattern, this modern perspective is composed of interwoven indigo warp threads and ramie, highlighting strong vertical lines with contrasting neutrals.

LE4481 TATTERSALL



Price Group: 4 | Max Width: 180"
Available Styles: Roman, Roller, Top Treatment

LE4642 GROOVE

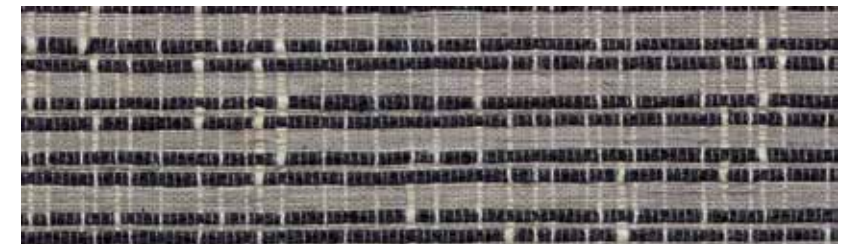


Lending a vibrant and earthy uptake on mid-century modern, this upbeat and textural design of abaca fiber is complemented with hand-placed water hyacinth and a continuous warp thread of woody neutrals.

Price Group: 4 | Max Width: 180"
Available Styles: Roman, Roller, Top Treatment

Inspired by centuries-old traditional African hand braiding, this textural pattern is punctuated by intricately-braided dark ramie and enlightened by playful cream warp threads.

LE4587 CABLE



Price Group: 4 | Max Width: 180"
Available Styles: Roman, Top Treatment

Meticulously jacquard-handloomed, this limited-edition series lends an artisanal look to an interior. Dimensional strands of natural banana fiber are braided by hand and woven into a ramie ground in an undulating pattern, the complex layering of textural materials yielding rich, organic beauty.

LE6015 PLAIT



Price Group: 4 | Max Width: 100"
Available Styles: Roman, Top Treatment

LE4842 HAVANA



Price Group: 4 | Max Width: 180"
Available Styles: Roman, Top Treatment

Defined by distinctive plaid stripes enriched with an intricate check pattern adding depth and definition against a beige backdrop, Havana is loomed with hand-placed fibers of black abaca and thick, textural ramie. The sensibility is at once relaxed and tailored.

Masterfully interwoven with a mix of thick and thin ramie fibers creating a variegated palette, Pima features a freeform composition of subtle, open stripes. Elegant, white striations are reminiscent of cotton fields, which enhance the tactile richness and rustic-meets-refined feel.

LE5051 PIMA



Price Group: 4 | Max Width: 180"
Available Styles: Roman, Roller, Top Treatment



LE6109 CREEL



Rugged wicker baskets used by anglers to carry fish inspired this design. Woven on a jacquard-handloom, Creel's cream-colored ramie ground is punctuated with hand-placed contrasting patches of soft-brown water hyacinth fibers in a rhythmic interplay of texture and tone.

Price Group: 4 | Max Width: 100"
Available Styles: Roman, Top Treatment
Shown: LE6109 Creel, Old Style Roman