

HARTMANN & FORBES

SOFT NATURAL FABRIC





SOFT NATURAL FABRIC

RELAXED AND EARTHY BELGIUM LINENS

A fresh translation of textural classics, our Soft Natural Fabric collection offers hints of the exotic while remaining grounded in the modern moment. Loomed in some of the world's oldest and most revered textile mills, fibers are carefully spun and dyed to a rich and earthy color palette.

ERTHEWEAVE





BARGELLO

Named for the timeless needlepoint style that inspired it, Bargello exudes a kinetic quality and earthy elegance. Featuring a stepped, zigzag design of soft, premium linen, the stitches sweep across tonal layers for an artfully shaded effect that lends the look of flames shifting in the wind.



EW152-32 Menta



EW152-03 Perla



EW152-15 Grigio



EW152-12 Cachi

RIBBED

With a raised pinstripe pattern, this sheer linen brings casual chic to an interior. The multi-color thread detail offers a dynamic and differentiated look.



EW105-06 Buff



EW105-60 Denim

Price Group: 4 | Max Seamless Width: 114"
Available Styles: Roman, Top Treatment
Shown: EW152-15 Bargello – Grigio, Old Style Roman
WL426-12 Aleutian – Alpenglow, Wallcovering



SAHARA

Resembling windblown desert sands, this luxury linen exhibits a delicate rippling of soft color favoring the natural beauty of the desert. (shown railroaded)



EW150-03 Salt



EW150-06 Dune



EW150-09 Sandwash



EW150-12 Plateau



EW150-57 Oasis



EW150-72 Sundown



BRUSHED

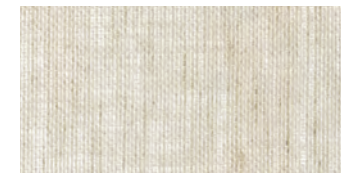
A soft textured sheer linen milled in the Belgium countryside. Offered in a palette of neutrals to work harmoniously in the home and to coordinate with our natural woven shades.



EW151-03 Amaryllis



EW151-06 Lily



EW151-09 Foxtail



EW151-15 Silverdust



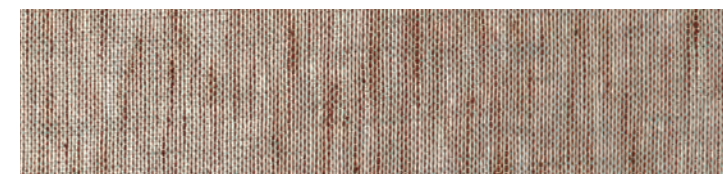
EW151-27 Millet



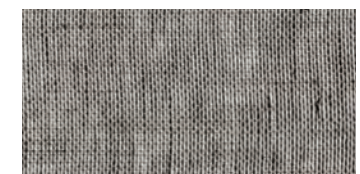
EW151-36 Thistle



EW151-39 Seaholly



EW151-45 Allspice



EW151-87 Hollyhock



FIELDS

A perfect expression of harmony in design. This linen beautifully blends two distinct textures into one evocative pattern. Gentle earth tones and visual texture from vertical warp fibers evoke images of undulating flax fields at harvest.



EW148-06 Loam



EW148-12 Earthen



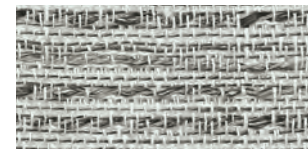
EW148-39 Root



EW148-51 Bloom



EW148-57 Petal



EW148-84 Peat



WEATHERED

The natural stone-washed palette of this soft, medium-weight linen delivers an easygoing attitude embodying a lived-in, carefree lifestyle.



EW104-12 Limestone



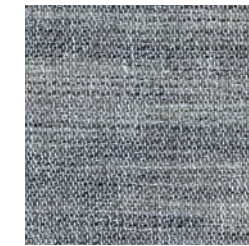
EW104-18 Sandstone



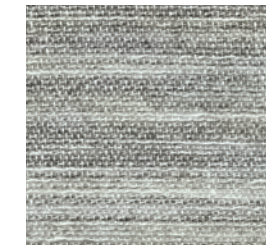
EW104-32 Moonstone



EW104-30 Greenstone



EW104-57 Bluestone



EW104-60 Graystone



EW145s Sao' Luis



EW145m Marcelo

PLAID

A traditional windowpane check pattern is masterfully adapted in a striking linen weave. A heavy, coarse thread woven in the weft, gives this fabric tactile interest and contemporary character.

Price Group: 4 | Max Seamless Width: 50"
Available Styles: Roman, Top Treatment

SHEER STRIPE

An open-weave striping adds visual interest in this sophisticated sheer linen. Offered in a contemporary neutral palette with tonal heathering.



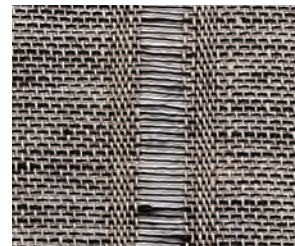
EW144b Balem



EW144o Ounda



EW144n Natal



EW144r Recliffe



Price Group: 3 | Max Seamless Width: 50"
Available Styles: Roman, Top Treatment

Shown: EW144n Sheer Stripe – Natal, By-the-Yard
LE1284 Illumination – Bishan, Old Style Roman



MIRAGE

Heat reflecting from the barren desert floor delivers playful light refraction. The organic pattern of the Mirage Series captures this seemingly random effect.

Table courtesy – O'Hara Studio



EW149-03 Glint



EW149-09 Glow



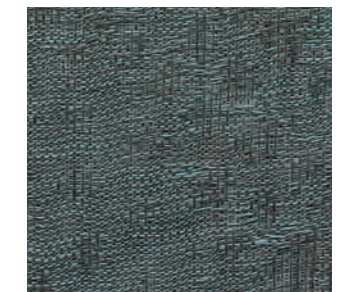
EW149-12 Luminous



EW149-30 Echo



EW149-36 Illusion



EW149-79 Phantom

Price Group: 4 | Max Seamless Width: 114"
Available Styles: Roman, Top Treatment

Shown: EW149-30 Mirage – Echo, By-the-Yard
LE3130 Essence – Bisque, Rollerfold Style
WL424-12 Baja – Desert Sands, Wallcovering

CORDS

Elegance with a rustic twist, this design features tufted cords artistically embroidered onto a heavy linen ground. As wearable as fashion, this contemporary textile will dress any window in chic style.



EW109-15 Canvas



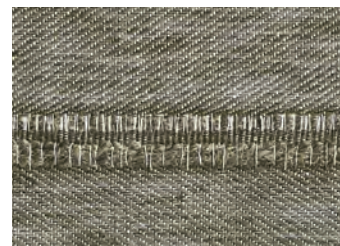
EW109-06 Cotton



EW109-12 Burlap



EW109-21 Cloth



EW109-54 Knapsack

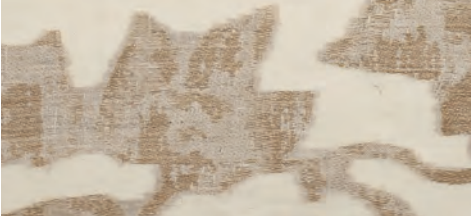


Furnishings courtesy - Tiffany Home Design | Rug courtesy - Tufenkian Artisan Carpets



ARBORETUM

With an elegant, vintage feel, this sheer design layers a charming abstract leaf motif on a warm cream backdrop.



EW108-21 Bask



EW108-60 Shade

Price Group: 5 | Max Seamless Width: 114"
Available Styles: Roman, Top Treatment



STRIE

An inspired melange of linen threads are loomed into an elegant heathered weave. This sheer linen has a chic quality that elevates the style of a room.



GEOMETRY

A breezy lightweight linen that captures a modern geometric vibe. Offered in misty neutrals and blue, this hypnotic pattern of abstract ogees comes together to make a big impact.

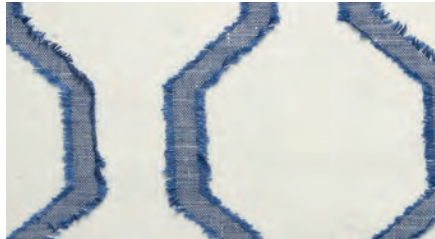
EW259 Contorno



EW257 Angulo

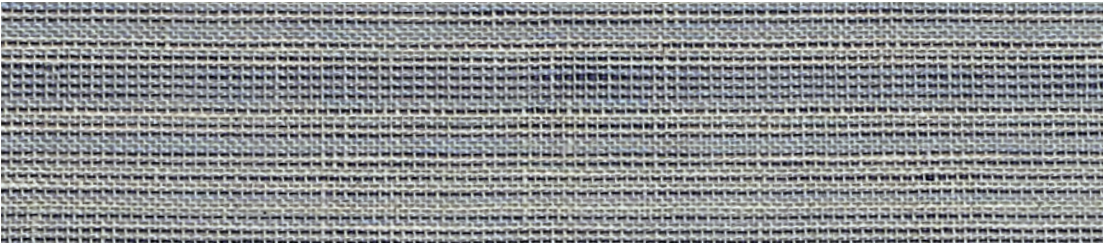


EW256 Praca



EW258 Moldar

Price Group: 5 | Max Seamless Width: 53"
Available Styles: Roman, Top Treatment



EW147 Lagoa
Max Seamless Width: 55"

PG4



EW141a Andari
Max Seamless Width: 50"

PG3



EW141t Tijura
Max Seamless Width: 50"

PG3

Price Group: 3, 4 | Max Seamless Width: 50; 55"
Available Styles: Roman, Top Treatment