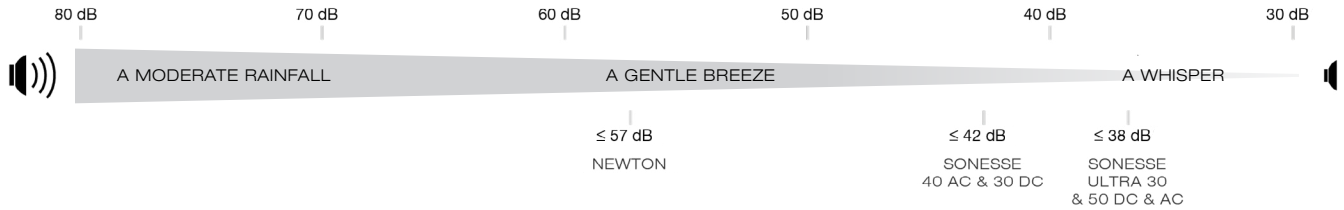




AUTOMATION MOTOR OFFERINGS

Automated shades operate where handcrafted traditions meet cutting-edge technology.

From automating a single window to an entire home, whether new construction, remodel or retrofit, we have motor and control solutions for any project.



NEWTON — Powered by Motionblinds

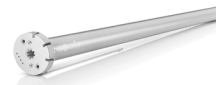
	NEWTON
Silence Level	≤ 57 dB
Min. Roman Shade Width	25.125"
Min. Roller Shade Width	24.75"
Min. Roman Shade Headrail Depth	2.25"
Max. Roller Shade Std. Bracket Diameter	3.25"
Max. Roller Shade Ext. Bracket Diameter	4.5"
Approximate Lift Capacity*	17lbs



Newton™

SONESSE WIREFREE — Powered by Somfy

	SONESSE ULTRA 30	SONESSE 28	SONESSE 28 EXT. BATTERY
Silence Level	≤ 38 dB	≤ 48 dB	≤ 48 dB
Min. Roman Shade Width	28"	24"	16.25"
Min. Roller Shade Width	27.625"	23.625"	15.875"
Min. Roman Headrail Depth	2.25"	2.25"	2.5"
Max. Roller Std. Bracket Diameter	3.25"	3.25"	3.25"
Max. Roller Ext. Bracket Diameter	4.5"	4.5"	4.5"
Approximate Lift Capacity*	17lbs	8lbs	8lbs



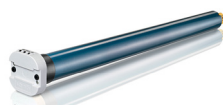
Sonesse® ULTRA 30



Sonesse® 28
w/external battery

SONESSE WIRED LOW VOLTAGE — Powered by Somfy

	SONESSE® ULTRA 50 DC	SONESSE® 30 DC
Silence Level	≤ 38 dB	≤ 42 dB
Min. Roman Shade Width	35.125"	20.125"
Min. Roller Shade Width	34.625"	19.75"
Min. Roman Shade Headrail Depth	3.5"	2.25"
Max. Roller Shade Std. Bracket Diameter	4.75"	3.25"
Max. Roller Shade Ext. Bracket Diameter	-	4.5"
Approximate Lift Capacity*	34lbs	17lbs



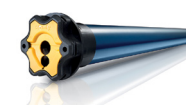
Sonesse® Ultra 50 DC



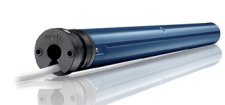
Sonesse® 30 DC

SONESSE WIRED LINE VOLTAGE — Powered by Somfy

	SONESSE® ULTRA 50 AC	SONESSE® 40 AC
Silence Level	≤ 38 dB	≤ 42 dB
Min. Roman Shade Width	35.75"	24.625"
Min. Roller Shade Width	35.25"	24.125"
Min. Roman Shade Headrail Depth	3.5"	3.5"
Max. Roller Shade Std. Bracket Diameter	4.25"	4.25"
Max. Roller Shade Ext. Bracket Diameter	4.75"	4.75"
Approximate Lift Capacity*	48lbs	34lbs



Sonesse® Ultra 50 AC



Sonesse® 40 AC

5 year warranty

*For reference only. Specific load capacity for all shades to be determined by H&F