



Natural Woven Shade
SUDARE STYLE



SUDARE STYLE

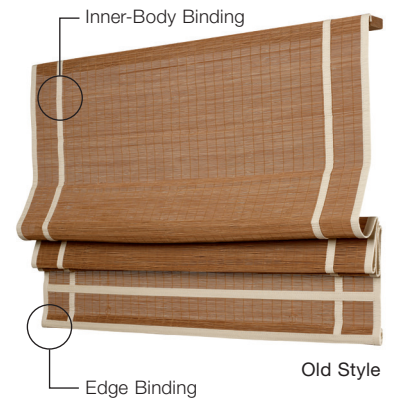
A fresh interpretation of a classical Japanese style, this shade blends modern roman-fold operation with a hand-sewn decorative bamboo binding.

DETAILS

- Crafted to chosen style specifications Old Style, Traditional Style or Splitview Style
- $\frac{5}{8}$ "W bamboo binding is sewn to the shade edges, bottom hem and the inner-body $3\frac{1}{2}$ " from sides and bottom
- Bottom hem dropped 4"L to showcase inner-body binding trim

DC DESIGN CONSIDERATIONS

- For wider shades, consider increasing the distance of the inner-body binding from the shade edge to maintain scale and proportion. Available up to 9" from edge
- COM trim available, must be submitted for pre-approval



AVAILABLE WEAVES — JUNSEI COLLECTION



CWMS83 Shiro **NEW**



CWMS81 Hinoki

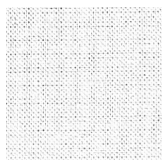


CWMS80 Matsu

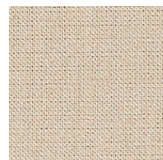


CWMS82 Tochi

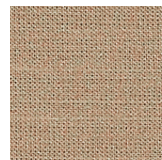
BAMBOO BINDING



801 Rice **NEW**



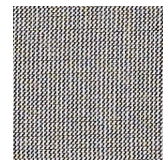
890 Ivory



830 Beechey



820 Ceylon



866 Stone



877 Tea



816 Java

To finish specifying your Natural Woven Shades, and complete your worksheet, follow this step-by-step process in the [Style Guide](#):

1 SELECT SHADE STYLE

You're on your way

2 SELECT UPGRADED VALANCES & SIDE RETURNS

Options available to conceal componentry

3 SELECT METHOD OF OPERATION

Clutch | Newton | Automation

4 SELECT PRIVACY & SUN CONTROL

Privacy Liner | Independent Dual Shade | Extra Density Weaving

5 SELECT UPGRADES

Shade embellishments | Customization | Challenging Installations

For assistance with specifying or ordering please contact your local representative showroom or H&F.