

# MUSEUM OF INDIAN ARTS + CULTURE

BY

# HARTMANN & FORBES®

DESIGNER COLLABORATION







## MUSEUM OF INDIAN ARTS & CULTURE

---

A PORTION OF THIS  
COLLECTION'S PROCEEDS SUPPORTS  
THE MUSEUM AND ITS MISSION.



Located in Santa Fe, New Mexico, the Museum of Indian Arts and Culture (MIAC) serves as a center of stewardship, knowledge, and understanding of the artistic, cultural, and intellectual achievements of the diverse peoples of the Native Southwest. Hartmann&Forbes was honored to be invited to view the Museum's extensive textile, basketry, and pottery collections and to select four objects from which to reimagine in a range of modern windowcoverings.



GRASSWEAVE [WTS]

STARLIGHT

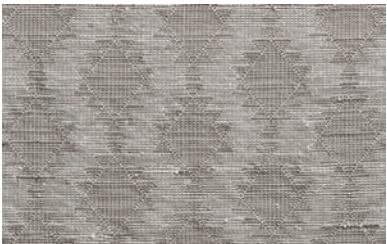
The Starlight series reimagines a turn-of-the-century storage basket from California's Yurok tribe. Jacquard-handloomed of ramie, the elemental motif evokes the timeless symbolism of a star-filled sky, serving as a guide for explorers and travelers alike.



LESF90-12 Parchment



LESF90-18 Tan



LESF90-36 Silver



LESF90-42 Bronze



LESF90-55 Turquoise



INSPIRATION

Storage Basket, ca. 1904  
Artist once known, Yurok people of California.  
Hazelnut rods, spruce root, beargrass, maidenhair fern stem  
Museum of Indian Arts and Culture, Santa Fe, New Mexico  
14296/12

Price Group: 5 | Max Width: 100"  
Available Styles: Roman, Top Treatment

Shown: LESF90-18 Starlight – Tan, Old Style Roman







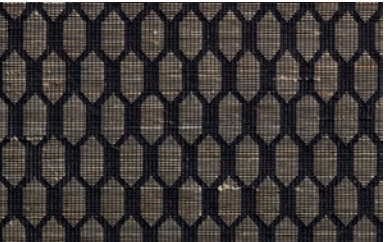
GRASSWEAVE [WTS]

# WATERLINES

Waterlines draws inspiration from a 1977 Pueblo pottery jar designed for carrying water. Woven of ramie on a jacquard-handloom, its geometric honeycomb pattern in a two-tone palette captures the elegant simplicity of interlocking circles formed when water swirls around river rocks.



LESF91-21 Ochre



LESF91-87 Onyx



## INSPIRATION

Pottery Jar, ca. 1977  
Artist once known, Santo Domingo Pueblo.  
Museum of Indian Arts and Culture, Santa Fe, New Mexico  
54324/12

Price Group: 5 | Max Width: 100"  
Available Styles: Roman, Top Treatment

Shown: LESF91-87 Waterlines – Onyx, Old Style Roman



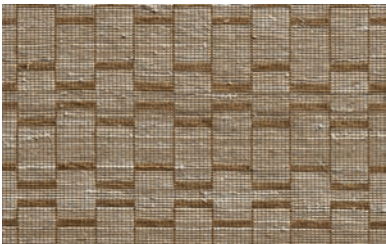
GRASSWEAVE [WTS]

PASSAGES

A 1960s Hopi woven bowl made of yucca leaves inspired Passages. Ramie is jacquard-handloomed in a rhythmic rectilinear pattern that draws references to the original conversation between the maker and the basket. The tactile weave softens the crisp geometry while evoking the intricate look of basketry.



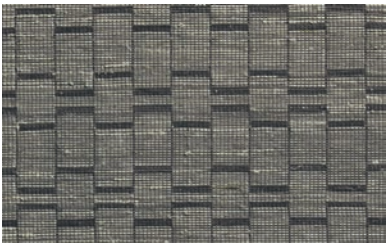
LESF92-09 Chamois



LESF92-21 Ochre



LESF92-42 Bronze



LESF92-84 Graphite



**INSPIRATION**  
Bowl, ca. 1960-1968  
Ada Fredricks, Hopi.  
Yucca leaves, rabbit brush, and galleta grass  
Museum of Indian Arts and Culture, Santa Fe, New Mexico  
56157/12

Price Group: 5 | Max Width: 100"  
Available Styles: Roman, Top Treatment







LESF93-18 Tan



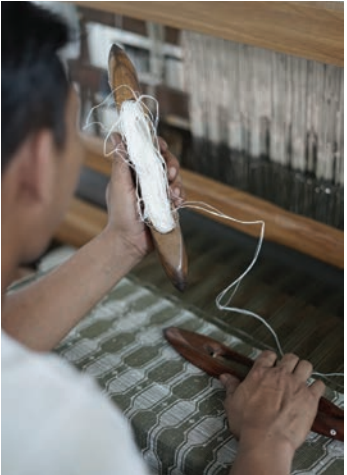
LESF93-21 Ochre



LESF93-36 Silver



LESF93-30 Sage



### GRASSWEAVE [WTS]

## SKY LADDER

Inspired by a 1940s Navajo wool saddle blanket, Sky Ladder is defined by a series of hexagonal shapes descending in vertical bands with delicate diamonds for artful detail. Jacquard-handloomed of ramie, its rich texture complements the tone-on-tone beauty, while the ladder-shaped motif symbolizes the rider's journey along rivers and under the cloud-filled sky.



**INSPIRATION**  
Rug, Crystal or Chinle style, ca. 1940  
Artist once known, Navajo.  
Wool  
Museum of Indian Arts and Culture, Santa Fe, New Mexico  
48188/12

**Window** Price Group: 5 | Max Width: 100"  
Available Styles: Roman, Top Treatment

Shown: LESF93-36 Sky Ladder – Silver, Old Style Roman