

# HARTMANN & FORBES

STUDIO CONCEPTS







# H&F STUDIO CONCEPTS

---

## ARCHETYPE WEAVES IN THE MAKING

Founded by artistic curiosity and aimed at presenting a grouping of individual, limited-edition designs of exotic fibers that, over time, may evolve and reside inside a broader collection.





NEW

## LE6015 PLAIT

Meticulously jacquard-handloomed, this limited-edition series lends an artisanal look to an interior. Dimensional strands of natural banana fiber are braided by hand and woven into a ramie ground in an undulating pattern, the complex layering of textural materials yielding rich, organic beauty.

NEW

## LE6109 CREEL

Rugged wicker baskets used by anglers to carry fish inspired this limited-edition windowcovering series. Woven on a jacquard-handloom, Creel's cream-colored ramie ground is punctuated with hand-placed contrasting patches of soft-brown water hyacinth fibers in a rhythmic interplay of texture and tone.

Price Group: 4 | Max Width: 100"  
Available Styles: Roman, Top Treatment

Shown: LE6109 Creel, Old Style Roman  
WL428-09 Savannah – Ogeechee, Wallcovering





LE4339  
TWEED

Created of ramie and interweaving tones of refined gray and neutral warps, this openly checked pattern is a light and modern approach to historical tweed.







## LE4842 HAVANA

Defined by distinctive plaid stripes enriched with an intricate check pattern adding depth and definition against a beige backdrop, Havana is loomed with hand-placed fibers of black abaca and thick, textural ramie. The sensibility is at once relaxed and tailored.

Price Group: 4 | Max Width: 180"  
Available Styles: Roman, Top Treatment

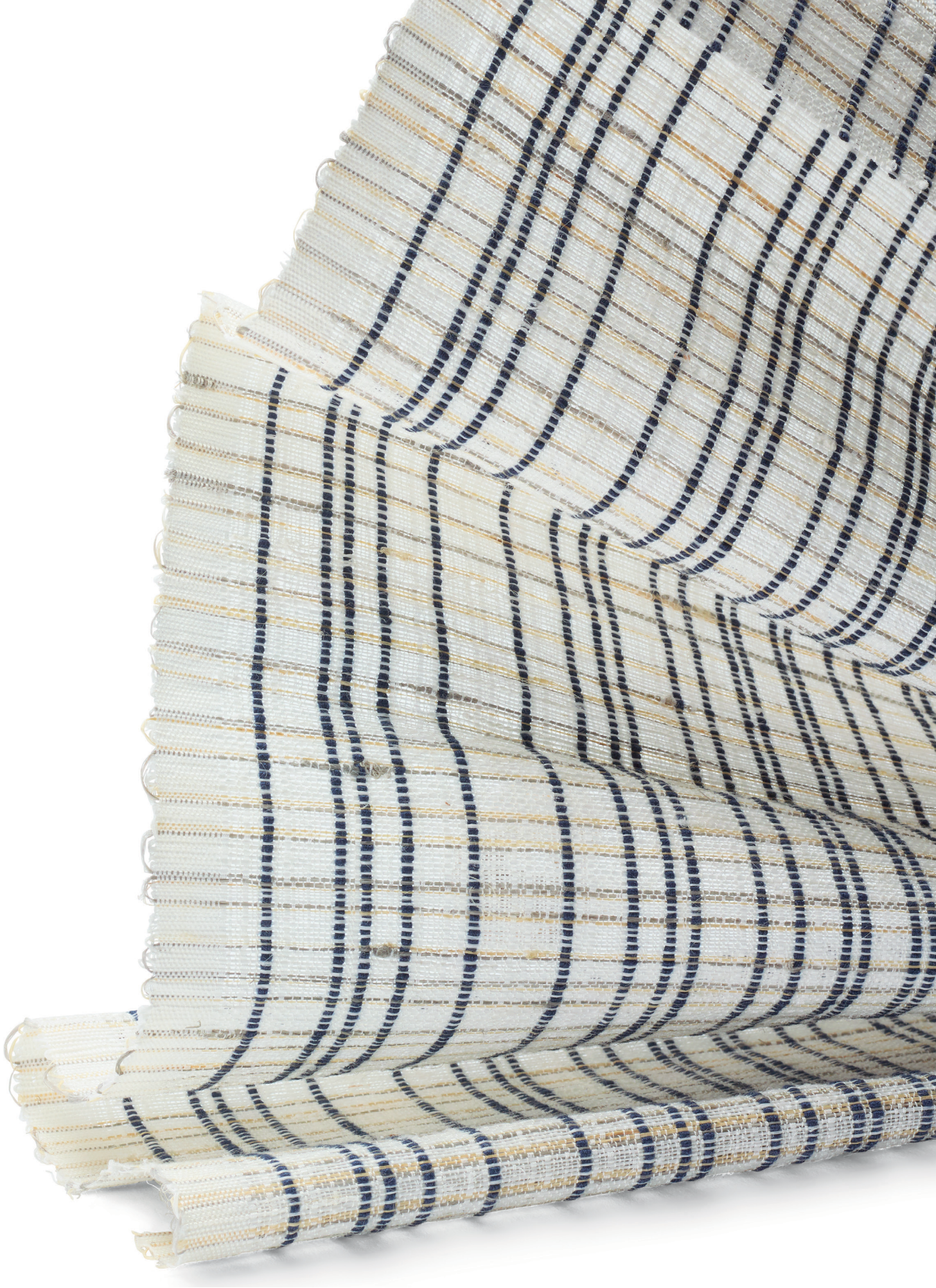






# LE4481 TATTERSALL

Created in honor of the historical 18th century Tattersall blanket pattern, this modern perspective is composed of interwoven indigo warp threads and ramie, highlighting strong vertical lines with contrasting neutrals.







# LE4715 MELANGE

A multihued mix of fibers marks the Melange design. Ramie, palm, and black abaca are skillfully twisted together to evoke the heathered look of eagle feathers. The weave – distinctive and dense – combines natural colors to create a slanted, impressionistic pattern.



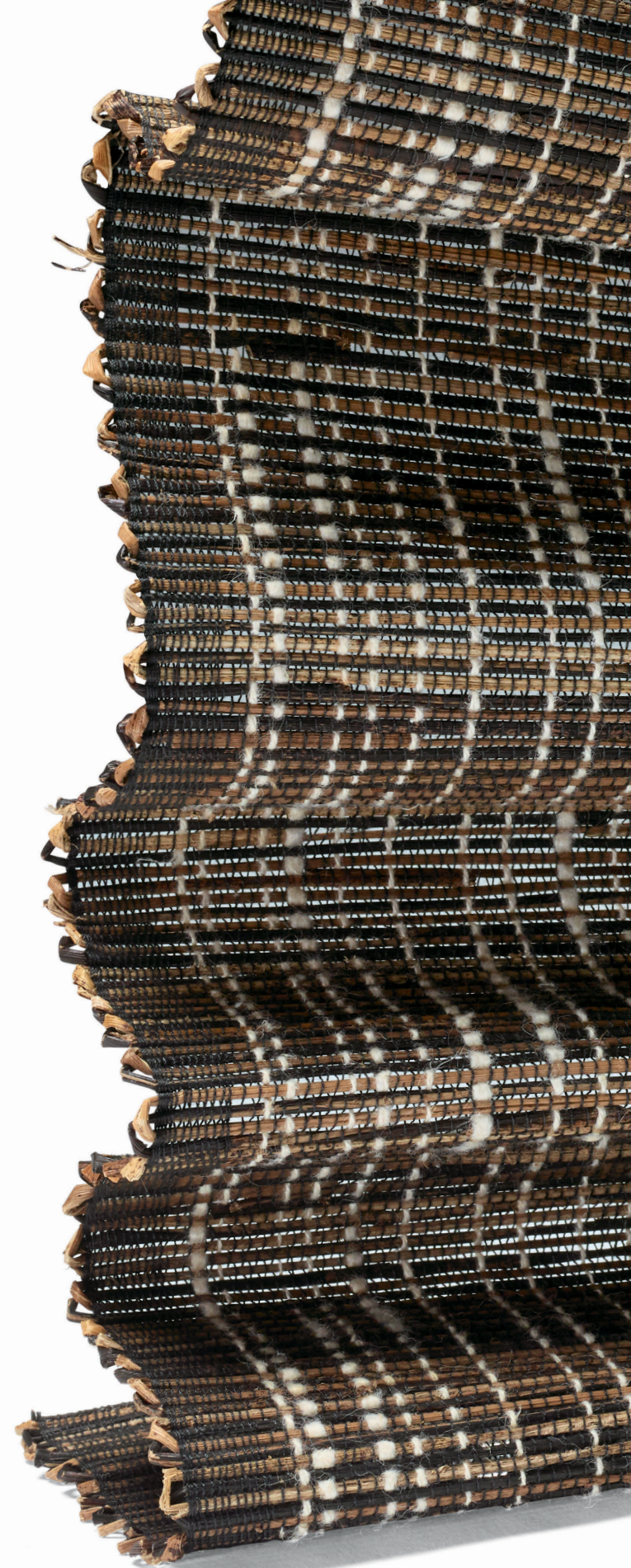




Table courtesy – O'Hara Studio | Chairs courtesy – Tiffany Home Design

## LE4642 GROOVE

Lending a vibrant and earthy uptake on mid-century modern, this upbeat and textural design of abaca fiber is complemented with hand-placed water hyacinth and a continuous warp thread of woodsy neutrals.

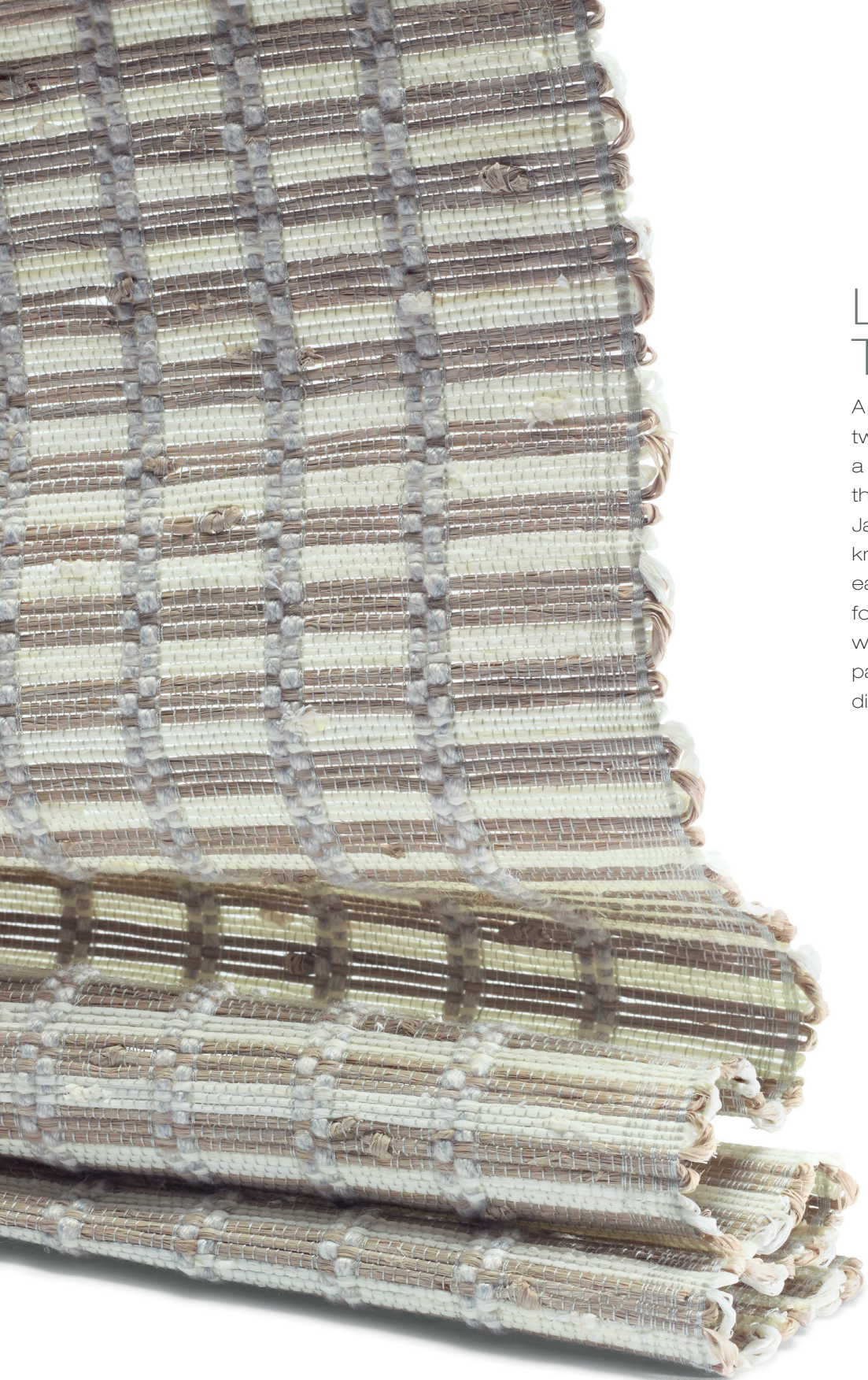


Price Group: 4 | Max Width: 180"  
Available Styles: Roman, Roller, Top Treatment

Shown: LE4642 Groove, Old Style Roman

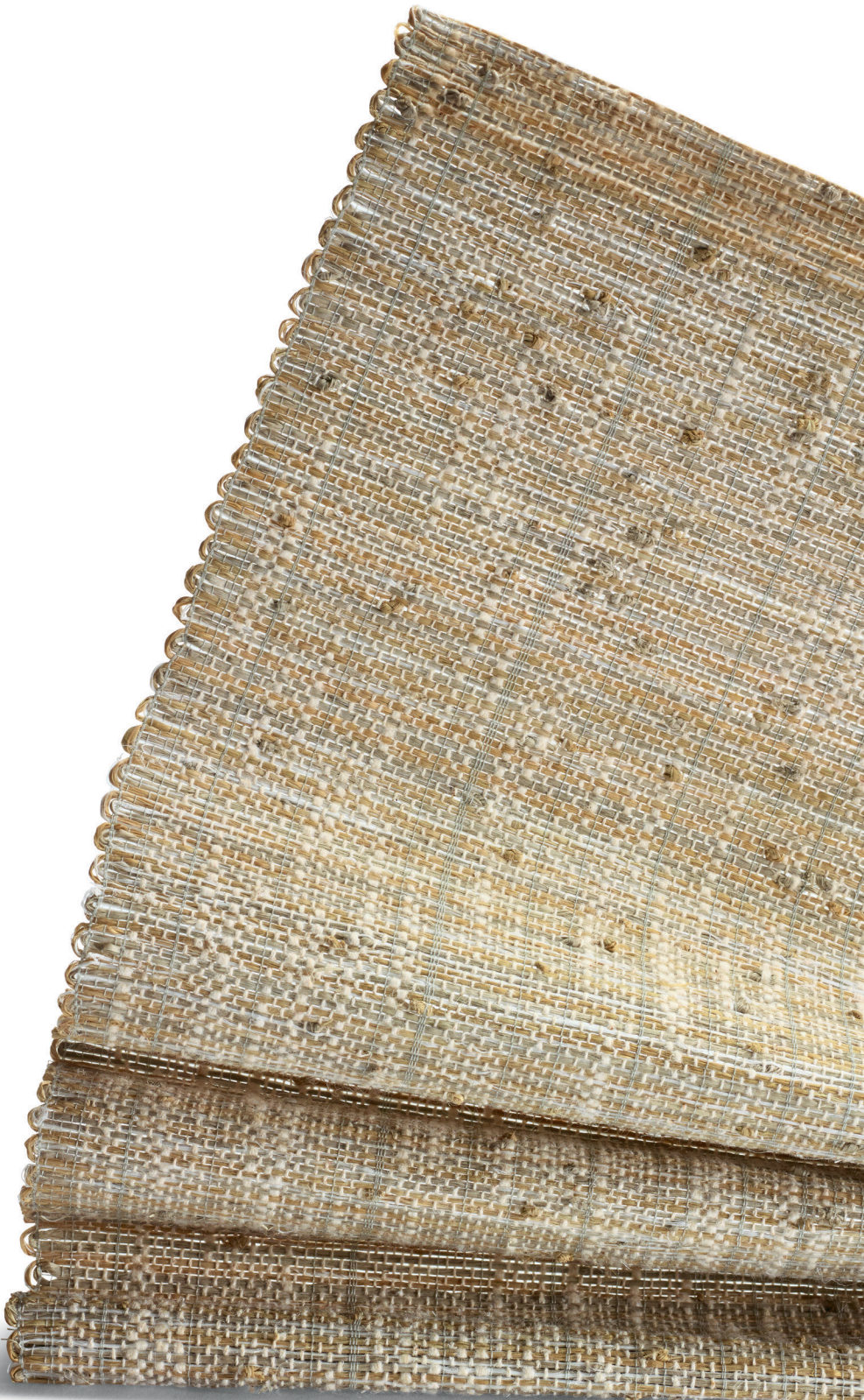
888.582.8780 | [HARTMANNFORBES.COM](https://www.hartmannforbes.com)





## LE4918 TATAMI

A thick warp of double-twisted palm yarns yields a textural landscape that conjures traditional Japanese mats. Hand-knotted fibers in two earthy colors combine to form a tonal grid pattern, while allowing light to pass through like a dimensional screen.



## LE5051 PIMA

Masterfully interwoven with a mix of thick and thin ramie fibers creating a variegated palette, Pima features a freeform composition of subtle, open stripes. Elegant, white striations are reminiscent of cotton fields, which enhances the tactile richness and rustic-meets-refined feel.





Desk courtesy – The Joinery

# LE4587 CABLE

Inspired by centuries-old traditional African hand braiding, this textural pattern is punctuated by intricately-braided dark ramie and enlightened by playful cream warp threads.



Price Group: 4 | Max Width: 180"  
Available Styles: Roman, Top Treatment

Shown: LE4587 Cable, Old Style Roman

888.582.8780 | HARTMANNFORBES.COM