

HARTMANN & FORBES

NATURAL WALLCOVERING





NATURAL WALLCOVERING

Sustainably cultivated and rapidly renewable materials are hand woven or crafted, paper backed and trimmed for the wall. The range of neutral colors, natural textures and timeless designs complement any residential, commercial or hospitality space.



J. RANDALL POWERS

Principal of his eponymous Houston, Texas firm and named one of the top interior designers in the country on Elle Decor's annual AList, J. Randall Powers is renowned for his classic, yet cosmopolitan style. The J. Randall Powers Collection reveals the artisanal quality of Hartmann&Forbes' handwoven textiles combined with Powers' penchant for tailored patterns with a playful twist.



CHRISTOPHER CHECK

A crisp windowpane pattern defines the Christopher Check Collection. An overscaled check pattern is gravure-printed upon hand woven sisal of natural variation, creating a windowpane pattern. Framed in subtle, sophisticated colors, it imparts a graphic punch that enlivens the rigorous geometry.



WLJP24-72 Brick



WLJP24-33 Slate



WLJP24-18 Taupe

JG PLAID

A fresh take on traditional plaid, strong crisscrossing pencil stripes in an irregular sequence form an intriguing dimensional look. A woodland palette of moss and linen play relaxed counterpoint to the structured sensibility.

Taking notes from the JG Plaid handwoven Grass-weave design, the JG Plaid wallcovering is defined by crisscrossing pencil stripes in hues of linen. The natural woven sisal is flooded with a moss green color and the stripes are gravure-printed for an intriguing dimensional look.



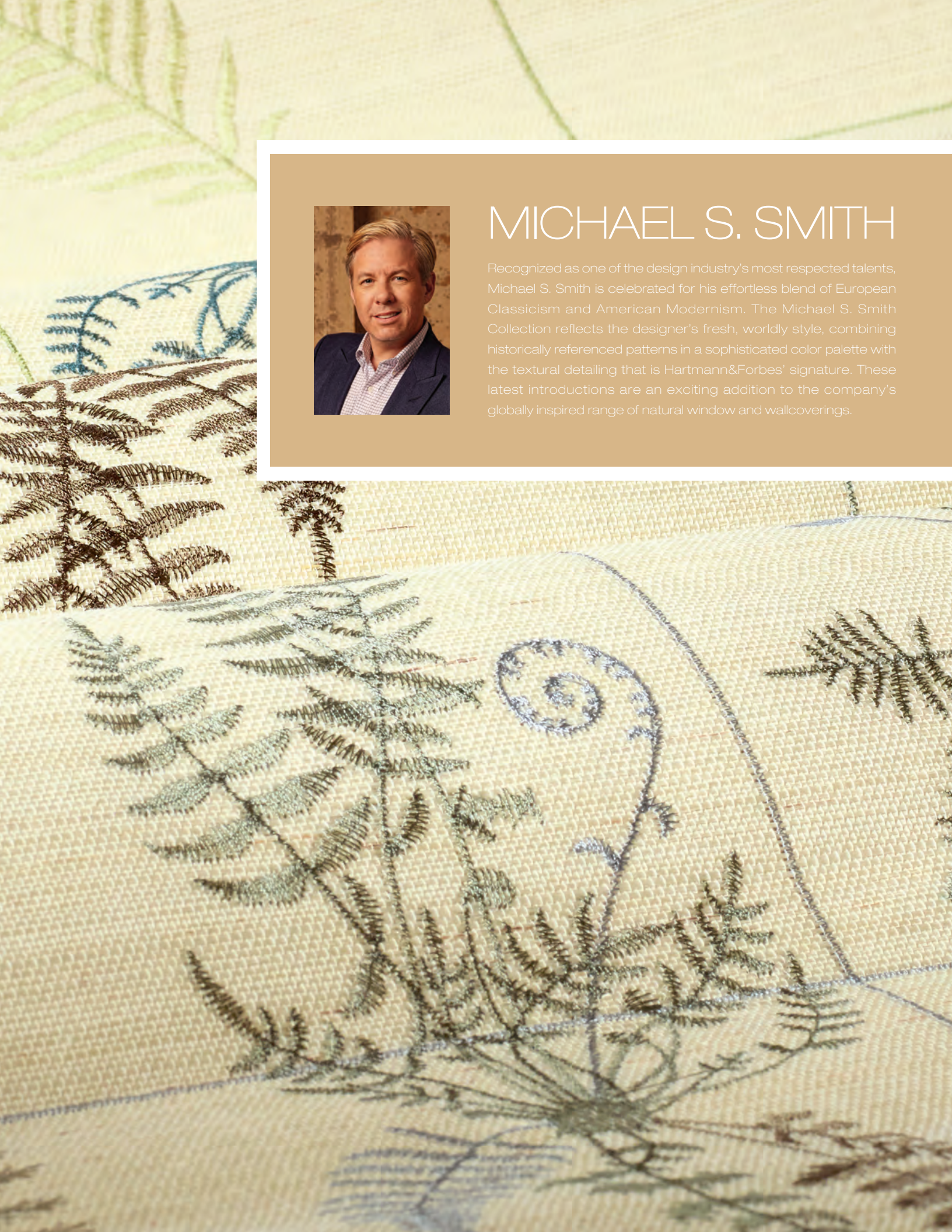
WLJP25-78 Linen on Moss





MICHAEL S. SMITH

Recognized as one of the design industry's most respected talents, Michael S. Smith is celebrated for his effortless blend of European Classicism and American Modernism. The Michael S. Smith Collection reflects the designer's fresh, worldly style, combining historically referenced patterns in a sophisticated color palette with the textural detailing that is Hartmann&Forbes' signature. These latest introductions are an exciting addition to the company's globally inspired range of natural window and wallcoverings.







WLMS77-30 Linden



WLMS77-54 Sage



WLMS77-55 Teal

MADELEINE

At once romantic and refined, our Madeleine wall-covering was inspired by a fern motif often used by Madeleine Castaing, the iconic 20th-century French designer and antiques dealer. Natural sisal is meticulously embroidered in a palette of sage, linden, and teal, creating a dimensional pattern of interlocking ferns, which is framed by a crisp windowpane grid.

Width: 36" (91.4cm) | Length: 12yds (7.3m)

Shown: WLMS77-30 Madeleine – Linden, Wallcovering
LEMS76-30 Jacob Stripe – Linden, Windowcovering

888.582.8780 | HARTMANNFORBES.COM

KAMAKURA

Merging geometric shapes with Japanese imagery, this complex composition depicts beauty and serenity in a thoughtful, artistic way. In transposing the stenciled design to a textured grasscloth, Smith has created a layered backdrop that can coordinate seamlessly with both modern and traditional interiors.



WLMS75-42 Bronze



WLMS75-54 Malachite



WLMS75-57 Lapis



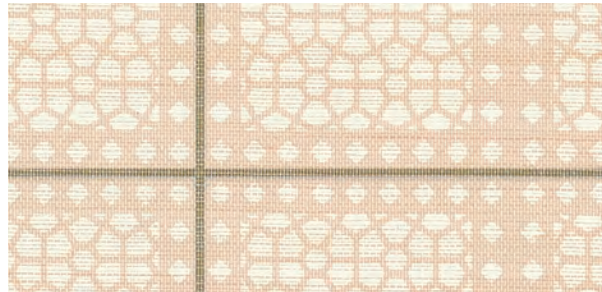
WLMS75-72 Ruby



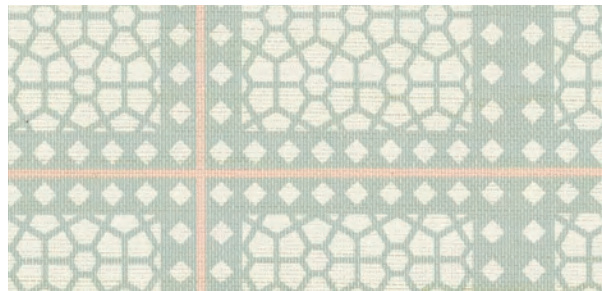


MAJORELLE

Inspired by the famous French artist Jacques Majorelle and his world-renowned garden and home in Marrakesh, Morocco, this sublime wallcovering features graphic arrangements reminiscent of architectural lattice screens found in palaces and temples from Morocco to the Middle East.



WLMS73-06 Sandstone



WLMS73-32 Celadon

Window Price Group: 7 | Max Width: 180"
Available Styles: Roman, Roller, Drapery, Top Treatment

Wall Width: 36" (91.4cm) | Length: 8yds (7.3m)

Shown: LEMS70-12 Cascade – Ivory, Old Style Roman
WLMS73-06 Majorelle – Sandstone, Wallcovering



JAPÓN GARDEN

An enduring, woven wallcovering imbued with rich, bold patterns that evoke flora in unusual and unexpected ways. Inspired by antique, hand-carved abaca stencils, these designs bring depth and interest to any room. Hand-mixed, saturated pigments are printed over a neutral background to create a warm, artistic and inviting effect.



WLMS74-51 Amber



WLMS74-57 Red/Blue



WLMS74-30 Verde



WLMS74-18 Stone



WLMS74-12 Mist

Width: 36" (91.4cm) | Length: 8yds (7.3m)





AGRA LATTICE

Inspired by beautiful, hand-turned spindle designs used throughout Indian architecture for generations, Agra Lattice depicts a maze-like, hand-stenciled pattern with abstracts that play upon form, texture and movement. Smith has adapted the traditional spindle motif and has reinterpreted it into a rhythmic arrangement on rich, woven wallcovering that is as meditative as it is vibrant.



WLMS72-27 Sandstone



WLMS72-51 Limestone



WLMS72-57 Azul





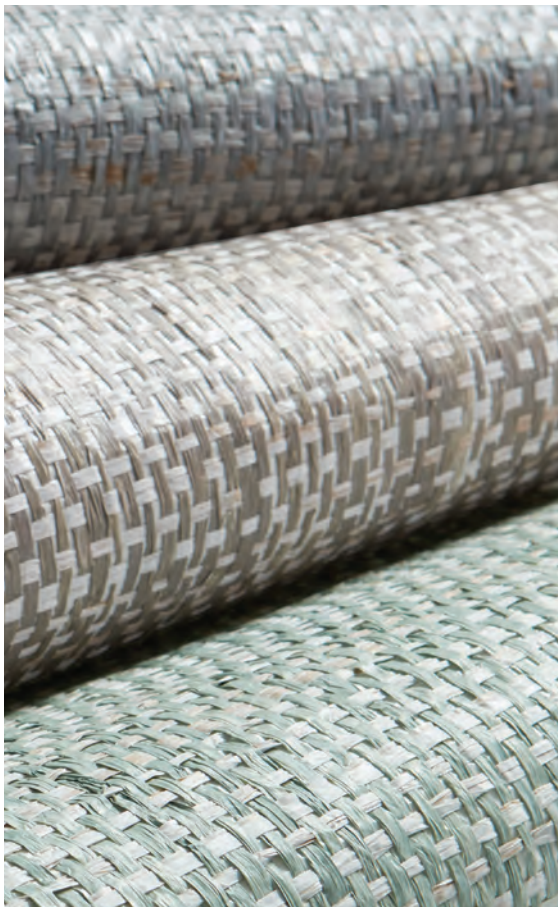
H&F STUDIO

A passion for handweaving, design exploration and a love of nature continues to fuel the evolution and growth of our in-house collections.



NEW BEACHFRONT

At once relaxed and refined, Beachfront captures its namesake coastal feel. Artisan-loomed of textural raffia, its hand-painted fibers reveal variable brushstrokes for a laidback look. The colorized warp combined with whitewashed weft fibers in an open weave, creating a dimensional, sun-dappled appearance that recalls casual beach mats.



WL425-18 Bandon



WL425-32 Seaside



WL425-36 Newport

BAJA

Resembling the majestic sandy coastlines in the summertime, the Baja Series radiates with a warm and inviting pale, sandy-patina unique to natural fibers such as mother of pearl, raffia and waterlily.



WL424-06 Coral Sands



WL424-03 White Sands



WL424-12 Desert Sands



WL424-06 Baja – Coral Sands





WL424-12 Baja – Desert Sands



SEABOARD

Inspired by that fleeting moment when the sea mist-covered boardwalk mirrors the sunset, Seaboard reflects this elegantly subtle shimmer in unique designs using fibers of abaca and hand-stripped water lillies.



WL414-03 Cape



WL414-12 Landing



WL414-36 Pier





RIVERFRONT

Resembling reflective waters of a river winding through a city, the Riverfront series is highlighted by golden metallic threads interwoven within soft white and silver abaca.



WL415-03 Sail



WL415-36 Mooring

Width: 43" (109cm) | Length: By-the-Yard

Shown: WL415-03 Riverfront – Sail, Wallcovering

888.582.8780 | HARTMANNFORBES.COM

HARBOR

Sailboat-dotted inlets and ocean sunbeams inspire this eye-catching design. Hearty bac bac fiber is hand-stripped, handwoven, backed with colored paper, then washed with white or metallic pigments. This artisanal process creates a dimensional wall-covering of extraordinary character.



WL420-21 Nantucket



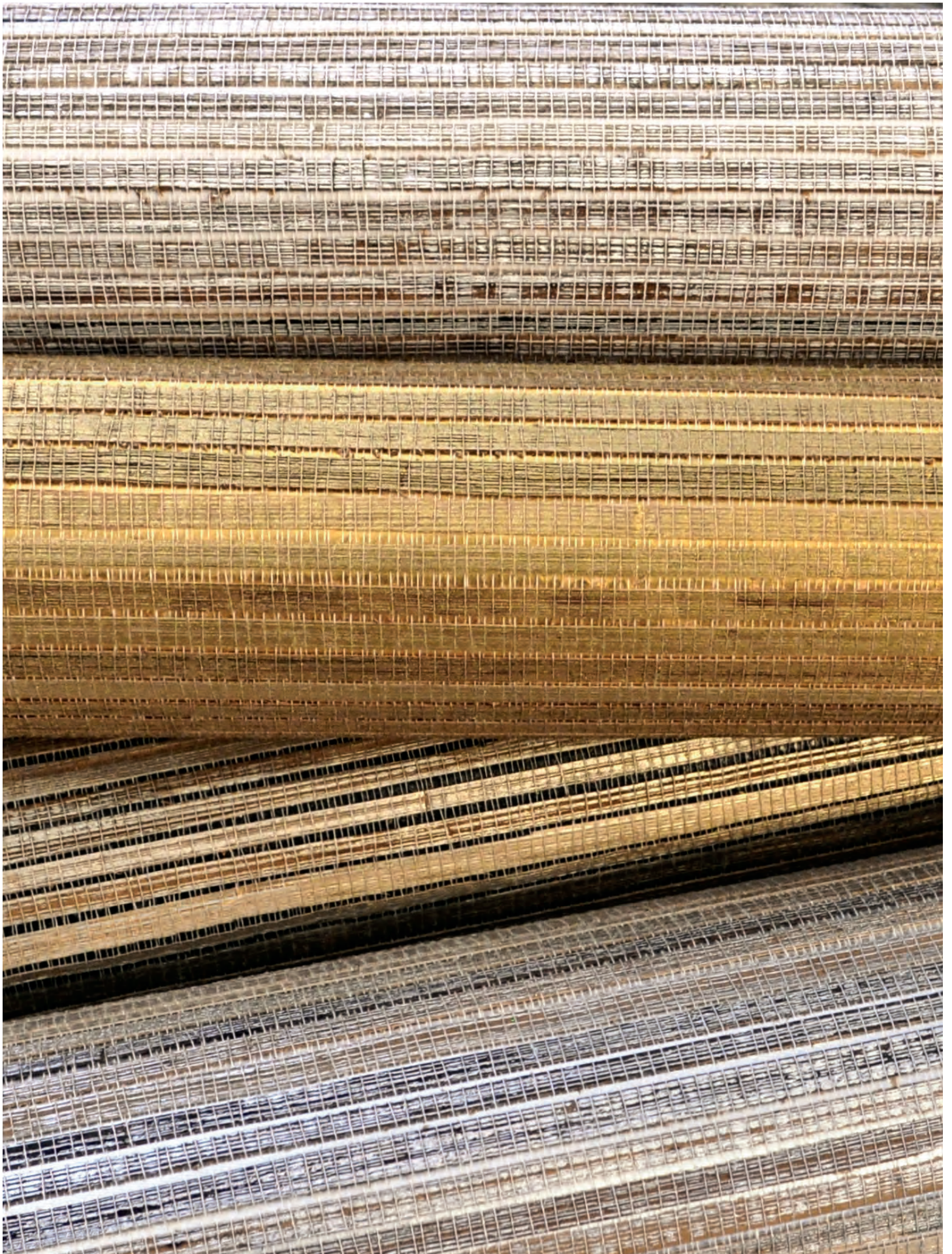
WL420-42 Rockport



WL420-45 San Juan



WL420-51 Catalina





ISLAND COAST

Elemental marine hues wash over this classic handwoven raffia weave with clear lacquer finish for subtle sheen. A contemporary classic that invites the outdoors in.



WL418-06 Shell



WL418-33 Sea Mist



WL418-15 Pebble



WL418-42 Tortoise







WL417-15 Sea Foam



WL417-33 Sea Break



WL417-45 Beach



WL417-60 Haze

PENINSULA

Mineral browns and seafoam greens, swirl and eddy in energetic motion over handwoven raffia with exposed micro knots. A pearlized glaze adds subtle glimmer to the weave and lends instant radiance to a space.





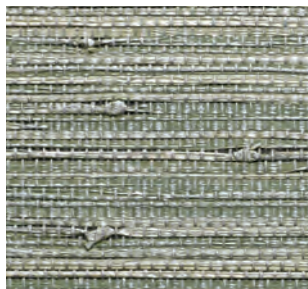
WL405 Jordanelle



WL406 Rockport



WL407 Elkhorn



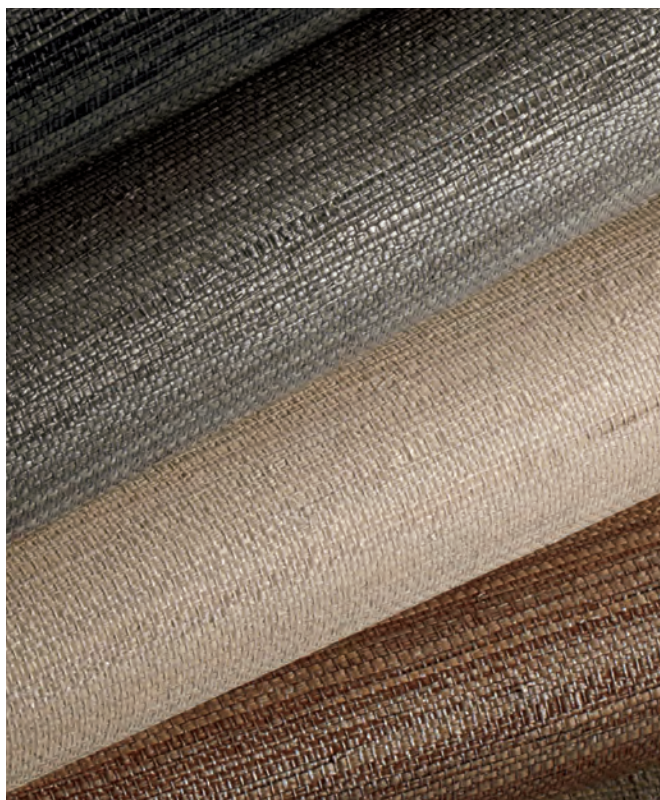
WL403-65 Wasatch Peak



WL402-72 Red Rock



WL408 Deer Valley



SUNDANCE

The Utah Canyonland is a revered place devoted to the exploration of art, nature and cultural heritage. Constructed from tightly-woven paper fiber, the Sundance color palette is a striking combination of variegated earth tones with gold metallic overlay.



CASCADIA

An energetic metropolis is nestled between the volcanic peaks of the Cascade Range and the shimmering waters of the Puget Sound. Fresh and dynamic, these weaves embody the beauty of the Pacific Northwest.



WL310 Rainier



WL311 Queen Anne



WL315 Pinehurst



WL313 Alki



WL312 Pike



WL314 Madrona



WL316-84 Sandpoint

Width: 36" (91.4cm) | Length: 8yds (7.3m)

Shown: WL312 Cascadia - Pike, Wallcovering

888.582.8780 | HARTMANNFORBES.COM





TAHOE

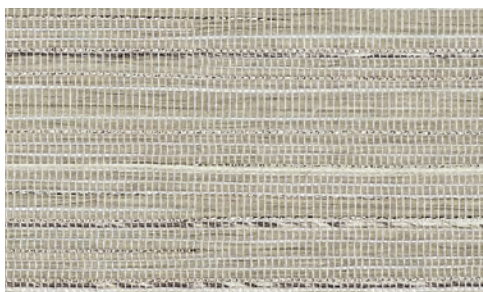
Drawing inspiration from the golden tones that ignite the lip of Lake Tahoe's snow-lined shores, this series' blended weave of gold metallic threads into a woven paper backdrop encapsulates Tahoe's stunning late winter evenings.



WL410-06 Snowdrift



WL410-21 Sundown



WL410-12 Icecap



WL410-81 Starlight



BIG SKY

The spectacular color display of Montana's open ranges is translated into this vigorous textural weave of jute and linen. Exposed knots and striated sagebrush colors contribute to a strong linear design.



WL419-21 Badlands



WL419-33 Bighorn



WL364 Cypress



WL365 Sequoia



WL366 Ventana



SANTA LUCIA

Windswept seas and rugged shorelines are nearly palpable in the weaves of the Santa Lucia series. Each pattern gracefully infuses visions of cleansing mists, wild bluffs and coastal skies into any interior.

HIGH DESERT

The High Desert series combines the stark beauty of the back country with the tenderness of life that thrives there. Striated, textured and dramatic, each weave exudes the warmth and character that draws people to the desert.



WL358 Sonoran



WL353 Ridgecrest



WL357 Sedona



WL354 Sweetwater



WL355 Sage Creek



WL352 Mineral Springs



WL359 Mojave

NORTH ESTATE

The hand-hewn weaves of the North Estate series provides walls with a cultivated and distinct patina reminiscent of fertile, sun-dappled valleys draped with vine-ripened fruit.



WL321 Blanc



WL323 Barrique



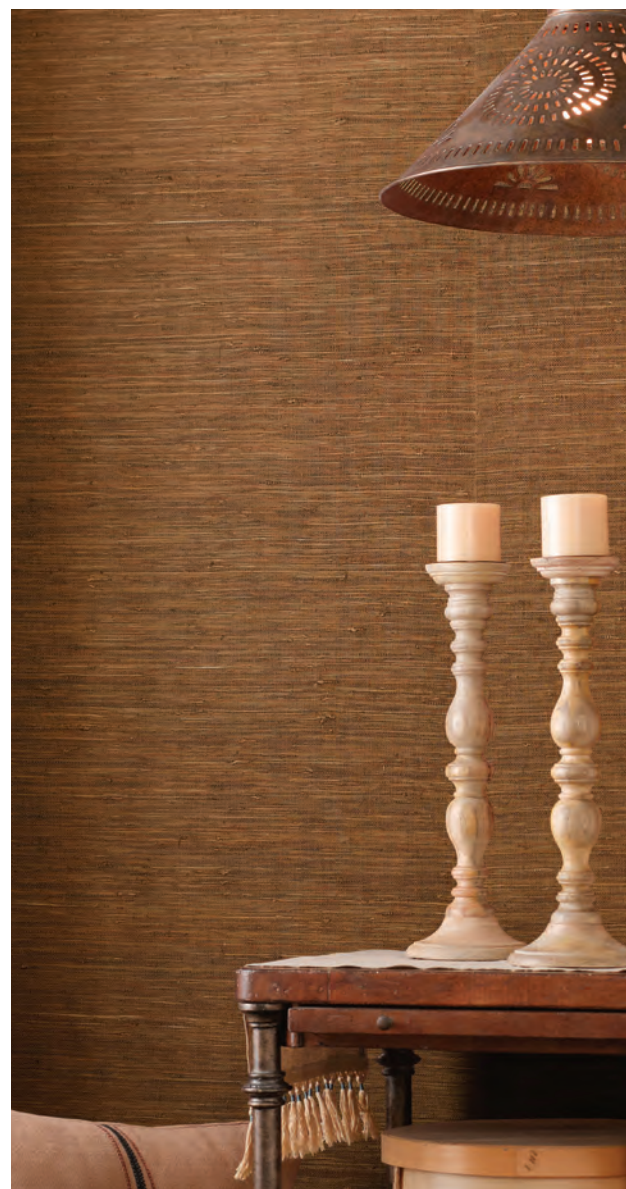
WL325 Claret



WL322 Chateau



WL326 Domaine





WL409-15 Chaff

ACRE

High on a Montana plateau at the edge of a pond, sun-bleached grasses sway in the wind. Horses gather to sip the clear water. These designs draw upon the serenity of the breeze, grass and water.



WL409-12 Oat



WL409-21 Hay

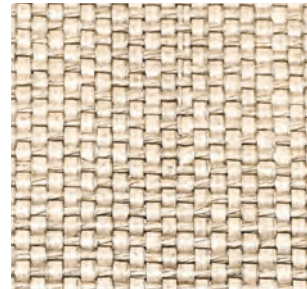


HILL COUNTRY

The Hill Country series evokes the unending vistas of the open range. Each design proudly shares the texture, warmth and rich character of the prairie's natural grassland.



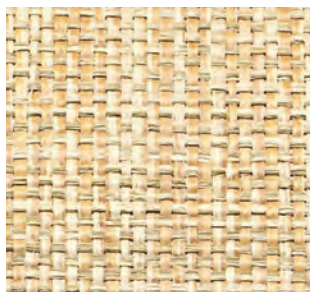
WL349 Muhly



WL348 Chapparal



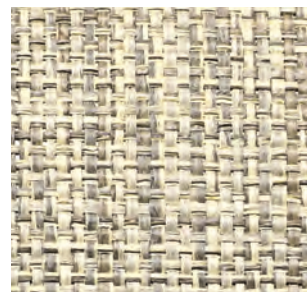
WL346 Wildseed



WL344 Ranchgrass



WL345 Verdure

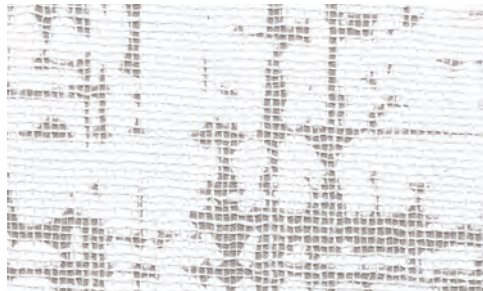


WL347 Greystem



UPTOWN

This refined wallcovering conveys the energy of urban construction. An abstract grid design is enlarged, rotary printed, then a thin layer of linen delicately hand applied to soften the effect. The result is a seamless backdrop that adds an element of the unexpected.



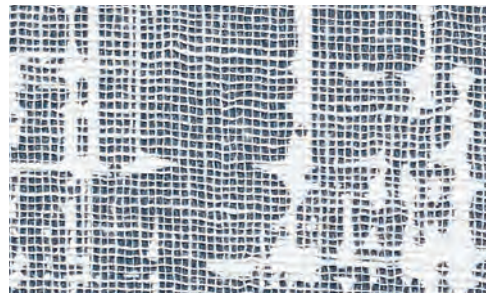
WL422-15 Boulevard



WL422-09 Walkway



WL422-60 Skyway



WL422-84 Rooftop



Design – Tiffany Home Design | Photo – Realty Photo NW



WL333 Telfair



WL334 Sorrel



WL335 Chippewa



WL336 Forsyth

COLONIAL

The Colonial series recalls the classic elegance of traditional Southern style. Soft, muted hues of nature combine with a delicate pattern to create a new level of refinement in wallcoverings.

DISTRICT

The unmistakable history of our nation's capital is reflected in the District series' warm colors and clean lines, which honor the past while celebrating today's contemporary design ideals.



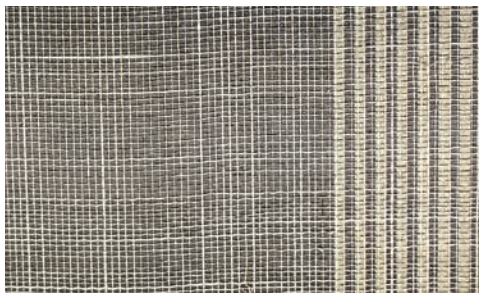
WL301 Capitol



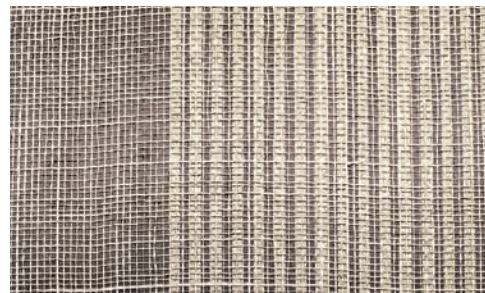
WL304 Georgetown



WL302 Dupont



WL303 Trinity



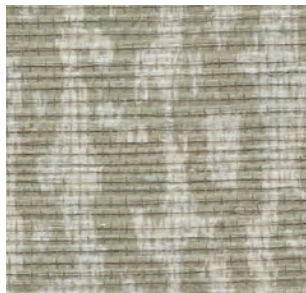
WL305 Bethesda



Design – Tiffany Home Design | Photo – Eljah Hoffman

MONTEREY

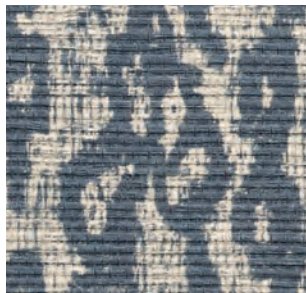
The tidal beauty of Monterey Bay flows in this design of shifting sand and sea-smoothed pebbles. The application of digital printing on traditional grasscloth makes this a contemporary take on a classic wallcovering.



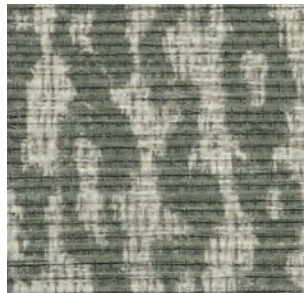
WL421-15 Tide Stone



WL421-45 Reef



WL421-57 Sea Glass



WL421-60 Dark Shell





CATHEDRAL

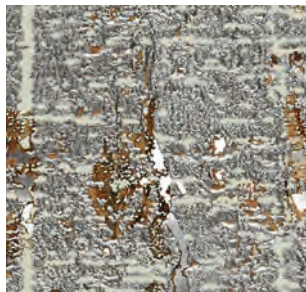
Resembling the glossy bark of rain-soaked aspens in the Cathedral region of the Colorado mountains, this innovative design is created with hand-sliced cork skillfully placed on metallic backing paper, then printed with a design inspired by winter woodlands. This meticulous process results in a lasting impression.



WL423-03 White Gold



WL423-09 Gilded



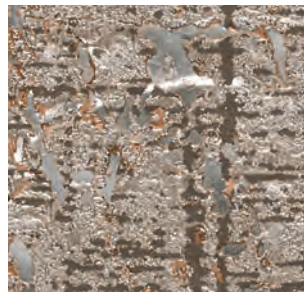
WL423-36 Silver



WL423-15 Pewter



WL423-39 Bronze

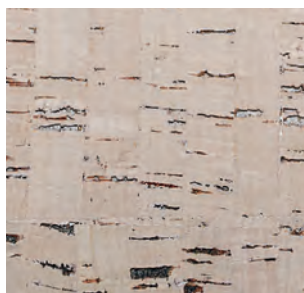


WL423-18 Copper



ALPINE

Hand-stripped cork reminiscent of snow-capped summits, rich pine forests and glacial meadows brings home the seldom-experienced richness of a soft-to-the-touch wilderness.



WL375 Bristlecone



WL374 Aspen



WL377 Larch



WL376 Pine



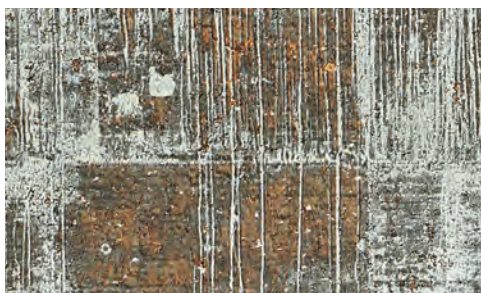
WL378 Spruce



WL381 Lincoln Park



WL382 Bucktown



WL383 Edgewater



Design – Tiffany Home Design | Photo – Elijah Hoffman

LAKE SHORE

The radiant finish of the Lake Shore series is reminiscent of skyscrapers rising up from Lake Michigan in downtown Chicago. Hand-peeled cork is backed with metallic paper and hand blocked with a metallic finish.



NORTHSANDS

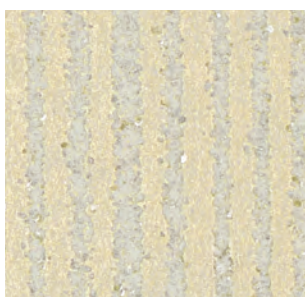
The Northsands series features a neutral palette of vertical mica sand stripes against the subtle shimmer of a metallic backdrop. Northsands can be installed railroaded to create a horizontal stripe.



WL412-36 Sterling



WL412-03 Pearlescent



WL412-06 Opalescent



WL412-21 Gilt

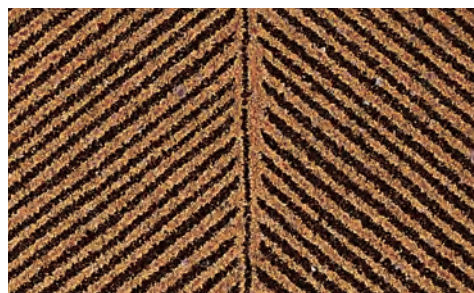


COASTLINE

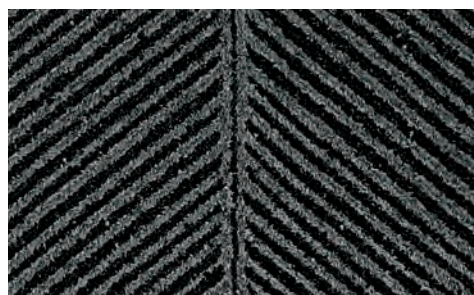
Reflecting the dramatic rise and fall of the ocean tide, the Coastline series presents an oversized, herringbone-inspired mica sand pattern complemented by a dramatic metallic backdrop.



WL413-03 Clouded



WL413-45 Golden



WL413-84 Eclipse

Width: 36" (91.4cm) | Length: 11yds (10m)

Shown: WL413-45 Coastline – Golden, Wallcovering

888.582.8780 | HARTMANNFORBES.COM