

MAX HUMPHREY
BY
HARTMANN & FORBES®

DESIGNER COLLABORATION





MAX HUMPHREY

Recognized as a design change-maker, Max Humphrey is a Portland-based interior designer, art director and product designer. His trademark lived-in, layered look has earned accolades, including being named a "Next Wave" designer by House Beautiful and one of Country Living's 100 most creative people. Humphrey's new collection celebrates modern Americana with a nostalgic twist and a fresh take on classic prints and patterns—gingham, quilt and cable knit—rendered in Hartmann&Forbes' handwoven natural textiles.







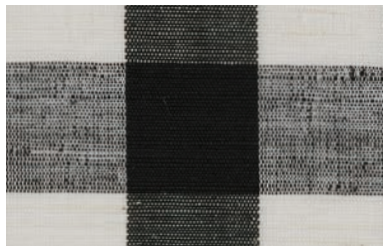
GRASSWEAVE [WTS]

GINGHAM

Humphrey reimagines this traditional gingham check as a versatile neutral in his collection. Its simple, medium-scale motif is loomed of natural ramie fibers, creating subtle variations in each square that soften the geometric grid and highlight its handcrafted quality. The weft fibers are dyed to match the warp, infusing the two-tone pattern with graphic impact and visual dimension.



LEMH500-21 Gold



LEMH500-87 Black



GRASSWEAVE [WTS]

GRAIN SACK

Inspired by vintage grain sacks, this series elevates the humble carryall to a nostalgic, handcrafted design. The sturdy ramie weave is accented with slender stripes of red, white or blue against a denim or natural ground, evoking a quintessential Americana mood in a fresh format.



LEMH502-06 Natural



LEMH502-57 Denim



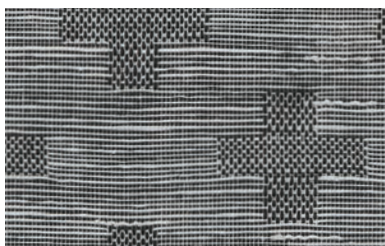




GRASSWEAVE [WTS]

CROSS

An age-old symbol in nature and iconography, the venerable cross is reinterpreted in jacquard-loomed ramie. The crosses, formed of an intricate check pattern, float in a textural landscape delineated by horizontal lines, its tonal black-and-white palette producing a primitive, understated design.



LEMH501-84 Charcoal

Window Price Group: 7 | Max Width: 100"
Available Styles: Roman, Drapery, Top Treatment

Shown: LEMH501-84 Cross – Charcoal, Old Style

888.582.8780 | HARTMANNFORBES.COM



GRASSWEAVE [WTS]

QUILT

A modern take on traditional quilts, this series nods to the nostalgia of handmade crafts with its classic chain motif. The geometric pattern and two tonal colors provide a contemporary twist, while jacquard-loomed ramie creates subtle variations in the weave for rich texture and visual dimension.



LEMH504-18 Faded Khaki



LEMH504-57 Indigo

GRASSWEAVE [WTS]
CABLEKNIT

Reminiscent of iconic New England sweaters, this series is distinguished by its rich dimension rendered on a jacquard loom. A dense weave of refined ramie features alternating cable ribs framed in columns. They twist down planes of fabric, imparting visual depth and subtly raised texture in a design at once classic and contemporary.



LEMH503-15 Heathered Gray



LEMH503-57 Heathered Blue

