

J RANDALL POWERS

BY

HARTMANN & FORBES®

DESIGNER COLLABORATION





J. RANDALL POWERS

Principal of his eponymous Houston, Texas firm and named one of the top interior designers in the country on Elle Decor's annual A List, J. Randall Powers is renowned for his classic, yet cosmopolitan style. The J. Randall Powers Collection reveals the artisanal quality of Hartmann&Forbes' handwoven textiles combined with Powers' penchant for tailored patterns with a playful twist.

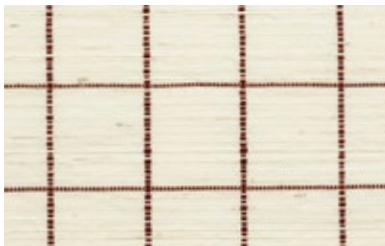




CHRISTOPHER CHECK

A crisp windowpane pattern defines the Christopher Check Collection. Handwoven windowcovering of ramie, and gravure-printed wallcovering on a ground of natural sisal, are framed in bold hues, imparting a graphic punch that enlivens the rigorous geometry. Sophisticated yet friendly, it suits formal and informal spaces alike.

WINDOWCOVERING



LEJP21-72 Brick



LEJP21-33 Slate



LEJP21-18 Taupe

WALLCOVERING



WLJP24-72 Brick



WLJP24-33 Slate



WLJP24-18 Taupe

Window Price Group: 7 | Max Width: 180"
Available Styles: Roman, Roller, Drapery, Top Treatment

Wall Width: 36" (91.4cm) | Length: 12yds (7.3m)

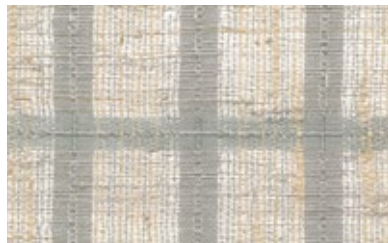
Shown: WLJP24-72 Christopher Check – Brick, Wallcovering
LEJP21-72 Christopher Check – Brick, Windowcovering



GRASSWEAVE [WTS]

BALDWIN STRIPE

An open weave of yarns and dyed ramie form a relaxed rectangular motif. Its intricate warp and weft lending depth and detail to the interior geometry. Artfully accented with bands of color in a subdued, subtle palette of mist and cream, the vertical stripes add layers of tonal beauty to the gauzy ground.



LEJP23-36 Mist



LEJP23-06 Cream





GRASSWEAVE [WTS]

APSLEY CHECK

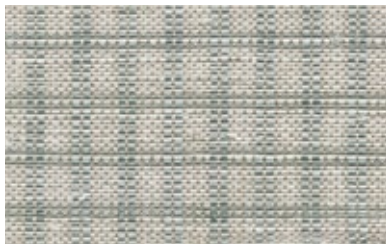
Clean-lined and classic, Apsley Check is defined by small, even squares that recall the timeless Shepherd's check. Woven of refined ramie, this weave evokes the textural, lightweight hand of linen and pairs beautifully with the geometric Christopher Check series.



LEJP20-03 White



LEJP20-18 Taupe



LEJP20-33 Slate

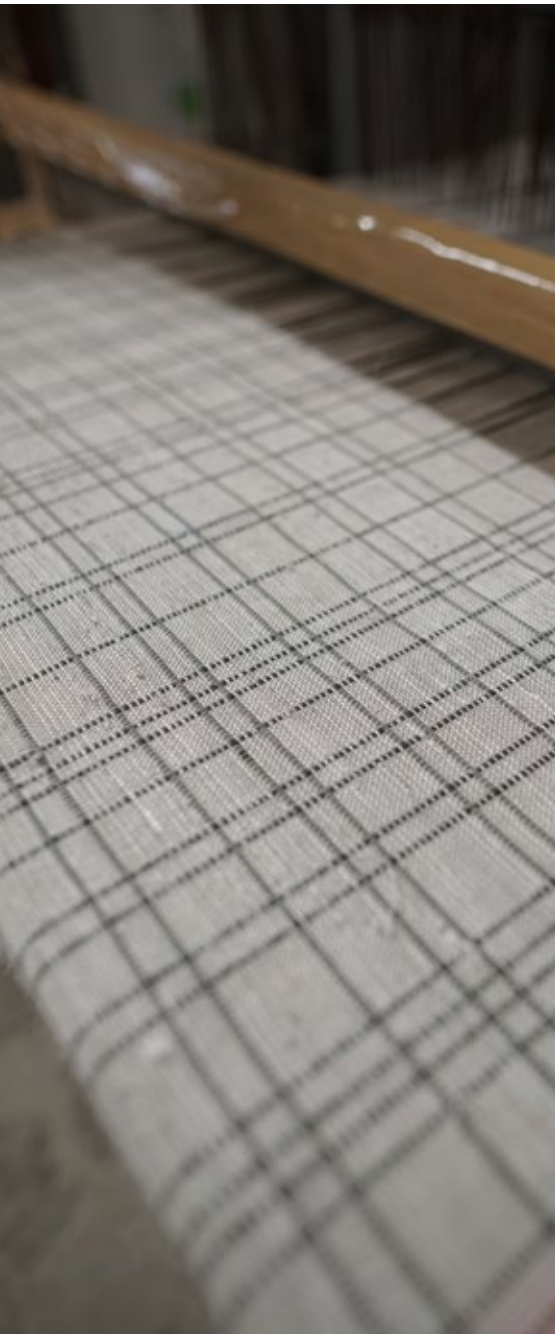


LEJP20-72 Brick

Window Price Group: 7 | Max Width: 180"
Available Styles: Roman, Roller, Drapery, Top Treatment

Wall Width: 36" (91.4cm) | Length: 8yds (7.3m)

888.582.8780 | HARTMANNFORBES.COM



JG PLAID

A fresh take on traditional plaid, strong crisscrossing pencil stripes in an irregular sequence form an intriguing dimensional look. A woodland palette of moss and linen play relaxed counterpoint to the structured sensibility.

Woven-to-Size windowcovering is intricately hand loomed of refined ramie, while handcrafted wallcovering is gravure printed atop handwoven sisal.

WINDOWCOVERING



LEJP22-12 Moss on Linen



LEJP22-78 Linen on Moss

WALLCOVERING



WLJP25-78 Linen on Moss

Window Price Group: 7 | Max Width: 180"
Available Styles: Traditional, Roller, Drapery, Top Treatment

Wall Width: 36" (91.4cm) | Length: 12yds (7.3m)

Shown: LEJP22-12 JG Plaid – Moss on Linen, Windowcovering
WLJP25-78 JG Plaid – Linen on Moss, Wallcovering

