



HARTMANN&FORBES

NATURAL
WINDOWCOVERINGS,
WALLCOVERINGS
& TEXTILES
HANDCRAFTED
FOR THE TRADE
IN EDITIONS OF ONE

“Nature is not a place to visit.
It is home.”

– GARY SNYDER



Living in our hyper-connected digital age, we spend less time outdoors soaking in nature's healing qualities. However, by designing interior spaces using organic hand-made furnishings, we can replicate the health benefits offered by nature and improve our well-being.

At Hartmann&Forbes we offer a broad collection of natural handwoven window and handcrafted wallcoverings to help you evoke this restorative mood in your design projects.



We hope you find our 2020 collection to be more delightful than ever. And thank you for making the world a more peaceful place through natural design.

Michael Jones
Founder

A handwritten signature in black ink, consisting of stylized, flowing letters that appear to read 'MJ' followed by a flourish.

CONTENTS



6

H&F
DIFFERENCE

16

DESIGNER
COLLECTIONS

MICHAEL S SMITH

26

STUDIO
CONCEPTS

TWEED

GROOVE

TATTERSALL

CABLE

36

WOVEN-TO-SIZE
COLLECTIONS

GRASSWEAVE

PAPYRUSWEAVE



112

TAILORED-TO-SIZE
COLLECTIONS

GRASSWEAVE

PAPYRUSWEAVE

COLOURWEAVE

144

FABRIC
COLLECTIONS

SOFT NATURAL

PERFORMANCE

182

NATURAL
WALLCOVERING
COLLECTIONS

GRASSCLOTH

PAPER WEAVE

SPECIALTY

220

MORE

BY-THE-YARD
TEXTILES

COLLECTION
INDEX

LIVING GREEN

A JOURNEY TO A SUSTAINABLE WAY OF DOING BUSINESS

We are intricately intertwined with our natural world. This connection generates a deep appreciation for the planet and a greater sense that we need to participate in the preservation of its treasures for future generations. We continually seek ways to minimize our impact throughout our harvesting, weaving and finishing processes, as well as drive change within our industry.

Named one of 100 Best
Green Workplaces for
eight consecutive years



#32





NATURAL FIBERS

SUSTAINABLE MATERIALS OF NOBLE CHARACTER
ARE THE BASIS OF OUR ARTISTIC MEDIUM

We begin the process of creating luxury woven products by choosing only the finest sustainable fibers, each rapidly-renewable and grown in well-managed ecosystems. Every strand is hand selected for subtle variations of color and texture.



HANDWOVEN ARTISTRY

UTILIZING THE LOOM AS OUR TOOL WE FOLLOW
TECHNIQUES REFINED OVER GENERATIONS

Our weave masters blend hand-prepared natural fibers using a complex rhythm of warps and wefts. Doing this work completely by hand, rather than machine, affords us more creative freedom to push the boundaries of weave structure and design.





DESIGN BREADTH

A TIMELESS PALETTE OF EARTHY COLOR
AND TEXTURAL NUANCE

We offer the industry's largest collection of natural, handwoven designs for your window and a unique assortment of natural handcrafted wallcoverings. Our broad range of designs presents an honest reinterpretation of nature's raw beauty. A passion for handweaving, design exploration and a lifelong love of nature continues to fuel the evolution of our collections.



WINDOW & WALL

THE INGENUITY OF THE HAND
RAISES A CRAFT TO FINE ART

With uncompromising, hand-worked detail, every piece we produce is finished to custom specifications by master crafts people using the highest-quality components. Our boutique approach enables a level of customization and workmanship unique in today's marketplace.



roman shade



roller shade



drapery



top treatments



textiles



wallcovering





MICHAEL S SMITH

A unique collection created hand-in-hand with renowned designer Michael S. Smith. The blending of Michael's historically referenced patterns in bold, simple colors, with the textural detailing expected from HARTMANN&FORBES, offers a globally-infused collection of natural handcrafted window and wallcoverings.



LEMS71-06 Ivory



LEMS71-09 Limestone



LEMS71-72 Ruby



LEMS71-57 Lapis

GRASSWEAVE [WTS]

CITY STITCH

This handwoven design is a modern interpretation based on ancient Japanese Sashiko stitching from the Edo period. A unique weave that combines functional embroidery with meticulous, decorative stitching to create a sophisticated mix of texture, color and pattern.

features a 2" plain woven border



LEMS71-54 Malachite

WALLCOVERING

KAMAKURA

Merging geometric shapes with Japanese imagery, this complex composition depicts beauty and serenity in a thoughtful, artistic way. In transposing the stenciled design to a textured grasscloth, Smith has created a layered backdrop that can coordinate seamlessly with both modern and traditional interiors.



WLMS75-42 Bronze



WLMS75-54 Malachite



WLMS75-57 Lapis



WLMS75-72 Ruby

Window Price Group: 7 | Max Width: 180"
Available Styles: Roman, Drapery, Top Treatment

Wall Width: 36" (91.4cm) | Length: 8yds (7.3m)

Shown: LEMS71-54 City Stitch – Malachite, Traditional Style Roman
WLMS75-54 Kamakura – Malachite, Wallcovering







GRASSWEAVE [WTS]

CASCADE

An elegant and sophisticated use of the traditional striation pattern, employing soft colors of handwoven threads. The vertical stitch pattern is asymmetrical and highlighted by subtle but glamorous metallic strands.



LEMS70-12 Ivory



LEMS70-55 Malachite



LEMS70-51 Limestone

WALLCOVERING

MAJORELLE

Inspired by the famous French artist Jacques Majorelle and his world-renowned garden and home in Marrakesh, Morocco, this sublime wallcovering features graphic arrangements reminiscent of architectural lattice screens found in palaces and temples from Morocco to the Middle East.



WLMS73-06 Sandstone



WLMS73-32 Celadon

Window Price Group: 7 | Max Width: 180"
Available Styles: Roman, Roller, Drapery, Top Treatment

Wall Width: 36" (91.4cm) | Length: 8yds (7.3m)

Shown: LEMS70-12 Cascade – Ivory, Old Style Roman
WLMS73-06 Majorelle – Sandstone, Wallcovering



CWMS81 Hinoki

COLOURWEAVE [TTS]

JUNSEI

Inspired by traditional Japanese screens, this refined weave is handwoven with thinly sliced bamboo, allowing the sunlight to gently filter in.



CWMS80 Matsu



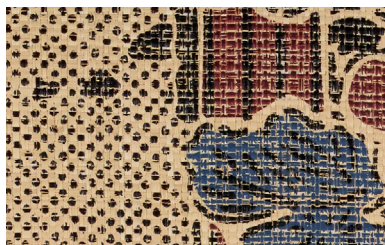
CWMS82 Tochi



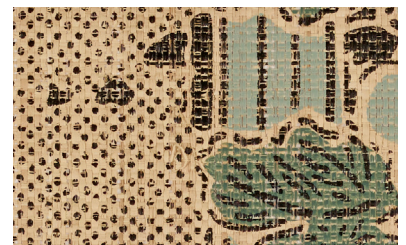
WLMS74-51 Amber

WALLCOVERING JAPÓN GARDEN

An enduring, woven wallcovering imbued with rich, bold patterns that evoke flora in unusual and unexpected ways. Inspired by antique, hand-carved abaca stencils, these designs bring depth and interest to any room. Hand-mixed, saturated pigments are printed over a neutral background to create a warm, artistic and inviting effect.



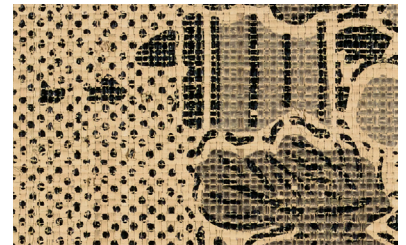
WLMS74-57 Red/Blue



WLMS74-30 Verde



WLMS74-18 Stone



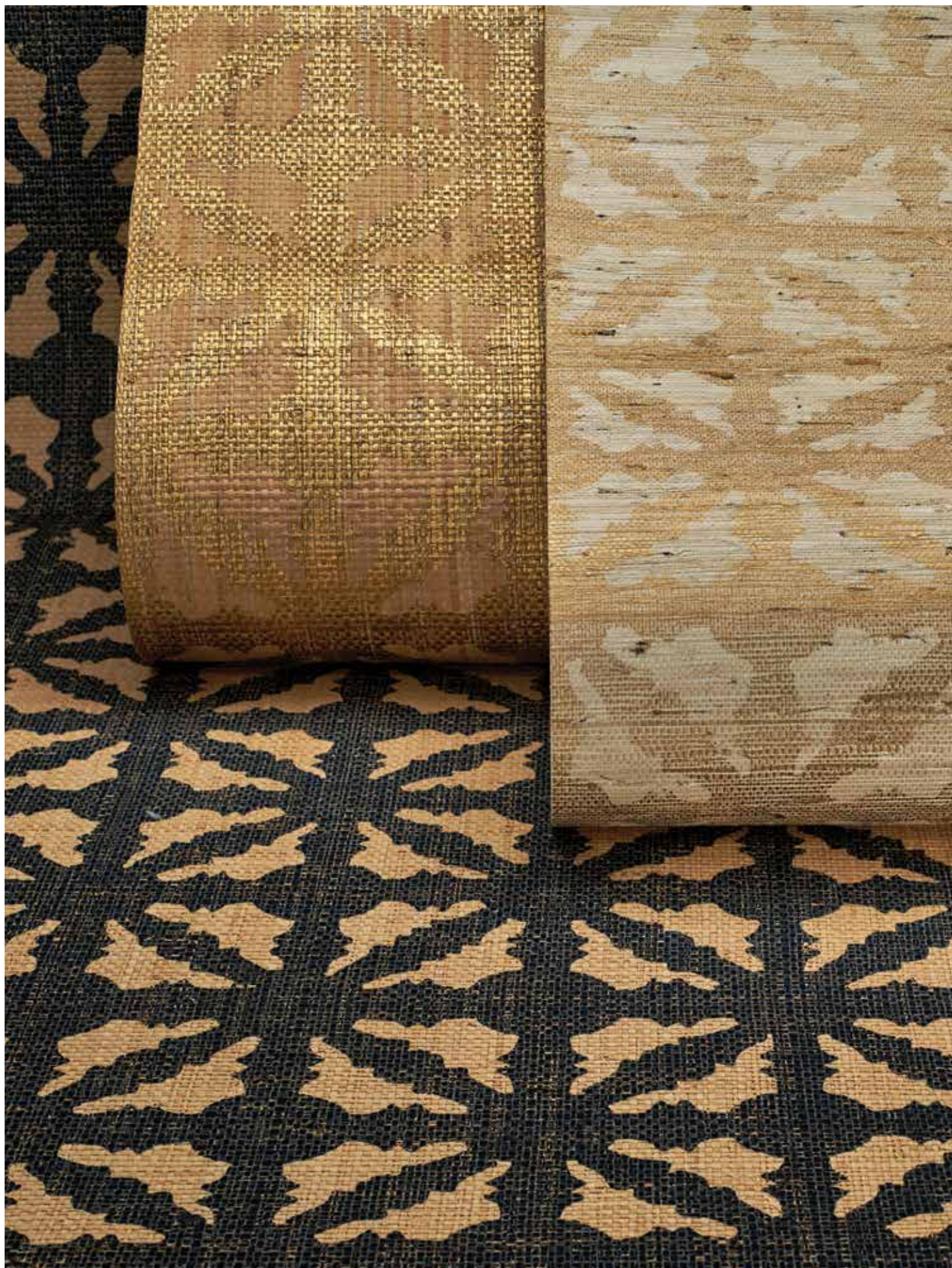
WLMS74-12 Mist

Window Price Group: 4 | Max Width: 94"
Available Styles: Roman, Roller, Top Treatment

Wall Width: 36" (91.4cm) | Length: 8yds (7.3m)

Shown: CWMS80 Junsei – Matsu, Sudare Style Roman
WLMS74-51 Japón Garden – Amber, Wallcovering





WALLCOVERING

AGRA LATTICE

Inspired by beautiful, hand-turned spindle designs used throughout Indian architecture for generations, Agra Lattice depicts a maze-like, hand-stenciled pattern with abstracts that play upon form, texture and movement.

Smith has adapted the traditional spindle motif and has reinterpreted it into a rhythmic arrangement on rich, woven wallcovering that is as meditative as it is vibrant.



WLMS72-27 Sandstone



WLMS72-51 Limestone



WLMS72-57 Azul







STUDIO CONCEPTS

AN ARCHETYPE WEAVE IN THE MAKING – A concept is an abstract notion or general idea. An archetype is an original pattern or first prototype. Studio Concepts is a fusion of these two ideas founded by artistic curiosity and aimed at presenting a grouping of individual limited-edition designs, that over time, may evolve and reside inside a broader collection.

NEW

LE4339 TWEED

Created of ramie and interweaving tones of refined gray and neutral warps, this openly checked pattern is a light and modern approach to historical tweed.







NEW
LE4642
GROOVE

Lending a vibrant and earthy uptake on mid-century modern, this upbeat and textural design of abaca fiber is complemented with hand-placed water hyacinth and a continuous warp thread of woodsy neutrals.





NEW

LE4481 TATTERSALL

Created in honor of the historical 18th century Tattersall blanket pattern, this modern perspective is composed of interwoven indigo warp threads and ramie, highlighting strong vertical lines with contrasting neutrals.







NEW
LE4587
CABLE

Inspired by centuries-old traditional African hand braiding, this textural pattern is punctuated by intricately-braided dark ramie and enlightened by playful cream warp threads.







CUSTOM [WTS] WOVEN-TO-SIZE

In this time-honored, one-of-one method, we handweave each shade on traditional wooden looms to a window's dimensions. This painstaking technique comes with a longer lead time, but delivers an exquisite loom-finished edge on shades up to 180" wide, without seams. Each shade is then hand-finished to the most exacting standards, with the highest-quality components, in our Oregon facility.

COLLECTIONS –

GRASSWEAVE [WTS]
PAPYRUSWEAVE® [WTS]





[WTS] GRASSWEAVE

WOVEN-TO-SIZE


An organic, modern mix of refined to rustic textures, crafted with artisanal technique to exquisite detail. Handwoven with sustainable blends of grass fibers, including banana stem, ramie, arrowroot, river reed, jute, abaca, vetiver, palm, water hyacinth, walingi and bamboo.



Designer – Kathleen Navarra, Navarra Design Inc | Photo – Kurt Manley

ESSENCE

This foundational weave is offered in a broad assortment of sophisticated colorways to create a shade for every room. Its refined beauty and lightweight design provides universal appeal with a pure and simple narrative.



LE3012 Sand

LE3003 Cloud

LE3006 Shell

LE3015 Muslin

LE3042 Wilderness

LE3118 Brush

LE3057 Denim

NEW | LE3139 Lark

NEW | LE3039 Fog

LE3154 Garden

LE3054 Sprig

NEW | LE3418 Linseed

LE3030 Fescue

NEW | LE3130 Bisque

LE3018 Sterling

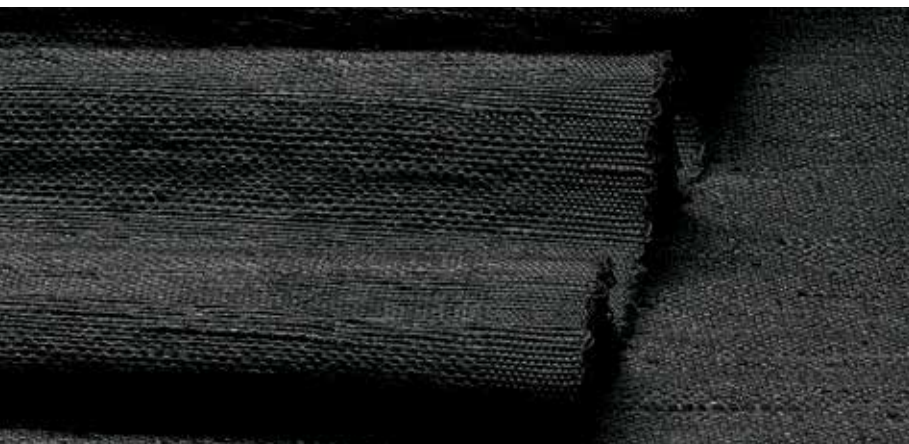
NEW | LE3009 Citrine

NEW | LE3027 Cork

LE1012 Farandine

NEW | LE3036 Ash

LE1039 Lustring



LE1006 Cambric



LE1053 Silesia



LE1062 Challis



LE1055 Sindon



LE1052 Batiste



LE1050 Sendal



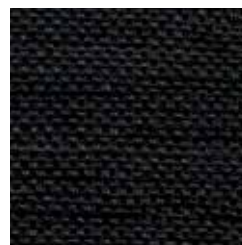
LE1015 Cambresine



LE1054 Borato



LE1084 Zephyr



LE1087 Georgette **NEW**

ELEMENTS

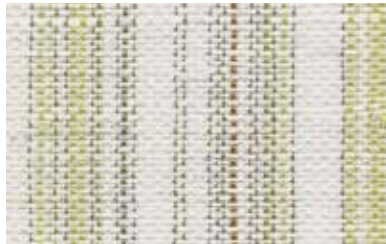
Fresh, pure and timeless, this richly refined linen-like textile offers sophisticated beauty in a wide array of colorways ranging from neutral hues to dramatic darker tones, including Georgette a new rich black.





TABARET

Influenced by vintage European linen, this handwoven textile of ramie fiber offers subtle variegated stripes in nature's hues, creating a harmonious mix of status and pedigree.



LE2630 Lawn



LE2660 Greylake



LE2657 Lagoon



LE2645 Brownstone



LE1003 Shantung



LE1051 Tulle

GLIMMER

This lustrous fine weave is ethereal, almost weightless, accented with micro hand knots that inject a pared-down luxe aesthetic.



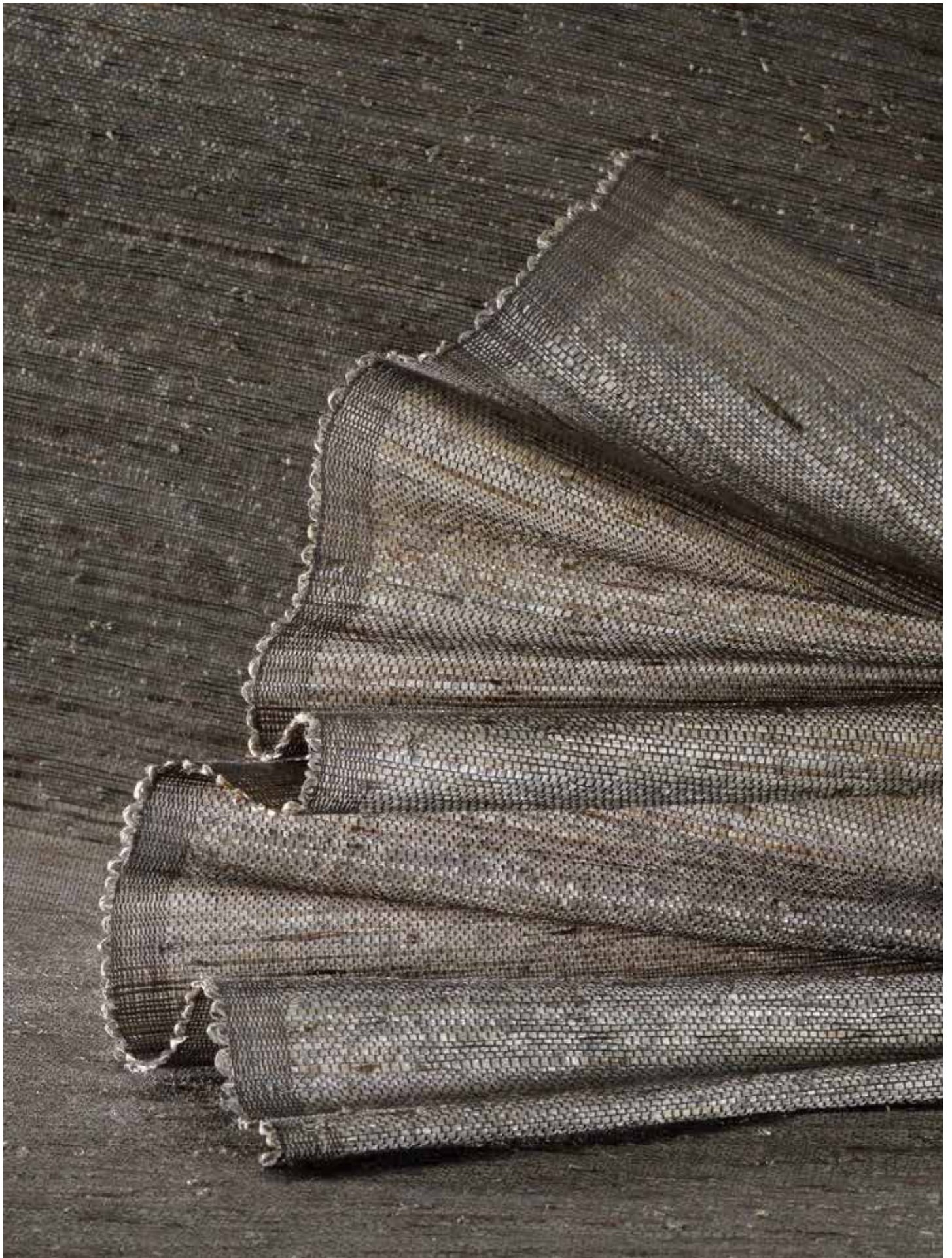
LE1303 Tamin



LE1360 Zanella

Price Group: 6 | Max Width: 180"
Available Styles: Roman, Roller, Drapery, Top Treatment

Shown: LE1360 Glimmer – Zanella, Old Style Roman





DRIFTWOOD

Inspired by the casual elegance of sun-washed driftwood, this design blends ivory with weathered hues of gold, grey and off-black.



LE1107 Utara



LE1124 Togo



LE1109 Selatan



LE1160 Sapi



LE1187 Rinca



Price Group: 6 | Max Width: 180"

Available Styles: Roman, Roller, Drapery, Top Treatment

Shown: LE1124 Driftwood – Togo, Traditional Style Roman
EW259 Geometry – Contorno, Drapery | WL364 Santa Lucia – Cypress, Wallcovering



GLISTEN

A delicate accent of silvery filaments infuses this collection with metallic that sparkles under incandescent lighting.



LE1403 Aura



LE1421 Calcite



LE1423 Nautilus





RAINFALL

To create a pleasant variance, softly reflective metallic and colored warp threads dance with white ramie weft fibers in harmonious, handwoven choreography.



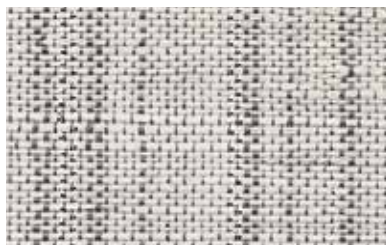
LE2024 Sunset



LE2021 Sunrise



LE2012 Dawn



LE2039 Dusk

Price Group: 6 | Max Width: 180"

Available Styles: Roman, Roller, Drapery, Top Treatment

Shown: LE2021 Rainfall – Sunrise, Splitview™ Style Roman | SH02 Linen, Sheer Liner





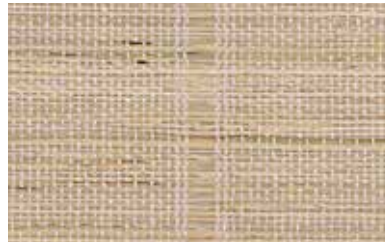
Chair courtesy – Palecek

PATHWAYS

Stripes are the hallmark detail in this collection of exquisite gauzy weaves. Presented either as open or feathered stripes.



LE1030 Vatulele



LE1032 Namale



LE1020 Awan



LE1024 Hutan







LE2203 Whitecap



LE2212 Sandle



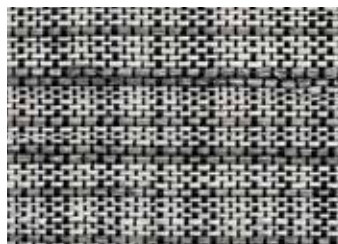
LE2215 Briarwood



LE2272 Sandstone



LE2257 Lapis



LE2260 Cobblestone



TARTAN

Artisans masterfully guide shuttles wound with handspun ramie, in variegated thicknesses, through a composition of colored threads to achieve this haberdashery-inspired tartan pattern. The occasional appearance of hand-tied knots enhances the design's tactile richness and approachability.



NEW

JAZZ

Inspired by the visual rhythm of classical guitar strings, the Jazz Series imbues the tonal qualities of a bygone era, yet leans toward the future.



LE4003 Arpeggio



LE4006 Tremolo



LE4021 Bridge



LE4060 Fusion



LE4045 Staccato



LE4087 Legato





TISSAGE

Inspired by horsehair weaving traditions, layers of chestnut, grey, caramel and cocoa are woven for a rich texture. Perfect for dramatic shading statements.



LE1218 Cremello



LE1239 Dapple



LE1242 Arabian



LE1257 Halus



LE1255 Sorrel



LE1104 Tussah



INTERWOVEN

Playing with the drama of light and dark, edge-cut reeds fade in and out of the neutral ground for a unique chiaroscuro effect.



LE1057 Seychelles



LE1083 Laut



LE1056 Camaca



LE1082 Wehi



LE1081 Tapu



LE1086 Aroha

VINES

A weave of minutely-scaled natural banana fibers is accented by horizontal ribbons of luminous arrowroot. The intricate detailing makes this weave a delight for the senses.



LE1070 Lanta



LE1072 Surin



VETIVER

The calming influence of the vetiver plant is felt in this weave. A textured ramie ground is artfully accented with bands of vetiver fibers.



LE1095 Gading



LE1096 Jahe



LE1098 Kayu



CROSSHATCH

A chic interpretation of chambray fabric, this series is woven with palm fibers and Italian-inspired spun yarn that shows evidence of its innovative construction.



LE1606 Natural



LE1609 Wheat



LE1618 Flax



LE1639 Dust



LE1642 Tea



LE1660 Thunder





NEW
WICKER

The legacy of hand-weaving wicker basketry and furnishings dates back to the ancient Mesopotamians. Inspired by this tradition, the Wicker Series offers a superior balance of woven textures and natural hues.



LE4106 Cane



LE4136 Willow



LE4187 Rattan



LE2812 Tempo



LE2839 Encore



LE2912 Beat



LE2960 Pulse

RHYTHM

Inspired by indigenous music tradition and its melodic essence, this artisanal textile series is handwoven using original foot-treadle looms. This intensive process results in patterned compositions that add a vibe of tribal heritage to an interior space.



LE2712 Chords



LE2739 Keys



LE2781 Notes

Price Group: 6 | Max Width: 100"
Available Styles: Roman, Roller, Drapery, Top Treatment

Shown: LE2781 Rhythm – Notes, Old Style Roman
LE2257 Tartan – Lapis & TBD57 Diamond – Denim Handwoven Border Trim, Pillow







LE3303 Spirit



LE3312 Charisma



LE3309 Mystique



LE3315 Karma

AURA

A complex design with a spirited sensibility, this weave of refined ramie and arrowroot creates a gentle and meditative atmosphere.



LE3387 Chakra **NEW**





MACRAME

A bohemian expression with free spirit, this uniquely woven natural textile is unassumingly elegant, offering a casual charm in its soft, muted color palette.



LE2303 Blanc



LE2306 Naturel



LE2336 Gris





ILLUMINATION

A minimalist weave with subtle sheen for nonchalant luxury. Layered shadings of ivory and misty grey offer elegance and beauty.



LE1064 Madras



LE1284 Bishan



LE1292 Pasir



LE1301 Barege



LE1336 Samet



LE1310 Railay

TRESTLE

Lending a contemporary charm to any room, this weave captures attention with memorable stripes woven in tone-on-tone arrowroot.





Designer – Tiffany Home Design | Photo – Gregory Dean

INTERWOVEN II

This intricate open weave evokes contemplation and relaxation with its nuanced palm, ramie and soft yarn textures.



LE2503 Imperial



LE2521 Delmar



LE2515 Solana



LE2536 Clearwater





INTERBRAID

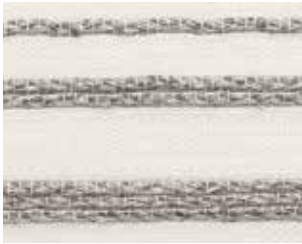
Intricately handwoven ramie braids in pale grey and golden wheat delicately rise above a finely woven field. The unique horizontal pattern has a gentle rhythm which lends a natural restfulness and comfort to a room.



LE1906 Blonde



LE1903 Champagne



LE1939 Ash



LE1960 Heather





THATCH

The beautiful texture of a thatched roof is the inspiration for this series, a medium-weight textile offering privacy and a casual point of view to an interior.



LE1703 Wrafton



LE1100 Cassimere



LE1805 Buckskin

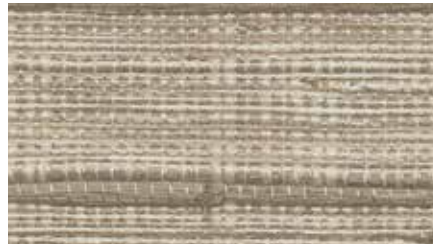


MESA

Inspired by Southwestern weaving traditions, palm and ramie fibers in modern earth tones mingle with hand-placed water hyacinth strips for textural dimension. This tapestry-like design adds luxurious layers of warmth and artistic beauty to an interior.



LE2121 Adobe



LE2115 Pueblo





LE1123 Kocoma



LE1125 Qamea

CABANA

Densely-woven contrasting fibers in subtle hues create a relaxed and approachable weave in sand tones that evoke a laid-back island vibe.



LE1130 Palm

SHALE

Referencing the raw beauty of high desert geology, naturalistic color bands are stacked to achieve a strie effect. Arrowroot fibers in shades of desert sand combine for tonal beauty.



LE1506 Sand



LE1512 Dune



LE1530 Sage



LE1317 Berani



LE1169 Moorea



LE1132 Motu

WOODSTOCK

Naturalistic designs in deep woodland colors of walnut, moss and straw. This handsome collection of weaves evokes a cozy mountain feeling.



INTERLACE

Soliciting an interplay between light and fiber, this innovative warp-yarn structure and gauze-like ramie fibers candle incidental light in a graceful dramatic dance.



LE3209 Tawny



LE3215 Ember



LE1800 Bouclé



LE1300 Cire

HERITAGE

An update on a traditional grassweave design, the subtle sheen and dressy softness of arrowroot provides a seductive allure.



LE1305 Atlas



LE1860 Armure



VINTAGE

Relax with a timeless grassweave pattern that blends effortlessly with contemporary and traditional interiors alike. The matte finish demonstrates a natural and organic nature.



LE1803 Parchment



LE1201 Frieze



LE1155 Cypress



LE1151 Chamois



LE1152 Marcello



LE1150 Leno



LE1203 Bistre



LE1154 Cretonne

AUSTRIAN

This classic European shade design is reinterpreted in natural fibers to become a modern classic. The wide-warp treatment allows hand-knotted palm or arrowroot fibers to drape in an elegant scalloped pattern.



LE1300w Cire 5" warp

PG6



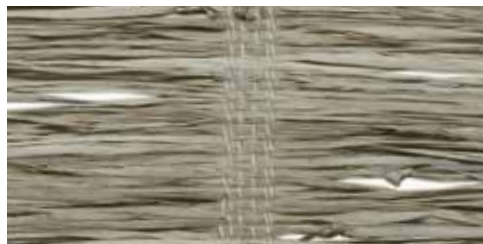
LE1151w Chamois 5" warp

PG5



LE1154w Crentone 5" warp

PG5



LE1150w Leno 5" warp

PG5

HAVEN

Ramie, prized for its beauty and softness, is in full effect in this wondrously airy weave. A delicately neutral palette is offered from warm white to golden straw.



LE1200 Canera

PG6



LE1207 Tiaki

PG6



LE2409 Root



LE2439 Stem

EARTHEN

Handwoven of vetiver, a hearty organic root fiber with a warm woody scent, this weave is grounded and earthy offering interiors a complex textural identity that is exotic, yet modern.



LE2487 Seed



RUSTICA

Primitive and rustic, this textured weave features natural reeds alternating with a woven textile, giving these designs a pleasing heartiness to block sun and impart a comfortable feeling to any décor.



LE1253 Burrel



LE1250 Calico





[WTS]
WOVEN-TO-SIZE

PAPYRUSWEAVE

An unassuming, refined elegance defines this modern collection of hand-loomed wood-pulp fibers. Designed in textural patterns with soft tonal hues that invite a serene and tranquil mood to interiors.

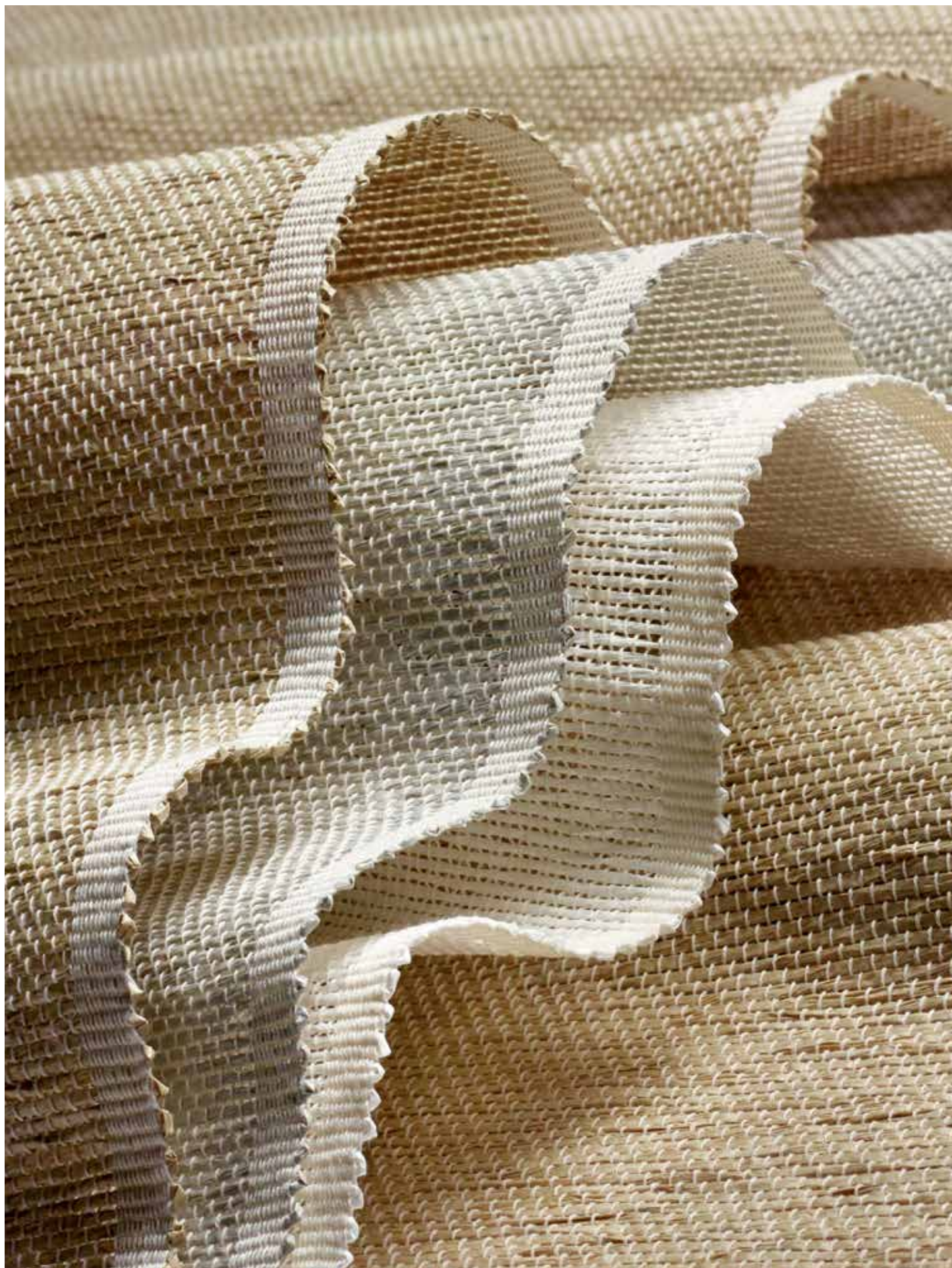
NEW

AWARENESS

With a simple and understated elegance, this design connotes a rustic simplicity and stillness.







CLARITY

This linen-like weave lends quiet sophistication to a room with its exquisite refinement. Invitingly soft and supple, it comes in an elegant spectrum of hushed neutrals from Pure White to Steady Graphite.



PE600-03 Pure White



PE600-06 Sacred Desert



PE600-09 Serene Sand



PE600-30 Wise Sage



PE600-36 Placid Grey



PE600-60 Steady Graphite

Price Group: 4 | Max Width: 150"

Available Styles: Roman, Roller, Drapery, Top Treatment

Shown: PE600-03 Clarity – Pure White and U06 8000 – Ivory, Dual Shade – Roller | Roller
WL421-15 Monterey – Tide Stone, Wallcovering



PE601-06 Soothing White



PE601-30 Gentle Green



PE601-36 Soft Grey



BALANCE

A lightweight weave that effortlessly blends a chalky-white ground with tones of soft cream, grey or green, resulting in a heathered look that is gentle and approachable.







PE602-03 Divine White



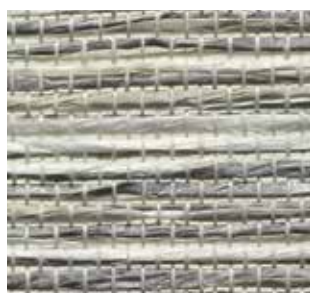
PE602-09 Blended Raffia



PE602-42 Infused Bark



PE602-51 Healing Agate



PE602-60 Diverse Grey



PE602-63 Noble Slate



HARMONY

This captivating design attracts considerable attention with its unique variegated pattern. Pulp fibers, in harmonious hues, are woven together to create a medium-weight shading option that lends character and contrast to a room.



ENLIGHTENMENT

Lightweight and loosely structured, this weave filters sunlight without obscuring outside views. Delicate mottling makes the sun-bleached palette even more intriguing.



PE604-03 Inspired White



PE604-06 Restful Ivory



PE604-09 Relaxed Sand



PE604-30 Peaceful Green



PE604-36 Contented Grey



PE604-60 Vibrant Grey





TRANQUILITY

Reminiscent of Japanese screens, this open framework of line and space is created using two different colored pulp weft fibers in combination with stylized warp threading. The artistry of the weave and color selection reflects an understated, modern sensibility.



PE605-03 Cozy White



PE605-36 Passive Grey



PE605-30 Easy Green



PE605-09 Quiet Beige



PE605-60 Cool Grey

SERENITY

A design traditionally woven in grass fibers, this textural weave is thoughtfully updated in contemporary pulp fiber with a striking 3.5" warp. Its airy woven fibers and earthy color palette set a contemplative mood.



PE603-03 Calm White



PE603-06 Mindful Ivory



PE603-09 Creative Sand



PE603-30 Mellow Green



PE603-36 Sulky Grey



PE603-60 Tranquil Grey



PE603-21 Blissful Bark



PE603-63 Warm Slate



PE603-15 Kind Grey

Price Group: 4 | Max Width: 150"
Available Styles: Roman, Drapery, Top Treatment

Shown: PE603-30 Serenity – Mellow Green, Old Style Roman
EW109-12 Cords – Burlap, Drapery





SERENITY II

Offering the same color and texture as the 3.5" warp, this wider warp is a timeless design, allowing the fiber to drape in a soft scalloped pattern.



PE603-03w Calm White



PE603-06w Mindful Ivory



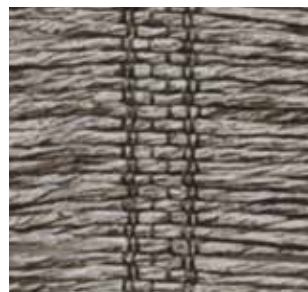
PE603-09w Creative Sand



PE603-30w Mellow Green



PE603-36w Sulky Grey



PE603-60w Tranquil Grey



PE603-21w Blissful Bark



PE603-63w Warm Slate



PE603-15w Kind Grey





IN-STOCK [TTS]

TAILORED-TO-SIZE

To accommodate shorter lead times, we handweave our natural fibers into roll goods which are inventoried in our Oregon finishing facility. Here, artisans tailor the weave to the specified window size and hand finish the edges — again, crafting each shade on a one-of-one basis.

COLLECTIONS –

GRASSWEAVE [TTS]
PAPYRUSWEAVE® [TTS]
COLOURWEAVE® [TTS]





[TTS] GRASSWEAVE

TAILORED-TO-SIZE

This timeless, textured collection, made of legacy natural fibers, has a relaxed and comfortable charm. Jute, bamboo, river reed and sea grass are woven in a broad range of designs, from Japanese Miyabi inspired refinement to bold and chunky classics.



No.91w Winter Linen PG4

LINEN

Crisp, minimal and delightfully modern, this series has the natural approachability of linen fabric. Offered in a full color palette to complement a wide range of interior color schemes.



No.91s Summer Linen PG3



No.91p Palm Linen PG3



No.91r Russet Linen PG4



No.91d Dusk Linen PG4



ESSENTIA

Woven jute fibers distilled to their essential beauty, this lightweight textile is available in a range of delicately heathered earth tones.



KW110 Asa



KW114 Haru



KW118 Ishi



KW116 Ame



KW112 Kumo



Design – Lisa Kanning Interior Design | Photo – Gibeon Photography

BLOSSOM

A micro-fine jute textile offered in two neutral colorways to complement an array of interior styles.



KW95 Lotus Blossom



KW92 Pacific Basin



BASIN

Elegant and finely tailored, this weave offers quiet serenity and soothing tones of sandstone, dappled grey and cocoa brown.



No.93 Yangtze Basin



No.92 Mu Basin



No.95 Saru Basin



No.98 Fuji Basin



No.90 Kanto Basin





No.13n Natural Prairie
Max Seamless Width: 96"

PG3



No.13m Morning Prairie
Max Seamless Width: 96"

PG3



No.13s Shadow Prairie
Max Seamless Width: 96"

PG3

PRAIRIE

A prairie landscape of light and dark shading is translated into a jute weave interspersed with wild river reeds.



No.25r Bamboo Rustic w/Reed
Max Seamless Width: 120"

PG1



BAMBOO

A unique and differentiated bamboo design that displays creative panache with a combination of flat and rounded fibers woven with a double warp pattern.

TAKI

Sustainably cultivated premium bamboo strips are hand laid and woven in a minimalistic pattern offering privacy with style.



No.31r Taki Rustic

PG1



No.31s Taki Shell

PG1



No.31 Taki Caramel

PG2







[TTS] PAPYRUSWEAVE

TAILORED-TO-SIZE

A well-traveled collection of wood-pulp fiber designs, celebrating stories and techniques found in global weaving communities. Our modern interpretations of historical patterns are influenced by Asian silks, Navajo weaves, European tapestries, Ottoman rugs and other weaving heritages.





PW50 Snow Lantern

ZEN

Zen philosophy suggests uncluttered simplicity will stimulate tranquility. The Zen series adorns this philosophy with its refinement.



PW52 Stepping Stone



PW53 Koi Pond

ARMENIA

Inspired by the cultural transformation of the Persian empire, the Armenia series plays with the drama of light and dark pulp fibers to influence the mood of a room.



PW101s Sumac



PW101c Cattail



PW101e Emmer



PW101t Thistle





WOOLEN MILL

The value of woven wool blankets dates back to the earliest expeditions across the American West. Inspired by this legacy, the Woolen Mill series offers a superior balance of rustic textures and natural colors.



PW157-09 Buff



Design – Domplere LLC | Photo – John Armich



PW157-06 Ecru



PW157-36 Heathered



PW157-45 Henna



PW157-66 Bruine



BASKETRY

Ranging from highly functional to artistic masterpieces, basket weaving is an art form that spans cultures around the world. The Basketry series draws on this functional expression with five wide-warp designs in a neutral palette.



PW158-03 Blanched



PW158-09 Fawn



PW158-36 Dusty



PW158-45 Bister



PW158-66 Cocoa





PW10w Pearl Silk PG2
Max Seamless Width: 72"

SILK ROAD

When Chinese silk was first discovered, it became a treasured commodity that merchants would travel far and wide selling to wealthy rulers and nobility. The Silk Road series emulates these rich textures valued across the historic trade route.



PW10b Antique Silk PG2
Max Seamless Width: 72"



PW10p Porcelain Silk PG2
Max Seamless Width: 72"



PW10t Tyairo Silk PG2
Max Seamless Width: 72"

PHARAOH

As early as 4000 BC, ancient Egyptians would pound and weave papyrus plant fibers to create paper. The Pharaoh series pays tribute to the ancient craftsmen who created the pulp fiber to record the legacies of the wealthy.



PW94w Cotton PG4
Max Seamless Width: 96"



PW94b Sahara PG4
Max Seamless Width: 96"



PW94g Ibis PG4
Max Seamless Width: 96"



PW89e Everest



PW89L Lhotse



PW89m Makalu



PW89a Annapurna

HIMALAYA

Himalayan artisans have been crafting woven rugs since the first Buddhist temples were built in the early Gupta period (4th century AD). Buddhist monks used natural fibers and natural dyes to create simple yet spiritual designs, similar to that of the Himalaya series.



The background of the entire page is a close-up photograph of bamboo blinds. The blinds are made of horizontal bamboo strips, with some sections being a darker brown and others a lighter, natural tan color. The strips are held together by vertical cords, creating a woven texture. A white rectangular box is overlaid on the upper left portion of the image, containing the brand name and descriptive text.

[TTS] COLOURWEAVE

TAILORED-TO-SIZE

An art-infused portfolio of weaves made from the inside peel of sustainable bamboo. Custom painted-to-order by local artisans in modern and traditional matchstick patterns. Available in standard or custom colors.



MODERN

A handcrafted double warp updates this traditional weave to a clean contemporary aesthetic. Woven with sustainably sourced bamboo, this design makes a crisp architectural statement.



CW70d Frost



CW29d Quartz



CW09d Sand Dollar



CW71d Sand Dune



CW72d Stone



CW36d Park Avenue

PAINTS



CW70 Frost PG4



CW29 Quartz PG4



CW09 Sand Dollar PG4



CW71 Sand Dune PG4



CW72 Stone PG4



CW36 Park Avenue PG4

STAINS

CLASSIC

An interior design classic, bamboo shades gently filter sunlight with low-key natural beauty. This design features slender-grained bamboo reeds in painted tones.



CW45 Bolivian Maple PG3



CW46 Peruvian Walnut PG3



CW47 Brazilian Teak PG3



CW48 Chilean Cherry PG3

CUSTOM COLOURS

Custom painted to order in modern and traditional matchstick patterns to match the room's colors, furnishings or cabinetry.





CW49 Minkwood

WOODLAND

An exquisite layer, Woodland pairs beautifully or can anchor a window setting to create an instant refuge of relaxation. Colorways stained in warm hues of rustic timbers and woody bark.



CW50 Brickwood



CW51 Bark







SOFT NATURAL FABRIC

A fresh translation of textural classics, the natural fabric collection offers hints of the exotic, while remaining grounded in the modern movement. Loomed in some of the world's oldest and most revered textile mills, fibers are carefully spun and dyed to a rich and earthy color palette.



Many of our linens carry the Masters of Linen mark, which guarantees excellence and 100% European traceability at each stage of processing.

NEW
SAHARA

Resembling windblown desert sands, this luxury linen exhibits a delicate rippling of soft color favoring the natural beauty of the desert. (shown railroaded)



Price Group: 4 | Max Seamless Width: 114"
Available Styles: Roman, Top Treatment

Shown: EW150-12 Sahara – Plateau, Flat Style Roman
WL424-03 Baja – White Sands, Wallcovering





NEW

MIRAGE

Heat reflecting from the barren desert floor delivers playful light refraction. The organic pattern of the Mirage Series captures this seemingly random effect.



EW149-03 Glint



EW149-09 Glow



EW149-12 Luminous



EW149-30 Echo



EW149-36 Illusion



EW149-79 Phantom



WEATHERED

The natural stone-washed palette of this soft, medium-weight linen delivers an easygoing attitude embodying a lived-in, carefree lifestyle.



EW104-12 Limestone **NEW**



EW104-18 Sandstone



EW104-32 Moonstone **NEW**



EW104-60 Graystone



EW148-12 Earthen



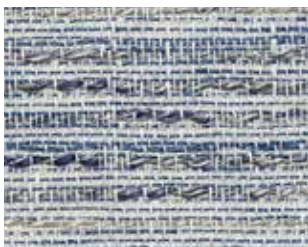
EW148-39 Root

FIELDS

A perfect expression of harmony in design. This linen beautifully blends two distinct textures into one evocative pattern. Gentle earth tones and visual texture from vertical warp fibers evoke images of undulating flax fields at harvest.



EW148-51 Bloom



EW148-57 Petal



EW148-84 Peat





RIBBED

With a raised pinstripe pattern, this sheer linen brings casual chic to an interior. The multi-color thread detail offers a dynamic and differentiated look.



EW105-06 Buff



EW105-60 Denim



EW109-06 Cotton

CORDS

Elegance with a rustic twist, this design features tufted cords artistically embroidered onto a heavy linen ground. As wearable as fashion, this contemporary textile will dress any window in chic style.



EW109-12 Burlap

ARBORETUM

With an elegant, vintage feel, this sheer design layers a charming abstract leaf motif on a warm cream backdrop.



EW108-21 Bask



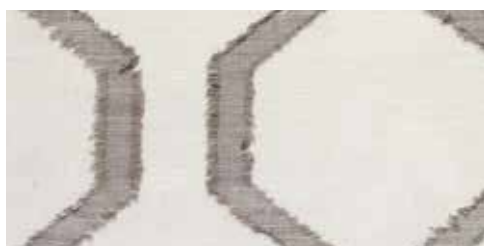
EW108-60 Shade







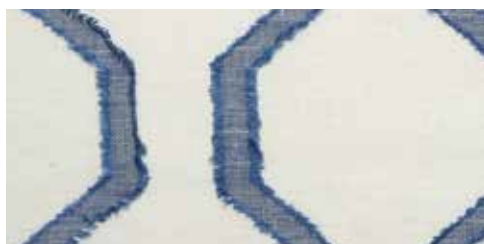
EW257 Angulo



EW256 Praca



EW259 Contorno



EW258 Moldar



GEOMETRY

A breezy lightweight linen that captures a modern geometric vibe. Offered in misty neutrals and blue, this hypnotic pattern of abstract ogees comes together to make a big impact.



Price Group: 5 | Max Seamless Width: 53"
Available Styles: Roman, Top Treatment

Shown: EW259 Geometry – Contorno, Drapery | LE1124 Driftwood – Togo, Old Style Roman
WL364 Santa Lucia – Cypress, Wallcovering

STRIE

An inspired melange of linen threads are loomed into an elegant heathered weave.

This sheer linen has a chic quality that elevates the style of a room.



EW147 Lagoa
Max Seamless Width: 55"

PG4



EW141a Andari
Max Seamless Width: 50"

PG3

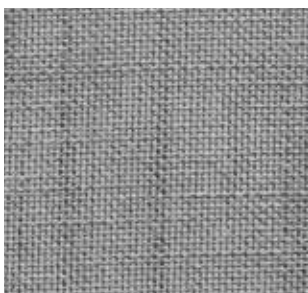


EW141t Tijura
Max Seamless Width: 50"

PG3

BRUSHED

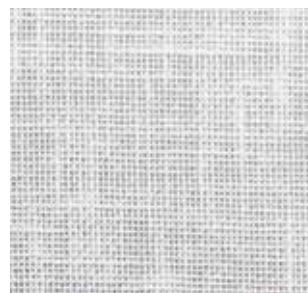
A durable lightweight poly/cotton sheer milled in France. Offered in a range of popular neutrals that work in harmony with any decor.



EW91m Merano



EW91g Genoa



EW91p Pisa



EW144b Balem



EW144n Natal



EW144o Ounda



EW144r Recliffe

SHEER STRIPE

An open-weave striping adds visual interest in this sophisticated sheer linen. Offered in a contemporary neutral palette with tonal heathering.





EW140r Rocha



EW140L LeBlon



HUED STRIPE

Linear and airy, this relaxed linen features broad stripes in three complementary tones for a subtle color-block effect. The Hued Stripe series complements any interior with style and ease.



Design – Brady Design | Photo – Nick Johnson

BOUCLE

A stunningly open weave that allows light to flood through its airy looped knit. Crafted of sumptuous Italian cotton/linen, this fabric has a weight and hangs beautifully for drapery or roman shades.



EW266 Crochet



EW262 Linsey



EW260 Etamine



EW264 Raschel

CHALLIS

Custom woven by a centuries-old Scottish textile mill, these fine woolens combine a sumptuously soft hand and exquisitely smooth drape. With their airy basketweave design and natural warmth, these woolens offer a welcoming interior backdrop.



EW214 Sagathy



EW210 Delaine



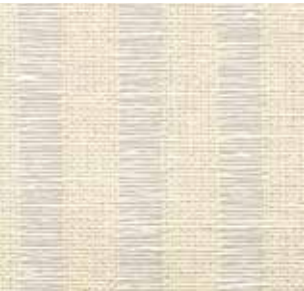
EW212 Tamis





RIDGED

As deceptively simple as it is versatile, this tailored stripe design is interpreted in a classic palette of muted taupe, ivory and white.



EW146a Amapa PG2
Max Seamless Width: 55"



EW32f Frejus PG3
Max Seamless Width: 50"



EW32b Biot PG3
Max Seamless Width: 50"



EW146f Fortaleza PG2
Max Seamless Width: 55"

PLAID

A traditional windowpane check pattern is masterfully adapted in a striking linen weave. A heavy, coarse thread woven in the weft, gives this fabric tactile interest and contemporary character.



EW145s Sao' Luis



EW145m Marceio





WHEAT

Inspired by flax fields in bloom, this sturdy linen/cotton blend captures pastoral beauty in all its glory, and transforms a window setting into an enchanted focal point.



EW234 Vela



EW233 Arropa



EW235 Pradlo

Price Group: 4 | Max Seamless Width: 50"
Available Styles: Roman, Top Treatment

Shown: EW234 Wheat – Vela, Drapery
LE1303 Tamin, Old Style Roman



LEAF

Reminiscent of a pencil sketch, this sturdy hemp/cotton blend captures abstract flora in an easy, non-linear pattern. The stylized design of floating leaves and vines are artistically rendered in a tone-on-tone design.



EW283 Lillieline



EW281 Bloemen



EW285 Blodau



ENTWINED

Soft, silk-like fabric frames meandering abaca fibers for an interesting light and texture play. Iridescent horizontal panels of gold and silver add luster and glamour to a room.

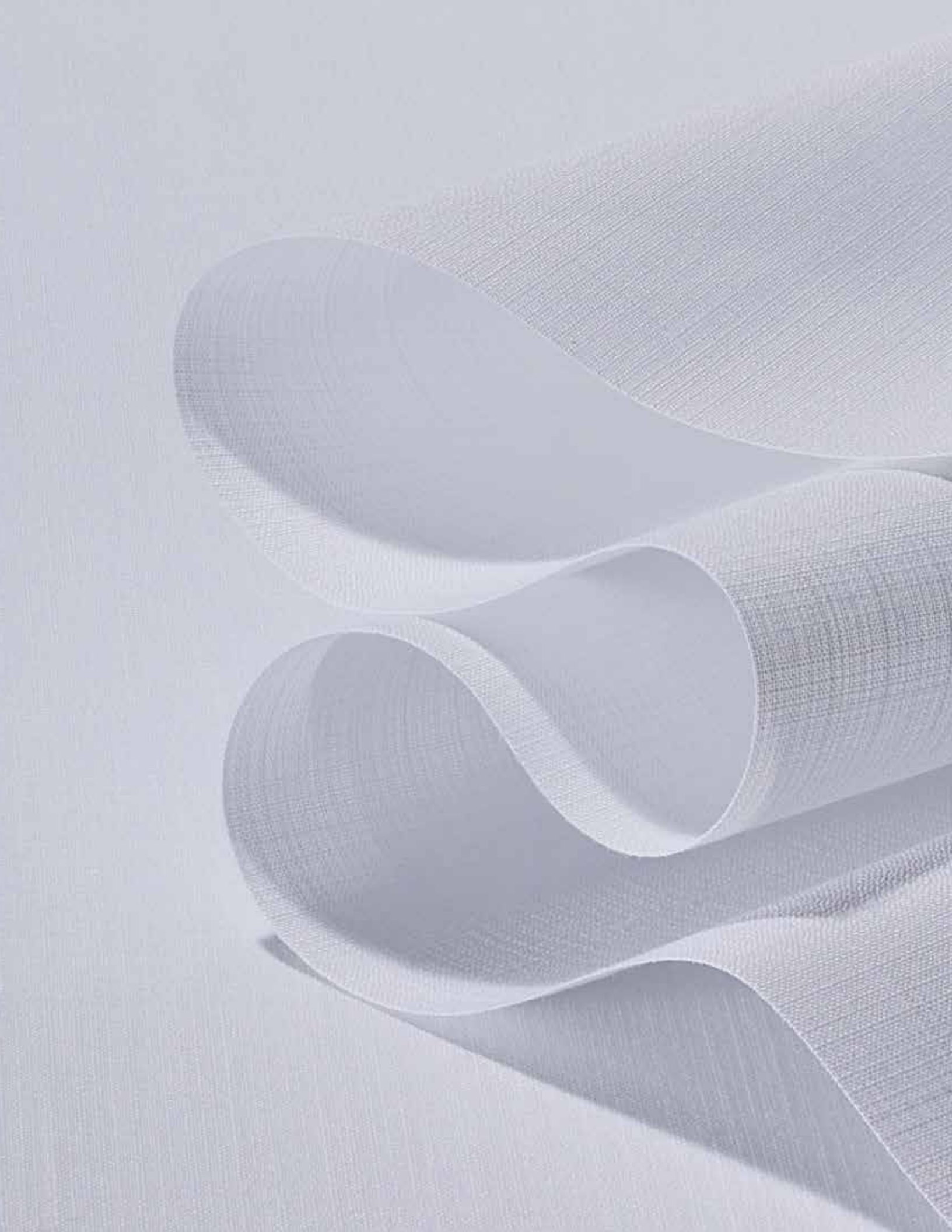


EW201 Lumen



EW202 Candela







PERFORMANCE FABRIC

A collection of designs from man-made fibers woven to achieve peak performance characteristics including heat and glare reduction, UV filtration and privacy. Fabrics are durable, meet or exceed commercial fire standards and are virtually maintenance-free.

COLLECTIONS – PRIVACY FABRIC | SOLARSCREEN



PRIVACY FABRIC

SHEER

This sheer privacy fabric provides ease of handling and care. With a linen-like texture, it softly filters light, while providing a natural look.



PFSH01 Soft White
Max Seamless Width: 114"

PG2



PFSH02 Linen
Max Seamless Width: 114"

PG2



PFSH03 Khaki
Max Seamless Width: 114"

PG2



PFSH06 Asher
Max Seamless Width: 114"

PG2

PRIVACY FABRIC

TRANSLUCENT

Translucent privacy fabrics allow the warmth of the sun's glow with complete privacy.



PFTR10 Muslin
Max Seamless Width: 78"

PG1



PFTR11 Gabardine
Max Seamless Width: 78"

PG1



PFTR12 Worsted
Max Seamless Width: 78"

PG1

PRIVACY FABRIC

8000

A refined texture, with 5% Openness.
Displays a soft contemporary design
which coordinates beautifully with our
natural textiles.



U03 White



U06 Ivory



U27 Shell



U36 Dove Grey



U18 Khaki



U12 Taupe



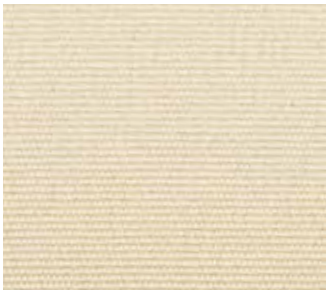
P62 White



P63 Birch

PRIVACY FABRIC
7000

A uniquely designed Blackout fabric that provides total light blockage when complete room darkening is needed. With a range of decorative colors, the look and feel of rich cloth with a PVC-free composition.



Q57 Wheat



Q09 Tan



Q58 Mushroom



V39 Graphite



Q36 Light Grey



Q87 Black **NEW**

PRIVACY FABRIC

9000

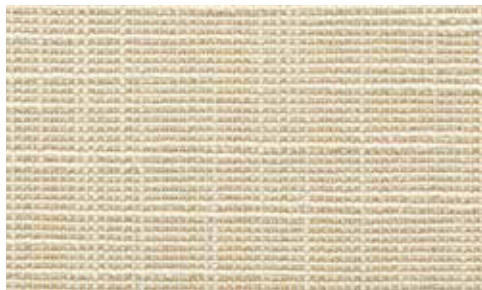
A modern textured design that offers total light blockage when complete room darkening is needed. Inherently blocks heat loss and reduces UV transmission.



G03 Snow



G06 Natural



G09 Wheat



G15 Smoke

PVC free

CONFIDENCE IN TEXTILES
Tested for harmful substances
according to Oeko-Tex® Standard 100
100% certified

Price Group: 3 | Max Seamless Width: 118"
Available Styles: Roller, Top Treatment

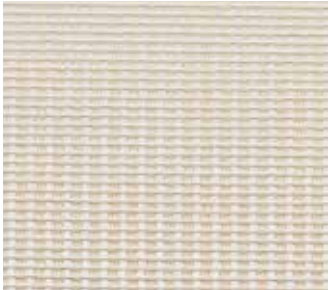
Shown: LE3054 Essence – Sprig and G03 9000 – Snow, Dual Shade – Roman | Roller
TBC55 Chevron – Sprig, Handwoven Border Trim



P01 Pearl White

SOLARSCREEN
3000

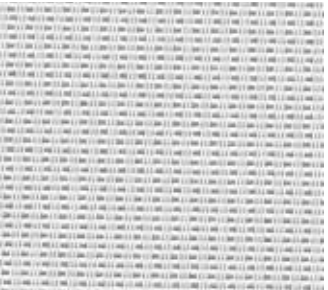
Combining vinyl coated fiberglass and polyester yarns, Series 3000 is woven into a rib design for a distinct look and color palette. The 14% openness lets in more natural light while providing excellent outward visibility.



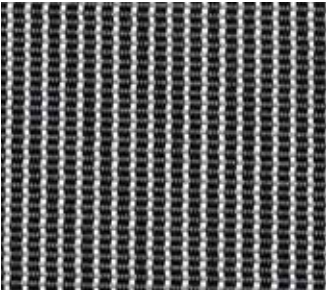
Q17 Sand Dollar



Q01 Mushroom Sand



V01 Pale Grey



V02 Ninja Grey

SOLARSCREEN

4000

This woven design combines the durability of vinyl coated polyester with the latest in green PVC technology. This fabric offers 5% openness.



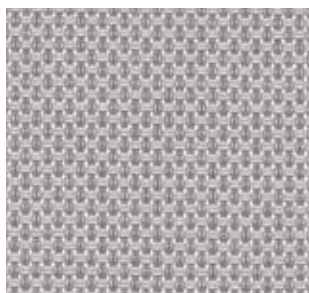
P06 Chalk



P07 Alabaster



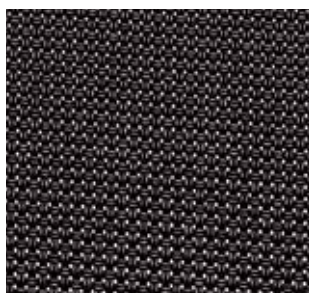
Q12 Pebblestone



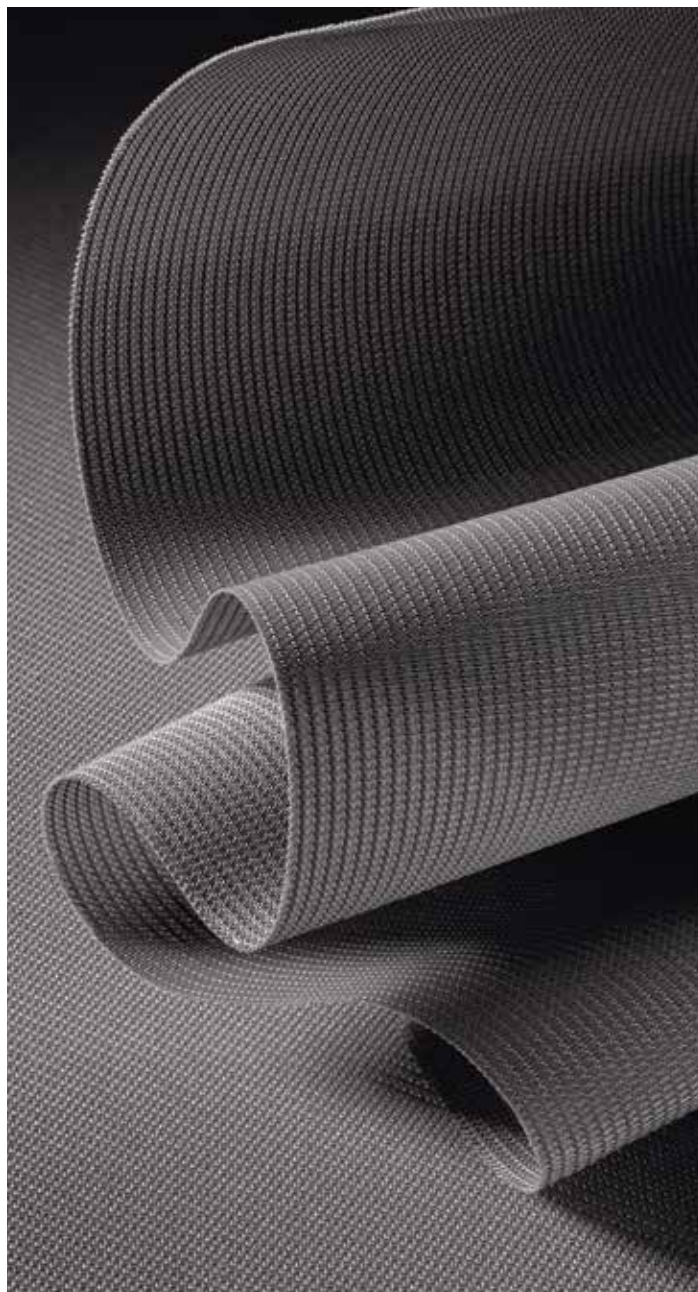
V07 Pewter

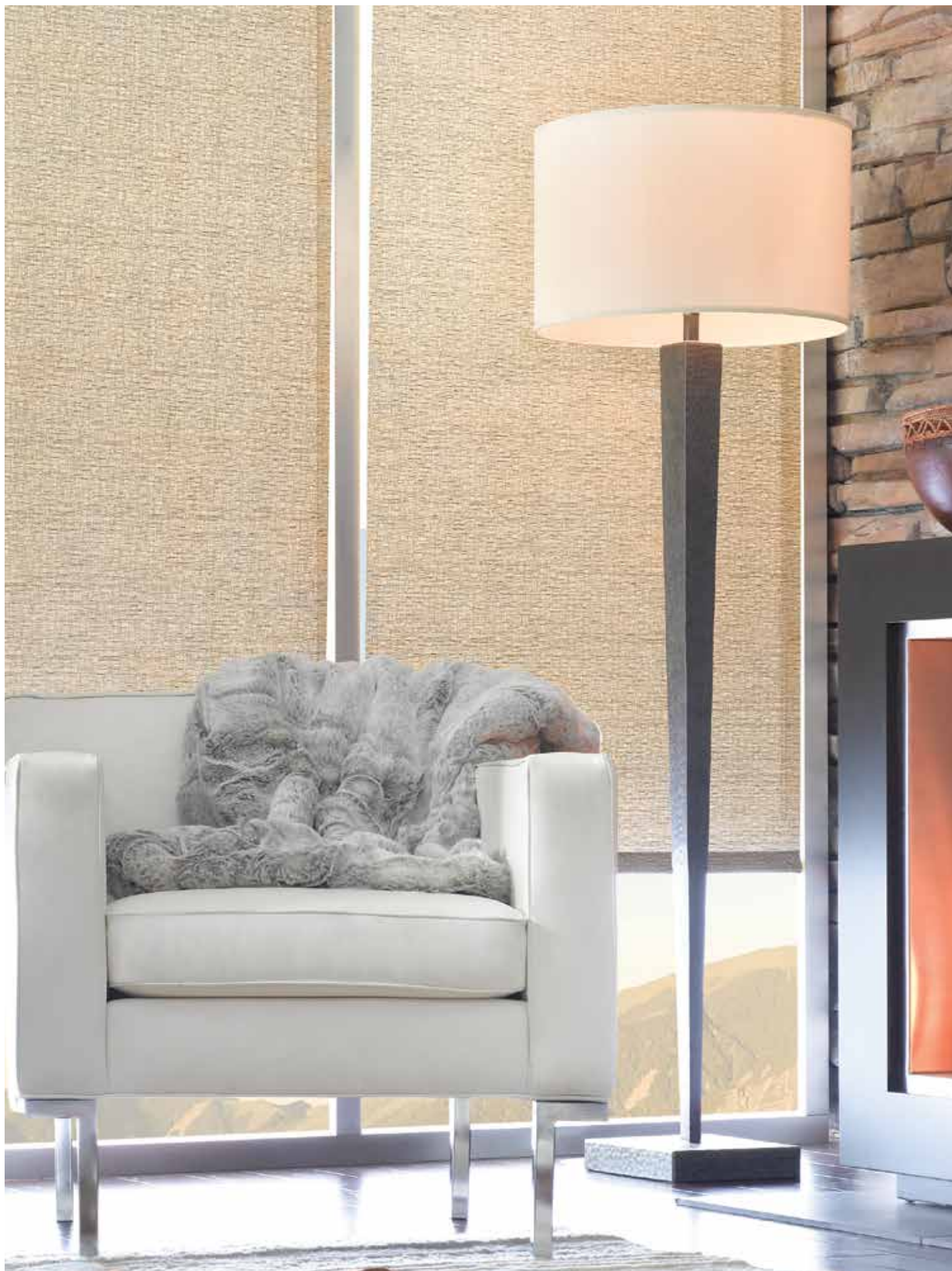


Q16 Tobacco



V10 Ebony





SOLARSCREEN

5000

This jacquard fabric design combines rich, textured yarns with traditional patterns in natural rich earth tones. Woven from vinyl coated polyester and uncoated polyester yarns, these fabrics are as durable as they are beautiful.



SW5060 Matsutake
Openess: 10%



SW5089 Enoki
Openess: 3%



SW5046 Morrell
Openess: 7%



SW5015 Crimini
Openess: 10%



SW5092 Porcini
Openess: 5%





NATURAL WALLCOVERING

Sustainably cultivated and rapidly renewable materials are hand woven or crafted, paper backed and trimmed for the wall. The range of neutral colors, natural textures and timeless designs complement any residential, commercial or hospitality space and reflects the personality of the region that inspired it.

NEW
BAJA

Resembling the majestic sandy coastlines in the summertime, the Baja Series radiates with a warm and inviting pale, sandy-patina unique to natural fibers such as mother of pearl, raffia and waterlily.



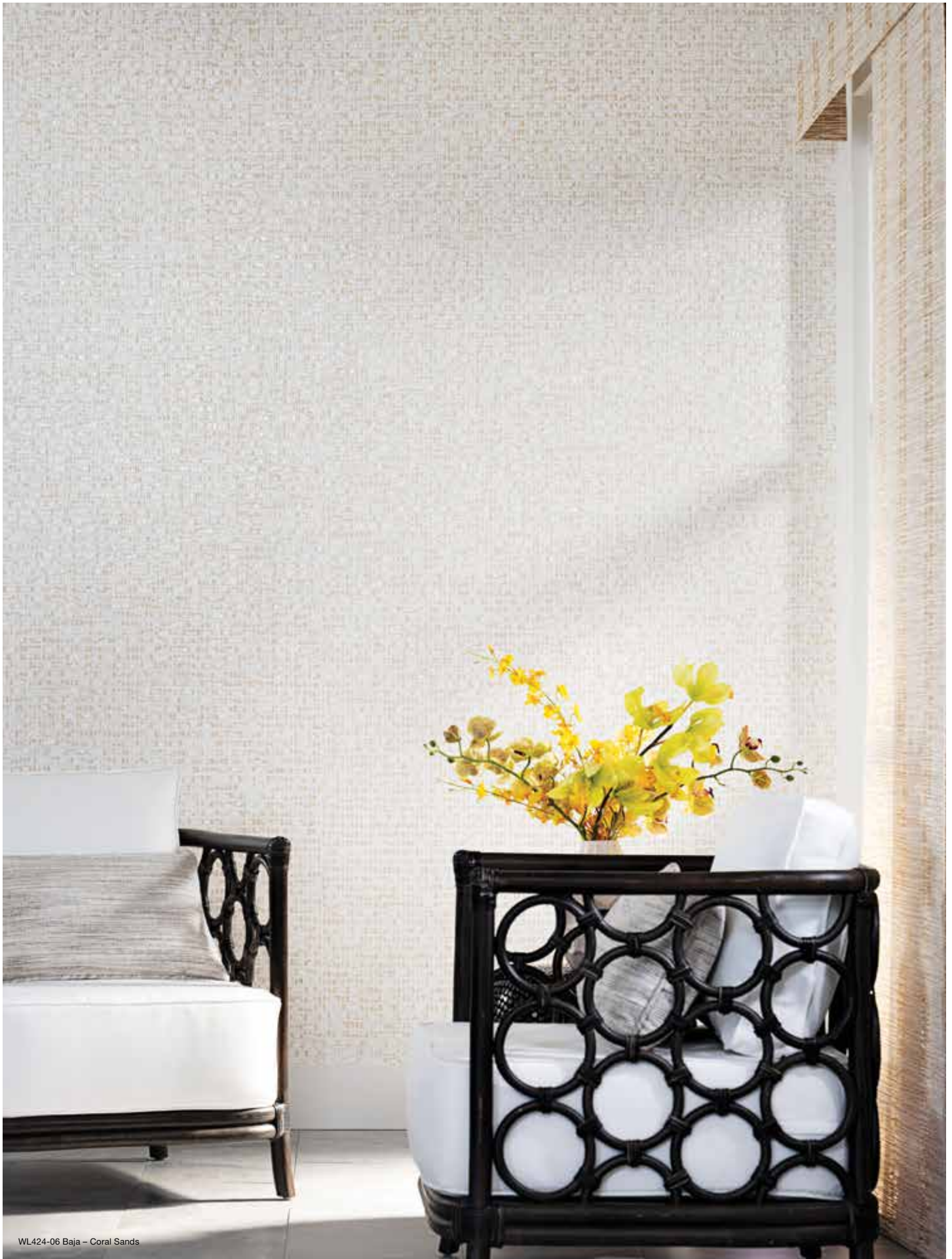
WL424-06 Coral Sands



WL424-03 White Sands



WL424-12 Desert Sands









SEABOARD

Inspired by that fleeting moment when the sea mist-covered boardwalk mirrors the sunset, Seaboard reflects this elegantly subtle shimmer in unique designs using fibers of abaca and hand-stripped water lillies.



WL414-03 Cape



WL414-12 Landing



WL414-36 Pier





RIVERFRONT

Resembling reflective waters of a river winding through a city, the Riverfront series is highlighted by golden metallic threads interwoven within soft white and silver abaca.



WL415-03 Sail



WL415-36 Mooring

HARBOR

Sailboat-dotted inlets and ocean sunbeams inspire this eye-catching design. Hearty bac bac fiber is hand-stripped, handwoven, backed with colored paper, then washed with white or metallic pigments. This artisanal process creates a dimensional wallcovering of extraordinary character.



WL420-21 Nantucket



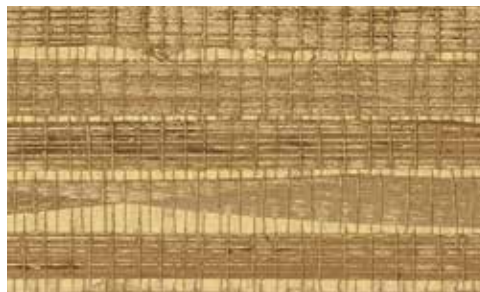
WL420-42 Rockport



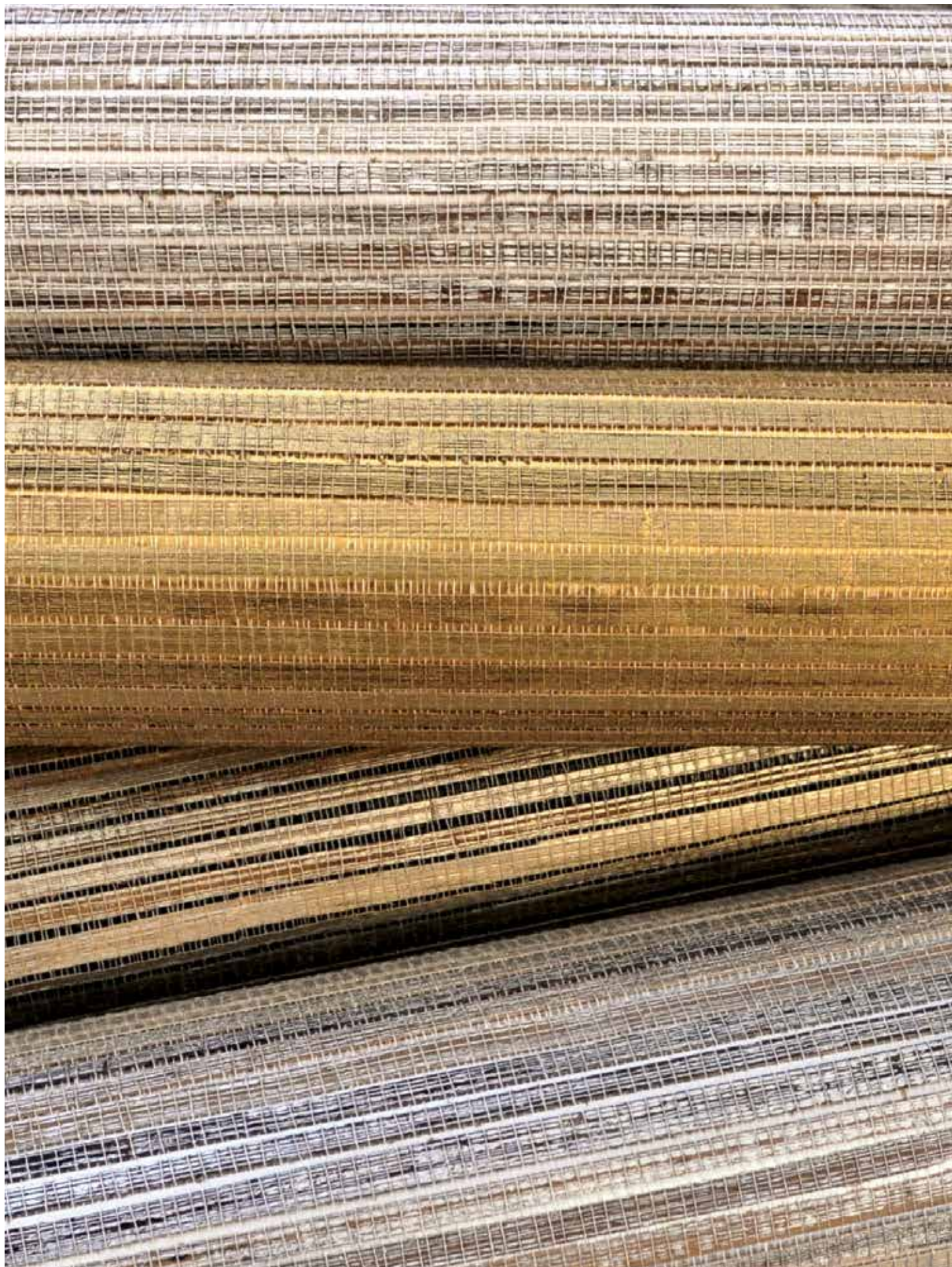
WL420-45 San Juan



Designer – Tiffany Home Design | Photo – Gregory Dean



WL420-51 Catalina





ISLAND COAST

Elemental marine hues wash over this classic handwoven raffia weave with clear lacquer finish for subtle sheen. A contemporary classic that invites the outdoors in.



WL418-06 Shell



WL418-33 Sea Mist



WL418-15 Pebble



WL418-42 Tortoise







WL417-15 Sea Foam



WL417-33 Sea Break



WL417-45 Beach



WL417-60 Haze

PENINSULA

Mineral browns and seafoam greens, swirl and eddy in energetic motion over handwoven raffia with exposed micro knots. A pearlized glaze adds subtle glimmer to the weave and lends instant radiance to a space.





WL405 Jordanelle



WL406 Rockport



WL407 Elkhorn



WL403-65 Wasatch Peak



WL402-72 Red Rock



WL408 Deer Valley



SUNDANCE

The Utah Canyonland is a revered place devoted to the exploration of art, nature and cultural heritage. Constructed from tightly-woven paper fiber, the Sundance color palette is a striking combination of variegated earth tones with gold metallic overlay.



CASCADIA

An energetic metropolis is nestled between the volcanic peaks of the Cascade Range and the shimmering waters of the Puget Sound. Fresh and dynamic, these weaves embody the beauty of the Pacific Northwest.



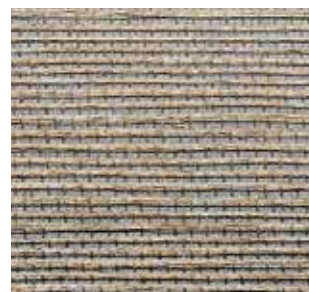
WL310 Rainier



WL311 Queen Anne



WL315 Pinehurst



WL313 Alki



WL312 Pike



WL314 Madrona



WL316-84 Sandpoint

Width: 36" (91.4cm) | Length: 8yds (7.3m)

Shown: WL312 Cascadia - Pike, Wallcovering

888.582.8780 | HARTMANNFORBES.COM | 199





TAHOE

Drawing inspiration from the golden tones that ignite the lip of Lake Tahoe's snow-lined shores, this series' blended weave of gold metallic threads into a woven paper backdrop encapsulates Tahoe's stunning late winter evenings.



WL410-06 Snowdrift



WL410-21 Sundown



WL410-12 Icecap



WL410-81 Starlight



BIG SKY

The spectacular color display of Montana's open ranges is translated into this vigorous textural weave of jute and linen. Exposed knots and striated sagebrush colors contribute to a strong linear design.



WL419-21 Badlands



WL419-33 Bighorn



WL364 Cypress



WL365 Sequoia



WL366 Ventana



SANTA LUCIA

Windswept seas and rugged shorelines are nearly palpable in the weaves of the Santa Lucia series. Each pattern gracefully infuses visions of cleansing mists, wild bluffs and coastal skies into any interior.

HIGH DESERT

The High Desert series combines the stark beauty of the back country with the tenderness of life that thrives there. Striated, textured and dramatic, each weave exudes the warmth and character that draws people to the desert.



WL358 Sonoran



WL353 Ridgecrest



WL357 Sedona



WL354 Sweetwater



WL355 Sage Creek



WL352 Mineral Springs



WL359 Mojave

NORTH ESTATE

The hand-hewn weaves of the North Estate series provides walls with a cultivated and distinct patina reminiscent of fertile, sun-dappled valleys draped with vine-ripened fruit.



WL321 Blanc



WL323 Barrique



WL325 Claret



WL322 Chateau



WL326 Domaine





WL409-15 Chaff

ACRE

High on a Montana plateau at the edge of a pond, sun-bleached grasses sway in the wind. Horses gather to sip the clear water. These designs draw upon the serenity of the breeze, grass and water.



WL409-12 Oat



WL409-21 Hay



HILL COUNTRY

The Hill Country series evokes the unending vistas of the open range. Each design proudly shares the texture, warmth and rich character of the prairie's natural grassland.



WL349 Muhly



WL348 Chapparal



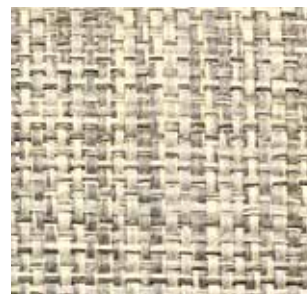
WL346 Wildseed



WL344 Ranchgrass



WL345 Verdure

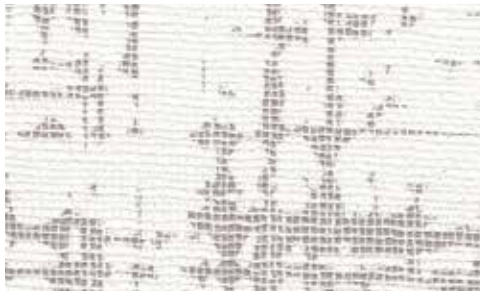


WL347 Greystem



UPTOWN

This refined wallcovering conveys the energy of urban construction. An abstract grid design is enlarged, rotary printed, then a thin layer of linen delicately hand applied to soften the effect. The result is a seamless backdrop that adds an element of the unexpected.



WL422-15 Boulevard



WL422-09 Walkway



WL422-60 Skyway



WL422-84 Rooftop



Design – Tiffany Home Design | Photo – Realty Photo NW



WL333 Telfair



WL334 Sorrel



WL335 Chippewa



WL336 Forsyth

COLONIAL

The Colonial series recalls the classic elegance of traditional Southern style.

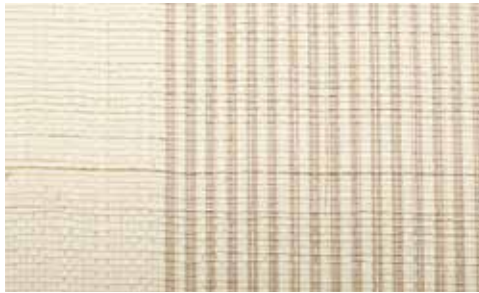
Soft, muted hues of nature combine with a delicate pattern to create a new level of refinement in wallcoverings.

Width: 36" (91.4cm) | Length: 8yds (7.3m)

Shown: WL333 Colonial – Telfair, Wallcovering
PE603-09 Serenity – Creative Sand, Old Style Roman

DISTRICT

The unmistakable history of our nation's capital is reflected in the District series' warm colors and clean lines, which honor the past while celebrating today's contemporary design ideals.



WL301 Capitol



WL304 Georgetown



WL302 Dupont



WL303 Trinity



WL305 Bethesda



Design – Tiffany Home Design | Photo – Elijah Hoffman

MONTEREY

The tidal beauty of Monterey Bay flows in this design of shifting sand and sea-smoothed pebbles. The application of digital printing on traditional grasscloth makes this a contemporary take on a classic wallcovering.



WL421-15 Tide Stone



WL421-45 Reef



WL421-57 Sea Glass



WL421-60 Dark Shell





CATHEDRAL

Resembling the glossy bark of rain-soaked aspens in the Cathedral region of the Colorado mountains, this innovative design is created with hand-sliced cork skillfully placed on metallic backing paper, then printed with a design inspired by winter woodlands. This meticulous process results in a lasting impression.



WL423-03 White Gold



WL423-09 Gilded



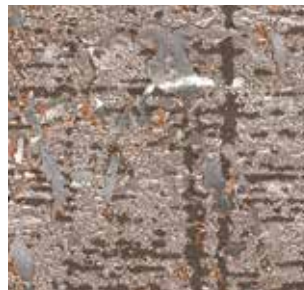
WL423-36 Silver



WL423-15 Pewter



WL423-39 Bronze



WL423-18 Copper

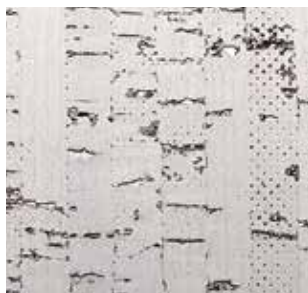


ALPINE

Hand-stripped cork reminiscent of snowcapped summits, rich pine forests and glacial meadows brings home the seldom-experienced richness of a soft-to-the-touch wilderness.



WL375 Bristlecone



WL374 Aspen



WL377 Larch



WL376 Pine



WL378 Spruce



WL381 Lincoln Park



WL382 Bucktown



WL383 Edgewater



Design – Tiffany Home Design | Photo – Elijah Hoffman

LAKE SHORE

The radiant finish of the Lake Shore series is reminiscent of skyscrapers rising up from Lake Michigan in downtown Chicago. Hand-peeled cork is backed with metallic paper and hand blocked with a metallic finish.



NORTHSANDS

The Northsands series features a neutral palette of vertical mica sand stripes against the subtle shimmer of a metallic backdrop. Northsands can be installed railroaded to create a horizontal stripe.



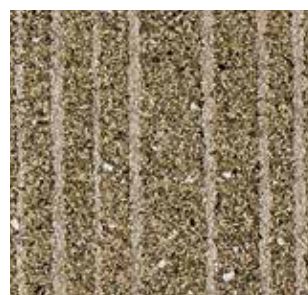
WL412-36 Sterling



WL412-03 Pearlescent



WL412-06 Opalescent



WL412-21 Gilt



COASTLINE

Reflecting the dramatic rise and fall of the ocean tide, the Coastline series presents an oversized, herringbone-inspired mica sand pattern complemented by a dramatic metallic backdrop.



WL413-03 Clouded



WL413-45 Golden



WL413-84 Eclipse





BY-THE-YARD TEXTILES

Our yardage programs are ideal for architects, designers, custom workrooms or automation specialists who want to use our textiles in their projects for a variety of uses. Refer to Weave Detail and Price List for available options.

MICHAEL SMITH COLLECTION

GRASSWEAVE [WTS]

GRASSWEAVE [TTS]

PG	NUMBER	NAME
----	--------	------

5	KW110	Asa, <i>p118</i>
5	KW112	Kumo, <i>p118</i>
5	KW114	Haru, <i>p118</i>
5	KW116	Ame, <i>p118</i>
5	KW118	Ishi, <i>p118</i>
5	KW92	Pacific Basin, <i>p119</i>
5	KW95	Lotus Blossom, <i>p119</i>
3	No. 13m	Morning Prairie, <i>p122</i>
3	No. 13n	Natural Prairie, <i>p122</i>
3	No. 13s	Shadow Prairie, <i>p122</i>
1	No. 25r	Bamboo Rustic w/Reed,
2	No. 31	Taki Caramel, <i>p123</i>
2	No. 31r	Taki Rustic, <i>p123</i>
1	No. 31s	Taki Shell, <i>p123</i>
4	No. 90	Kanto Basin, <i>p120</i>
4	No. 91d	Dusk Linen, <i>p116</i>
3	No. 91p	Palm Linen, <i>p116</i>
4	No. 91r	Russet Linen, <i>p116</i>
3	No. 91s	Summer Linen, <i>p116</i>
4	No. 91w	Winter Linen, <i>p116</i>
4	No. 92	Mu Basin, <i>p120</i>
4	No. 93	Yangtze Basin, <i>p120</i>
4	No. 95	Saru Basin, <i>p120</i>
4	No. 98	Fuji Basin, <i>p120</i>

PAPYRUSWEAVE [TTS]

PG	NUMBER	NAME
1	PW101c	Cattail, <i>p128</i>
1	PW101e	Emmer, <i>p128</i>
1	PW101s	Sumac, <i>p128</i>
1	PW101t	Thistle, <i>p128</i>
2	PW10b	Antique Silk, <i>p134</i>
2	PW10p	Porcelain Silk, <i>p134</i>
2	PW10t	Tyari Silk, <i>p134</i>
2	PW10w	Pearl Silk, <i>p134</i>
4	PW157-06	Ecru, <i>p131</i>
4	PW157-09	Buff, <i>p131</i>

4	PW157-36	Heathered, <i>p131</i>
4	PW157-45	Henna, <i>p131</i>
4	PW157-66	Bruine, <i>p131</i>
5	PW158-03	Blanched, <i>p132</i>
5	PW158-09	Fawn, <i>p132</i>
5	PW158-36	Dusty, <i>p132</i>
5	PW158-45	Bister, <i>p132</i>
5	PW158-66	Cocoa, <i>p132</i>
1	PW50	Snow Lantern, <i>p127</i>
1	PW52	Stepping Stone, <i>p127</i>
1	PW53	Koi Pond, <i>p127</i>
4	PW89a	Annapura, <i>p135</i>
4	PW89e	Everest, <i>p135</i>
4	PW89L	Lhotse, <i>p135</i>
4	PW89m	Makalu, <i>p135</i>
4	PW94b	Sahara, <i>p134</i>
4	PW94g	Ibis, <i>p134</i>
4	PW94w	Cotton, <i>p134</i>

COLOURWEAVE [TTS]

PG	NUMBER	NAME
4	CW09	Sand Dollar, <i>p140</i>
4	CW09d	Sand Dollar, <i>p139</i>
4	CW29	Quartz, <i>p140</i>
4	CW29d	Quartz, <i>p139</i>
4	CW36	Park Avenue, <i>p140</i>
4	CW36d	Park Avenue, <i>p139</i>
3	CW45	Bolivian Maple, <i>p140</i>
3	CW46	Peruvian Walnut, <i>p140</i>
3	CW47	Brazilian Teak, <i>p140</i>
3	CW48	Chilean Cherry, <i>p140</i>
3	CW49	Minkwood, <i>p142</i>
3	CW50	Brickwood, <i>p142</i>
3	CW51	Bark, <i>p142</i>
4	CW70	Frost, <i>p140</i>
4	CW70d	Frost, <i>p139</i>
4	CW71	Sand Dune, <i>p140</i>
4	CW71d	Sand Dune, <i>p139</i>
4	CW72	Stone, <i>p140</i>
4	CW72d	Stone, <i>p139</i>

SOFT NATURAL FABRIC

PG	NUMBER	NAME
3	EW32b	Biot, <i>p166</i>
3	EW32f	Frejus, <i>p166</i>
1	EW91g	Genoa, <i>p161</i>
1	EW91m	Merano, <i>p161</i>
1	EW91p	Pisa, <i>p161</i>
4	EW104-12	Limestone, <i>p151</i>
4	EW104-18	Sandstone, <i>p151</i>
4	EW104-32	Moonstone, <i>p151</i>
4	EW104-60	Graystone, <i>p151</i>
4	EW105-06	Buff, <i>p154</i>
4	EW105-60	Denim, <i>p154</i>
5	EW108-21	Bask, <i>p156</i>
5	EW108-60	Shade, <i>p156</i>
4	EW109-06	Cotton, <i>p155</i>
4	EW109-12	Burlap, <i>p155</i>
4	EW140L	LeBlon, <i>p163</i>
4	EW140r	Rocha, <i>p163</i>
3	EW141a	Andari, <i>p160</i>
3	EW141t	Tijura, <i>p160</i>
3	EW144b	Balem, <i>p162</i>
3	EW144n	Natal, <i>p162</i>
3	EW144o	Ounda, <i>p162</i>
3	EW144r	Recliffe, <i>p162</i>
4	EW145m	Marceio, <i>p167</i>
4	EW145s	Sao' Luis, <i>p167</i>
2	EW146a	Amapa, <i>p166</i>
2	EW146f	Fortaleza, <i>p166</i>
4	EW147	Lagoa, <i>p160</i>
4	EW148-12	Earthen, <i>p152</i>

4	EW148-39	Root, <i>p152</i>
4	EW148-51	Bloom, <i>p152</i>
4	EW148-57	Petal, <i>p152</i>
4	EW148-84	Peat, <i>p152</i>
4	EW149-03	Glint, <i>p149</i>
4	EW149-09	Glow, <i>p149</i>
4	EW149-12	Luminous, <i>p149</i>
4	EW149-30	Echo, <i>p149</i>
4	EW149-36	Illusion, <i>p149</i>
4	EW149-79	Phantom, <i>p149</i>
4	EW150-03	Salt, <i>p146</i>
4	EW150-06	Dune, <i>p146</i>
4	EW150-09	Sandwash, <i>p146</i>
4	EW150-12	Plateau, <i>p146</i>
4	EW150-57	Oasis, <i>p146</i>
4	EW150-72	Sundown, <i>p146</i>
5	EW201	Lumen, <i>p171</i>
5	EW202	Candela, <i>p171</i>
4	EW210	Delaine, <i>p165</i>
4	EW212	Tamis, <i>p165</i>
4	EW214	Sagathy, <i>p165</i>
4	EW233	Arropa, <i>p168</i>
4	EW234	Vela, <i>p168</i>
4	EW235	Pradlo, <i>p168</i>
5	EW256	Praca, <i>p159</i>
5	EW257	Angulo, <i>p159</i>
5	EW258	Moldar, <i>p159</i>
5	EW259	Contorno, <i>p159</i>
4	EW260	Etamine, <i>p164</i>
4	EW262	Linsey, <i>p164</i>
4	EW264	Raschel, <i>p164</i>
4	EW266	Crochet, <i>p164</i>
3	EW281	Bloemen, <i>p169</i>
3	EW283	Lillieline, <i>p169</i>
3	EW285	Blodau, <i>p169</i>

PERFORMANCE FABRIC

PG	NUMBER	NAME
3	G03	Snow, <i>p177</i>
3	G06	Natural, <i>p177</i>
3	G09	Wheat, <i>p177</i>
3	G15	Smoke, <i>p177</i>
1	P01	Pearl White, <i>p178</i>
2	P06	Chalk, <i>p179</i>
2	P07	Alabaster, <i>p179</i>
2	P62	White, <i>p176</i>
2	P63	Birch, <i>p176</i>
2	PFSH01	Soft White, <i>p174</i>
2	PFSH02	Linen, <i>p174</i>
2	PFSH03	Khaki, <i>p174</i>
2	PFSH06	Asher, <i>p174</i>
1	PFTR10	Muslin, <i>p174</i>
1	PFTR11	Gabardine, <i>p174</i>
1	PFTR12	Worsted, <i>p174</i>
1	Q01	Mushroom Sand, <i>p178</i>
2	Q09	Tan, <i>p176</i>
2	Q12	Pebblestone, <i>p179</i>
2	Q16	Tobacco, <i>p179</i>
1	Q17	Sand Dollar, <i>p178</i>
2	Q36	Light Grey, <i>p176</i>
2	Q57	Wheat, <i>p176</i>
2	Q58	Mushroom, <i>p176</i>
2	Q87	Black, <i>p176</i>
3	SW5015	Crimini, <i>p181</i>
3	SW5046	Morrell, <i>p181</i>
3	SW5060	Matsutake, <i>p181</i>
3	SW5089	Enoki, <i>p181</i>
3	SW5092	Porcini, <i>p181</i>
2	U03	White, <i>p175</i>
2	U06	Ivory, <i>p175</i>
2	U12	Taupe, <i>p175</i>
2	U18	Khaki, <i>p175</i>

2	U27	Shell, <i>p175</i>
2	U36	Dove Grey, <i>p175</i>
1	V01	Pale Grey, <i>p178</i>
1	V02	Ninja Grey, <i>p178</i>
2	V07	Pewter, <i>p179</i>
2	V10	Ebony, <i>p179</i>
2	V39	Graphite, <i>p176</i>

NATURAL WALLCOVERING

PG	NUMBER	NAME
NA	WL301	Capitol, <i>p211</i>
NA	WL302	Dupont, <i>p211</i>
NA	WL303	Trinity, <i>p211</i>
NA	WL304	Georgetown, <i>p211</i>
NA	WL305	Bethesda, <i>p211</i>
NA	WL310	Rainier, <i>p199</i>
NA	WL311	Queen Anne, <i>p199</i>
NA	WL312	Pike, <i>p199</i>
NA	WL313	Alki, <i>p199</i>
NA	WL314	Madrona, <i>p199</i>
NA	WL315	Pinehurst, <i>p199</i>
NA	WL316-84	Sandpoint, <i>p199</i>
NA	WL321	Blanc, <i>p205</i>
NA	WL322	Chateau, <i>p205</i>
NA	WL323	Barrique, <i>p205</i>
NA	WL325	Claret, <i>p205</i>
NA	WL326	Domaine, <i>p205</i>
NA	WL333	Telfair, <i>p210</i>
NA	WL334	Sorrel, <i>p210</i>
NA	WL335	Chippewa, <i>p210</i>
NA	WL336	Forsyth, <i>p210</i>
NA	WL344	Ranchgrass, <i>p207</i>
NA	WL345	Verdure, <i>p207</i>
NA	WL346	Wildseed, <i>p207</i>
NA	WL347	Graystem, <i>p207</i>
NA	WL348	Chapparal, <i>p207</i>
NA	WL349	Muhly, <i>p207</i>
NA	WL352	Mineral Springs, <i>p204</i>
NA	WL353	Ridgecrest, <i>p204</i>
NA	WL354	Sweetwater, <i>p204</i>
NA	WL355	Sage Creek, <i>p204</i>
NA	WL357	Sedona, <i>p204</i>
NA	WL358	Sonoran, <i>p204</i>
NA	WL359	Mojave, <i>p204</i>
NA	WL364	Cypress, <i>p203</i>
NA	WL365	Sequoia, <i>p203</i>
NA	WL366	Ventana, <i>p203</i>
NA	WL374	Aspen, <i>p216</i>
NA	WL375	Bristlecone, <i>p216</i>
NA	WL376	Pine, <i>p216</i>
NA	WL377	Larch, <i>p216</i>
NA	WL378	Spruce, <i>p216</i>
NA	WL381	Lincoln Park, <i>p217</i>
NA	WL382	Bucktown, <i>p217</i>
NA	WL383	Edgewater, <i>p217</i>
NA	WL402-72	Red Rock, <i>p198</i>
NA	WL403-65	Wasatch Peak, <i>p198</i>
NA	WL405	Jordanelle, <i>p198</i>
NA	WL406	Rockport, <i>p198</i>
NA	WL407	Elkhorn, <i>p198</i>
NA	WL408	Deer Valley, <i>p198</i>
NA	WL409-12	Oat, <i>p206</i>
NA	WL409-15	Chaff, <i>p206</i>
NA	WL409-21	Hay, <i>p206</i>
NA	WL410-06	Snowdrift, <i>p201</i>
NA	WL410-12	Icecap, <i>p201</i>
NA	WL410-21	Sundown, <i>p201</i>
NA	WL410-81	Starlight, <i>p201</i>
NA	WL412-03	Pearlescent, <i>p218</i>
NA	WL412-06	Opalescent, <i>p218</i>
NA	WL412-21	Gilt, <i>p218</i>
NA	WL412-36	Sterling, <i>p218</i>
NA	WL413-03	Clouded, <i>p219</i>
NA	WL413-45	Golden, <i>p219</i>
NA	WL413-84	Eclipse, <i>p219</i>
NA	WL414-03	Cape, <i>p188</i>
NA	WL414-12	Landing, <i>p188</i>
NA	WL414-36	Pier, <i>p188</i>
NA	WL415-03	Sail, <i>p191</i>
NA	WL415-36	Mooring, <i>p191</i>
NA	WL417-15	Sea Foam, <i>p197</i>
NA	WL417-33	Sea Break, <i>p197</i>
NA	WL417-45	Beach, <i>p197</i>
NA	WL417-60	Haze, <i>p197</i>
NA	WL418-06	Shell, <i>p194</i>
NA	WL418-15	Pebble, <i>p194</i>
NA	WL418-33	Sea Mist, <i>p194</i>
NA	WL418-42	Tortoise, <i>p194</i>
NA	WL419-21	Badlands, <i>p202</i>
NA	WL419-33	Bighorn, <i>p202</i>
NA	WL420-21	Nantucket, <i>p192</i>
NA	WL420-42	Rockport, <i>p192</i>
NA	WL420-45	San Juan, <i>p192</i>
NA	WL420-51	Catalina, <i>p192</i>
NA	WL421-15	Tide Stone, <i>p212</i>
NA	WL421-45	Reef, <i>p212</i>
NA	WL421-57	Sea Glass, <i>p212</i>
NA	WL421-60	Dark Shell, <i>p212</i>
NA	WL422-09	Walkway, <i>p209</i>
NA	WL422-15	Boulevard, <i>p209</i>
NA	WL422-60	Skyway, <i>p209</i>
NA	WL422-84	Rooftop, <i>p209</i>
NA	WL423-03	White Gold, <i>p215</i>
NA	WL423-09	Gilded, <i>p215</i>
NA	WL423-15	Pewter, <i>p215</i>
NA	WL423-18	Copper, <i>p215</i>
NA	WL423-36	Silver, <i>p215</i>
NA	WL423-39	Bronze, <i>p215</i>
NA	WL424-03	White Sands, <i>p184</i>
NA	WL424-06	Coral Sands, <i>p184</i>
NA	WL424-12	Desert Sands, <i>p184</i>

SHOWROOMS



A PERSONALIZED BOUTIQUE EXPERIENCE

For a complete showroom listing visit hartmannforbes.com/showrooms
or contact Customer Relations at 888.582.8780

PO Box 1149 | Tualatin, OR 97062 | hartmannforbes.com | t 503.692.9313 | 888.582.8780 | f 503.692.9315

©Copyright 2020 Hartmann&Forbes,® Inc. All rights reserved. All design information, samples, photographs, text, graphics, layout, weave and shade names and other materials included in this book are protected as the proprietary intellectual property of Hartmann&Forbes, Inc. Reproduction, adaptation or duplication, in whole or in part, is prohibited except by express written permission of Hartmann&Forbes, Inc.

BOSTON
NEW YORK
WASHINGTON DC
HOLLYWOOD, FL
ATLANTA
DETROIT
CLEVELAND
CHICAGO
ARLINGTON HEIGHTS
MINNEAPOLIS
DENVER
ST. LOUIS
KANSAS CITY
DALLAS
HOUSTON
SCOTTSDALE
SEATTLE
SAN FRANCISCO
LOS ANGELES
LAGUNA NIGUEL
CALGARY, AB
VANCOUVER, BC
TORONTO, ON

HARTMANNFORBES.COM

