

# HARTMANN & FORBES®

## FEATURED IN



Publication: Contract  
Date: September 2010  
Article: Resources

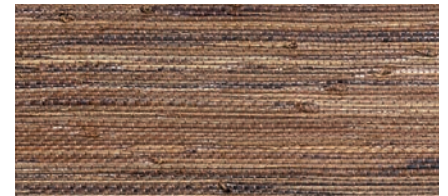
To order no-charge memos, contact  
Customer Relations at 888.582.8780  
or your local showroom representative.



### Hartmann & Forbes

Applying traditional hand-loom techniques, the Liniedge Collection of window treatments is made-to-size from natural sustainable fibers, including arrowroot, river reed, ramie, and palm. All weaves are hand-finished to create a continuous warp-edge and are available in 37 designs.  
[www.hfshades.com](http://www.hfshades.com) Reader Service No. 210

#### WOVEN-TO-SIZE GRASSWEAVE



LE1104 Tissage – Tussah  
*Old Style Roman Shade*

#### NATURAL FABRIC



EW41L Lantau  
*Drapery*