

HARTMANN & FORBES®

NATURAL WALLCOVERING





NATURAL WALLCOVERING

Sustainably cultivated and rapidly renewable materials are handwoven, paper backed and trimmed for the wall. The range of neutral colors, natural textures and timeless designs complement any residential, commercial or hospitality space and reflects the personality of the region that inspired its creation.

SEABOARD

Seaboard offers impressions of the seaside's fleeting moments. Sharing reflective qualities of mist and light, these distinctive designs offer subtle, metallic finishes, luminous threads and a unique use of natural fibers.



WL414-03 Cape | shown **NEW**



WL414-36 Pier



WL414-12 Landing **NEW**

Width: 43" (109cm) | Length: By-the-Yard
Design Considerations: Side Match

Color and scale of images may not be accurate. To request samples, please contact your local representative showroom.
Refer to 2016 Specification Guide & Price List for full weave detail.





PENINSULA ^{NEW}

Mineral browns and seafoam greens, swirl and eddy in energetic motion over handwoven raffia with exposed micro knots. A pearlized glaze adds subtle glimmer to the weave and lends instant radiance to a space.



WL417-45 Beach



WL417-15 Sea Foam



WL417-33 Sea Break



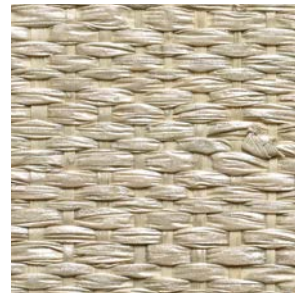
WL417-60 Haze | shown

Width: 36" (91cm) | Length: 8yds (7.3m)

Color and scale of images may not be accurate. To request samples, please contact your local representative showroom. Refer to 2016 Specification Guide & Price List for full weave detail.

ISLAND COAST ^{NEW}

Elemental marine hues wash over this classic handwoven raffia weave with clear lacquer finish for subtle sheen. A contemporary classic that invites the outdoors in.



WL418-06 Shell



WL418-15 Pebble



WL418-42 Tortoise



WL418-33 Sea Mist | shown

Width: 36" (91cm) | Length: 8yds (7.3m)

Color and scale of images may not be accurate. To request samples, please contact your local representative showroom. Refer to 2016 Specification Guide & Price List for full weave detail.



WALL



BIG SKY ^{NEW}

The spectacular color display of Montana's open ranges is translated into this vigorous textural weave of jute and linen. Exposed knots and striated sagebrush colors contribute to a strong linear design.



WL419-21 Badlands | shown



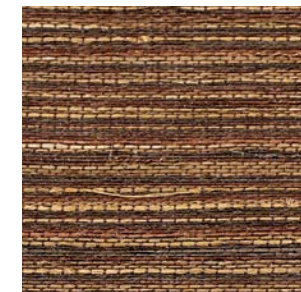
WL419-33 Bighorn

SANTA LUCIA

Windswept seas and rugged shorelines are nearly palpable in the weaves of the Santa Lucia series. Each pattern gracefully infuses visions of cleansing mists, wild bluffs and coastal skies into any design.



WL364 Cypress



WL365 Sequoia



WL366 Ventana

Width: 36" (91cm) | Length: 8yds (7.3m)

Color and scale of images may not be accurate. To request samples, please contact your local representative showroom. Refer to 2016 Specification Guide & Price List for full weave detail.

ACRE

High on a Montana plateau at the edge of a pond, sun-bleached grasses sway in the wind. Horses gather to sip the clear water. These designs draw upon the serenity of breeze, grass and water.



WL409-15 Chaff



WL409-12 Oat



WL409-21 Hay | shown

Width: 36" (91cm) | Length: 8yds (7.3m)

Color and scale of images may not be accurate. To request samples, please contact your local representative showroom. Refer to 2016 Specification Guide & Price List for full weave detail.





TAHOE

Drawing inspiration from the golden tones that ignite the lip of Lake Tahoe's snow-lined shores, this series' blended weave of gold metallic threads into a woven paper backdrop encapsulates Tahoe's stunning late-winter evenings.



WL410-06 Snowdrift



WL410-12 Icecap



WL410-21 Sundown



WL410-81 Starlight | shown

Width: 36" (91cm) | Length: 11yds (10m)

Color and scale of images may not be accurate. To request samples, please contact your local representative showroom. Refer to 2016 Specification Guide & Price List for full weave detail.

RIVERFRONT

Resembling reflective waters of a river winding through a city, the Riverfront series is highlighted by golden metallic threads interwoven within soft white and silver abaca.



WL415-03 Sail



WL415-36 Mooring

Width: 43" (109cm) | Length: By-the-Yard

Color and scale of images may not be accurate. To request samples, please contact your local representative showroom. Refer to 2016 Specification Guide & Price List for full weave detail.



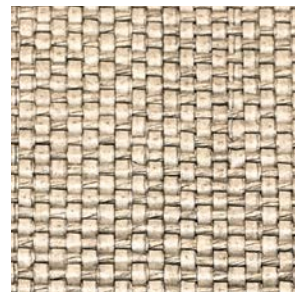


HILL COUNTRY

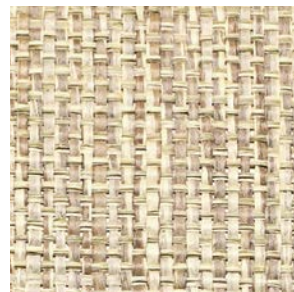
The Hill Country series evokes the unending vistas of the open range. Each design proudly shares the texture, warmth and rich character of the prairie's natural grassland.



WL349 Muhly



WL348 Chapparral



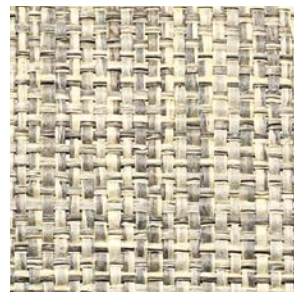
WL346 Wildseed



WL344 Ranchgrass



WL345 Verdure



WL347 Graystem

Width: 36" (91cm) | Length: 8yds (7.3m)

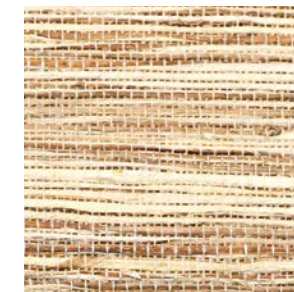
Color and scale of images may not be accurate. To request samples, please contact your local representative showroom. Refer to 2016 Specification Guide & Price List for full weave detail.

NORTH ESTATE

The hand-hewn weaves of the North Estate series provides walls with a cultivated and distinct patina reminiscent of fertile, sun-dappled valleys draped with vine-ripened fruit.



WL321 Blanc



WL322 Chateau



WL323 Barrique



WL325 Claret



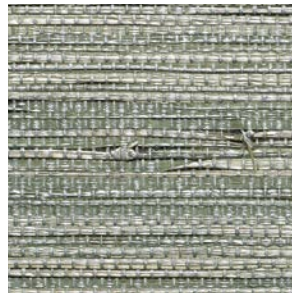
WL326 Domaine

Width: 36" (91cm) | Length: 8yds (7.3m)

Color and scale of images may not be accurate. To request samples, please contact your local representative showroom. Refer to 2016 Specification Guide & Price List for full weave detail.

SUNDANCE

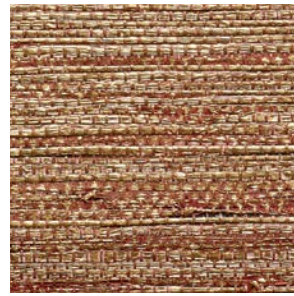
The Utah Canyonland is a revered place devoted to the exploration of art, nature and cultural heritage. Constructed from tightly woven paper fiber, the color palette is a striking combination of variegated earth tones with gold metallic overlay.



WL403-65 Wasatch Peak **NEW**



WL407 Elkhorn | shown



WL402-72 Red Rock **NEW**



WL406 Rockport



WL405 Jordanelle



WL408 Deer Valley

Width: 36" (91cm) | Length: 8yds (7.3m)

Color and scale of images may not be accurate. To request samples, please contact your local representative showroom. Refer to 2016 Specification Guide & Price List for full weave detail.



WALL



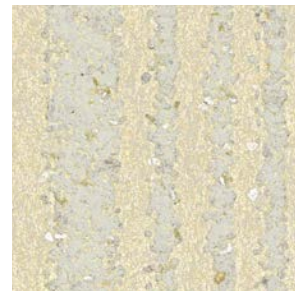
WALL

NORTHSANDS

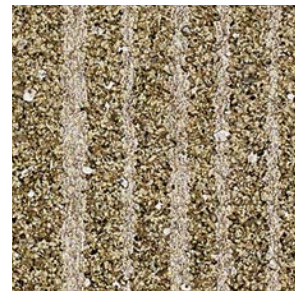
The Northsands series features a neutral palette of vertical mica sand stripes against the subtle shimmer of a metallic backdrop. Northsands can be installed railroaded to create a horizontal stripe.



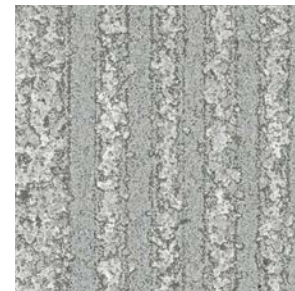
WL412-03 Pearlescent



WL412-06 Opalescent



WL412-21 Gilt



WL412-36 Sterling

Width: 36" (91cm) | Length: 11yds (10m)

Color and scale of images may not be accurate. To request samples, please contact your local representative showroom. Refer to 2016 Specification Guide & Price List for full weave detail.

COASTLINE

Reflecting the dramatic rise and fall of a spring tide, the Coastline series presents an oversized, herringbone-inspired mica sand pattern complemented by a dramatic metallic backdrop.



WL413-03 Clouded



WL413-45 Golden



WL413-84 Eclipse

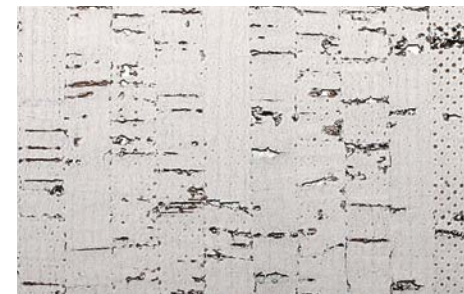
Width: 36" (91cm) | Length: 11yds (10m)

Color and scale of images may not be accurate. To request samples, please contact your local representative showroom. Refer to 2016 Specification Guide & Price List for full weave detail.



ALPINE

Hand-stripped cork reminiscent of snowcapped summits, rich pine forests and glacial meadows brings home the seldom-experienced richness of a soft-to-the-touch wilderness.



WL374 Aspen



WL375 Bristlecone



WL376 Pine | shown



WL377 Larch



WL378 Spruce

Width: 36" (91cm) | Length: 8yds (7.3m)

Color and scale of images may not be accurate. To request samples, please contact your local representative showroom. Refer to 2016 Specification Guide & Price List for full weave detail.

HIGH DESERT

The High Desert series combines the stark beauty of the back country with the tenderness of life that thrives there. Striated, textured and dramatic, each weave exudes the warmth and character that draws people to the desert.



WL358 Sonoran



WL351 Palm Dunes



WL353 Ridgecrest



WL357 Sedona



WL355 Sage Creek



WL356 Saddle Pass



WL354 Sweetwater



WL359 Mojave | shown



WL352 Mineral Springs

Width: 36" (91cm) | Length: 8yds (7.3m)

Color and scale of images may not be accurate. To request samples, please contact your local representative showroom. Refer to 2016 Specification Guide & Price List for full weave detail.





LAKE SHORE

The radiant finish of the Lake Shore series is reminiscent of skyscrapers rising up from Lake Michigan in downtown Chicago. Hand peeled cork is backed with metallic paper backing and hand blocked with a metallic finish.



WL381 Lincoln Park



WL382 Bucktown



WL383 Edgewater

Width: 36" (91cm) | Length: 8yds (7.3m)

Color and scale of images may not be accurate. To request samples, please contact your local representative showroom. Refer to 2016 Specification Guide & Price List for full weave detail.

AVENUE

Intricate yet simple, each pattern is woven of sustainable fibers and backed before being stripped and double woven. The resulting woven wall appearance offers a distinctive and modern aesthetic that draws interest and allure to a room's design.



WL390 Lexington



WL391 Fifth



WL392 Madison

Width: 36" (91cm) | Length: 8yds (7.3m)

Color and scale of images may not be accurate. To request samples, please contact your local representative showroom. Refer to 2016 Specification Guide & Price List for full weave detail.

CASCADIA

An energetic metropolis is nestled between the volcanic peaks of the Cascade Range and the shimmering waters of the Puget Sound. Fresh and dynamic, these weaves embody the beauty of the Pacific Northwest.



WL310 Rainier



WL311 Queen Anne



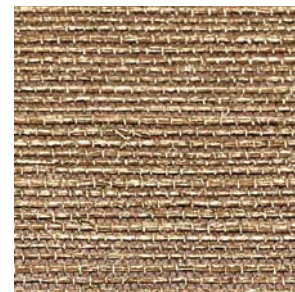
WL315 Pinehurst



WL313 Alki



WL312 Pike | shown



WL314 Madrona



WL316-84 Sandpoint **NEW**

Width: 36" (91cm) | Length: 8yds (7.3m)

Color and scale of images may not be accurate. To request samples, please contact your local representative showroom. Refer to 2016 Specification Guide & Price List for full weave detail.





WALL

COLONIAL

The Colonial series recalls the classic elegance of traditional Southern style. Soft, muted hues of nature combine with a delicate pattern to create a new level of refinement in wallcoverings.



WL333 Telfair



WL334 Sorrel



WL335 Chippewa | shown



WL336 Forsyth

Width: 36" (91cm) | Length: 8yds (7.3m)

Color and scale of images may not be accurate. To request samples, please contact your local representative showroom. Refer to 2016 Specification Guide & Price List for full weave detail.

DISTRICT

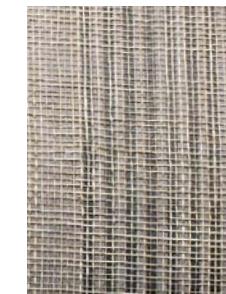
The unmistakable history of our nation's capital is reflected in the District series' warm colors and clean lines, which honor the past while celebrating today's contemporary design ideals.



WL301 Capitol



WL302 Dupont



WL304 Georgetown



WL305 Bethesda



WL303 Trinity | shown

Width: 36" (91cm) | Length: 8yds (7.3m)

Color and scale of images may not be accurate. To request samples, please contact your local representative showroom. Refer to 2016 Specification Guide & Price List for full weave detail.

