

HARTMANN & FORBES

PERFORMANCE FABRIC





PERFORMANCE FABRIC

A collection of designs from man-made fibers woven to achieve peak performance characteristics including heat and glare reduction, UV filtration and privacy. Fabrics are durable, meet or exceed commercial fire standards and are virtually maintenance-free.

COLLECTIONS

SOLARSCREEN, PRIVACY FABRIC

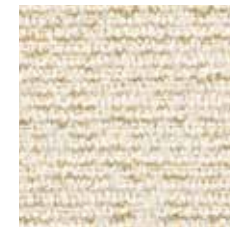


5000

Series 5000 jacquard fabrics combine rich, textured yarns with traditional patterns in naturals and rich earth tones. Woven from vinyl coated polyester and uncoated polyester yarns, these fabrics are as durable as they are beautiful.



SW5060 Matsutake
Openness: 10%



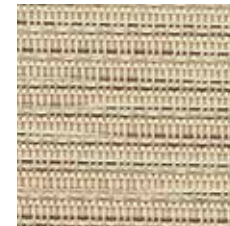
SW5089 Enoki **NEW**
Openness: 3%



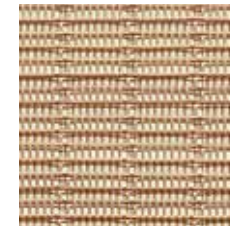
SW5016 Oyster
Openness: 10%



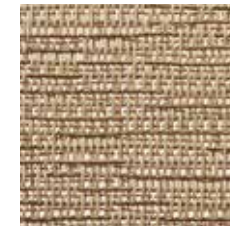
SW5015 Crimini
Openness: 10%



SW5046 Morrell
Openness: 7%



SW5049 Shitaki
Openness: 7%



SW5050 Portobello
Openness: 5%



SW5051 Truffle | shown
Openness: 5%



SW5092 Porcini **NEW**
Openness: 5%



SW5047 Chanterelle
Openness: 7%



SW5090 Maitake **NEW**
Openness: 10%

Price Group: 3 | Max Seamless Width: 98"
Available Styles: Rollershade, Top Treatment

Color and scale of images may not be accurate. To request samples, please contact your local representative showroom.
Refer to 2016 Specification Guide & Price List for full weave detail.



7000

BLACKOUT | PG2 | Max. Seamless Width: 118" | Rollershade, Top Treatment

Series 7000 is uniquely designed to provide total light blockage when complete room darkening is needed. With a range of decorative colors, the look and feel of rich cloth and a PVC-free composition.

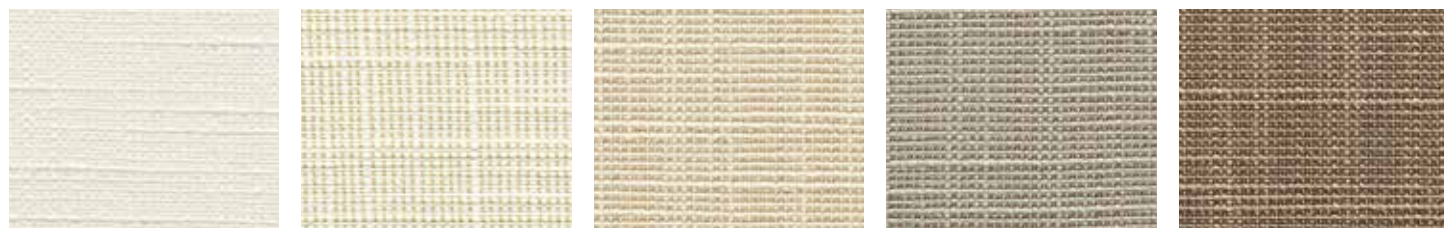


P62 White P63 Birch Q57 Wheat V39 Graphite

NEW 9000

BLACKOUT | PG3 | Max. Seamless Width: 110" | Rollershade, Top Treatment

Series 9000 features a modern textured design that offers total light blockage when complete room darkening is needed. Inherently green, because it blocks heat loss and reduces UV transmission.



G03 Snow G06 Natural G09 Wheat G15 Smoke G42 Earth

2000

OPENNESS 5% | PG2 | Max. Seamless Width: 96" | Rollershade, Top Treatment

Series 2000 performance fabrics are vinyl coated fiberglass basketweaves designed expressly for those applications that require a more opaque and nondirectional fabric.

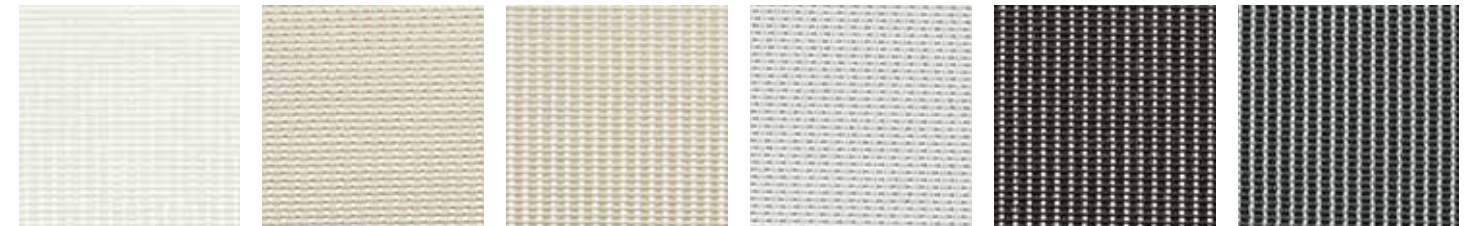


P02 White P04 White/Bone Q05 Bone V04 Platinum Q10 Bronze V21 Charcoal

3000

OPENNESS 14% | PG1 | Max. Seamless Width: 96" | Rollershade, Top Treatment

Combining vinyl coated fiberglass and polyester yarns, Series 3000 is woven into a unique rib weave for a distinct look and color palette. The 14% openness lets in more natural light while providing excellent outward visibility.

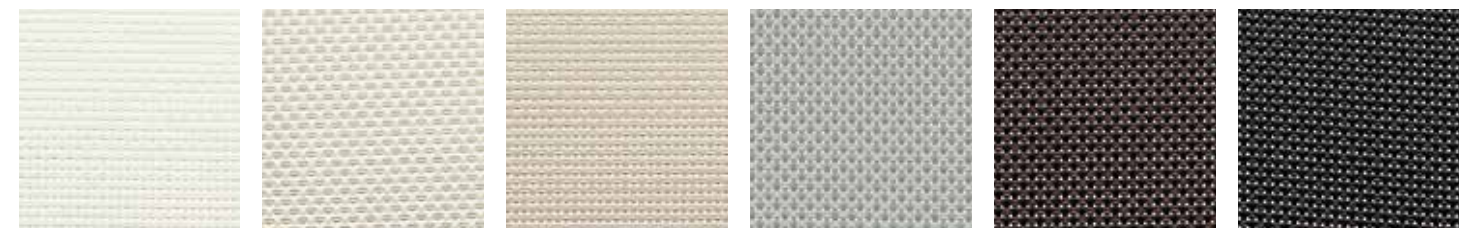


P01 Pearl White Q01 Mushroom Sand Q17 Sand Dollar V01 Pale Grey Q04 Chocolate V02 Ninja Grey

4000

OPENNESS 5% | PG2 | Max. Seamless Width: 98" | Rollershade, Top Treatment

Series 4000 performance fabrics combine the durability of vinyl coated polyester with the latest in green PVC technology.



P06 Chalk P07 Alabaster Q12 Pebblestone V07 Pewter Q16 Tobacco V10 Ebony

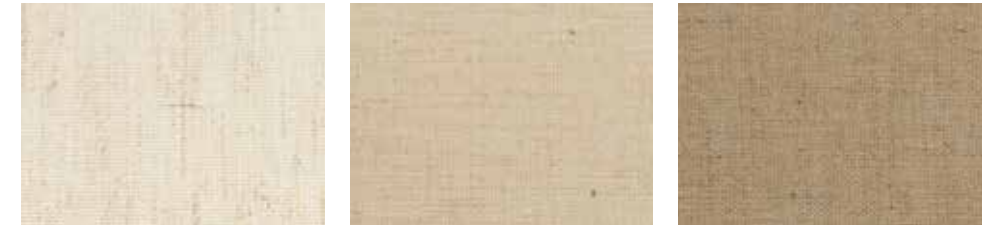


TRANSLUCENT PRIVACY FABRIC

Translucent privacy fabrics allow the warmth of the sun's glow with complete privacy in a soft fabric.



PFTR01 Soft White PG1 Max Seamless Width: 79" shown
 PFTR02 Linen PG1 Max Seamless Width: 79"
 PFTR03 Khaki PG1 Max Seamless Width: 79"
 PFTR06 Asher PG1 Max Seamless Width: 78"



PFTR10 Muslin PG1 Max Seamless Width: 78"
 PFTR11 Gabardine PG1 Max Seamless Width: 78"
 PFTR12 Worsted PG1 Max Seamless Width: 78"

NEW SHEER PRIVACY FABRIC

The Sheer series linen content maximizes the natural with ease of handling and care. The linen speckled slub softly filters light, providing an earthy natural look.



PFSH01 Soft White
 PFSH02 Linen
 PFSH03 Khaki
 PFSH06 Asher

Price Group: 2 | Max Seamless Width: 114"
 Available Styles: Rollershade, Top Treatment

Color and scale of images may not be accurate. To request samples, please contact your local representative showroom. Refer to 2016 Specification Guide & Price List for full weave detail.

BLACKOUT PRIVACY FABRIC

Blackout privacy fabrics offer complete blackout in a soft hand like fabric.



PFBO01 Soft White PG2 Max Seamless Width: 79"
 PFBO02 Linen PG2 Max Seamless Width: 79"
 PFBO03 Khaki PG2 Max Seamless Width: 79"
 PFBO06 Asher PG2 Max Seamless Width: 110"

Price Group (PG): 1, 2 | Max Seamless Width: 78" 79" 110"
 Available Styles: Rollershade, Top Treatment

Color and scale of images may not be accurate. To request samples, please contact your local representative showroom. Refer to 2016 Specification Guide & Price List for full weave detail.

HARTMANN&FORBES exists to inspire and delight Interior Designers and their clients by handcrafting natural home furnishings of distinction. We do this with innovative designs, uncompromising quality and exceptional delivery and service.

Our award-winning windowcoverings, wallcoverings and textiles are made of renewable natural materials that are sustainably cultivated and harvested. Each is custom finished to Interior Designers' precise specifications in our Oregon finishing facility.

HARTMANN&FORBES' products are distributed exclusively to-the-trade through a network of U.S. and International showrooms.

HARTMANN&FORBES®

PO Box 1149 | Tualatin, OR 97062 | hartmannforbes.com
t 503.692.9313 | 888.582.8780 | f 503.692.9315

©2017 HARTMANN&FORBES, INC