

# HARTMANN & FORBES®

SPRING/SUMMER 2017

NEW ARRIVALS

NATURAL LINEN FABRIC  
NATURAL WALLCOVERINGS

WINTER REFLECTIONS

SHOWHOUSES

NEW WEBSITE



The  
art  
challenges  
the  
technology  
and  
the  
technology  
inspires  
the  
art



-JOHN LASSETER

Technology is woven into the fabric of daily life as never before. Reflecting upon its importance, and how we as a design community can leverage its power, just might shape and form our collective destiny.

As a company that exclusively makes handcrafted, custom products of natural fibers, we are obviously curious about digital opportunities and how they might impact our artisanal approach.

Our curiosity challenged us to use new technologies for our Spring Collection. Natural flax fibers combined with state-of-the-art European looms offer a nuanced collection of Masters of Linen™ textiles, while the latest printing innovations visually mimic nature in two of our new wallcovering series.

In addition, our reflection also involved redesigning our brand's website. Providing added value to our client's busy schedules, the new site makes it easier than ever to specify our latest products and order samples at your convenience.

We will always stay true to our mission to inspire interior designers and help them create textural sanctuary environments, but playing along the digital fringe is an exciting challenge along our journey.

We hope you find this exploration as exciting as we do.

Michael Jones,  
Founder

A stylized, handwritten signature in black ink, appearing to read 'MJ'.







new

## FIBERS AND INSPIRED TECHNIQUES

### NATURAL FABRICS

Capturing the rhythmic sway of flax fields at harvest, our new natural fabrics are crafted in Belgium from pure European linen. Masters of Linen certified and available in double widths, this new design beautifully coordinates with collections past and present.

### NATURAL WALLCOVERINGS

Utilizing new techniques, fibers are reimagined culminating in three unique wallcovering series. Linen is hand applied to a rotary printed urban grid design. Marine ripples are digitally printed over textured grasscloth. Sustainable bac bac fibers are handstripped and handwoven creating a dimensional motif. Each distinct series beautifully frames any room.

These new designs are in stock and ready to ship. Visit your local showroom for no-charge memos or request online at [hartmannforbes.com](http://hartmannforbes.com).





FIELDS

nuanced beauty achieved through texture

A perfect expression of harmony in design. This linen beautifully blends two distinct textures into one evocative pattern. Gentle earth tones and visual texture from vertical warp fibers evoke images of undulating flax fields at harvest.



EW148-12 Earthen



EW148-51 Bloom



EW148-39 Root



EW148-57 Petal



EW148-84 Peat



FLAT STYLE ROMAN SHADE  
EW148-51 Bloom | TR02 Linen  
Natural Fabric | Translucent Liner





NATURAL WALLCOVERING  
WL422-09 Walkway  
*Specialty*

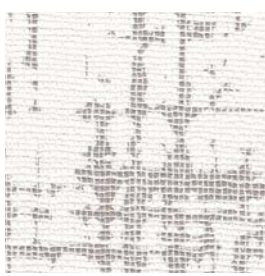
NATURAL WOVEN DRAPERY  
LE1012 Farandine  
*Woven-to-Size Grassweave*



## UPTOWN

a sophisticated pairing of paper and linen

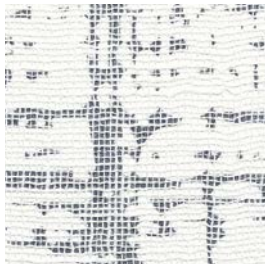
This refined wallcovering conveys the energy of urban construction. An abstract grid design is enlarged, rotary printed, then a thin layer of linen delicately hand-applied to soften the effect. The result is a seamless backdrop that adds an element of the unexpected.



WL422-15 Boulevard



WL422-09 Walkway



WL422-60 Skyway



WL422-84 Rooftop





NATURAL WALLCOVERING	PILLOWS	
WL421-57 Sea Glass	EW257 Angulo	LE1660 Thunder
Grasscloth	Natural Fabric	Woven-to-Size Grassweave

MONTEREY

grasscloth reimagined

The tidal beauty of Monterey Bay flows in this design of shifting sand and sea-smoothed pebbles. The application of digital printing on traditional grasscloth makes this a contemporary take on a classic wallcovering.



WL421-57 Sea Glass



WL421-60 Dark Shell



WL421-15 Tide Stone



WL421-45 Reef





H A R B O R

natural fiber with extraordinary character

Sailboat-dotted inlets and ocean sunbeams inspire this eye-catching design. Hearty bac bac fiber is handstripped, handwoven, backed with colored paper, then washed with white or metallic pigments. This artisanal process creates a dimensional wallcovering of extraordinary character.



WL420-51 Catalina



WL420-45 San Juan



WL420-21 Nantucket



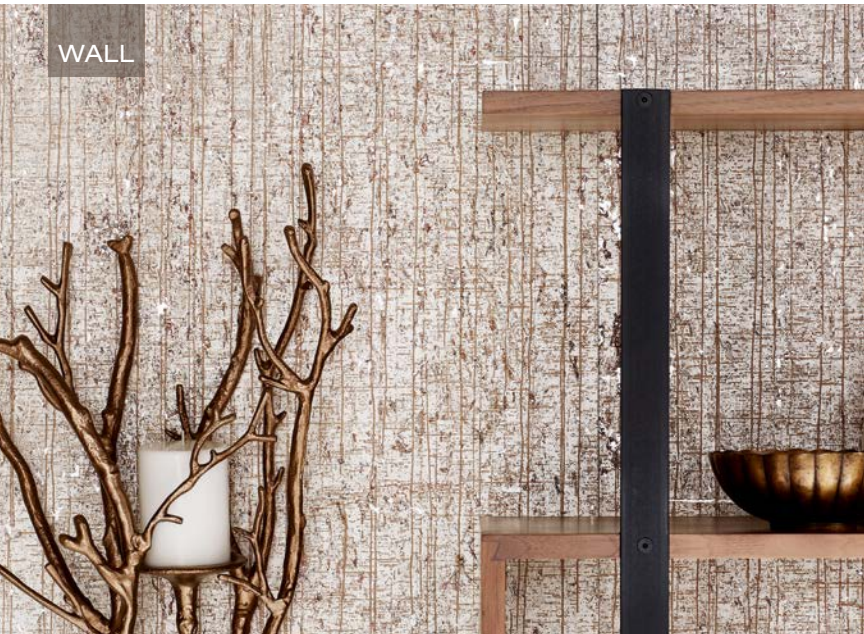
WL420-42 Rockport



NATURAL WALLCOVERING  
WL420-51 Catalina  
*Specialty*  
  
PILLOW  
EW257 Angulo  
*Natural Fabric*



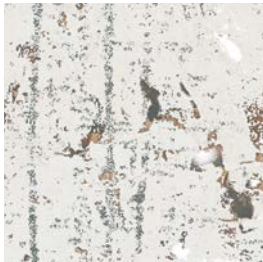
# WINTER REFLECTIONS



## CATHEDRAL

a lasting impression

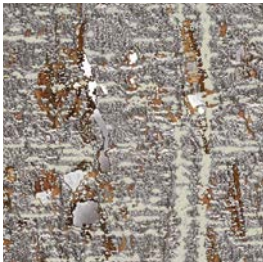
Resembling the glossy bark of rain-soaked Aspens in the Cathedral region of the Colorado mountains, this innovative wallcovering is created with hand-sliced cork skillfully placed on metallic backed paper, then printed with a design inspired by winter woodlands.



WL423-03 White Gold



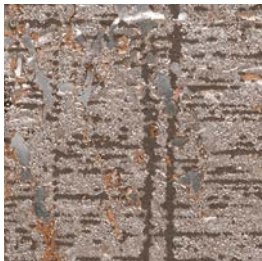
WL423-09 Gilded shown



WL423-36 Silver



WL423-15 Pewter



WL423-18 Copper

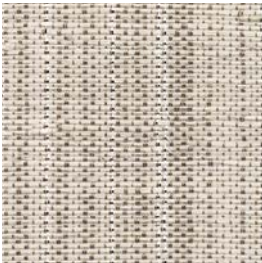


WL423-39 Bronze

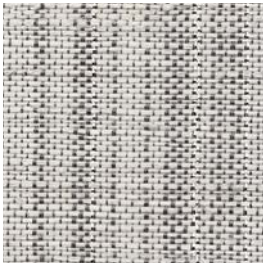
## RAINFALL

mixed metal accents

Shimmering raindrops from dawn to dusk, sunrise to sunset was the inspiration for Rainfall. Randomly lulled through the loom to create a pleasant variance, colored and metallic warp threads dance with white ramie weft fibers in harmonious, handwoven choreography.



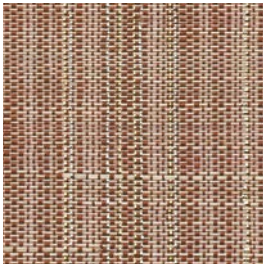
LE2012 Dawn



LE2039 Dusk



LE2021 Sunrise shown



LE2024 Sunset





# SHOWHOUSE GALLERY

## STREET OF DREAMS west linn, oregon



NATURAL WALLCOVERING  
WL422-60 Uptown – Skyway  
*Specialty*



Designer Brittany Tiffany  
Photographer Stephen Tarnesie  
tiffanyhomedesign.com



## SAN FRANCISCO DECORATOR SHOWCASE san francisco, california



NATURAL WOVEN SHADE  
OLD STYLE  
LE1423 Glisten – Nautilus  
*Woven-to-Size Grassweave*



Designer Tineke Triggs  
Photographer Aubrie Pick  
adlsf.com



NATURAL WOVEN SHADE  
OLD STYLE  
LE1239 Tissage – Dapple  
*Woven-to-Size Grassweave*



Designer Gideon Mendelson  
Photographer Eric Plasecki  
mendelsongroupinc.com



## DC DESIGN HOUSE washington, D.C.



NATURAL WOVEN SHADE  
OLD STYLE  
LE1303 Glimmer – Tamin  
*Woven-to-Size Grassweave*



Designer Camille Saum  
Photographer Robert Radifera  
camillesaum.com



For showhouse project support, please contact a Hartmann&Forbes  
Regional Manager at [hfsales@hartmannforbes.com](mailto:hfsales@hartmannforbes.com)



introducing the new  
HARTMANNFORBES.COM



RESPONSIVE  
INSPIRATIONAL  
EASY TO NAVIGATE  
SEARCHABLE



REGISTRATION  
[hartmannforbes.com/user/register](http://hartmannforbes.com/user/register)

Register for a Hartmann&Forbes professional trade account, then login for full access to all things Hartmann&Forbes.

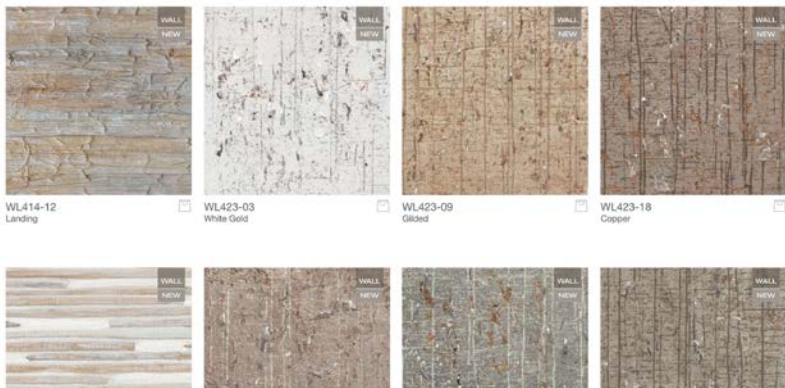


SAMPLE LIBRARY  
</resources/samples/windowcoverings>  
</resources/samples/wallcoverings>  
</sample-kits>

Peruse weaves by window or wallcoverings, then view weave detail and request memos 24/7. Memos ship same day if order is received before 12pm PST.

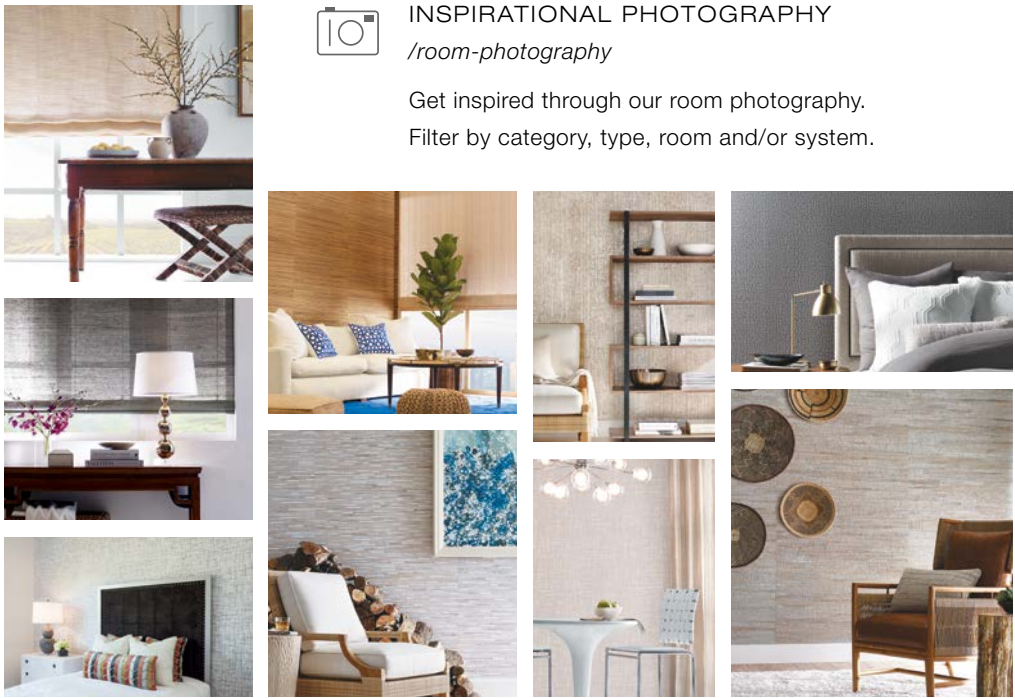
SEARCH FILTER  
Filter window and wallcovering by collection, style, color, texture, privacy, content, and even price which allows you to select the right weave based on your project needs.

DESIGNER KITS  
Login Required  
Request a new arrival update kit or order a Designer Sample Kit.



INSPIRATIONAL PHOTOGRAPHY  
</room-photography>

Get inspired through our room photography. Filter by category, type, room and/or system.



CUSTOMER SERVICE SUPPORT HUB  
</support-hub>

The online support hub offers Customer Relations contact information, installation and measuring instructions, care and maintenance, troubleshooting, FAQs, plus:



REFERENCE KIT  
Login Required  
Download a pdf of the Product Portfolio, Specification Guide & Price List and addendums.

CLIENT SUPPORT  
Login Required  
Download writable worksheets and Designer Sample Kit indexes.



BROCHURES  
Download Product Portfolio, product specific digital brochures and seasonal tabloids.



AUTOMATION SUPPORT  
Download automation information including motor and control information and worksheets.

EVENTS  
</events>



Check out the online calendar. Save the date to see us at events and markets, near you.



SHOWROOMS  
</showrooms>

Find a showroom near you, link to their website and get directions.



explore the new

HARTMANNFORBES.COM



ORDER YOUR SPRING  
UPDATE KITS AT

*[hartmannforbes.com/sample-kits](http://hartmannforbes.com/sample-kits)*

WINDOWCOVERINGS, WALLCOVERINGS AND TEXTILES

HANDCRAFTED OF SUSTAINABLE NATURAL MATERIALS



PO Box 1149 | Tualatin, OR 97062 | [hartmannforbes.com](http://hartmannforbes.com)  
t 503.692.9313 | 888.582.8780 | f 503.692.9315

©2017 HARTMANN&FORBES, INC

