

# HARTMANN & FORBES

GRASSWEAVE ORIGINS™







WOVEN-TO-SIZE

# GRASSWEAVE ORIGINS

---

A DESIGN INDUSTRY CLASSIC

Drawing insight from the past to carry tradition forward, this collection of classic evenly-spaced warp designs made of palm, bamboo husk, and other exotic fibers, delivers beautiful light-play as sun rays gently filter through the open grass weaves.





NEW  
**GENESIS**

This elegant series produces a beautiful play of light through the filter of its open grassweave. Slender, vertical stripes juxtaposed with a relaxed ramie base bring a modern spin to a classic design in colors that seamlessly coordinate with our Driftwood series.



LE6203 Cottonseed



LE6209 Flaxseed



LE6215 Grainseed



LE6236 Linseed

Price Group: 4 | Max Width: 180"  
Available Styles: Roman, Roller, Top Treatment

Shown: LE6215 Genesis – Grainseed, Old Style Roman  
WL417-45 Peninsula – Beach, Wallcovering





NEW

## HEIRLOOM

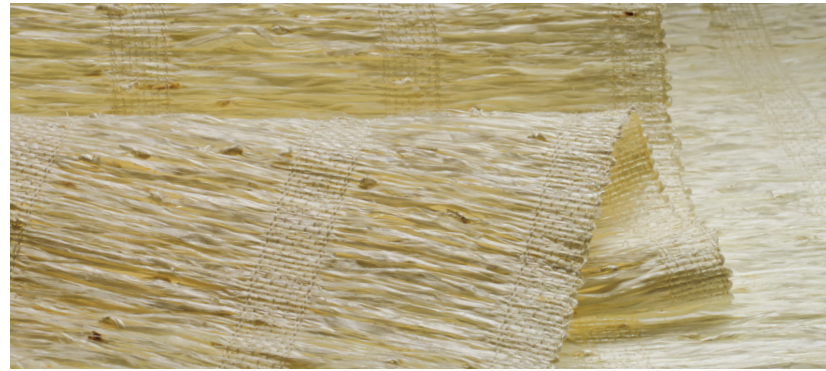
Loomed entirely from textural strands of natural vetiver that are individually hand-placed, Heirloom brings earthy elan to an interior. Thin warp threads play delicate counterpoint to the wavy, rough-hewn weft for an airy, organic design that beautifully filters the light.



LE5909 Branch

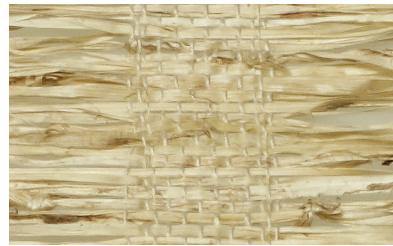




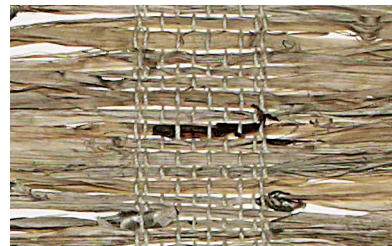


## HERITAGE

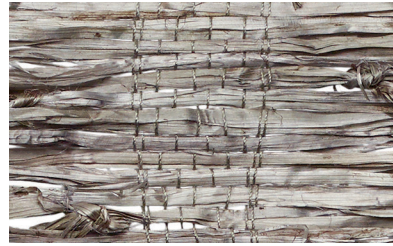
An update on a traditional grassweave design, the subtle sheen and dressy softness of arrowroot provides a seductive allure.



LE1300 Cire



LE1305 Atlas

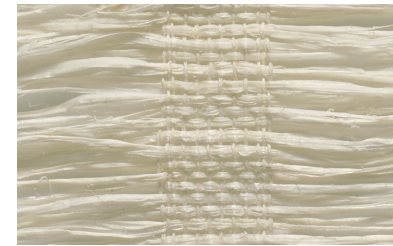


LE1860 Armure

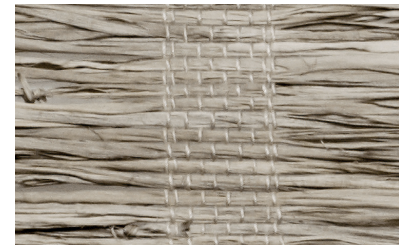


## VINTAGE

A relaxed timeless grassweave pattern that blends effortlessly with contemporary and traditional interiors alike. The matte finish demonstrates a natural and organic nature.



LE1803 Parchment



LE1150 Leno



LE1151 Chamois



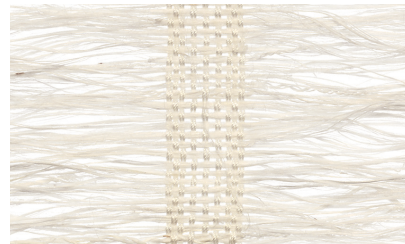
LE1154 Crentone





## HAVEN

Ramie, prized for its beauty and softness, is in full effect in this wondrously airy weave, offered in a delicately neutral palette of warm white and golden straw.



LE1200 Canera



LE1207 Tiaki







Furnishings courtesy - Palecek

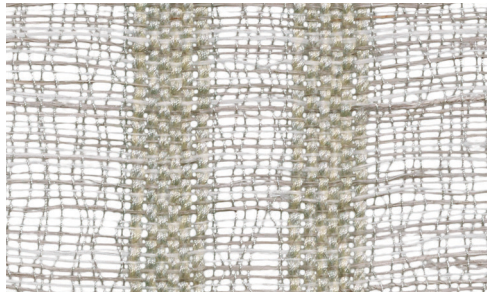


# INTERLACE

Soliciting an interplay between light and fiber, this innovative warp-yarn structure and gauze-like ramie fibers candle incidental light in a graceful dramatic dance.



LE3209 Tawny



LE3215 Ember

Price Group: 4 | Max Width: 180"  
Available Styles: Roman

Shown: LE3209 Interlace - Tawny, Old Style Roman



## TRESTLE

Lending a contemporary charm to any room, this weave captures attention with memorable stripes woven in tone-on-tone arrowroot.



LE1336 Samet



LE1310 Railay

