



HARTMANN & FORBES

NATURAL
WINDOWCOVERINGS,
WALLCOVERINGS
& TEXTILES
HANDCRAFTED
FOR THE TRADE
IN EDITIONS OF ONE

EVERY SOUL ON EARTH DESERVES A PLACE OF REFUGE —
TO REST, AND BE RESTORED, IN BODY, MIND, AND SPIRIT.

IN THIS LIGHT, WE SEEK TO OFFER A SPACE OF PERFECT PEACE,
SURROUNDED BY THE CALM, SOOTHING PRESENCE FOUND IN NATURE.

HERE, THE LIGHT IS ALIVE. SHADOWS ARE WARM AND FRIENDLY.
EVEN SITTING WITH YOUR EYES CLOSED, YOU FEEL ILLUMINATED.

THIS IS THE SANCTUARY ONLY THE NATURAL WORLD CAN GIVE.
A GIFT WE WEAVE BY HAND, AND SHARE WITH YOU, WITH LOVE.

LET THERE BE LIGHT, AND SHADE. AND SANCTUARY, BY NATURE.



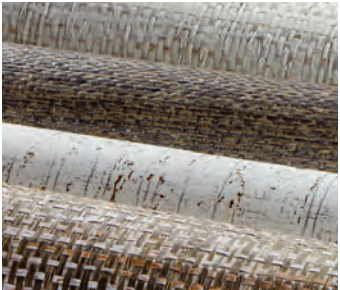
YOURS IN NATURE,



MICHAEL JONES, FOUNDER

CONTENTS

6 H&F DIFFERENCE



18

DESIGNER COLLECTIONS

AMY MEIER

MAX HUMPHREY

J RANDALL POWERS

MICHAEL S SMITH

62

STUDIO CONCEPTS

TWEED

GROOVE

TATTERSALL

CABLE

HAVANA

MELANGE

PIMA

TATAMI

78

WOVEN-TO-SIZE COLLECTIONS

GRASSWEAVE

GRASSWEAVE ESSENCE

GRASSWEAVE ORIGINS™

PAPYRUSWEAVE®

160

TAILORED-TO-SIZE COLLECTIONS

GRASSWEAVE

PAPYRUSWEAVE

COLOURWEAVE®

190

SOFT NATURAL FABRIC COLLECTION

EARTHEWEAVE®

210

PERFORMANCE FABRIC COLLECTIONS

ECOWEAVE®

PRIVACY

SOLARSCREEN

224

NATURAL WALLCOVERING COLLECTIONS

GRASSCLOTH

PAPER WEAVE

SPECIALTY

252

MORE BY-THE-YARD TEXTILES

COLLECTION INDEX

LIVING GREEN

A JOURNEY TO A SUSTAINABLE WAY OF DOING BUSINESS

We are intricately intertwined with our natural world. This connection generates a deep appreciation for the planet and a greater sense that we need to participate in the preservation of its treasures for future generations. We continually seek ways to minimize our impact throughout our harvesting, weaving and finishing processes, as well as drive change within our industry.



Named one of 100 Best Green Workplaces for ten consecutive years



NATURAL FIBERS

SUSTAINABLE MATERIALS OF NOBLE CHARACTER
ARE THE BASIS OF OUR ARTISTIC MEDIUM

We begin the process of creating luxury woven products
by choosing only the finest sustainable fibers,
each rapidly-renewable and grown in well-managed
ecosystems. Every strand is hand selected for
subtle variations of color and texture.



HANDWOVEN ARTISTRY

UTILIZING THE LOOM AS OUR TOOL, WE FOLLOW
TECHNIQUES REFINED OVER GENERATIONS

Our weave masters blend hand-prepared natural fibers using a complex rhythm of warps and wefts. Doing this work completely by hand, rather than machine, affords us more creative freedom to push the boundaries of weave structure and design.





DESIGN BREADTH

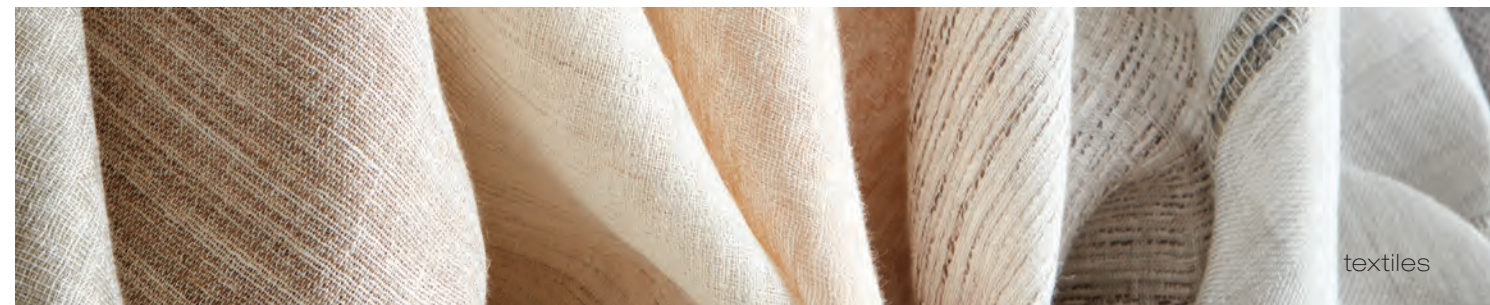
A TIMELESS PALETTE OF EARTHY COLOR
AND TEXTURAL NUANCE

We offer the industry's largest collection of natural, handwoven designs for your window and a unique assortment of natural handcrafted wallcoverings. Our broad range of designs presents an honest reinterpretation of nature's raw beauty. A passion for handweaving, design exploration and a lifelong love of nature continues to fuel the evolution of our collections.

WINDOW & WALL

THE INGENUITY OF THE HAND
RAISES A CRAFT TO FINE ART

With uncompromising, hand-worked detail, every piece we produce is finished to custom specifications by master craftspeople using the highest-quality components. Our boutique approach enables a level of customization and workmanship unique in today's marketplace.





REBECCA WELCH

H&F STUDIO

Drawing on the richness of tradition to design for a better tomorrow, our offering has evolved organically over many years to represent the largest and most diverse collection of its kind.



AMY MEIER



MAX HUMPHREY



J. RANDALL POWERS



MICHAEL S. SMITH

COLLABORATIONS

We love to work hand-in-hand with the design industry's top talent to realize each one's unique vision. This broadens our experience — as well as our product offering — and brings you the finest collection of natural window and wallcoverings.

DESIGNERS

BRINGING UNIQUE BACKGROUNDS, FRESH PERSPECTIVE AND INSPIRATION TO WEAVE DESIGN

One all-embracing aesthetic unites everything we do at Hartmann&Forbes. Whether creating our own collections, or one-of-a-kind collaborations with designers, we aim to offer the most diverse, sustainable, and soul-satisfying selection of designs you can imagine.



AMY
MEIER

“IT WAS MY INTENTION FOR THESE WEAVES
TO WORK AND PLAY OFF EACH OTHER,
CREATING A FAR RICHER COMPOSITION”

Renowned for an aesthetic that seamlessly blends
tradition and innovation, Meier’s collection deftly
fuses inspiration from Japanese design, the Bauhaus
School, and traditional Korean cloth, using the naturally
beautiful Hartmann&Forbes handwoven textiles to
express the organic yet highly structured design.



GRASSWEAVE [WTS]

STIPPLE

Informed by the crisp geometry of the Bauhaus, while capturing the quiet restraint of Japanese design, Stipple is distinguished by its soothing subtlety. Against a ground of refined ramie, a series of small, woven squares produce intriguing nuances in texture and dimension, its neutral palette lending it tonal beauty.



LEAM36-03 Alabaster



LEAM36-06 Opaline



LEAM36-09 Haze



LEAM36-42 Chestnut

Window Price Group: 5 | Max Width: 100"
Available Styles: Roman, Top Treatment

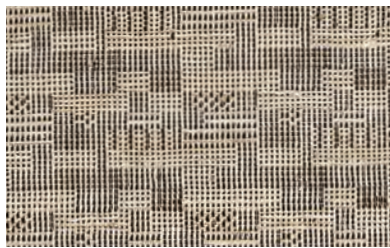
Shown: LEAM36-03 Stipple - Alabaster, Old Style Roman

888.582.8780 | HARTMANFORBES.COM | 021

GRASSWEAVE [WTS]

JOINERY

Paying homage to Bauhaus textile designer Anni Albers, this weave balances the structure of industry with a natural, organic sensibility. Rectangles and squares jacquard-handloomed of textural ramie and multicolored warp fibers form a complex geometry that conjures images of newsprint on a page.



LEAM34-09 Newsprint



GRASSWEAVE [WTS]

FRAMEWORK

The large repeating windowpane motif is inspired by the chogak bo or patchwork style of Korean Bojagi. Masterfully jacquard-handloomed of banana fiber, the textural geometry brings dimension and differing opacities to the quiet, monochromatic composition.



LEAM37-03 Alabaster





GRASSWEAVE [WTS]

FRET

Inspired by the lustrous look of natural horsehair, Fret features an earthy, variegated palette of banana fiber handwoven with black warp thread. The understated design, with its refined texture and iridescent beauty, feels both timeless and current.



LEAM35-87 Alloy



LEAM33-66 Tortoise

GRASSWEAVE [WTS]

STITCH

Stitch balances the linear architecture of the Bauhaus with the soft, natural appeal of Japanese designs. Multicolored abaca is freely hand-placed through an orderly framework of jacquard-handloomed ramie, creating a compelling play of tension and texture and a subtle sense of movement.

Window Price Group: 5 | Max Width: 100"
Available Styles: Roman, Top Treatment

Shown: LEAM33-66 Stitch - Tortoise, Old Style Roman

Window Price Group: 5 | Max Width: 180"
Available Styles: Roman, Roller, Top Treatment



GRASSWEAVE [WTS]
GOSSAMER

Bojagi, a traditional Korean silk patchwork that becomes more beautiful and translucent with age, served as the inspiration for this tonal series. Alternating tight and loose weaves, rendered in ramie and warp threads, produce a beautifully irregular striped pattern, and its natural drape and rich texture highlights Gossamer's handwoven quality and the Japanese aesthetic of wabi-sabi.



LEAM31-03 Strie Chalk



LEAM32-03 Hatch Chalk



Window Price Group: 5 | Max Width: 180"
Available Styles: Roman, Top Treatment



GRASSWEAVE [WTS]

DAPPLE

True to its namesake, Dapple evokes the dreamy look of sunlight peeking through leaves on a tree.

The gauzy ground of handwoven ramie plays host to a freeform grid of ramie slubs. The raised, textural design softly filters the light and lends relaxed refinement to an interior.



LEAM30-03 Parchment

Window Price Group: 5 | Max Width: 180"
Available Styles: Roman, Top Treatment

Shown: LEAM30-03 Dapple – Parchment, Old Style Roman



MAX HUMPHREY

"FOR ME, DESIGN IS NOSTALGIA.
I'M INSPIRED BY THINGS FROM MY
NEW ENGLAND CHILDHOOD"

Max

Recognized as a design change-maker and known for his trademark lived-in layered look, Humphrey's collection celebrates modern Americana with a nod to nostalgia and a fresh take on classic prints and patterns — gingham, quilt, and cable knit — rendered in Hartmann&Forbes' handwoven natural textiles.

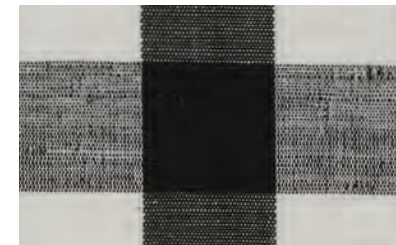


GRASSWEAVE [WTS]
GINGHAM

Humphrey reimagines this traditional gingham check as a versatile neutral. Its simple, medium-scale motif is loomed of natural ramie fibers, creating subtle variations in each square that soften the geometric grid and highlight its handcrafted quality. The weft fibers are dyed to match the warp, infusing the two-tone pattern with graphic impact and visual dimension.



LEMH500-21 Gold



LEMH500-87 Black

Window Price Group: 5 | Max Width: 180"
Available Styles: Roman, Top Treatment

Shown: LEMH500-87 Gingham – Black, Old Style Roman



GRASSWEAVE [WTS]

GRAIN SACK

Inspired by vintage grain sacks, this series elevates the humble carryall to a nostalgic, handcrafted design. The sturdy ramie weave is accented with slender stripes of red, white or blue against a denim or natural ground, evoking a quintessential Americana mood in a fresh format.



LEMH502-06 Natural

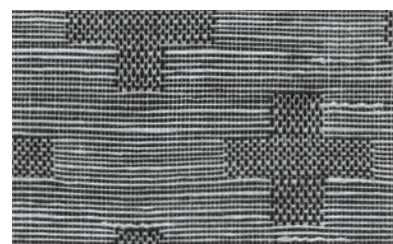


LEMH502-57 Denim

Window Price Group: 5 | Max Width: 180"
Available Styles: Roman, Roller, Top Treatment

Shown: LEMH502-06 Grain Sack – Natural, Old Style Roman





LEMH501-84 Charcoal

GRASSWEAVE [WTS]

CROSS

An age-old symbol in nature and iconography, the venerable cross is reinterpreted in jacquard-handloomed ramie. The crosses, formed of an intricate check pattern, float in a textural landscape delineated by horizontal lines, its tonal black-and-white palette producing a primitive, understated design.

Window Price Group: 5 | Max Width: 100"
Available Styles: Roman, Top Treatment

Shown: LEMH501-84 Cross – Charcoal, Old Style Roman



GRASSWEAVE [WTS]

QUILT

A modern take on traditional quilts, this series nods to the nostalgia of handmade crafts with its classic chain motif. The geometric pattern and two tonal colors provide a contemporary twist, while jacquard-handloomed ramie creates subtle variations in the weave for rich texture and visual dimension.



LEMH504-18 Faded Khaki



LEMH504-57 Indigo

Window Price Group: 5 | Max Width: 100"
Available Styles: Roman, Top Treatment

Shown: LEMH504-57 Quilt – Indigo, Old Style Roman
WL374 Alpine – Aspen, Wallcovering

GRASSWEAVE [WTS]

CABLEKNIT

Reminiscent of iconic New England sweaters, this series is distinguished by its rich dimension rendered on a jacquard hand loom. A dense weave of refined ramie features alternating cable ribs framed in columns. They twist down planes of fabric, imparting visual depth and subtly raised texture in a design at once classic and contemporary.



LEMH503-57 Heathered Blue



LEMH503-15 Heathered Gray

Window Price Group: 5 | Max Width: 100"
Available Styles: Roman, Top Treatment





J. RANDALL POWERS

“THIS COLLECTION IS ABOUT THE
CONFIDENCE OF A STRUCTURED PATTERN,
TAILORED AND REFINED, BUT OF A SCALE
THAT IS PLAYFUL AND INVIGORATING”

Celebrated for his classic, yet cosmopolitan style, the
J. Randall Powers Collection reveals the artisanal quality
of Hartmann&Forbes' handwoven textiles combined with
Powers' penchant for tailored patterns with a playful twist.



CHRISTOPHER CHECK

A crisp windowpane pattern defines the Christopher Check Collection. Handwoven windowcovering of ramie, and gravure-printed wallcovering on a ground of natural sisal, are framed in bold hues, imparting a graphic punch that enlivens the rigorous geometry. Sophisticated yet friendly, it suits formal and informal spaces alike.

GRASSWEAVE [WTS]



LEJP21-72 Brick



LEJP21-33 Slate



LEJP21-18 Taupe

WALLCOVERING



WLJP24-72 Brick



WLJP24-33 Slate



WLJP24-18 Taupe

Window Price Group: 5 | Max Width: 180"
Available Styles: Roman, Top Treatment

Wall Width: 36" (91.4cm) | Length: 12yds (10.9m)

Shown: LEJP21-72 Christopher Check – Brick, Old Style Roman
WLJP24-72 Christopher Check – Brick, Wallcovering



GRASSWEAVE [WTS]

BALDWIN STRIPE

An open weave of yarns and dyed ramie form a relaxed rectangular motif. Its intricate warp and weft lending depth and detail to the interior geometry. Artfully accented with bands of color in a subdued, subtle palette of mist and cream, the vertical stripes add layers of tonal beauty to the gauzy ground.



LEJP23-36 Mist



LEJP23-06 Cream

Window Price Group: 5 | Max Width: 120"
Available Styles: Roman, Top Treatment

Shown: LEJP23-36 Baldwin Stripe – Mist, Traditional Style Roman





GRASSWEAVE [WTS]

APSLEY CHECK

Clean-lined and classic, Apsley Check is defined by small, even squares that recall the timeless Shepherd's check. Woven of refined ramie, this weave evokes the textural, lightweight hand of linen and pairs beautifully with the geometric Christopher Check series.



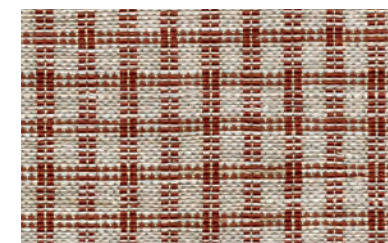
LEJP20-03 White



LEJP20-18 Taupe



LEJP20-33 Slate



LEJP20-72 Brick

JG PLAID

A fresh take on traditional plaid, strong crisscrossing pencil stripes in an irregular sequence form an intriguing dimensional look. A woodland palette of moss and linen play relaxed counterpoint to the structured sensibility.

Woven-to-Size windowcovering is intricately handloomed of refined ramie, while handcrafted wallcovering is gravure printed atop handwoven sisal.

GRASSWEAVE [WTS]



LEJP22-12 Moss on Linen

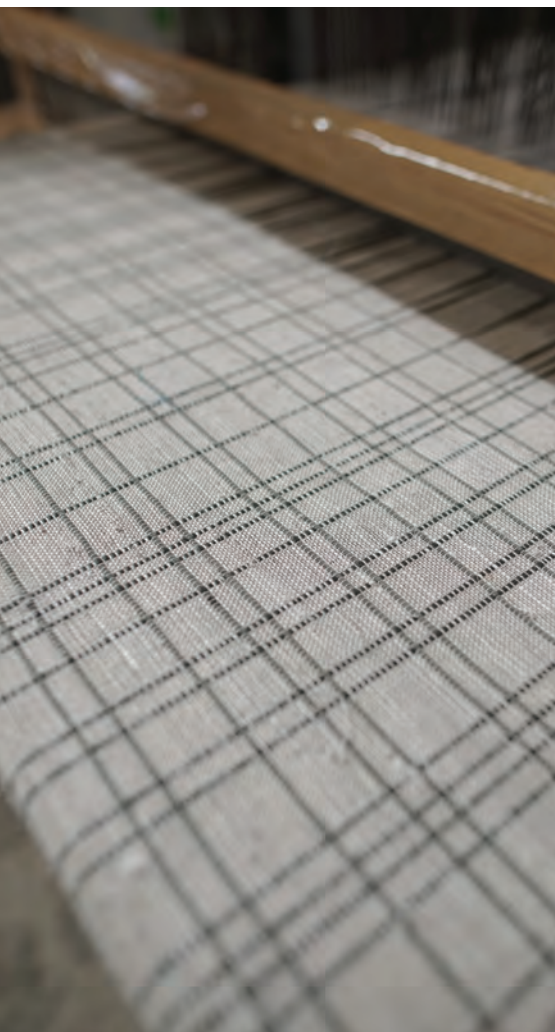


LEJP22-78 Linen on Moss

WALLCOVERING



WLJP25-78 Linen on Moss



Window Price Group: 5 | Max Width: 180"
Available Styles: Roman, Top Treatment

Wall Width: 36" (91.4cm) | Length: 12yds (10.9m)

Shown: LEJP22-12 JG Plaid – Moss on Linen, Old Style Roman
WLJP25-78 JG Plaid – Linen on Moss, Wallcovering





MICHAEL S. SMITH

"THIS COLLECTION IS ABOUT REIMAGINING
THE PAST TO CREATE SOMETHING
ACCESSIBLE FOR BEAUTIFUL INTERIORS"

Known for his signature blend of European Classicism and American Modernism, Smith's collection exudes a well-travelled, comfortable sensibility. The blending of historically referenced patterns in bold, simple colors, combined with the textural detailing expected from Hartmann&Forbes, offers a fresh, globally-inspired collection of natural window and wallcoverings.



WALLCOVERING

MADELEINE

At once romantic and refined, the Madeleine wallcovering was inspired by a fern motif often used by Madeleine Castaing, the iconic 20th-century French designer and antiques dealer. Natural sisal is meticulously embroidered in a palette of sage, linden, and teal, creating a dimensional pattern of interlocking ferns, which is framed by a crisp windowpane grid.



WLMS77-30 Linden



WLMS77-54 Sage



WLMS77-55 Teal

GRASSWEAVE [WTS]

JACOB STRIPE

For Jacob Stripe, lustrous, textural ramie is handwoven in a variegated-stripe pattern that recalls the charming scalloped shop awnings found in French seaside villages. Its relaxed, sun-washed look and soft-hued palette provide the perfect complement to the Madeleine wallcovering.



LEMS76-30 Linden



LEMS76-54 Sage



LEMS76-55 Teal

Window Price Group: 5 | Max Width: 180"
Available Styles: Roman, Roller, Top Treatment

Wall Width: 36" (91.4cm) | Length: 9yds (8.2m)

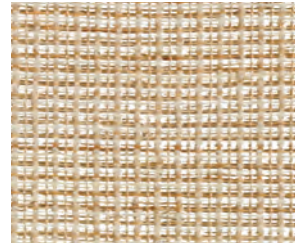
Shown: WLMS77-20 Madeleine – Linden, Wallcovering



GRASSWEAVE [WTS]
CITY STITCH

This handwoven design is a modern interpretation based on ancient Japanese Sashiko stitching from the Edo period. A unique weave that combines functional embroidery with meticulous, decorative stitching to create a sophisticated mix of texture, color and pattern.

features a 2" plain woven border



LEMS71-06 Ivory



LEMS71-09 Limestone



LEMS71-72 Ruby



LEMS71-57 Lapis



LEMS71-54 Malachite



WLMS75-42 Bronze



WLMS75-54 Malachite



WLMS75-57 Lapis



WLMS75-72 Ruby

WALLCOVERING

KAMAKURA

Merging geometric shapes with Japanese imagery, this complex composition depicts beauty and serenity in a thoughtful, artistic way. In transposing the stenciled design to a textured grasscloth, Smith has created a layered backdrop that can coordinate seamlessly with both modern and traditional interiors.

Window Price Group: 5 | Max Width: 180"
Available Styles: Roman, Top Treatment

Wall Width: 36" (91.4cm) | Length: 8yds (7.3m)

Shown: LEMS71-54 City Stitch – Malachite, Traditional Style Roman
WLMS75-54 Kamakura – Malachite, Wallcovering





GRASSWEAVE [WTS]

CASCADE

An elegant and sophisticated use of the traditional striation pattern, employing soft colors of handwoven threads. The vertical stitch pattern is asymmetrical and highlighted by subtle but glamorous metallic strands.



LEMS70-12 Ivory



LEMS70-55 Malachite



LEMS70-51 Limestone

WALLCOVERING

MAJORELLE

Inspired by the famous French artist Jacques Majorelle and his world-renowned garden and home in Marrakesh, Morocco, this sublime wallcovering features graphic arrangements reminiscent of architectural lattice screens found in palaces and temples from Morocco to the Middle East.



WLMS73-06 Sandstone

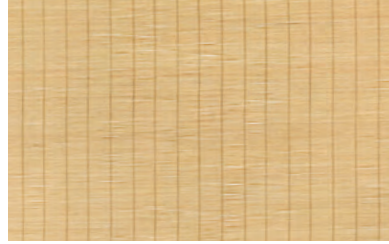


WLMS73-32 Celadon

Window Price Group: 5 | Max Width: 180"
Available Styles: Roman, Roller, Top Treatment

Wall Width: 36" (91.4cm) | Length: 8yds (7.3m)

Shown: LEMS70-12 Cascade – Ivory, Old Style Roman
WLMS73-06 Majorelle – Sandstone, Wallcovering



CWMS81 Hinoki



CWMS80 Matsu

COLOURWEAVE [TTS]

JUNSEI

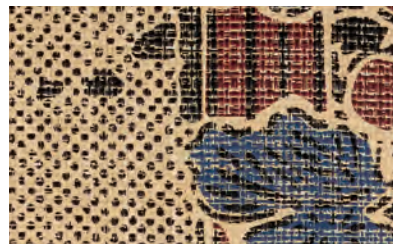
Inspired by traditional Japanese screens, this refined weave is handwoven with thinly sliced bamboo, allowing the sunlight to gently filter in.



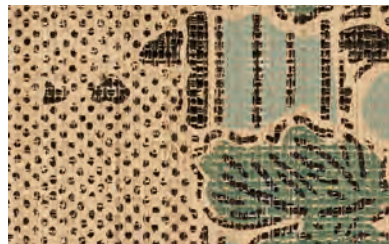
CWMS82 Tochi



WLMS74-51 Amber



WLMS74-57 Red/Blue



WLMS74-30 Verde



WLMS74-18 Stone



WLMS74-12 Mist

WALLCOVERING

JAPÓN GARDEN

An enduring, woven wallcovering imbued with rich, bold patterns that evoke flora in unusual and unexpected ways. Inspired by antique, hand-carved abaca stencils, these designs bring depth and interest to any room. Hand-mixed, saturated pigments are printed over a neutral background to create a warm, artistic and inviting effect.

Window Price Group: 3 | Max Width: 94"
Available Styles: Roman, Roller, Top Treatment

Wall Width: 36" (91.4cm) | Length: 8yds (7.3m)

Shown: CWMS80 Junsei – Matsu, Sudare Style Roman
WLMS74-51 Japón Garden – Amber, Wallcovering





WALLCOVERING

AGRA LATTICE

Inspired by beautiful, hand-turned spindle designs used throughout Indian architecture for generations, Agra Lattice depicts a maze-like, hand-stenciled pattern with abstracts that play upon form, texture and movement. Smith has adapted the traditional spindle motif and has reinterpreted it into a rhythmic arrangement on rich, woven wallcovering that is as meditative as it is vibrant.



WLMS72-27 Sandstone



WLMS72-51 Limestone



WLMS72-57 Azul



Width: 36" (91.4cm) | Length: 8yds (7.3m)

Shown: WLMS72-57 Agra Lattice – Azul, Wallcovering



H&F STUDIO CONCEPTS

ARCHETYPE WEAVES IN THE MAKING

Founded by artistic curiosity and aimed at presenting a grouping of individual, limited-edition designs of exotic fibers that, over time, may evolve and reside inside a broader collection.

LE4339 TWEED

Created of ramie and interweaving tones of refined gray and neutral warps, this openly checked pattern is a light and modern approach to historical tweed.





LE4842 HAVANA

Defined by distinctive plaid stripes enriched with an intricate check pattern adding depth and definition against a beige backdrop, Havana is loomed with hand-placed fibers of black abaca and thick, textural ramie. The sensibility is at once relaxed and tailored.

Price Group: 4 | Max Width: 180"
Available Styles: Roman, Top Treatment

Shown: LE4842 Havana, Old Style Roman





LE4481 TATTERSALL

Created in honor of the historical 18th century Tattersall blanket pattern, this modern perspective is composed of interwoven indigo warp threads and ramie, highlighting strong vertical lines with contrasting neutrals.





LE4715 MELANGE

A multihued mix of fibers marks the Melange design. Ramie, palm, and black abaca are skillfully twisted together to evoke the heathered look of eagle feathers. The weave – distinctive and dense – combines natural colors to create a slanted, impressionistic pattern.

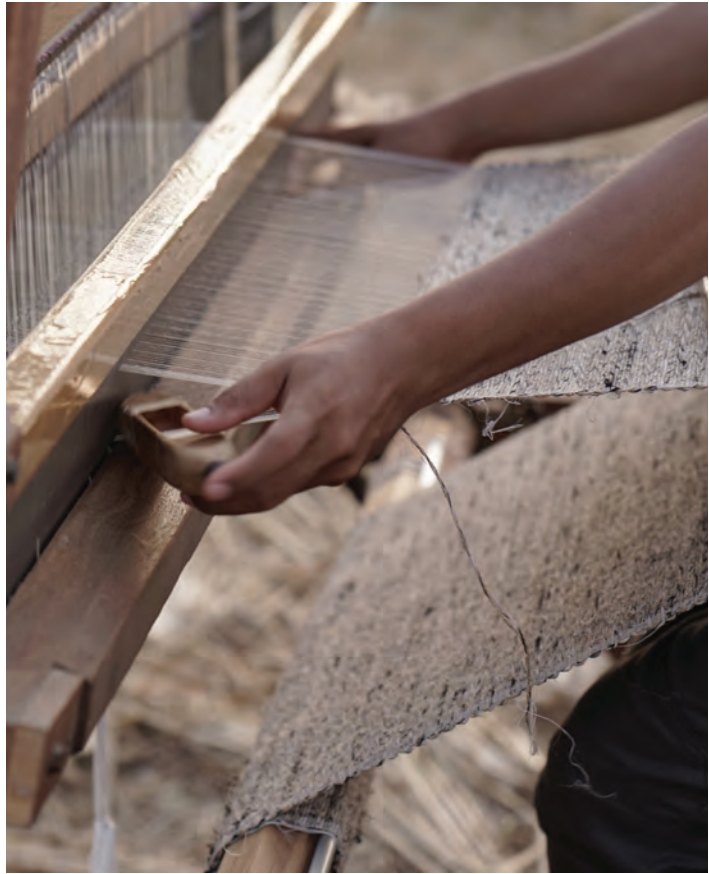
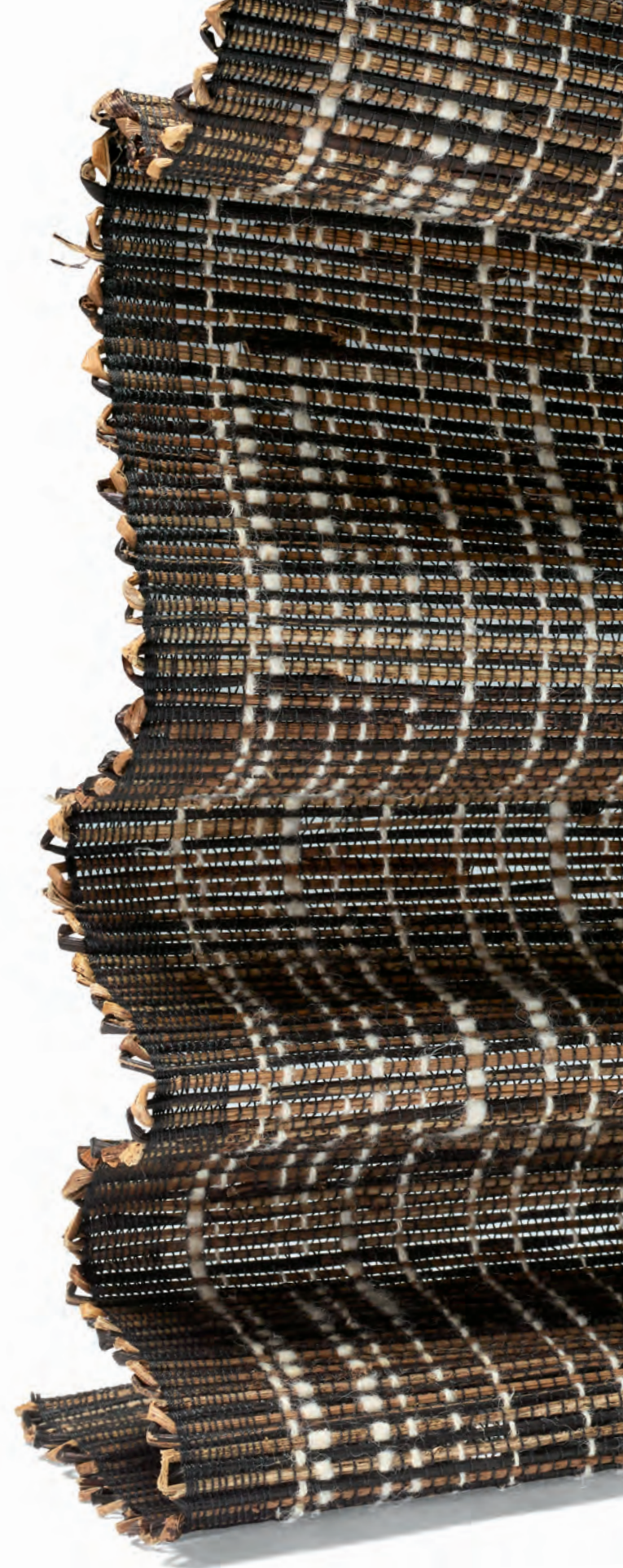




Table courtesy - O'Hara Studio | Chairs courtesy - Tiffany Home Design

LE4642 GROOVE

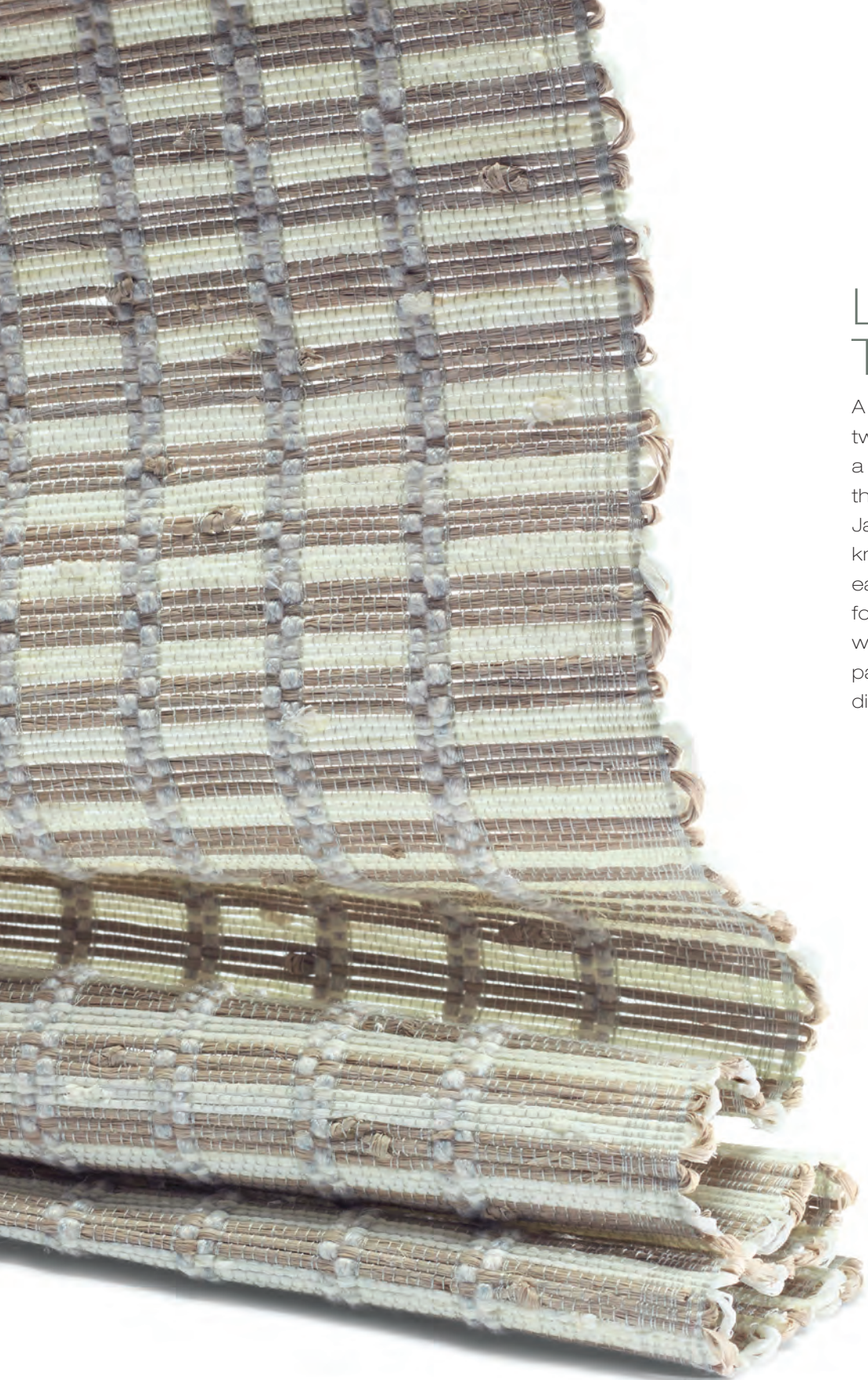
Lending a vibrant and earthy uptake on mid-century modern, this upbeat and textural design of abaca fiber is complemented with hand-placed water hyacinth and a continuous warp thread of woody neutrals.



Price Group: 4 | Max Width: 180"
Available Styles: Roman, Roller, Top Treatment

Shown: LE4642 Groove, Old Style Roman

888.582.8780 | HARTMANNFORBES.COM | 073



LE4918 TATAMI

A thick warp of double-twisted palm yarns yields a textural landscape that conjures traditional Japanese mats. Hand-knotted fibers in two earthy colors combine to form a tonal grid pattern, while allowing light to pass through like a dimensional screen.



LE5051 PIMA

Masterfully interwoven with a mix of thick and thin ramie fibers creating a variegated palette, Pima features a freeform composition of subtle, open stripes. Elegant, white striations are reminiscent of cotton fields, which enhances the tactile richness and rustic-meets-refined feel.



Desk courtesy - The Joinery

LE4587 CABLE

Inspired by centuries-old traditional African hand braiding, this textural pattern is punctuated by intricately-braided dark ramie and enlightened by playful cream warp threads.



Price Group: 4 | Max Width: 180"
Available Styles: Roman, Top Treatment

Shown: LE4587 Cable, Old Style Roman

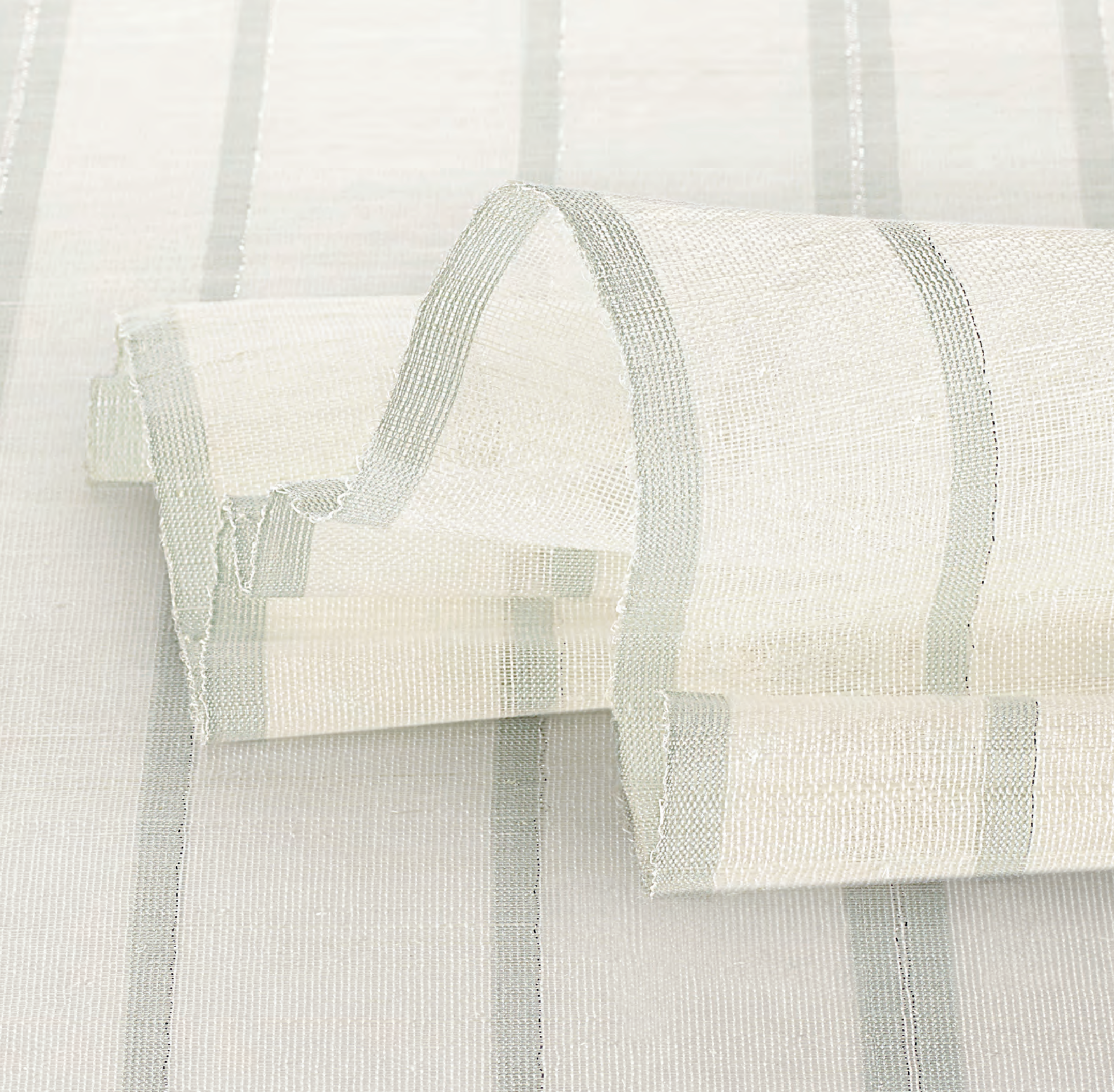


CUSTOM
[WTS]
WOVEN-TO-SIZE

In this time-honored, one-of-one method, we handweave each shade on traditional wooden looms to a window's dimensions. This painstaking technique comes with a longer lead time, but delivers an exquisite loom-finished edge on shades up to 180" wide, without seams. Each shade is then hand-finished to the most exacting standards, with the highest-quality components, in our Oregon facility.

COLLECTIONS

- GRASSWEAVE [WTS]
- GRASSWEAVE [WTS] ESSENCE
- GRASSWEAVE [WTS] ORIGINS
- PAPYRUSWEAVE [WTS]



WOVEN-TO-SIZE

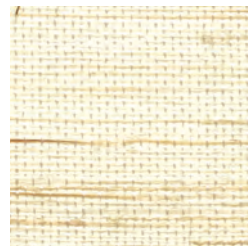
GRASSWEAVE

OUR SIGNATURE HANDWOVEN LINE

A modern collection of organic textures, earthy colors and sophisticated patterns. Artisanally handwoven of premium natural fibers, ranging from arrowroot, ramie, abaca, banana tree, vetiver root, palm leaf, water hyacinth and walingi.

ELEMENTS

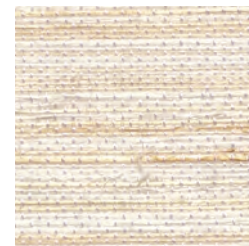
Fresh, pure and timeless, this richly refined linen-like textile offers sophisticated beauty in a wide array of colorways ranging from neutral hues to dramatic darker tones.



LE1006 Cambric



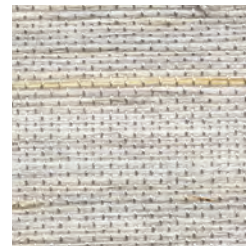
LE1053 Silesia



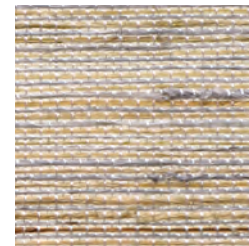
LE1062 Challis



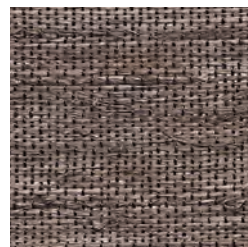
LE1055 Sindon



LE1050 Sendal



LE1015 Cambresine



LE1054 Borato



LE1084 Zephyr



LE1087 Georgette

Price Group: 4 | Max Width: 180"
Available Styles: Roman, Roller, Top Treatment

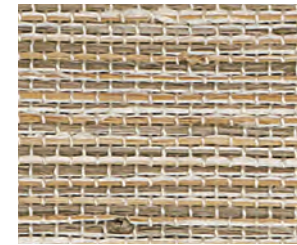
Shown: LE1053 Elements - Silesia, Old Style Roman



Furnishings courtesy - Tiffany Home Design | Rug courtesy - Tufenkian Artisan Carpets



LE1107 Utara



LE1124 Togo



LE1109 Selatan



LE1160 Sapi



LE1187 Rinca

DRIFTWOOD

Inspired by the casual elegance of sun-washed driftwood, this design blends ivory with weathered hues of gold, grey and off-black.



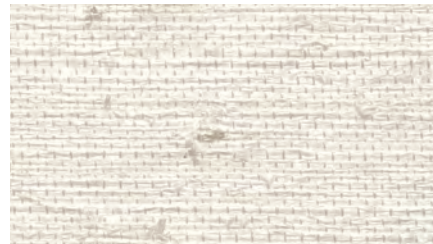
Price Group: 4 | Max Width: 180"
Available Styles: Roman, Roller, Top Treatment

Shown: LE1160 Driftwood – Sapi, Traditional Style Roman with Newton



GLIMMER

This lustrous fine weave is ethereal, almost weightless, accented with micro hand knots that inject a pared-down luxe aesthetic.



LE1003 Shantung



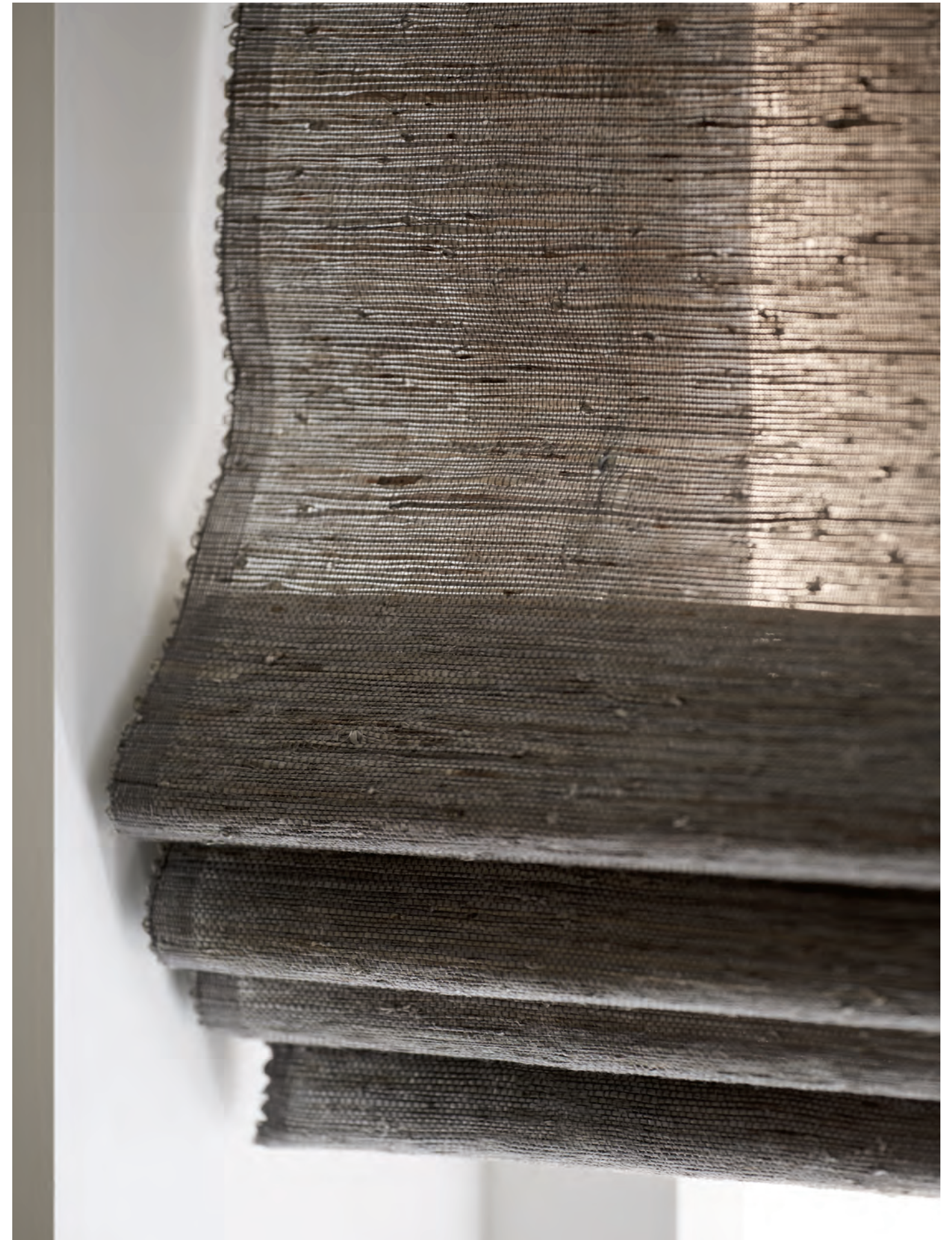
LE1051 Tulle



LE1303 Tamin



LE1360 Zanella



Price Group: 4 | Max Width: 180"
Available Styles: Roman, Roller, Top Treatment

Shown: LE1360 Glimmer – Zanella, Old Style Roman



INTERWOVEN

Playing with the drama of light and dark, edge-cut reeds fade in and out of the neutral ground for a unique chiaroscuro effect.



LE1057 Seychelles



LE1056 Camaca

Price Group: 4 | Max Width: 180"
Available Styles: Roman, Top Treatment

Shown: LE1057 Interwoven – Seychelles, Old Style Roman

TABARET

Influenced by vintage European linen, this handwoven textile of ramie fiber offers subtle variegated stripes in nature's hues, creating a harmonious mix of status and pedigree.



LE2630 Lawn



LE2660 Greylake



LE2657 Lagoon



LE2645 Brownstone

Price Group: 4 | Max Width: 180"
Available Styles: Roman, Roller, Top Treatment

Shown: LE2657 Tabaret - Lagoon, Old Style Roman

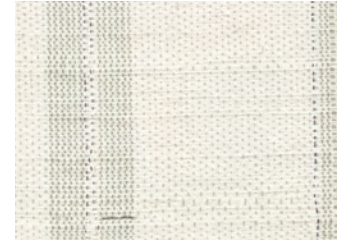


Rug courtesy - Tiffany Home Design



GLISTEN

A delicate accent of silvery filaments infuses this collection with metallic that sparkles under incandescent lighting.

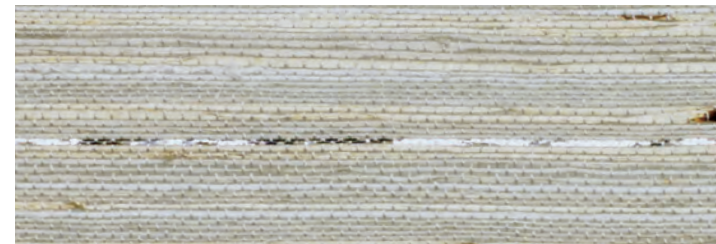


LE1403 Aura

No Roller



LE1421 Calcite



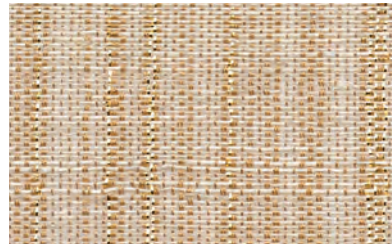
LE1423 Nautilus

Price Group: 4 | Max Width: 180"
Available Styles: Roman, Roller, Top Treatment

Shown: LE1421 Glisten – Calcite, Old Style Roman

RAINFALL

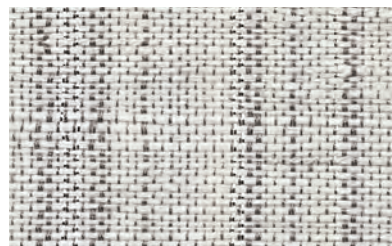
To create a pleasant variance, softly reflective metallic and colored warp threads dance with white ramie weft fibers in harmonious, handwoven choreography.



LE2021 Sunrise



LE2012 Dawn



LE2039 Dusk



LE1030 Vatulele



LE1032 Namale



LE1024 Hutan

PATHWAYS

Stripes are the hallmark detail in this collection of exquisite gauzy weaves. Presented either as open or feathered stripes.



LE1020 Awan

Price Group: 4 | Max Width: 180"
Available Styles: Roman, Top Treatment

Shown: LE2021 Rainfall – Sunrise, Old Style Roman

Price Group: 4 | Max Width: 180"
Available Styles: Roman, Top Treatment



Rug courtesy - Tufenkian Artisan Carpets



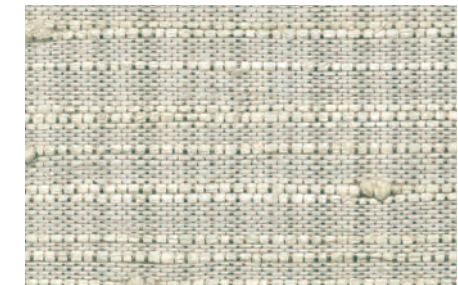
LE2203 Whitecap

TARTAN

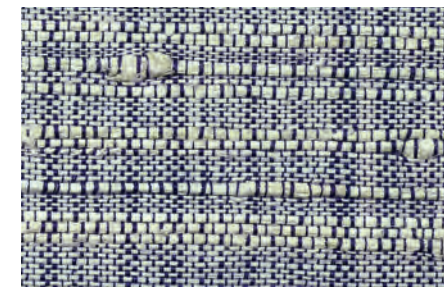
Artisans masterfully guide shuttles wound with handspun ramie, in variegated thicknesses, through a composition of colored threads to achieve this haberdashery-inspired tartan pattern. The occasional appearance of hand-tied knots enhances the design's tactile richness and approachability.



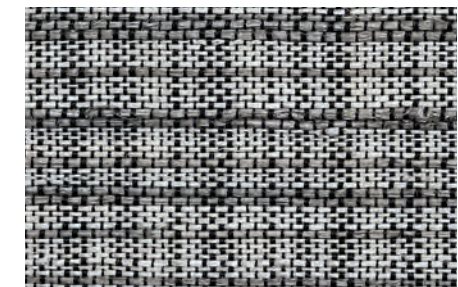
LE2212 Sandle



LE2215 Briarwood



LE2257 Lapis



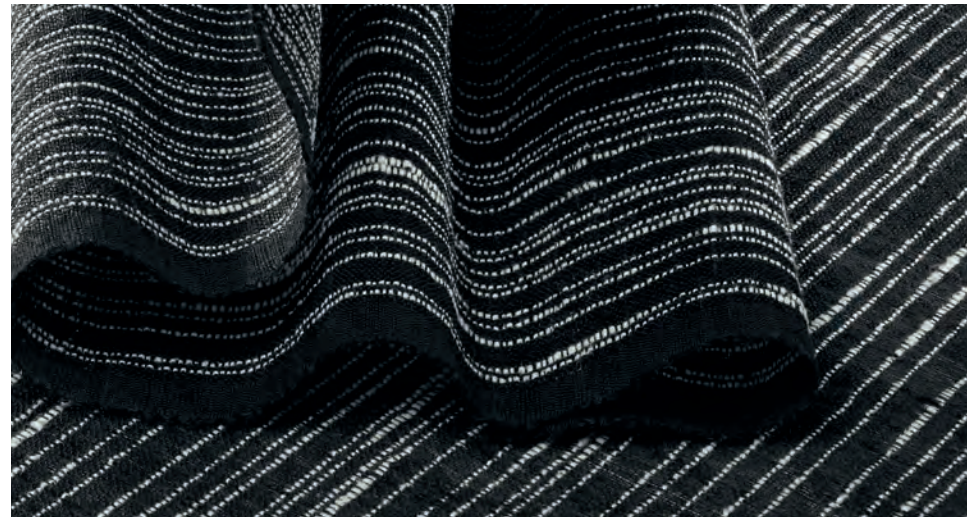
LE2260 Cobblestone

Price Group: 4 | Max Width: 180"
Available Styles: Roman, Roller, Top Treatment

Shown: LE2212 Tartan - Sandle, Splitview™ Style

JAZZ

Inspired by the visual rhythm of classical guitar strings, the Jazz Series imbues the tonal qualities of a bygone era, yet leans toward the future.



LE4003 Arpeggio



LE4006 Tremolo



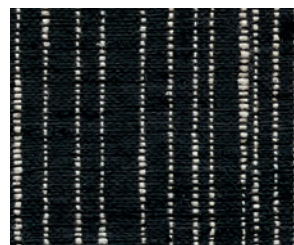
LE4021 Bridge



LE4060 Fusion



LE4045 Staccato



LE4087 Legato

Price Group: 4 | Max Width: 180"
Available Styles: Roman, Roller, Top Treatment

Shown: LE4087 Jazz - Legato, Roller Style with Flat Valance and Newton



Credenza courtesy - The Joinery



Rug courtesy - Tufenkian Artisan Carpets



TISSAGE

Inspired by horsehair weaving traditions, layers of chestnut, grey, caramel and cocoa are woven for a rich texture. Perfect for dramatic shading statements.



LE1218 Cremello



LE1239 Dapple



LE1242 Arabian



LE1257 Halus



LE1255 Sorrel

Price Group: 4 | Max Width: 180"
Available Styles: Roman, Roller, Top Treatment

Shown: LE1218 Tissage - Cremello, Rollerfold with Valance

CROSSHATCH

A chic interpretation of chambray fabric, this series is woven with palm fibers and Italian-inspired spun yarn that shows evidence of its innovative construction.



LE1606 Natural



LE1609 Wheat



LE1618 Flax



LE1639 Dust



LE1660 Thunder

Price Group: 4 | Max Width: 180"
Available Styles: Roman, Roller, Top Treatment

Shown: LE1660 Crosshatch – Thunder, Traditional Style Roman





Table courtesy - The Joinery | Chairs courtesy - Tiffany Home Design

WICKER

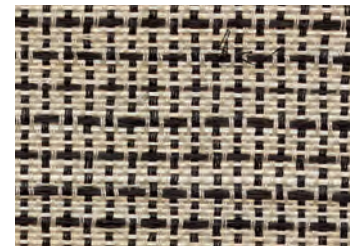
The legacy of hand-weaving wicker basketry and furnishings dates back to the ancient Mesopotamians. Inspired by this tradition, Wicker offers a superior balance of woven textures and natural hues.



LE4106 Cane



LE4136 Willow



LE4187 Rattan



Price Group: 4 | Max Width: 120"
Available Styles: Roman, Roller, Top Treatment

Shown: LE4136 Wicker - Willow, Old Style Roman



RHYTHM

Inspired by indigenous music tradition and its melodic essence, this artisanal textile series is handwoven using original foot-treadle looms. This intensive process results in patterned compositions that add a vibe of tribal heritage to an interior space.



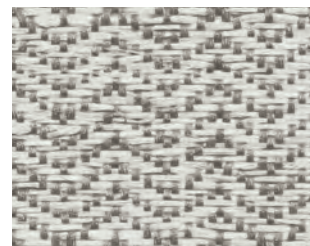
LE2912 Beat



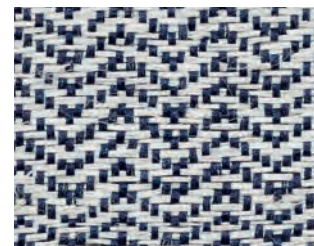
LE2960 Pulse



LE2712 Chords



LE2739 Keys



LE2781 Notes



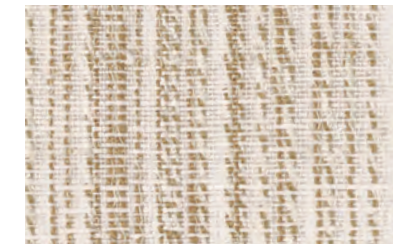
Price Group: 4 | Max Width: 120"
Available Styles: Roman, Roller, Top Treatment

Shown: LE2781 Rhythm – Notes, Old Style Roman
LE2257 Tartan – Lapis [WTS] & TBD57 Diamond – Denim Handwoven Border Trim, Pillow



AURA

A complex design with a spirited sensibility, this refined weave creates a gentle and meditative atmosphere.



LE3303 Spirit



LE3312 Charisma



LE3309 Mystique



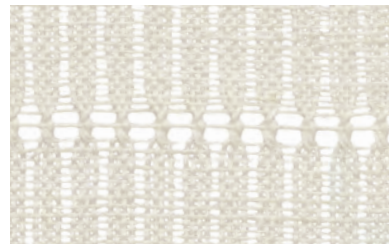
LE3315 Karma



LE3387 Chakra

Price Group: 4 | Max Width: 180"
Available Styles: Roman, Roller, Top Treatment

Shown: LE3387 Aura – Chakra, Roller with Flat Valance and Newton
U18 8000 – Khaki, Rollershade



LE2303 Blanc



LE2306 Naturel

MACRAME

A bohemian expression with a free spirit, this uniquely woven natural textile is unassumingly elegant, offering a casual charm in its soft, muted color palette.



LE2336 Gris



Price Group: 4 | Max Width: 120"
Available Styles: Roman, Roller, Top Treatment

Shown: LE2336 Macrame - Gris, Old Style Roman

INTERBRAID

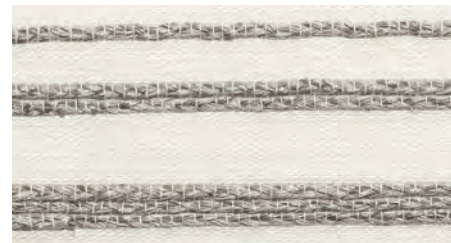
Intricately handwoven ramie braids in pale grey and golden wheat delicately rise above a finely woven field. The unique horizontal pattern has a gentle rhythm which lends a natural restfulness and comfort to a room.



LE1906 Blonde



LE1903 Champagne



LE1939 Ash



LE1960 Heather

MESA

Inspired by Southwestern weaving traditions, palm and ramie fibers in modern earth tones mingle with hand-placed water hyacinth strips for textural dimension. This tapestry-like design adds luxurious layers of warmth and artistic beauty to an interior.



LE2121 Adobe



LE2115 Pueblo



Price Group: 4 | Max Width: 180"
Available Styles: Roman, Top Treatment

Shown: LE2121 Mesa – Adobe, Traditional Style Roman & Pillow
WL414-12 Seaboard – Landing, Wallcovering

ILLUMINATION

A minimalist weave with subtle sheen for nonchalant luxury. Layered shadings of ivory and misty grey offer elegance and beauty.

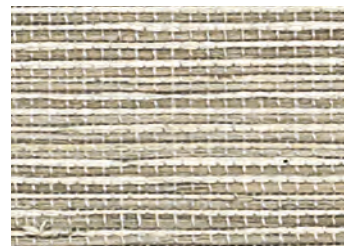


LE1301 Barege

No Roller



LE1292 Pasir



LE1064 Madras



LE1284 Bishan

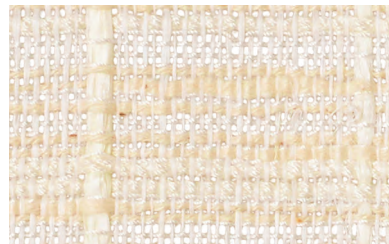


Price Group: 4 | Max Width: 180"
Available Styles: Roman, Roller, Top Treatment

Shown: LE1284 Illumination – Bishan, Traditional Style Roman

INTERWOVEN II

This intricate open weave evokes contemplation and relaxation with its nuanced palm, ramie and soft yarn textures.



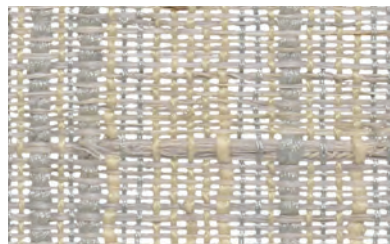
LE2503 Imperial



LE2521 Delmar



LE2515 Solana



LE2536 Clearwater

THATCH

The beautiful texture of a thatched roof is the inspiration for this series, a medium-weight textile offering privacy and a casual point of view to an interior.



LE1703 Wrafton



LE1100 Cassimere



LE1805 Buckskin



LE2409 Root

EARTHEN

Handwoven of vetiver, a hearty organic root fiber with a warm woody scent, this weave is grounded and earthy offering interiors a complex textural identity that is exotic, yet modern.



LE2439 Stem



LE2487 Seed

Price Group: 4 | Max Width: 180"
Available Styles: Roman, Top Treatment

Shown: LE2409 Earthen - Root, Old Style Roman

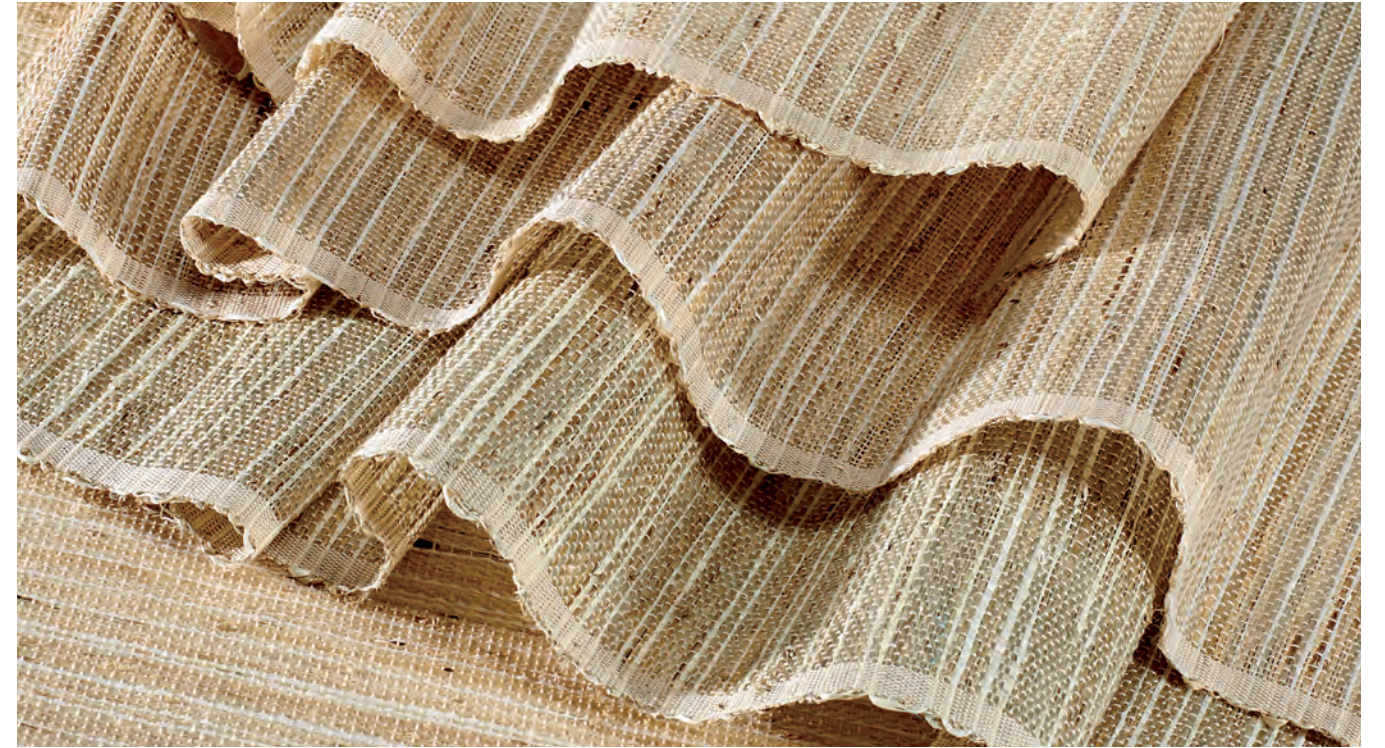


CABANA

Densely-woven contrasting fibers in subtle hues create a relaxed and approachable weave in a sand tone that evokes a laid-back island vibe.



LE1130 Palm



SHALE

Referencing the raw beauty of high desert geology, naturalistic color bands are stacked to achieve a strie effect. Arrowroot fibers in shades of desert sand combine for tonal beauty.



LE1506 Sand



LE1512 Dune



LE1530 Sage

WOODSTOCK

A naturalistic design in deep woodland colors of walnut, moss and straw. This weave summons a cozy mountain feeling.



LE1169 Moorea





WOVEN-TO-SIZE

GRASSWEAVE ESSENCE

A SHADE FOR EVERY ROOM

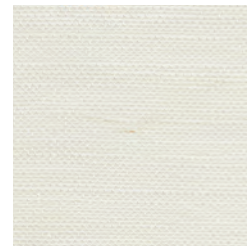
A versatile plain weave of ramie fiber, providing a design foundation for every space and style. Lightweight construction and sophisticated colorways pair with a wide range of other H&F collections and features a myriad of custom capabilities.

NEUTRAL TONES

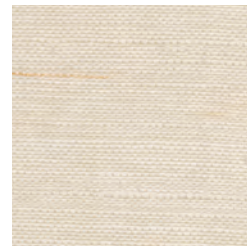
Muted colors with underlying hues that can change depending on the lighting. Complements primary and secondary colors.



LE3003 Cloud



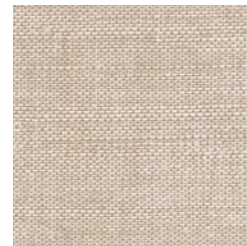
LE3006 Shell



LE3012 Sand



LE3027 Cork



LE3118 Brush

Price Group: 4 | Max Width: 180"
Available Styles: Roman, Roller, Top Treatment

Shown: LE3012 Essence – Sand with 2" edge, Roller Style



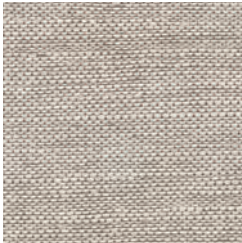


EARTH TONES

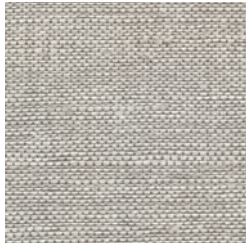
Colors found in nature, earth tones create a warm and peaceful interior.



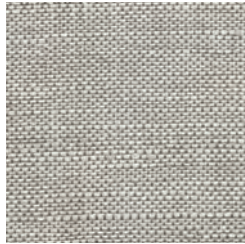
LE3036 Ash



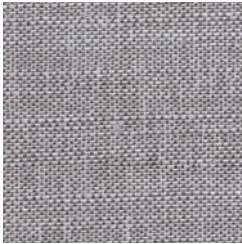
LE3418 Linseed



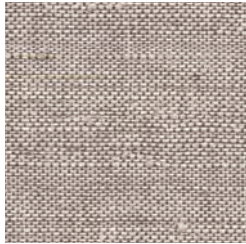
LE3039 Fog



LE3015 Muslin



LE1039 Lustring



LE3018 Sterling

Price Group: 4 | Max Width: 180"
Available Styles: Roman, Roller, Top Treatment

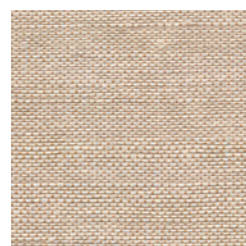
Shown: LE3015 Essence - Muslin, Roller Style

Furnishings courtesy - Tiffany Home Design | Rug courtesy - Tufenkian Artisan Carpets

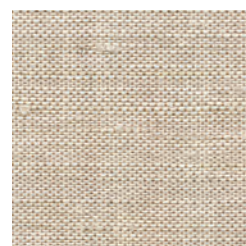


WARM TONES

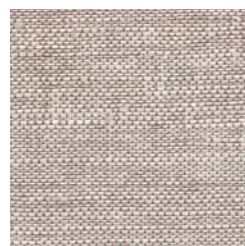
Warm tones breathe energy, positivity and a sense of sunshine into any room.



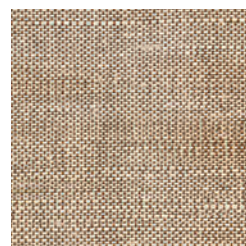
LE3009 Citrine



LE1012 Farandine



LE3139 Lark



LE3042 Wilderness



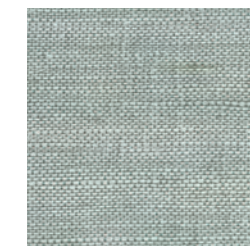
LE3130 Bisque

Price Group: 4 | Max Width: 180"
Available Styles: Roman, Roller, Top Treatment

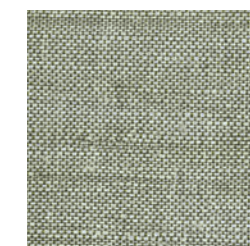
Shown: LE3130 Essence – Bisque, Roller Style
EW149-30 Mirage – Echo, By-the-Yard

COOL TONES

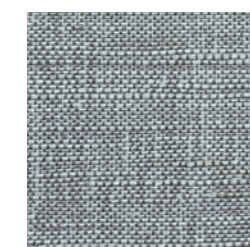
Evocative of water, cool tones induce a feeling of relaxation and calm.



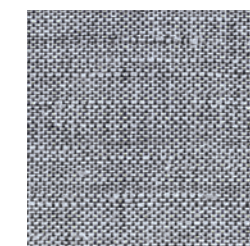
LE3030 Fescue



LE3154 Garden



LE3054 Sprig



LE3057 Denim

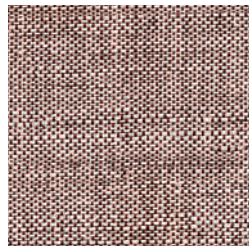
Lamp courtesy – Palecek

Price Group: 4 | Max Width: 180"
Available Styles: Roman, Roller, Top Treatment

Shown: LE3054 Essence – Sprig, Old Style Roman
G03 9000 – Snow, Rollershade with TBC55 Chevron – Sprig, Handwoven Border Trim



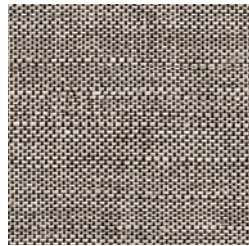
LE3051 Sunray



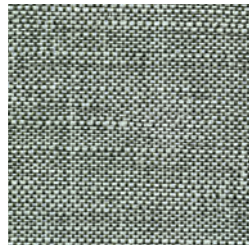
LE3072 Terra

JEWEL TONES

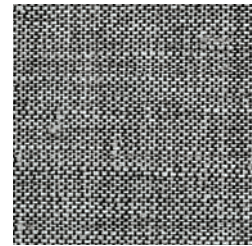
Inspired by gemstones, jewel tones have a high level of color saturation that adds a luxurious dynamic to any interior.



LE3066 Pinecone



LE3078 Meadow



LE3087 Onyx





WOVEN-TO-SIZE

GRASSWEAVE ORIGINS

A DESIGN INDUSTRY CLASSIC

Drawing insight from the past to carry tradition forward, this collection of classic evenly-spaced warp designs made of palm, bamboo husk, and other exotic fibers, delivers beautiful light-play as sun rays gently filter through the open grass weaves.



HAVEN

Ramie, prized for its beauty and softness, is in full effect in this wondrously airy weave, offered in a delicately neutral palette of warm white and golden straw.



LE1200 Canera



LE1207 Tiaki



Price Group: 4 | Max Width: 180"
Available Styles: Roman, Top Treatment

Shown: LE1200 Haven – Canera, Old Style Roman

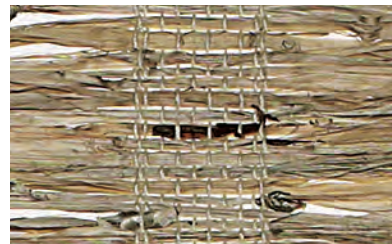


HERITAGE

An update on a traditional grassweave design, the subtle sheen and dressy softness of arrowroot provides a seductive allure.



LE1300 Cire



LE1305 Atlas



LE1860 Armure



VINTAGE

A relaxed timeless grassweave pattern that blends effortlessly with contemporary and traditional interiors alike. The matte finish demonstrates a natural and organic nature.



LE1803 Parchment



LE1150 Leno



LE1151 Chamois



LE1154 Crentone



Furnishings courtesy - Palecek



INTERLACE

Soliciting an interplay between light and fiber, this innovative warp-yarn structure and gauze-like ramie fibers candle incidental light in a graceful dramatic dance.



LE3209 Tawny



LE3215 Ember

Price Group: 4 | Max Width: 180"
Available Styles: Roman

Shown: LE3209 Interlace - Tawny, Old Style Roman

TRESTLE

Lending a contemporary charm to any room, this weave captures attention with memorable stripes woven in tone-on-tone arrowroot.



LE1336 Samet



LE1310 Railay





WOVEN-TO-SIZE

PAPYRUSWEAVE

MOMENTS OF MINDFUL ZEN

An unassuming, refined elegance defines this modern collection of hand-loomed wood-pulp fibers.

Designed in textural patterns with soft tonal hues that invite a serene and tranquil mood to interiors.

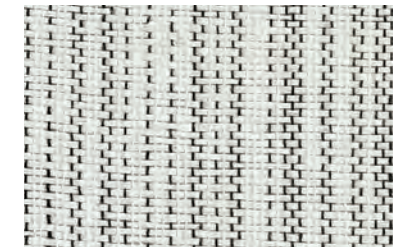


Console courtesy – Tiffany Home Design

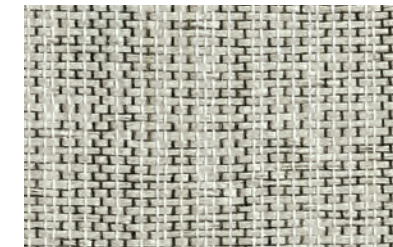
NEW

REFLECTION

Lightweight papyrus produces a rich textural backdrop for refined threading in this soothing series. Reimagining classic designs, the rhythmic black-and-white warp forms an open, irregular stripe pattern bordered by a distinctive finished edge that frames the design.



PE609-87 Meditative Black



PE609-36 Insightful Grey



Price Group: 3 | Max Width: 150"
Available Styles: Roman, Roller, Top Treatment

Shown: PE609-87 Reflection – Meditative Black, Old Style Roman

UNITY

Loomed of gently twisted strands of papyrus, Unity's sumptuously soft texture is balanced by a double warp that delivers definition to the relaxed weave. The series features a diaphanous design that allows light to pass through, its airy look and peaceful color palette lending a Zen sensibility.



PE608-03 Peaceful Dove



PE608-09 Common Ground



PE608-36 Gracious Grey

Price Group: 3 | Max Width: 150"
Available Styles: Roman, Roller, Top Treatment

Shown: PE608-03 Unity – Peaceful Dove, Old Style Roman
WL425-18 Beachfront – Bandon, Wallcovering





Table courtesy - Ferrell Mittman



PE606-03 Heavenly White

AWARENESS

With a simple and understated elegance, this design connotes a rustic simplicity and stillness.



PE606-06 Thoughtful Ivory



PE607-09 Imbued Sand



PE606-09 Conscious Beige



PE606-36 Poised Grey



PE607-60 Composed Grey



PE606-60 Dignified Grey

Price Group: 3 | Max Width: 150"
Available Styles: Roman, Roller, Top Treatment

Shown: PE607-09 Awareness - Imbued Sand, Panelscreen
WL424-06 Baja - Coral Sands, Wallcovering



PE600-03 Pure White



PE600-06 Sacred Desert



PE600-09 Serene Sand



PE600-30 Wise Sage



PE600-36 Placid Grey



PE600-60 Steady Graphite

CLARITY

This linen-like weave lends quiet sophistication to a room with its exquisite refinement. Invitingly soft and supple, it comes in an elegant spectrum of hushed neutrals from Pure White to Steady Graphite.



Price Group: 2 | Max Width: 150"
Available Styles: Roman, Roller, Top Treatment

Shown: PE600-03 Clarity - Pure White, Roller Style
U06 8000 - Ivory, Rollershade

BALANCE

A lightweight weave that effortlessly blends a chalky-white ground with tones of soft cream, grey or green, resulting in a heathered look that is gentle and approachable.



PE601-06 Soothing White



PE601-30 Gentle Green



PE601-36 Soft Grey

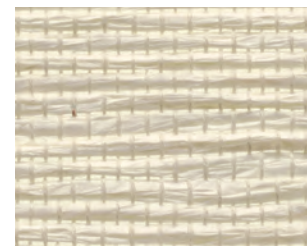
Price Group: 2 | Max Width: 150"
Available Styles: Roman, Roller, Top Treatment





HARMONY

This captivating design attracts considerable attention with its unique variegated pattern. Pulp fibers, in harmonious hues, are woven together to create a medium-weight shading option that lends character and contrast to a room.



PE602-03 Divine White



PE602-09 Blended Raffia



PE602-42 Infused Bark



PE602-51 Healing Agate



PE602-60 Diverse Grey



PE602-63 Noble Slate

Price Group: 3 | Max Width: 150"
Available Styles: Roman, Roller, Top Treatment

Shown: PE602-42 Harmony – Infused Bark, Old Style Roman

ENLIGHTENMENT

Lightweight and loosely structured, this weave filters sunlight without obscuring outside views. Delicate mottling makes the sun-bleached palette even more intriguing.



PE604-03 Inspired White



PE604-30 Peaceful Green



PE604-06 Restful Ivory



PE604-36 Contented Grey



PE604-09 Relaxed Sand



PE604-60 Vibrant Grey



Price Group: 2 | Max Width: 150"
Available Styles: Roman, Roller, Top Treatment

Shown: PE604-36 Enlightenment – Contented Grey, Roller Style
WL417-60 Peninsula – Haze, Wallcovering



TRANQUILITY

Reminiscent of Japanese screens, this open framework of line and space is created using two different colored pulp weft fibers in combination with stylized warp threading. The artistry of the weave and color selection reflects an understated, modern sensibility.



PE605-03 Cozy White



PE605-36 Passive Grey



PE605-30 Easy Green



PE605-09 Quiet Beige



PE605-60 Cool Grey

Price Group: 2 | Max Width: 150"
Available Styles: Roman, Roller, Top Treatment

Shown: PE605-60 Tranquility – Cool Grey, Roller Style

SERENITY

A design traditionally woven in grass fibers, this textural weave is thoughtfully updated in contemporary pulp fiber with a striking 3.5" warp. Its airy woven fibers and earthy color palette set a contemplative mood.



PE603-03 Calm White



PE603-06 Mindful Ivory



PE603-09 Creative Sand



PE603-30 Mellow Green



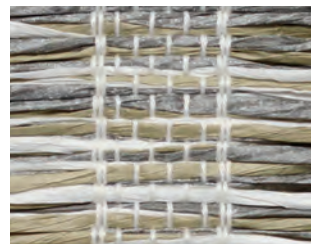
PE603-36 Sulky Grey



PE603-60 Tranquil Grey



PE603-21 Blissful Bark



PE603-63 Warm Slate



PE603-15 Kind Grey

Price Group: 2 | Max Width: 150"
Available Styles: Roman, Top Treatment

Shown: PE603-30 Serenity – Mellow Green, Old Style Roman
EW109-12 Cords – Burlap, By-the-Yard



SERENITY II

Offering the same color and texture as the Serenity 3.5" warp, this 5" warp is a timeless design, allowing the fiber to drape in a soft scalloped pattern.



PE603-03w Calm White



PE603-06w Mindful Ivory



PE603-09w Creative Sand



PE603-30w Mellow Green



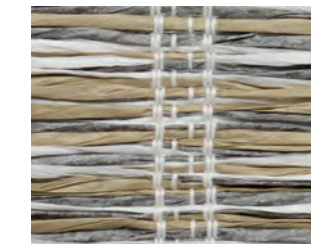
PE603-36w Sulky Grey



PE603-60w Tranquil Grey



PE603-21w Blissful Bark



PE603-63w Warm Slate



PE603-15w Kind Grey

Price Group: 2 | Max Width: 150"
Available Styles: Roman, Top Treatment



IN-STOCK

[TTS]

TAILORED-TO-SIZE

To accommodate shorter lead times, we handweave our natural fibers into roll goods which are inventoried in our Oregon finishing facility. Here, artisans tailor the weave to the specified window size and hand finish the edges — again, crafting each shade on a one-of-one basis.

COLLECTIONS

GRASSWEAVE [TTS]

PAPYRUSWEAVE [TTS]

COLOURWEAVE [TTS]



TAILORED-TO-SIZE

GRASSWEAVE

LEGACY FIBERS AND TEXTURES

This timeless, textured collection tailored of legacy natural fibers has a relaxed and comfortable charm.

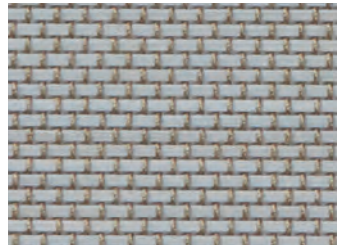
Classic jute, bamboo, river reed and sea grass are woven in a broad range of designs, from Japanese Miyabi inspired refinement to bold and chunky.

LINEN

Crisp, minimal and delightfully modern, this series has the natural approachability of linen fabric. Offered in a color palette that complements a wide range of interior color schemes.



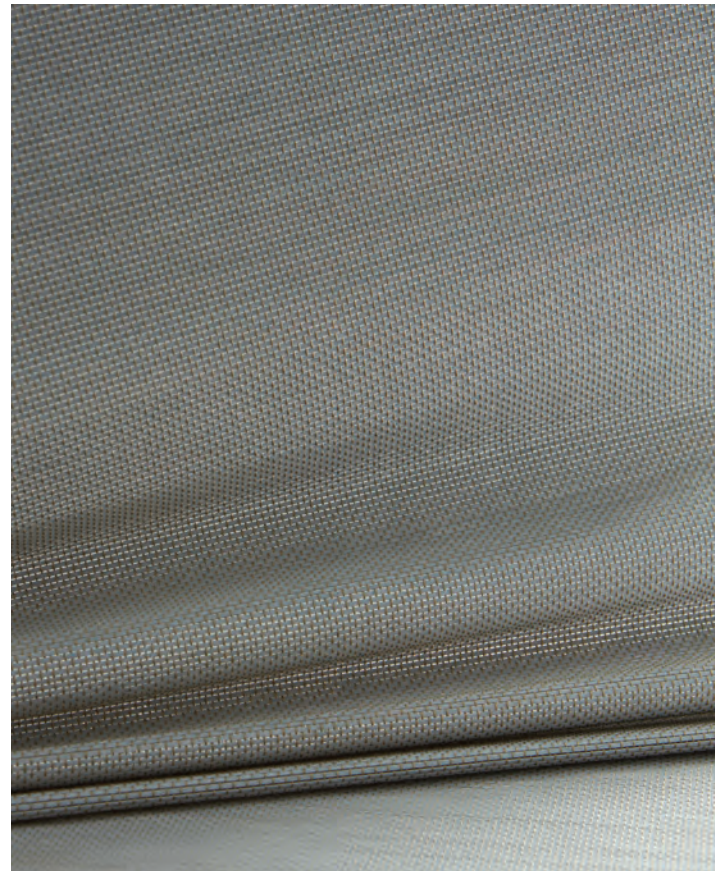
No.91w Winter Linen



No.91m Morning Linen



No.91d Dusk Linen



Price Group: 2 | Max Seamless Width: 96"
Available Styles: Roman, Top Treatment

Shown: No.91w Linen – Winter Linen, Old Style Roman

ESSENTIA

Woven jute fibers distilled to their essential beauty, this lightweight textile is available in a range of delicately heathered earth tones.



KW110 Asa



KW118 Ishi



KW116 Ame



KW112 Kumo



BLOSSOM

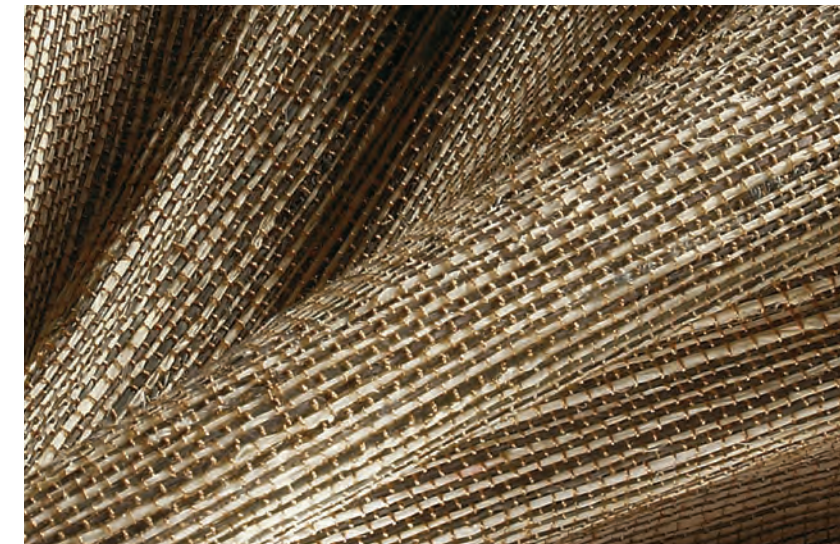
A micro-fine jute textile offered in two neutral colorways to complement an array of interior styles.



KW95 Lotus Blossom



KW92 Pacific Basin





BASIN

Elegant and finely tailored, this weave offers quiet serenity and soothing tones of sandstone, dappled grey and cocoa brown.



No.93 Yangtze Basin



No.92 Mu Basin



No.95 Saru Basin



No.90 Kanto Basin

Price Group: 2 | Max Seamless Width: 96"
Available Styles: Roman, Top Treatment

Shown: No.90 Basin – Kanto Basin, Old Style Roman with Valance
EW144b Sheer Stripe – Balem, By-the-Yard



PRAIRIE

A prairie landscape of light and dark shading is translated into a jute weave interspersed with wild river reeds.



No.13n Natural Prairie
Max Width: 96"



No.13s Shadow Prairie
Max Width: 96"



No.25r Bamboo Rustic w/Reed

BAMBOO

A unique and differentiated bamboo design that displays creative panache with a combination of flat and rounded fibers woven with a double warp pattern.

TAKI

Sustainably cultivated premium bamboo strips are hand laid and woven in a minimalistic pattern offering privacy with style.



No.31r Taki Rustic



No.31 Taki Caramel



Price Group: 1 | Max Width: 96," 120"
Available Styles: Roman, Top Treatment

Shown: No.31n Prairie – Natural Prairie, Old Style Roman

Price Group: 1 | Max Width: 96"
Available Styles: Roman, Top Treatment

Shown: No.31 Taki – Taki Caramel, Old Style Roman with Edge Binding



TAILORED-TO-SIZE

PAPYRUSWEAVE

A WELL-TRAVELLED COLLECTION

A collection of wood-pulp fiber designs, celebrating legendary techniques found in global weaving communities. Influenced by Asian silks, Navajo weaves, European tapestries, Ottoman rugs and other weaving heritages.



ZEN

Zen philosophy suggests uncluttered simplicity will stimulate tranquility. The Zen series adorns this philosophy with its refinement.



PW50 Snow Lantern



PW153 Rake Sand



PW156 Stone Temple



PW52 Stepping Stone



PW154 Rock Garden



Price Group: 1 | Max Seamless Width: 72"
Available Styles: Roman, Roller, Top Treatment

Shown: PW50 Zen – Snow Lantern, Old Style Roman

WOOLEN MILL

The value of woven wool blankets dates back to the earliest expeditions across the American West. Inspired by this legacy, the Woolen Mill series offers a superior balance of rustic textures and natural colors.



PW157-06 Ecu



PW157-33 Sky



PW157-09 Buff



PW157-36 Heathered



PW157-66 Bruine



Price Group: 2 | Max Seamless Width: 72"
Available Styles: Roman, Roller, Top Treatment

Shown: PW157-09 Woolen Mill - Buff, Traditional Style Roman

ARMENIA

Inspired by the cultural transformation of the Persian empire, the Armenia series plays with the drama of light and dark pulp fibers to influence the mood of a room.



PW101s Sumac



PW101c Cattail



PW101t Thistle

BASKETRY

Ranging from highly functional to artistic masterpieces, basket weaving is an art form that spans cultures around the world. The Basketry series draws on this functional expression with five wide-warp designs in a neutral palette.



PW158-03 Blanched



PW158-09 Fawn



PW158-36 Dusty



PW158-66 Cocoa

SILK ROAD

When Chinese silk was first discovered, it became a treasured commodity that merchants would travel far and wide selling to wealthy rulers and nobility. The Silk Road series emulates these rich textures valued across the historic trade route.



PW10w Pearl Silk



PW10b Antique Silk



PW10p Porcelain Silk

Price Group: 1 | Max Seamless Width: 72"
Available Styles: Roman, Roller, Top Treatment

PHARAOH

As early as 4000 BC, ancient Egyptians would pound and weave papyrus plant fibers to create paper. The Pharaoh series pays tribute to the ancient craftsmen who created the pulp fiber to record the legacies of the wealthy.



PW94w Cotton



PW94g Ibis



Price Group: 2 | Max Seamless Width: 96"
Available Styles: Roman, Top Treatment

Shown: PW94g Pharaoh – Ibis, Old Style Roman

HIMALAYA

Himalayan artisans have been crafting woven rugs since the first Buddhist temples were built in the early Gupta period (4th century AD). Buddhist monks used natural fibers and natural dyes to create simple yet spiritual designs, similar to that of the Himalaya series.



PW89e Everest



PW89L Lhotse



PW89a Annapurna

Price Group: 2 | Max Seamless Width: 72"
Available Styles: Roman, Top Treatment

Shown: PW89a Himalaya – Annapurna, Old Style Roman



TAILORED-TO-SIZE

COLOURWEAVE

AN ART-INFUSED PORTFOLIO OF WEAVES

A palette of designs woven of the inside peel of sustainably-grown bamboo. Custom-painted or stained-to-order by local artisans in modern and traditional matchstick patterns. Available in standard or custom colors.



MODERN

A handcrafted double warp updates this traditional weave to a clean contemporary aesthetic. Woven with sustainably sourced bamboo, this design makes a crisp architectural statement.



CW70d Frost



CW29d Quartz



CW09d Sand Dollar



CW71d Sand Dune



CW72d Stone



CW36d Park Avenue

Price Group: 2 | Max Width: 120"
Available Styles: Roman, Top Treatment

Shown: Modern CW72d Stone, Old Style Roman with Edge Binding

CUSTOM COLOURS

Custom painted to order in modern and traditional matchstick patterns to match a room's colors, furnishings or cabinetry.

Shown: Modern Colourweave in Grassweave Essence color match

PAINTS



CW70 Frost

PG2



CW29 Quartz

PG2



CW09 Sand Dollar

PG2



CW71 Sand Dune

PG2



CW72 Stone

PG2



CW36 Park Avenue

PG2

CLASSIC

An interior design classic, bamboo shades gently filter sunlight with low-key natural beauty. This design features slender-grained bamboo reeds in painted tones.

STAINS



CW45 Bolivian Maple

PG1



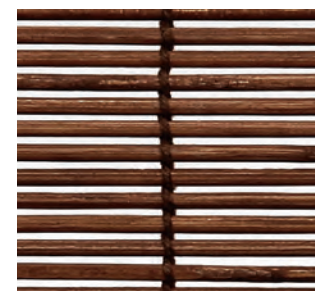
CW46 Peruvian Walnut

PG1



CW47 Brazilian Teak

PG1



CW48 Chilean Cherry

PG1





WOODLAND

An exquisite layer, Woodland pairs beautifully or can anchor a window setting to create an instant refuge of relaxation. Colorways stained in warm hues of rustic timbers and woody bark.



CW49 Minkwood

Max Width: 96"



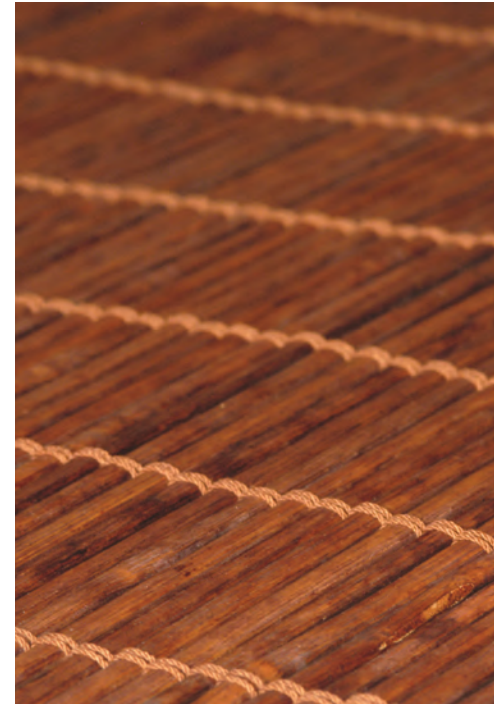
CW50 Brickwood

Max Width: 120"



CW51 Bark

Max Width: 96"



Price Group: 1 | Max Width: 96", 120"
Available Styles: Roman, Top Treatment

Shown: CW50 Brickwood, Old Style Roman



SOFT NATURAL FABRIC

A fresh translation of textural classics, our Soft Natural Fabric collection offers hints of the exotic while remaining grounded in the modern moment. Loomed in some of the world's oldest and most revered textile mills, fibers are carefully spun and dyed to a rich and earthy color palette.

ERTHEWEAVE

 **MASTERS
OF
LINEN®**
100% MADE IN EUROPE



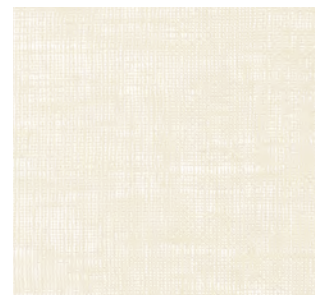
NEW

BRUSHED

A soft textured sheer linen milled in the Belgium countryside. Offered in a palette of neutrals to work harmoniously in the home and to coordinate with our natural woven shades.



EW151-03 Amaryllis



EW151-06 Lily



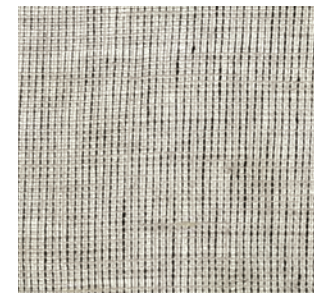
EW151-09 Foxtail



EW151-15 Silverdust



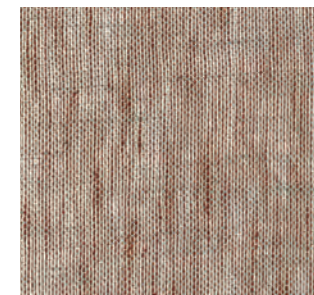
EW151-27 Millet



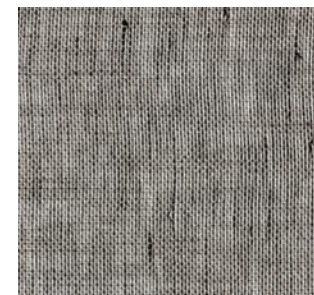
EW151-36 Thistle



EW151-39 Seaholly



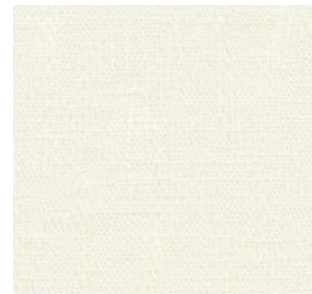
EW151-45 Allspice



EW151-87 Hollyhock

SAHARA

Resembling windblown desert sands, this luxury linen exhibits a delicate rippling of soft color favoring the natural beauty of the desert. (shown railroaded)



EW150-03 Salt



EW150-06 Dune



EW150-09 Sandwash



EW150-12 Plateau



EW150-57 Oasis



EW150-72 Sundown



Price Group: 4 | Max Seamless Width: 114"
Available Styles: Roman, Top Treatment

Shown: EW150-12 Sahara – Plateau, Flat Style Roman
WL424-03 Baja – White Sands, Wallcovering



MIRAGE

Heat reflecting from the barren desert floor delivers playful light refraction. The organic pattern of the Mirage Series captures this seemingly random effect.



EW149-03 Glint



EW149-09 Glow



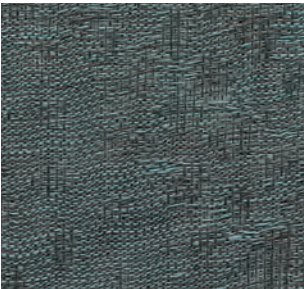
EW149-12 Luminous



EW149-30 Echo



EW149-36 Illusion



EW149-79 Phantom

Price Group: 4 | Max Seamless Width: 114"
Available Styles: Roman, Top Treatment

Shown: EW149-30 Mirage – Echo, By-the-Yard
LE3130 Essence – Bisque, Rollerfold Style
WL424-12 Baja – Desert Sands, Wallcovering

Table courtesy – ©Wara Studio



WEATHERED

The natural stone-washed palette of this soft, medium-weight linen delivers an easygoing attitude embodying a lived-in, carefree lifestyle.



EW104-12 Limestone



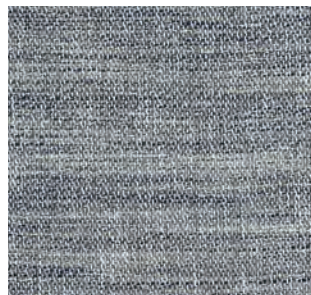
EW104-18 Sandstone



EW104-30 Greenstone **NEW**



EW104-32 Moonstone



EW104-57 Bluestone **NEW**



EW104-60 Graystone

Price Group: 4 | Max Seamless Width: 55"
Available Styles: Roman, Top Treatment

Shown: EW104-18 Weathered – Sandstone, By-the-Yard
LE1057 Interwoven – Seychelles, Old Style Roman





FIELDS

A perfect expression of harmony in design. This linen beautifully blends two distinct textures into one evocative pattern. Gentle earth tones and visual texture from vertical warp fibers evoke images of undulating flax fields at harvest.



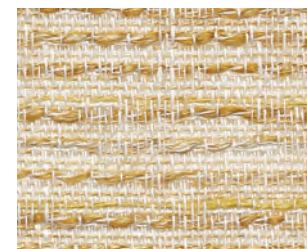
EW148-06 Loam **NEW**



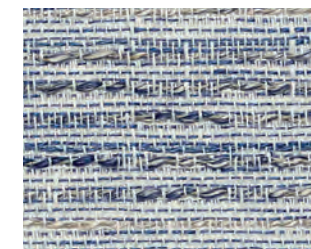
EW148-12 Earthen



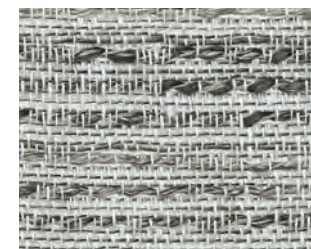
EW148-39 Root



EW148-51 Bloom



EW148-57 Petal



EW148-84 Peat

Price Group: 4 | Max Seamless Width: 114"
Available Styles: Roman, Top Treatment

Shown: EW148-51 Fields - Bloom, Flat Style Roman



RIBBED

With a raised pinstripe pattern, this sheer linen brings casual chic to an interior. The multi-color thread detail offers a dynamic and differentiated look.



EW105-06 Buff

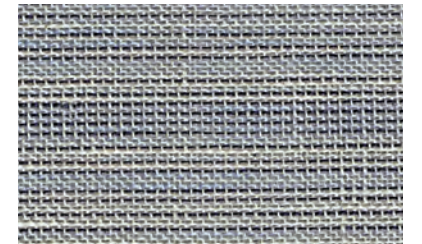


EW105-60 Denim



STRIE

An inspired melange of linen threads are loomed into an elegant heathered weave. This sheer linen has a chic quality that elevates the style of a room.



EW147 Lagoa
Max Seamless Width: 55"

PG4



EW141a Andari
Max Seamless Width: 50"

PG3



EW141t Tijura
Max Seamless Width: 50"

PG3

Price Group: 4 | Max Seamless Width: 114"
Available Styles: Roman, Top Treatment

Shown: EW105-06 Ribbed – Buff, By-the-Yard

Price Group (PG): 3, 4 | Max Seamless Width: 50," 55"
Available Styles: Roman, Top Treatment



CORDS

Elegance with a rustic twist, this design features tufted cords artistically embroidered onto a heavy linen ground. As wearable as fashion, this contemporary textile will dress any window in chic style.



EW109-06 Cotton



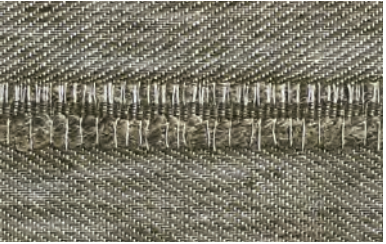
EW109-12 Burlap



EW109-15 Canvas **NEW**



EW109-21 Cloth **NEW**



EW109-54 Knapsack **NEW**

Price Group: 4 | Max Seamless Width: 114"
Available Styles: Roman, Top Treatment

Shown: EW109-15 Cords – Canvas, Flat Style Roman

Furnishings courtesy – Tiffany Home Design | Rug courtesy – Tutenkian Artisan Carpets

SHEER STRIPE

An open-weave striping adds visual interest in this sophisticated sheer linen. Offered in a contemporary neutral palette with tonal heathering.



EW144b Balem



EW144n Natal



EW144o Ounda



EW144r Recliffe



PLAID

A traditional windowpane check pattern is masterfully adapted in a striking linen weave. A heavy, coarse thread woven in the weft, gives this fabric tactile interest and contemporary character.



EW145s Sao' Luis



EW145m Marceio



ARBORETUM

With an elegant, vintage feel, this sheer design layers a charming abstract leaf motif on a warm cream backdrop.



EW108-21 Bask



EW108-60 Shade

Price Group: 5 | Max Seamless Width: 114"
Available Styles: Roman, Top Treatment

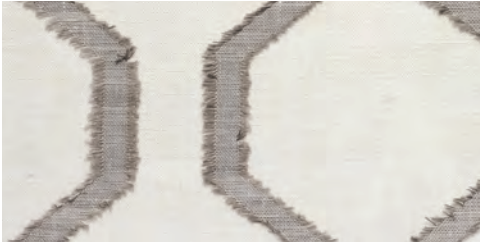
Shown: EW108-60 Arboretum – Shade, By-the-Yard, Pillow
EW104-60 Weathered – Graystone, Flat Style Roman

GEOMETRY

A breezy lightweight linen that captures a modern geometric vibe. Offered in misty neutrals and blue, this hypnotic pattern of abstract ogees comes together to make a big impact.



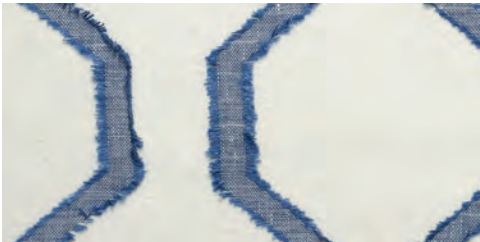
EW257 Angulo



EW256 Praca



EW259 Contorno



EW258 Moldar

Price Group: 5 | Max Seamless Width: 53"
Available Styles: Roman, Top Treatment

Shown: EW259 Geometry – Contorno, By-the-Yard
LE1124 Driftwood – Togo, Old Style Roman
WL364 Santa Lucia – Cypress, Wallcovering



PERFORMANCE FABRIC

A collection of designs using man-made fibers woven to achieve peak performance characteristics including heat and glare reduction, UV filtration and privacy. These fabrics are durable, meet or exceed commercial fire standards and are virtually maintenance-free.

ECOWEAVE
PRIVACY
SOLARSCREEN

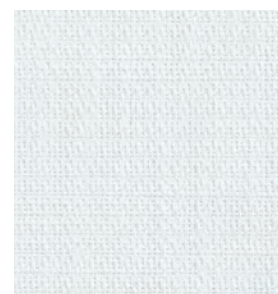


NEW
ECOWEAVE GREEN PERFORMANCE

An eco-friendly, low-impact solution. Greenguard certified. PVC-free. Tightly woven, with a tailored feel, in soft, natural hues that nicely complement our natural woven collections.

TRANSLUCENT
ECO 100
3% OPENNESS

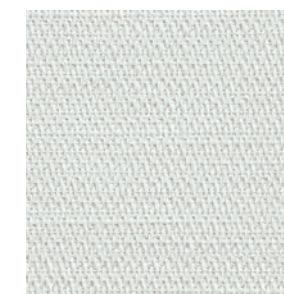
BLACKOUT
ECO 200



EC100-03 Agate



EC100-06 Calcite



EC200-03 Agate



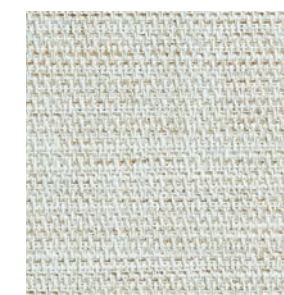
EC200-06 Calcite



EC100-09 Epidote



EC100-12 Gneiss



EC200-09 Epidote



EC200-12 Gneiss



EC100-15 Quartzite



EC100-60 Pyrite



EC200-15 Quartzite



EC200-60 Pyrite

PRIVACY FABRIC DESIGNED PERFORMANCE

A broad collection of decorative fabrics with the look and feel of rich cloth in a soothing range of colors. Sheers to gently filter light, Translucent to dial the sun down, and Blackout to block the sun.

TRANSLUCENT

8000
5% OPENNESS



A refined texture displays a soft contemporary design which coordinates beautifully with our natural textiles.



TRANSLUCENT SHEER

This sheer privacy fabric provides ease of handling and care. With a linen-like texture, it softly filters light, while providing a natural look.



PFSH01 Soft White



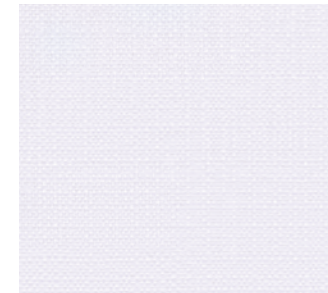
PFSH02 Linen



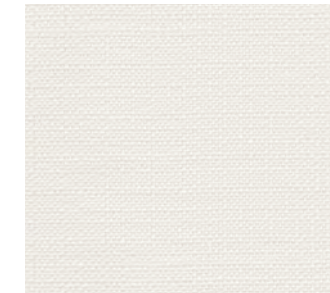
PFSH03 Khaki



PFSH06 Asher



U03 White



U06 Ivory



U27 Shell



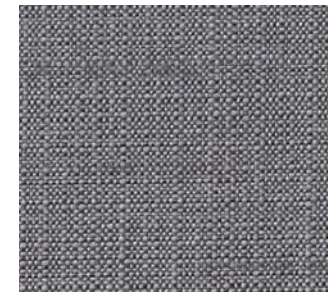
U36 Dove Grey



U18 Khaki



U12 Taupe



U60 Thunder



U66 Coffee



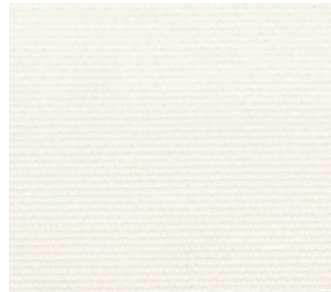
U87 Lava

BLACKOUT
7000

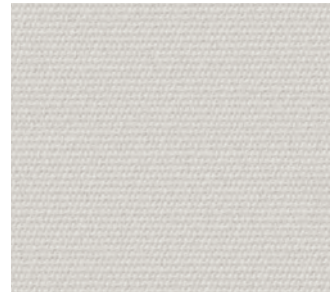
A uniquely designed Blackout fabric that provides light blockage when room darkening is needed. With a range of decorative colors, the 7000 series has the look and feel of rich cloth with a PVC-free composition.



P62 White



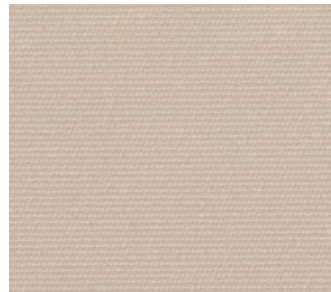
P63 Birch



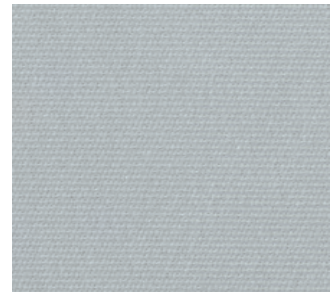
P18 Sandy



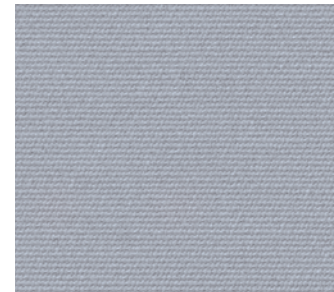
Q57 Wheat



Q09 Tan



Q36 Light Grey



Q39 Pebble



Q58 Mushroom



V39 Graphite



Q87 Black

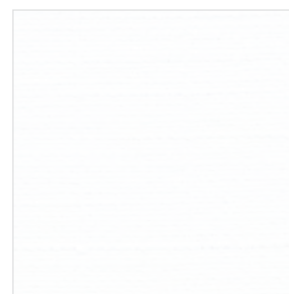


Price Group: 2 | Max Seamless Width: 118"
Available Styles: Roller, Top Treatment



BLACKOUT 9000

A modern textured design that offers light blockage when room darkening is needed. PVC free, the 9000 series inherently blocks heat loss and reduces UV transmission.



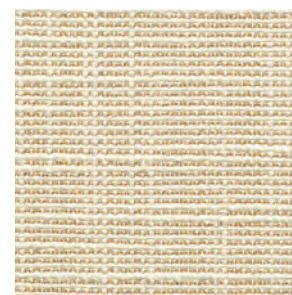
G00 Bright White



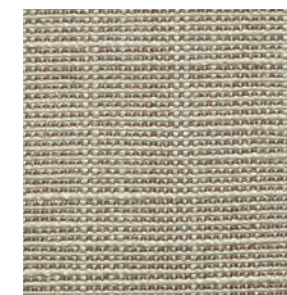
G03 Snow



G06 Natural



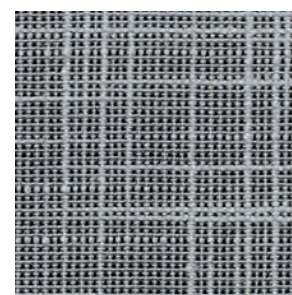
G09 Wheat



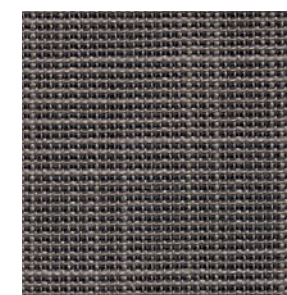
G15 Smoke



G36 Greige



G60 Granite



G63 Charcoal



Price Group: 3 | Max Seamless Width: 118"
Available Styles: Roller, Top Treatment

Shown: G36 9000 – Greige, Rollershade

SOLARSCREEN DURABLE PERFORMANCE

Blending vinyl-coated fiberglass and polyester yarns with the latest in green PVC technology, Solarscreen lets you balance outward visibility and shade with just the right degree of openness.

TRANSLUCENT

4000

5% OPENNESS

This woven design combines the durability of vinyl coated polyester with the latest in green PVC technology.

TRANSLUCENT

3000

14% OPENNESS

Combining vinyl coated fiberglass and polyester yarns, the 3000 series is woven into a rib design for a distinct look and color palette. The 14% openness lets in more natural light while providing outward visibility.



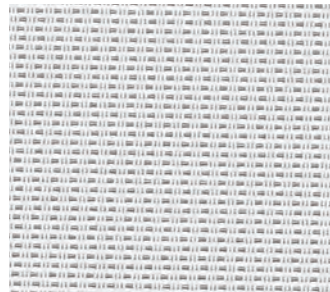
P01 Pearl White



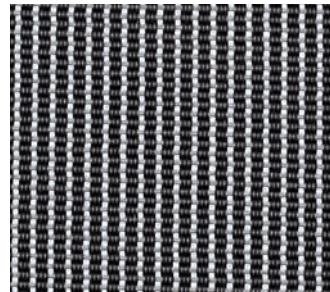
Q17 Sand Dollar



Q01 Mushroom Sand



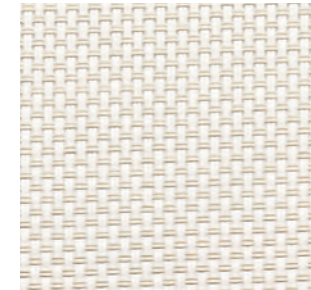
V01 Pale Grey



V02 Ninja Grey



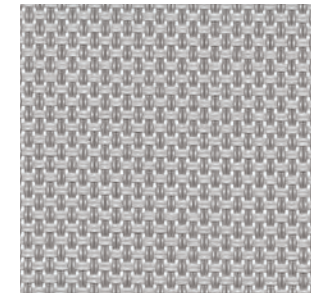
P06 Chalk



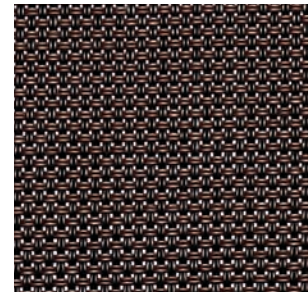
P07 Alabaster



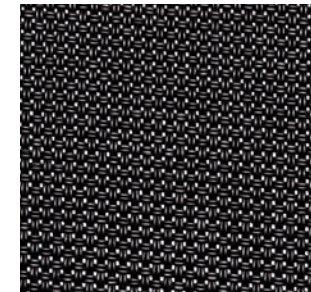
Q12 Pebblestone



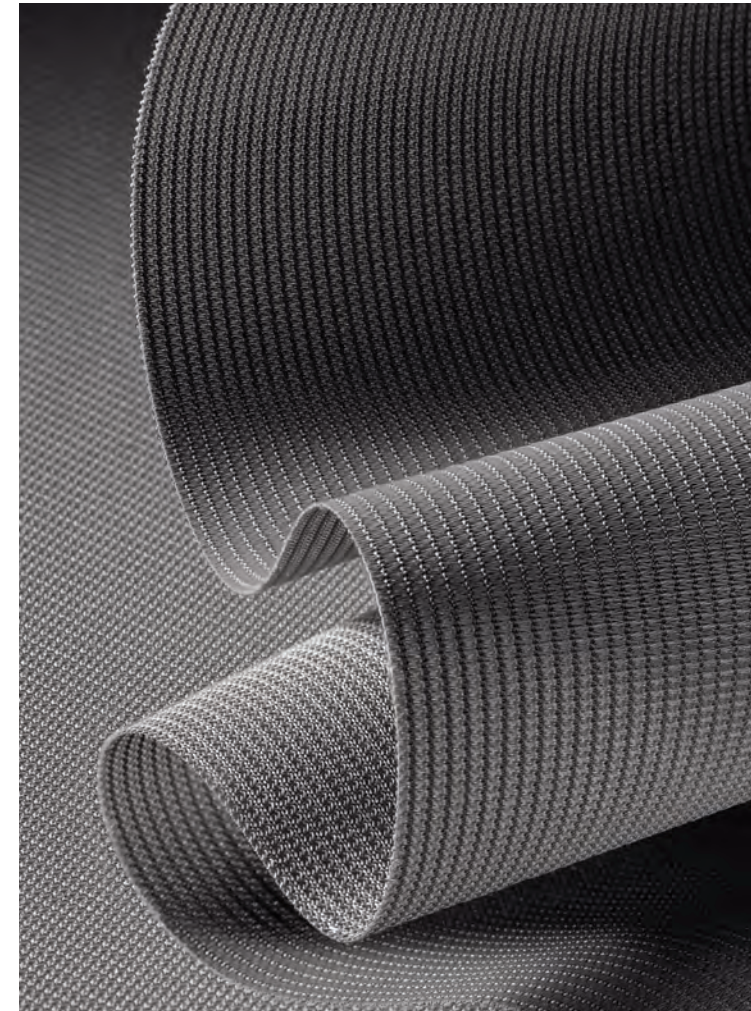
V07 Pewter



Q16 Tobacco



V10 Ebony





TRANSLUCENT

5000

3-10% OPENNESS

This jacquard fabric design combines rich, textured yarns with traditional patterns in natural rich earth tones. Woven from vinyl coated polyester and uncoated polyester yarns, these fabrics are as durable as they are beautiful.



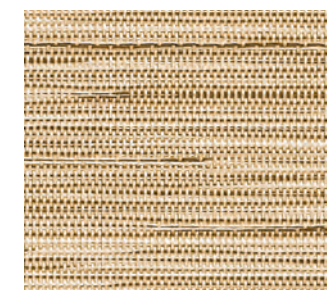
SW5060 Matsutake
Openness: 10%



SW5089 Enoki
Openness: 3%



SW5046 Morrell
Openness: 7%



SW5012 Beech NEW
Openness: 5%



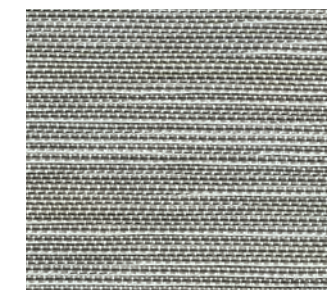
SW5091 Parasol NEW
Openness: 3%



SW5092 Porcini
Openness: 5%



SW5062 Bolete NEW
Openness: 5%



SW5066 Sarcodon NEW
Openness: 5%

Price Group: 3 | Max Seamless Width: 98"
Available Styles: Roller, Top Treatment

Shown: SW5092 5000 - Porcini, Rollershade



NATURAL WALLCOVERING

WE SEE WALLS AS WINDOWS, TOO.

The presence of light and shade on a wall should always enhance your natural surroundings. Our collection of authentic grasscloth surface materials is created from rapidly-renewable fibers such as abaca, sisal, ramie and jute. Each textile is woven and finished by hand before being carefully backed and trimmed.

Here you'll find sanctuary, and inspiration wall-to-wall. From the warm, herbal tones of wine country to traditional Southern geometry, each design reflects a distinctly American personality.

An all-embracing way to feel even more at home.

GRASSCLOTH
PAPER WEAVE
SPECIALTY

BAJA

Resembling the majestic sandy coastlines in the summertime, the Baja Series radiates with a warm and inviting pale, sandy-patina unique to natural fibers such as mother of pearl, raffia and waterlily.



WL424-06 Coral Sands



WL424-03 White Sands



WL424-12 Desert Sands



WL424-12 Baja - Desert Sands, Wallcovering



WL424-03 Baja - White Sands, Wallcovering
EW150-12 Sahara - Plateau, Flat Style Roman



WL424-06 Baja - Coral Sands, Wallcovering



WL414-03 Seaboard - Cape, Wallcovering



WL414-36 Seaboard - Pier, Wallcovering



WL414-12 Seaboard - Landing, Wallcovering
LE2121 Mesa - Adobe, Traditional Style Roman

SEABOARD

Inspired by that fleeting moment when the sea mist-covered boardwalk mirrors the sunset, Seaboard reflects this elegantly subtle shimmer in unique designs using fibers of abaca and hand-stripped water lilies.



WL414-03 Cape



WL414-12 Landing



WL414-36 Pier



RIVERFRONT

Resembling reflective waters of a river winding through a city, the Riverfront series is highlighted by golden metallic threads interwoven within soft white and silver abaca.



WL415-03 Sail



WL415-36 Mooring

HARBOR

Sailboat-dotted inlets and ocean sunbeams inspired this eye-catching design. Hearty bac bac fiber is hand-stripped, handwoven, backed with colored paper, then washed with white or metallic pigments. This artisanal process creates a dimensional wallcovering of extraordinary character.



WL420-21 Nantucket



WL420-42 Rockport



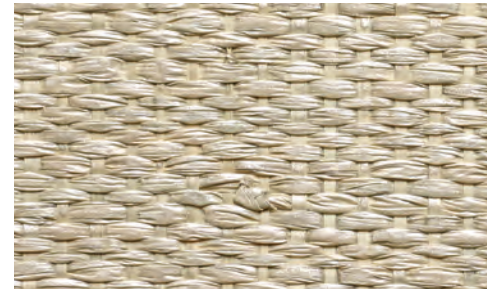
WL420-45 San Juan



WL420-51 Catalina

ISLAND COAST

Elemental marine hues wash over this classic handwoven raffia weave with clear lacquer finish for subtle sheen. A contemporary classic that invites the outdoors in.



WL418-06 Shell



WL418-33 Sea Mist



WL418-15 Pebble



WL418-42 Tortoise

Width: 36" (91.4cm) | Length: 8yds (7.3m)

Shown: WL418-33 Island Coast – Sea Mist, Wallcovering



PENINSULA

Mineral browns and seafoam greens swirl and eddy in energetic motion over handwoven raffia with exposed micro knots. A pearlized glaze adds subtle glimmer to the weave and lends instant radiance to a space.



WL417-15 Sea Foam



WL417-33 Sea Break



WL417-45 Beach



WL417-60 Haze

Width: 36" (91.4cm) | Length: 8yds (7.3m)

Shown: WL417-60 Peninsula – Haze, Wallcovering



BEACHFRONT

At once relaxed and refined, Beachfront captures its namesake coastal feel. Artisan-loomed of textural raffia, its hand-painted fibers reveal variable brushstrokes for a laidback look. The colorized warp combined with whitewashed weft fibers in an open weave creates a dimensional, sun-dappled appearance.



WL425-18 Bandon



WL425-32 Seaside



WL425-36 Newport

Width: 43" (109cm) | Length: By-the-Yard

Shown: WL425-18 Beachfront – Bandon, Wallcovering
PE608-03 Unity – Peaceful Dove, Old Style Roman



SUNDANCE

The Utah Canyonland is a revered place devoted to the exploration of art, nature and cultural heritage. Constructed from tightly-woven paper fiber, the Sundance color palette is a striking combination of variegated earth tones with gold metallic overlay.



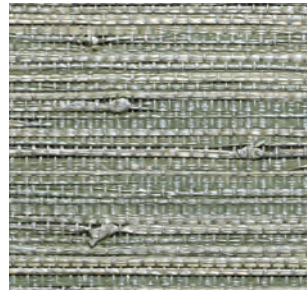
WL405 Jordanelle



WL406 Rockport



WL407 Elkhorn



WL403-65 Wasatch Peak



WL408 Deer Valley

CASCADIA

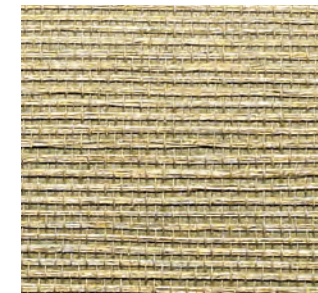
An energetic metropolis is nestled between the volcanic peaks of the Cascade Range and the shimmering waters of the Puget Sound. Fresh and dynamic, these weaves embody the beauty of the Pacific Northwest.



WL310 Rainier



WL311 Queen Anne



WL315 Pinehurst



WL313 Alki



WL314 Madrona



WL316-84 Sandpoint



SANTA LUCIA

Windswept seas and rugged shorelines are nearly palpable in the weaves of the Santa Lucia series. Each pattern gracefully infuses visions of cleansing mists, wild bluffs and coastal skies into any interior.



WL364 Cypress



WL366 Ventana

HIGH DESERT

The High Desert series combines the stark beauty of the back country with the tenderness of life that thrives there. Striated, textured and dramatic, each weave exudes the warmth and character that draws people to the desert.



WL358 Sonoran



WL353 Ridgecrest



WL354 Sweetwater



WL352 Mineral Springs



WL359 Mojave

Width: 36" (91.4cm) | Length: 8yds (7.3m)

Shown: WL359 High Desert – Mojave, Wallcovering

Width: 36" (91.4cm) | Length: 8yds (7.3m)

Shown: WL366 Santa Lucia – Ventana, Wallcovering



BIG SKY

The spectacular color display of Montana's open ranges is translated into this vigorous textural weave of jute and linen. Exposed knots and striated sagebrush colors contribute to a strong linear design.



WL419-21 Badlands



WL419-33 Bighorn

Width: 36" (91.4cm) | Length: 8yds (7.3m)

Shown: WL419-21 Big Sky - Badlands, Wallcovering
EW109-12 Cords - Burlap, Drapery



NORTH ESTATE

The hand-hewn weaves of the North Estate series provides walls with a cultivated and distinct patina reminiscent of fertile, sun-dappled valleys draped with vine-ripened fruit.



WL321 Blanc



WL323 Barrique



WL322 Chateau



WL326 Domaine

Width: 36" (91.4cm) | Length: 8yds (7.3m)

ACRE

High on a Montana plateau at the edge of a pond, sun-bleached grasses sway in the wind. Horses gather to sip the clear water. These designs draw upon the serenity of the breeze, grass and water.



WL409-15 Chaff



WL409-12 Oat



WL409-21 Hay

Width: 36" (91.4cm) | Length: 8yds (7.3m)

Shown: WL409-21 Acre – Hay, Wallcovering



TAHOE

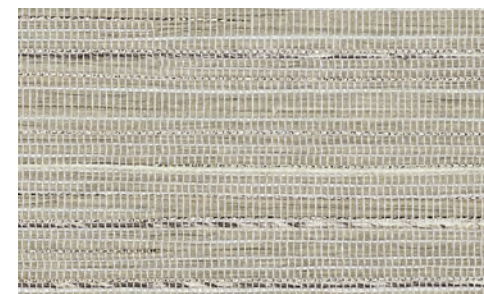
Drawing inspiration from the golden tones that ignite the lip of Lake Tahoe's snow-lined shores, this series' blended weave of gold metallic threads into a woven paper backdrop encapsulates Tahoe's stunning late winter evenings.



WL410-06 Snowdrift



WL410-21 Sundown



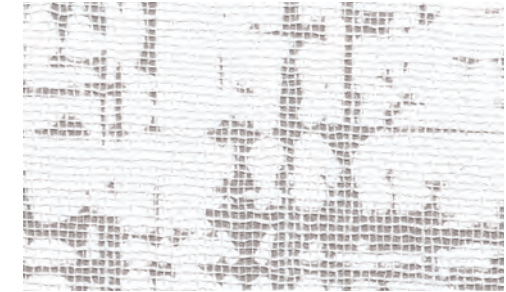
WL410-12 Icecap



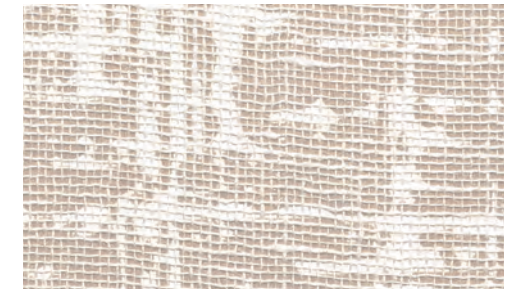
WL410-81 Starlight

Width: 36" (91.4cm) | Length: 11yds (10m)

Shown: WL410-81 Tahoe – Starlight, Wallcovering



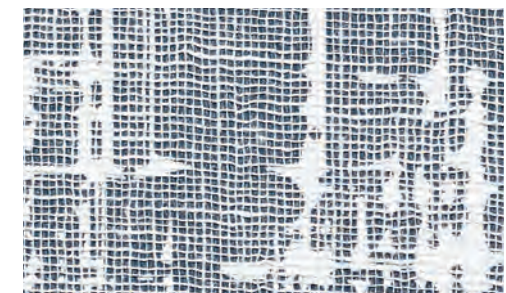
WL422-15 Boulevard



WL422-09 Walkway



WL422-60 Skyway



WL422-84 Rooftop

UPTOWN

This refined wallcovering conveys the energy of urban construction. An abstract grid design is enlarged, rotary printed, then a thin layer of linen delicately hand applied to soften the effect. The result is a seamless backdrop that adds an element of the unexpected.

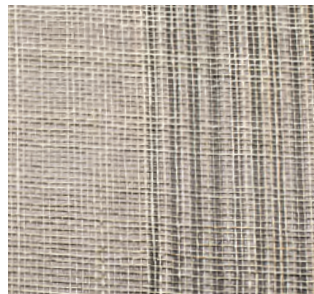
Width: 36" (91.4cm) | Length: 8yds (7.3m)

Shown: WL422-09 Uptown – Walkway, Wallcovering



DISTRICT

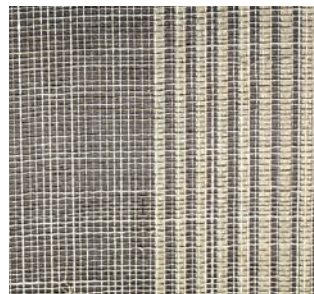
The unmistakable history of our nation's capital is reflected in the District series' warm colors and clean lines, which honor the past while celebrating today's contemporary design ideals.



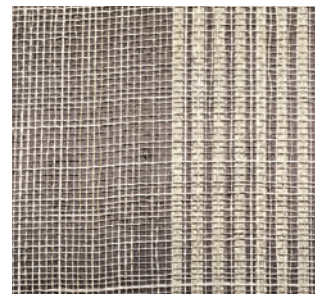
WL304 Georgetown



WL302 Dupont



WL303 Trinity



WL305 Bethesda

Width: 36" (91.4cm) | Length: 8yds (7.3m)

Shown: WL303 District - Trinity, Wallcovering

CATHEDRAL

Resembling the glossy bark of rain-soaked aspens in the Cathedral region of the Colorado mountains, this innovative design is created with hand-sliced cork skillfully placed on metallic backing paper, then printed with a design inspired by winter woodlands. This meticulous process results in a lasting impression.



WL423-03 White Gold



WL423-09 Gilded



WL423-39 Bronze



WL423-18 Copper

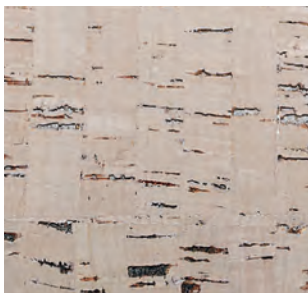
Width: 36" (91.4cm) | Length: 8yds (7.3m)

Shown: WL423-09 Cathedral - Gilded, Wallcovering



ALPINE

Hand-stripped cork reminiscent of snowcapped summits, rich pine forests and glacial meadows brings home the seldom-experienced richness of a soft-to-the-touch wilderness.



WL375 Bristlecone



WL374 Aspen



WL376 Pine



WL378 Spruce



WL381 Lincoln Park



WL382 Bucktown

LAKE SHORE

The radiant finish of the Lake Shore series is reminiscent of skyscrapers rising up from Lake Michigan in downtown Chicago. Hand-peeled cork is backed with metallic paper and hand blocked with a metallic finish.



WL383 Edgewater



Width: 36" (91.4cm) | Length: 8yds (7.3m)

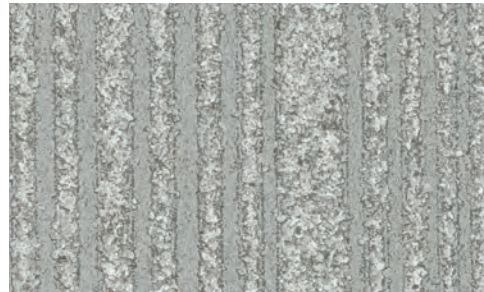
Shown: WL376 Alpine - Pine, Wallcovering

Width: 36" (91.4cm) | Length: 8yds (7.3m)



NORTHSANDS

The Northsands series features a neutral palette of vertical mica sand stripes against the subtle shimmer of a metallic backdrop. Northsands can be installed railroaded to create a horizontal stripe.



WL412-36 Sterling



WL412-03 Pearlescent

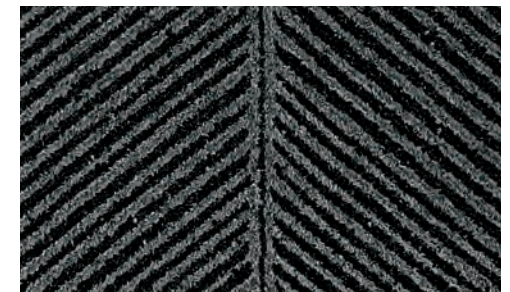


COASTLINE

Reflecting the dramatic rise and fall of the ocean tide, the Coastline series presents an oversized, herringbone-inspired mica sand pattern complemented by a dramatic metallic backdrop.



WL413-03 Clouded



WL413-84 Eclipse

Width: 36" (91.4cm) | Length: 11yds (10m)

Shown: WL412-36 Northsands – Sterling, Wallcovering

Width: 36" (91.4cm) | Length: 11yds (10m)



BY-THE-YARD TEXTILES

Our yardage programs are ideal for architects, designers, custom workrooms or automation specialists who want to use our textiles in their projects for a variety of uses. Refer to Weave Detail and Price List for available options.

TRADE SHOWROOMS

A PERSONALIZED
BOUTIQUE EXPERIENCE

For a complete showroom listing visit
hartmannforbes.com/showrooms
or contact Customer Relations
at 888.582.8780



PO Box 1149 | Tualatin, OR 97062 | hartmannforbes.com | t 503.692.9313 | 888.582.8780 | f 503.692.9315

©Copyright 2022 Hartmann&Forbes® Inc. All rights reserved. All design information, samples, photographs, text, graphics, layout, weave and shade names and other materials included in this book are protected as the proprietary intellectual property of Hartmann&Forbes, Inc. Reproduction, adaptation or duplication, in whole or in part, is prohibited except by express written permission of Hartmann&Forbes, Inc.

BOSTON
NEW YORK
WASHINGTON DC
HOLLYWOOD, FL
ATLANTA
DETROIT
CLEVELAND
CHICAGO
ARLINGTON HEIGHTS
MINNEAPOLIS
DENVER
ST. LOUIS
KANSAS CITY
DALLAS
HOUSTON
SCOTTSDALE
SEATTLE
SAN FRANCISCO
LOS ANGELES
LAGUNA NIGUEL
CALGARY, AB
VANCOUVER, BC
TORONTO, ON

HARTMANNFORBES.COM