

# HARTMANN & FORBES®

## FEATURED IN

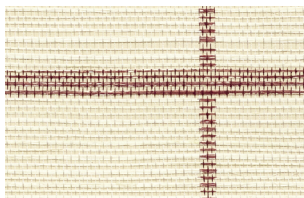


Publication: Milieu

Date: Summer 2021

Article: Pendants: Meet the makers of these new collections for your home | p46

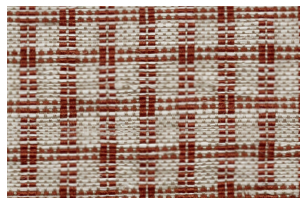
Product Shown:



WLJP24-72  
Christopher Check - Brick



LEJP21-72  
Christopher Check - Brick



LEJP20-72  
Apsley Check - Brick

Order no-charge memos online at [hartmannforbes.com](http://hartmannforbes.com)  
or contact your local representative showroom.



## CHECKMATES

Interior designer J. Randall Powers likes structure, especially when it comes to textiles and furnishings, but he isn't willing to stay within its boundaries. When the Oregon-based Hartmann&Forbes invited the Houston designer to fashion a line of window and wall coverings, Powers responded by creating four distinct patterns that speak of his penchant for structure that's playful—the Christopher Check, a medium check of contrasting colors (above right and below); the Apsley Check (below far right), defined by small, even squares; the JG Plaid, noted for crisscrossing pencil stripes in an irregular sequence; and the Baldwin Stripe with its relaxed rectangular pattern. "When approaching the concept for Hartmann&Forbes, I looked for what I loved, and what I saw was missing in my search for the perfect shade design or wallcovering," says Powers. "Something tailored and refined but of a scale that was intimate or playful." Powers was the perfect designer for the line since he, too, understands Hartmann&Forbes' mission to embrace handweaving using natural materials. As the company's founder, Michael Jones, continues to state, "I don't want to change the world; I merely want to preserve it by advancing the art of handweaving so the next generations can enjoy its beauty." —David Masello

