

FEATURED IN



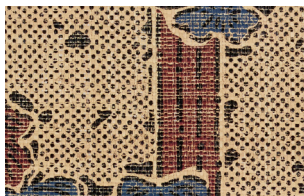
Publication: Architectural Digest

Date: February 2019

Article: Dress to Impress | p28

Order no-charge memos online at hartmannforbes.com or contact your local representative showroom.

NATURAL WALLCOVERING



WLMS74-57 Japón Garden - Red Blue

NATURAL WALLCOVERING



WLMS75-72 Kamakura - Ruby



1. CUSTOM-MADE WINDOW AND WALL TREATMENTS IN A MANHATTAN APARTMENT BY MICHAEL S. SMITH, WHO HAS TRANSLATED HIS SIGNATURE LOOK INTO A COLLECTION FOR HARTMANN & FORBES. 2. JAPÓN GARDEN WALL COVERING IN RED/BLUE. 3. KAMAKURA WALL COVERING IN RUBY.

DEBUT

Dress to Impress

Interior designer Michael S. Smith has put his sophisticated stamp on myriad enticing products for the home, from outdoor furniture for Brown Jordan to tiles for Ann Sacks and bath fittings for Kallista. (See his decor for Shonda Rimes on page 62.) Now the AD100 star has brought his vaunted taste to window dressings with the Michael S. Smith Collection for Hartmann & Forbes. Fashioned of hand-knotted sustainable ramie, palm, and bamboo fibers, the designer's artful patterns are poetically woven, stitched, or stained—craftsmanship that brings Smith's haute couture sensibility to a window near you in the form of matchstick blinds, roman shades, and top treatments. Yardage is available, too, as are four wall coverings, all offered in multiple colorways, that reinterpret bespoke surfaces of projects past. hartmannforbes.com —MITCHELL OWENS



JEWELRY

HAPPILY EVER AFTER

Inspired by the Brothers Grimm classic “The Twelve Dancing Princesses,” the new Perles d’Invisibilité necklace by Van Cleef & Arpels can be taken apart and worn as two bracelets and a choker. How’s that for a fairy-tale ending? vancleefarpels.com —J.K.D.V.



THE ART DECO-INSPIRED PIECE MIXES SAPPHIRES, RUBIES, ONYX, PEARLS, AND DIAMONDS (PRICE UPON REQUEST).