

FEATURED IN



Publication: Veranda

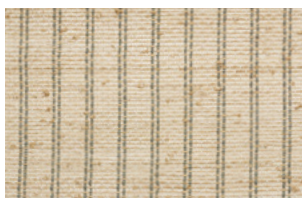
Date: June 2019

Article: Sublime Scenery | p42

Product Shown:



WLMS75-54
Kamakura – Malachite



LEMS71-54
City Stitch – Malachite

Order no-charge memos online at hartmannforbes.com or contact your local representative showroom.

The V List

MODERN MUSE

Sublime Scenery

Today's top tastemakers are bringing the spirit of their surroundings to new product debuts.

Hudson Valley Nature Study
Christopher Spitzmiller looked to the flora of his own New York farm to inspire his latest lamp, featuring sweet peas from his garden.

Large Hann lamp, \$3,065; christopherspitzmiller.com (shown with Sister Parish Apple fabric shade; sisterparishdesign.com).

East Asia's Power Patterns
Named for the seaside city of Kamakura just south of Tokyo, Michael S. Smith's new grass cloth wallcovering blends modern geometrics with Japanese stencil imagery for textured walls that read like art.

Michael S. Smith for Hartmann&Forbes **Kamakura wallcovering**, to the trade; hartmannforbes.com.

Chalk Paint by Annie Sloan with Charleston, from \$35 per liter; anniesloan.com.

Bright Shades of Old England
For her new paint collection, Annie Sloan channeled the Sussex getaway of Bloomsbury artists Vanessa Bell and Duncan Grant. The late-1500s farmhouse, Charleston, was frequented by Virginia Woolf and Roger Fry.

Robberg dinnerware, from \$23 each; malyskokedesign.com.

South Africa's Seaside Color
Designer Mally Skok's dinnerware collection is a colorful salute to her coastal upbringing on the western Cape and the wild beauty of the Robberg Nature Preserve.

Palma armchair (with cushions), \$1,805; janusetcie.com.

ALFRESCO GOES RETRO
with Janus et Cie's new Palma collection.

OUTDOOR INSIDER

COMING IN HOT

A bevy of bright pieces are lighting up porches and patios this season, landing their rightful spots in the sun.

1. **Glaze umbrella**, to the trade; santabarbaradesigns.com.
2. **Lace Overlay pillow**, \$199; frontgate.com.
3. **Melamine dinner plates**, \$75 for a set of four; thomasfuchscreative.com.
4. **Ocean Drive tray**, \$435; oomphhome.com.
5. **The Bianca lantern**, \$2,800; coleandcompany.com.

42 VERANDA

PRODUCED BY Rachael Burrow AND Dayle Wood

LAMP: BRIAN WOODCOCK; GARDEN: RICHARD POWERS; KAMAKURA AND ROBBERG NATURE RESERVE: ALAMY STOCK PHOTO; CHARLESTON STUDIO: FENELIPE FEWSTER